

## 88-505 Attachment of model designation on trunk lid

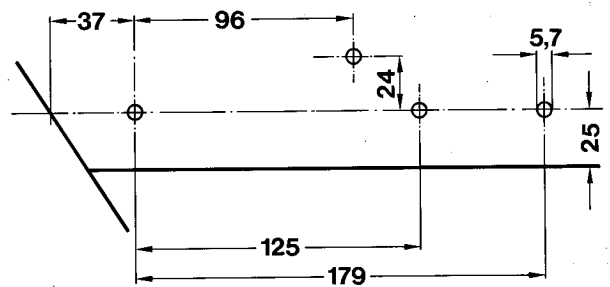
### Note

Clip version: When renewing trunk lid, drill the 4 holes (on model 200 three) prior to painting.

Glued version: When using the glued version, these parts will be available as spare parts only.

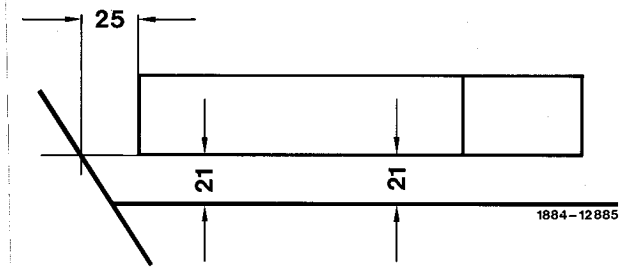
### Clip version

- 1 Mark bores according to drawing, center-punch and drill, dia.  $5.7 + 0.1$  mm.
- 2 Remove drilling swarf and treat hole edges with zinc dust paint.



### Glued version

- 3 Heat model identification and glueing surfaces to approx.  $40\text{ }^{\circ}\text{C}$  (heat radiator, hot air blower or the like).
- 4 Position model identification according to drawing and press on.



**Note:** If a model identification is glued on a trunk lid with holes, check these holes for leaks and seal from inside with an MB sealing cord or MB body sealing compound, if applicable.