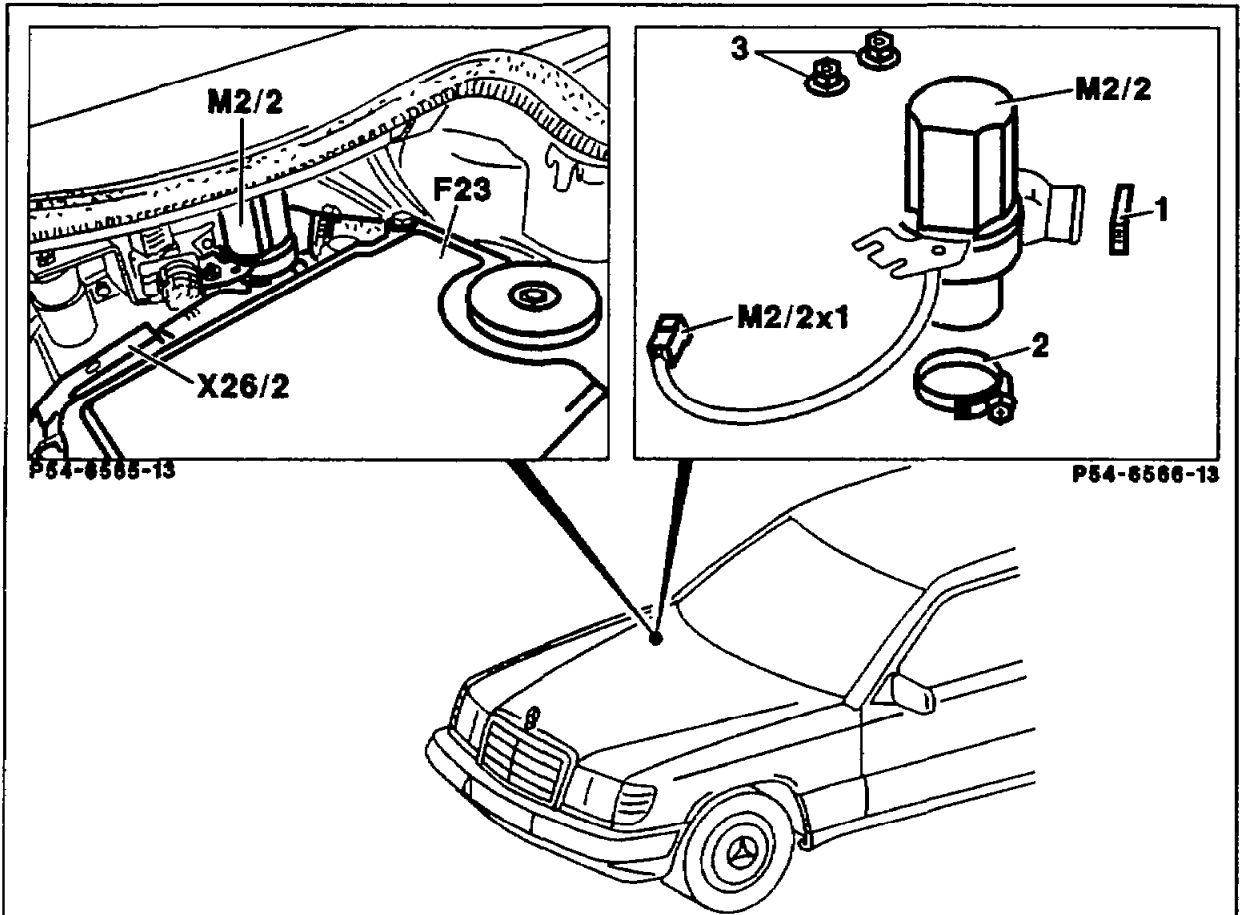


# 54-2350 Removing and Installing blower motor for module box (model 124.034/ .036)

Operation no. of operation texts and work units or standard texts and flat rates:

## A. Removal, Installation

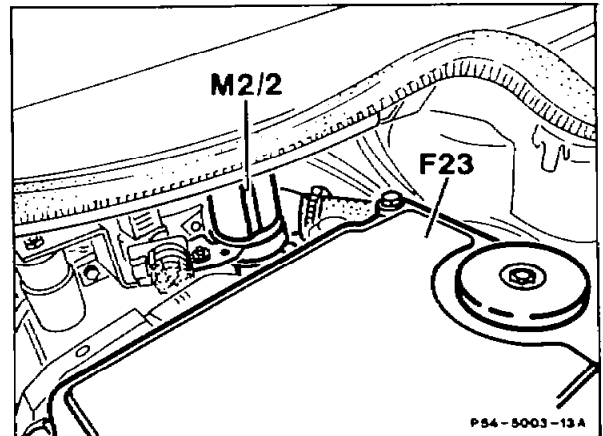


Battery ground cable .....	disconnect, reconnect.
Component compartment cover behind module box (F23) .....	remove, reinstall.
Plug connection, engine separation point (X26/2) .....	disconnect, reconnect.
Duo valve behind module box (F23) .....	unhook, if required, hook in.
Hose strap (1 and 2) .....	loosen, tighten.
Nuts (3) .....	screw off, screw on.
Plug connection, module box blower motor (M2/2x1) .....	disconnect, connect.
Module box blower motor (M2/2) .....	remove, install.

## B. Function

The module box blower motor (M2/2), for cooling the control units in the module box (F23), is switched on and off by the temperature sensor in the base module N16/1.

The cooling air required is drawn in from the interior in the area of the glovebox and flows back at that point.



F23	Module box
M2/2	Module box blower motor

The module box blower motor (M2/2) is switched on:

- 1 For 1.5 seconds each time the engine is started if engine speed exceeds 1200/min.
- 2 If the temperature in the module box exceeds 60 °C.

The module box blower motor (M2/2) is switched off:

- 1 At a temperature below 55 °C.

If a limit temperature (approx. 70 °C) is exceeded during driving although the module box blower motor (M2/2) is switched on, this is stored as fault 5 in the diagnosis of the base module N16/1.