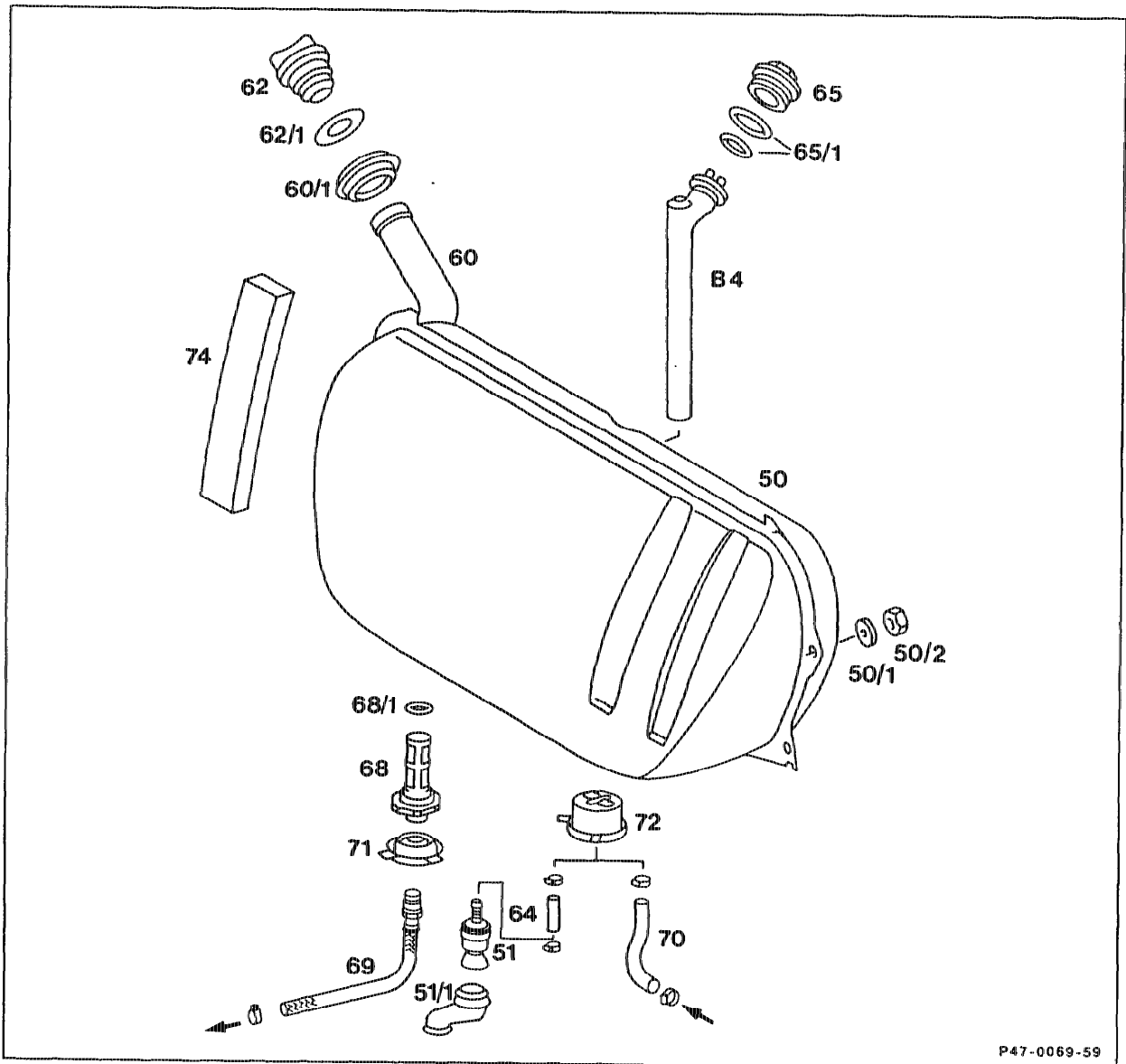


# 47-4100 Removing and Installing Fuel Tank

Preceding work:

Operation no. of operation texts and work units or standard texts and flat rates: 47-4100

## A. Model 124 Sedan



P47-0069-59

Safety regulations .....	observe, risk of accident!
Battery ground cable .....	disconnect, connect.
Cap (62) .....	remove, fit. Check seal (62/1), renew if necessary.

Fuel tank (50) . . . . .	drain. Carefully pump out fuel to ensure that there is no fuel remaining in the tank. Capacity approx. 70 litres. Stick 4 sound-deadening strips (74) with MB universal adhesive 000 989 92 71, if necessary.
Cup seal (60/1) . . . . .	remove, install.
Panelling of fuel tank and left and right side panelling of trunk . . . . .	remove, install.
Fuel gauge . . . . .	detach connector on sending unit (B4), fit on, check operation. Remove, install sending unit (B4) 39 Nm, if necessary (47–7000). Renew seal rings.
Supply hose (69), return hose (70), vent valve (51, 51/1) . . . . .	disconnect, connect, 28 Nm. Check for re-use. Collect remaining fuel. Seal connections. Ensure cup seals (71, 72) are correctly fitted.
Nuts (50/2, 4 off) . . . . .	unscrew, screw on, 21 Nm. Use 4 shims (50/1).
Fuel filter (68) . . . . .	if necessary, remove, install, clean, 39 Nm. Check for re-use. Renew seal (68/1).
Run engine briefly . . . . .	check joints for leaks.

## Notes

**Engines 602.962, 603.960/963,  
Code 885 (Immobilizer) only**

Check valve in fuel return hose so that fuel pump cannot draw in fuel from return flow when feed valve closed.

**Production breakpoint: as of April 1994**

Model	Engine	Engine end no. Manual transmission	Engine end no. Automatic transmission
124.128	602.962	031690	019807
124.133	603.960	-	051482
124.333	603.963	-	004366

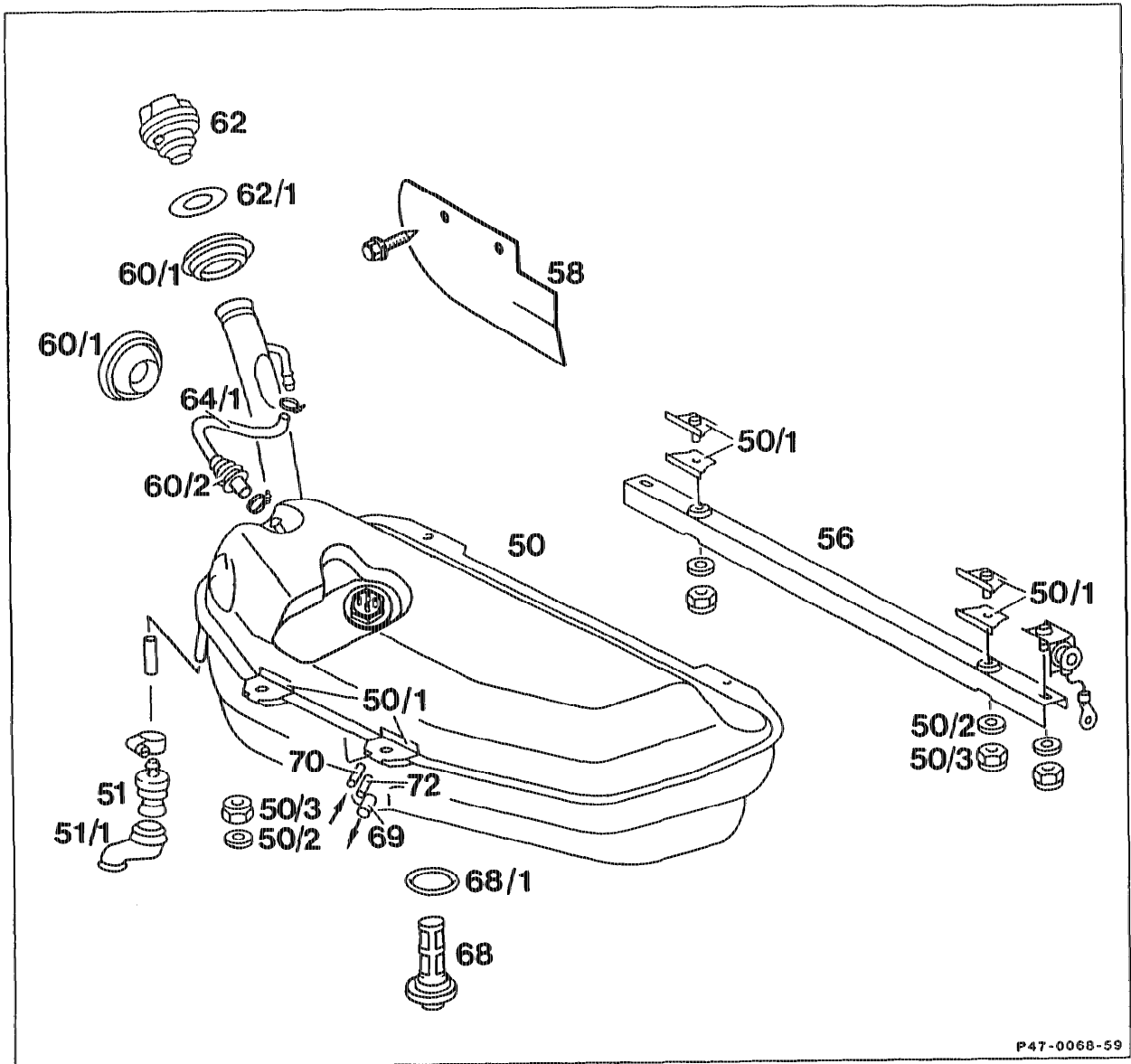
**Engine 603.960/963**

Discontinuation of check valve in fuel return hose because of poor starting properties.

**Production breakpoint: as of October 1994**

Model	Engine	Engine end no. Automatic transmission
124.133	603.960	052949
124.333	603.963	004501

## B. Model 124 Station Wagon



P47-0068-59

Safety regulations .....	observe, risk of accident!
Battery ground cable .....	disconnect, connect to battery.
Cap (62/1) .....	remove, fit. Check seal (62/1), renew if necessary.
Fuel tank (50) .....	<p>drain. Carefully pump out fuel to ensure that there is no fuel remaining in the tank.</p> <p>Capacity approx. 72 litres.</p> <p>Stick 4 sound-deadening strips between rear floor and fuel tank with MB universal adhesive 000 989 92 71, if necessary.</p>

Cup seal (60/1) .....	remove, install.
Front cargo area flap or 3rd bench seat backrest .....	remove, install.
Panelling of front stowage area .....	detach and fold back; fold forward and fix in place.
Vent line (64/1) .....	remove, install. When installing, preassemble on fuel tank. Lay line with constant slope and free of kinks. Ensure cup seal (60/2) is correctly fitted.
Fuel gauge .....	detach connector on sending unit (B4), fit on, check operation. Remove, install sending unit (B4) 39 Nm, if necessary (47–7000). Renew seal rings.
Supply hose (69), return hose (70), leak line (72) .....	disconnect, connect. Check for re-use. Collect remaining fuel. Seal connections.
Vent valve (51) .....	detach, attach.
Exhaust .....	detach, attach at two rear hangers (suspend with V-belt).
Splash guard (58) filler neck .....	detach, attach.
Bracket of level line (left-hand side) .....	detach, attach.
U-rail (56) .....	remove, install 30 Nm (support fuel tank). Nuts (50/3) self-locking.
Fixture (50/1–50/3) of fuel tank at front .....	unscrew, screw on, 30 Nm. When removing fuel tank, ensure that the connection fitting for the vent line (64/1, on the filler neck) does not catch on a line. Press exhaust and level line to the left.
Fuel filter (68) .....	if necessary, remove, install, clean, 39 Nm. Check for re-use. Renew seal (68/1).
Run engine briefly .....	check joints for leaks.

## Notes

Engines 602.962, 603.960/963,

Code 885 (immobilizer) only

Check valve in fuel return hose so that injection pump cannot draw in fuel from return flow when feed valve closed.

### Production breakpoint: as of April 1994

Model	Engine	Engine end no. Manual transmission	Engine end no. Automatic transmission
124.188	602.962	031690	019807
124.193	603.960	-	051482
124.393	603.963	-	004366

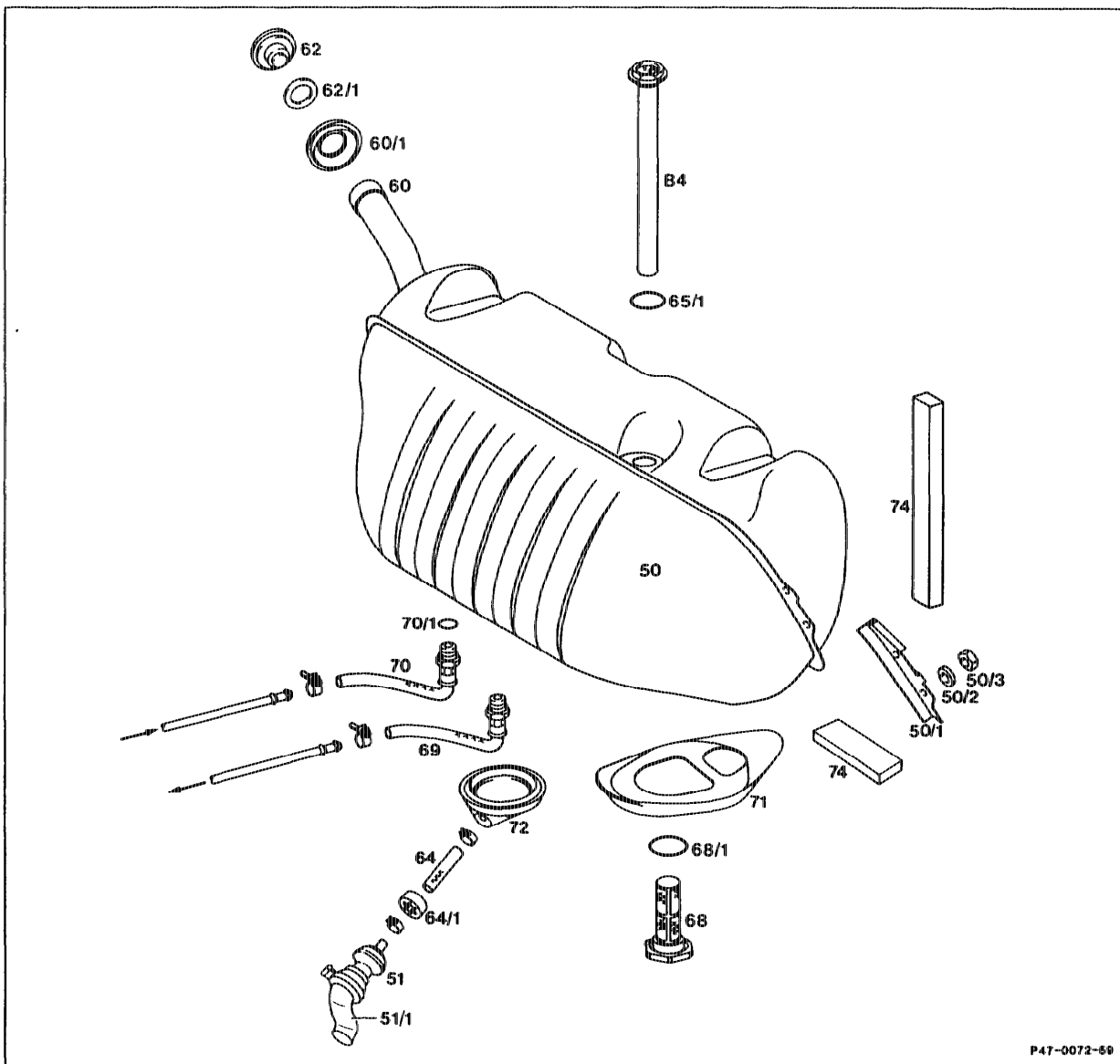
### Engine 603.960/963

Discontinuation of check valve in fuel return hose because of poor starting properties.

### Production breakpoint: as of October 1994

Model	Engine	Engine end no. Automatic transmission
124.193	603.960	052949
124.393	603.963	004501

C. Model 126



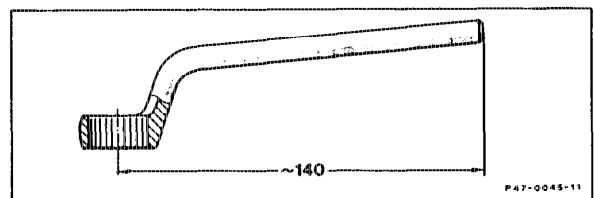
P47-0072-59

- |                            |   |
|----------------------------|---|
| Safety regulations .....   | observe, risk of accident!  |
| Battery ground cable ..... | disconnect, connect to battery.   |
| Caps (62) .....            | remove, fit. Check seal (62/1), renew if necessary.   |
| Fuel tank (50) .....       | drain. Carefully pump out fuel to ensure that there is no fuel remaining in the tank. Capacity approx. 90 litres. Stick 4 sound-deadening strips (74) with MB universal adhesive 000 989 92 71, if necessary. |

Cup seal (60/1) .....	remove, install.
Partition wall trunk/fuel tank .....	remove, install.
Supply line (69), return line (70), vent valve (51) .....	disconnect, connect, 28 Nm. Check for re-use. Use shortened box wrench (shop-made) for return line (70). Renew seal (70/1). Collect remaining fuel, seal connections. Ensure cup seals (71, 72) are correctly fitted.
Nut (50/3, 4 off) .....	unscrew, screw on, 21 Nm. Use 4 shims (50/2).
Fuel gauge .....	detach connector on sending unit (B4), fit on, check operation. Remove, install sending unit (B4) 39 Nm, if necessary (47-7000). Renew seal rings.
Fuel filter (68) .....	if necessary, remove, install, clean, 39 Nm. Check for re-use. Renew seal (68/1).
Run engine briefly .....	check joints for leaks.

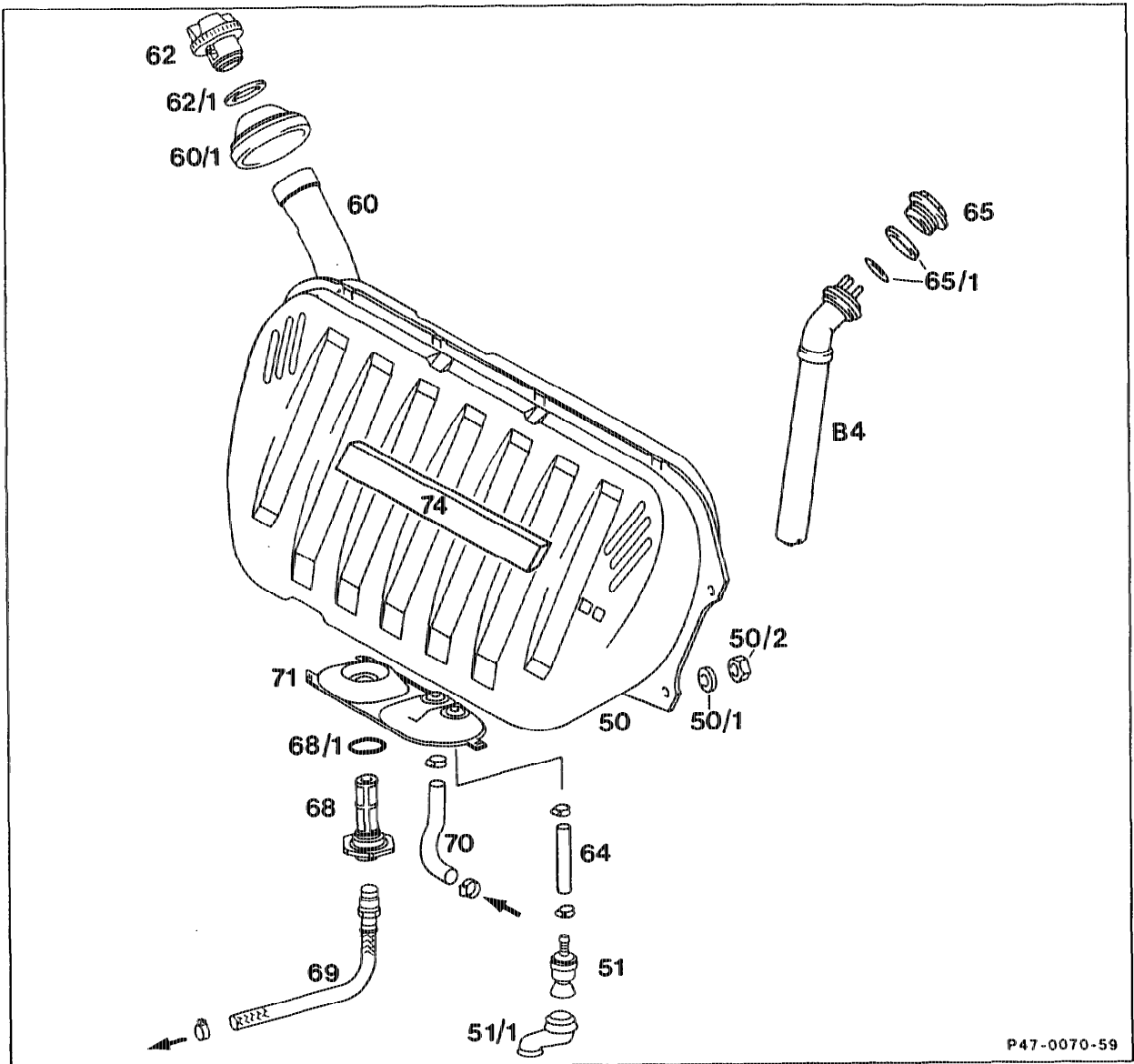
**Shop-made Tool**

Shorten commercial, offset box wrench as shown in sketch.





D. Model 201



P47-0070-59




Safety regulations .....	observe, risk of accident!
Battery ground cable .....	disconnect, connect.
Cap (62) .....	remove, install. Check seal (62/1), renew if necessary.
Fuel tank (50) .....	drain. Carefully pump out fuel to ensure that there is no fuel remaining in the tank. Capacity approx. 55 litres. Stick 4 sound-deadening strips (74) with MB universal adhesive 000 989 92 71, if necessary.

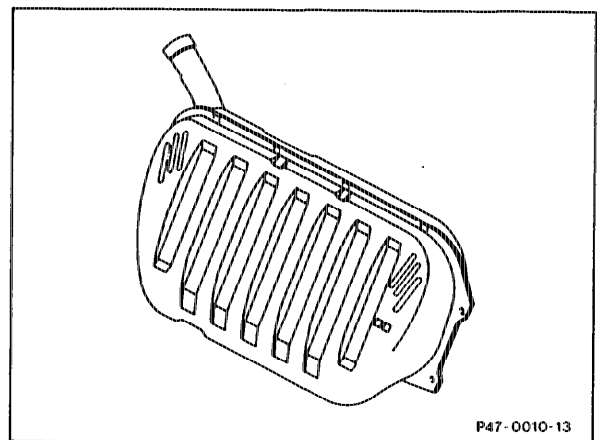
Cup seal (60/1) .....	remove, install.
Panelling of fuel tank .....	detach, attach.
Fuel gauge .....	detach connector on sending unit (B4), fit on, check operation. Remove, install sending unit (B4) 39 Nm, if necessary (47–7000). Renew seal rings.
Supply hose (69), return hose (70), vent valve (51) .....	disconnect, connect, 28 Nm. Check for re-use. Collect remaining fuel, seal connections. Ensure cup seal (71) is correctly fitted.
Nut (50/2, 4 off) .....	21 Nm. Use 4 shims (50/1).
Drain hose from tank recess .....	before removing the fuel tank, pull drain hose slightly upwards and lay over edge of fuel tank. Lay correctly following installation.
Fuel filter (68) .....	if necessary, remove, install, clean, 39 Nm. Check for re-use. Renew seal (68/1).
Run engine briefly .....	check joints for leaks.

**Notes**

**Modifications effective 09/88**

The contours of the fuel tanks have been adapted to the modified space conditions. Capacity approx. 55 and 70 litres resp., reserve approx. 6.5 and 8 litres, resp.

The 70-litre fuel tank of Model 201.035 (190 E 2.5–16) is available in place of the 55-litre fuel tank as optional equipment, except for , , .



up to 08/88

### Repair instruction

Fuel tanks as of 09/88 cannot be installed in cars manufactured prior to this date.

effective 09/88

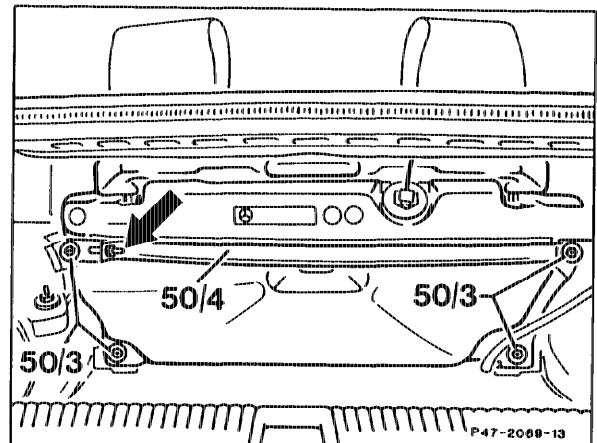
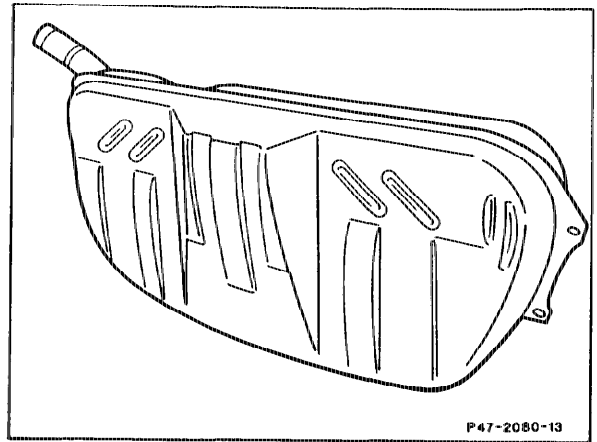
The 55-litre fuel tank is manufactured either from sheet steel or plastic. Only the sheet-steel fuel tank is supplied to the countries (AUS), (J), (USA).

### Note

Only the plastic fuel tank with tensioning strap is supplied as a replacement, with the exception of the countries (AUS), (J), (USA).

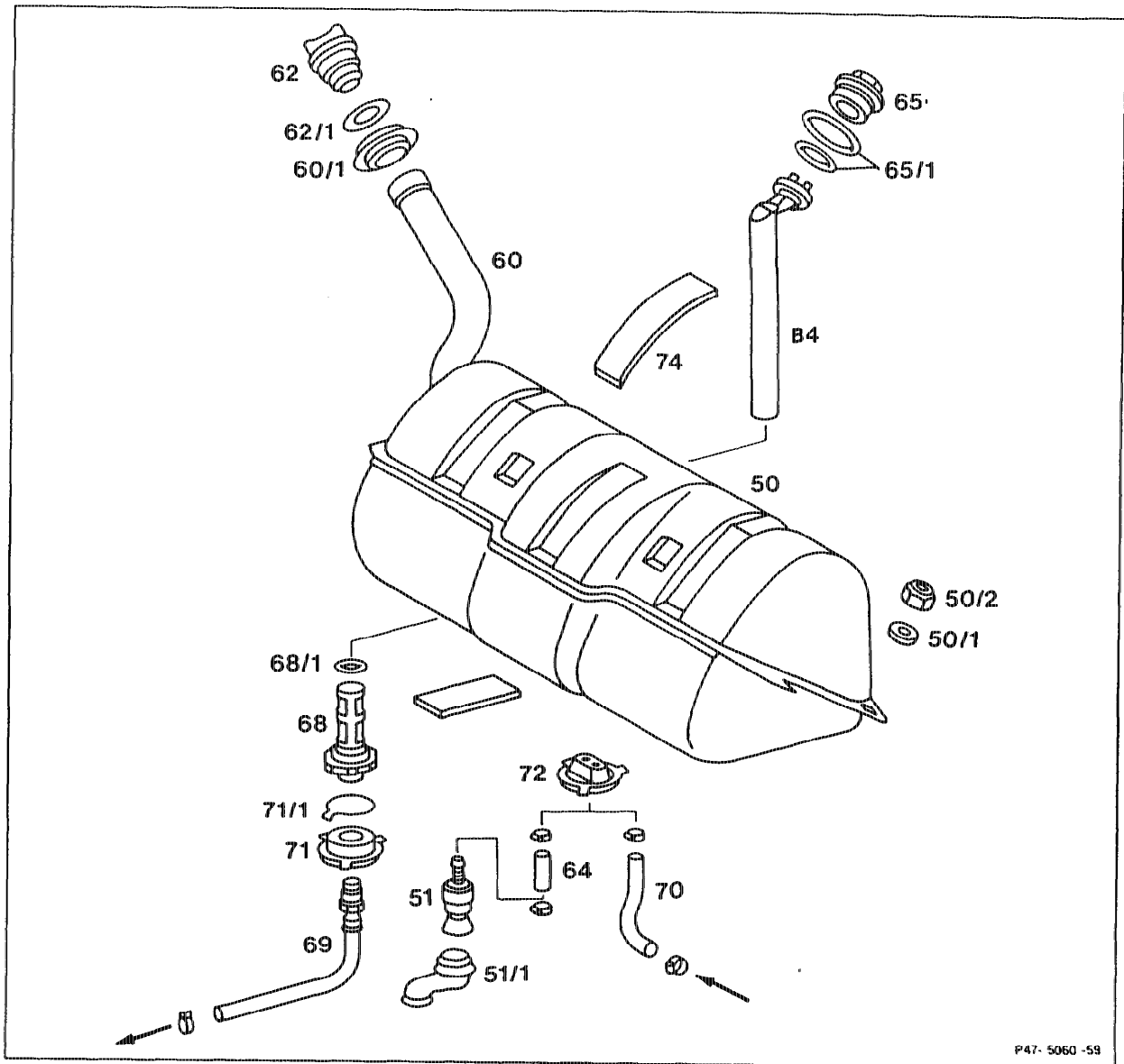
### Repair instruction

The plastic fuel tank has different cup seals on the rear floor and filler neck to the sheet-steel tank. When installing the tensioning strap (50/4), first of all tighten the nuts (50/3) until they make slight contact. Following this, tighten the tensioning bolt (arrow) to 10 Nm. Finally, tighten the nuts (50/3) to 21 Nm.



55-litre plastic fuel tank

E. Model 140



Safety regulations .....	observe, risk of accident!
Battery ground cable .....	disconnect, connect to battery.
Cap (62) .....	remove, fit on. Check seal (62/1), renew if necessary.

Fuel tank (50) . . . . .	drain. Carefully pump out fuel to ensure that there is no fuel remaining in the tank. Capacity approx. 70 liters. Stick 4 sound-deadening strips (74) with MB universal adhesive 000 989 92 71, if necessary.
Cup seal (60/1) . . . . .	remove, install.
Fuel tank trim, trunk left and right side trim . . . . .	remove, install.
Fuel gauge coupling . . . . .	unplug at sending unit (B4), plug in. Check operation of fuel gauge. Remove sending unit (B4), if necessary, 39 Nm, install (47-7000). Replace seals.
Supply line (69), return line (70), vent valve (51, 51/1) . . . . .	disconnect, connect, 28 Nm. Check for re-use. Collect fuel. Seal connections. Ensure cup seals (71, 72) are correctly fitted.
Nuts (50/2, 4 ea.) . . . . .	unscrew, screw on, 21 Nm. Use 4 shims (50/1).
Fuel filter (68) . . . . .	if necessary, remove, install, clean, 39 Nm, check for re-use, replace seal (68/1).
Run engine briefly . . . . .	check joints for leaks.