

ENGINE 601 in MODEL 124, 201

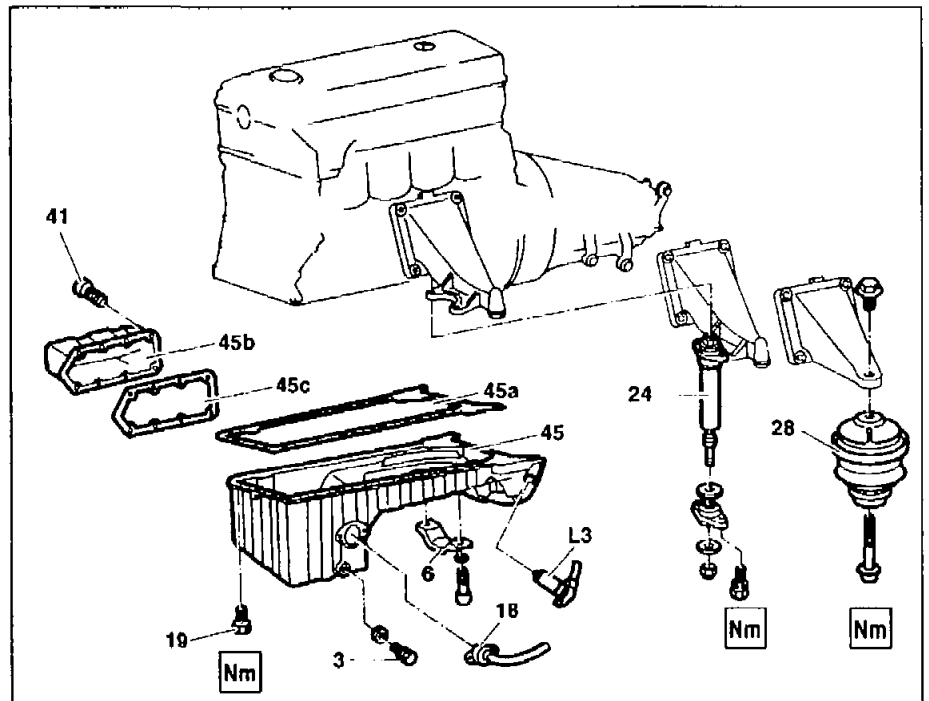
ENGINE 602 in MODEL 124, 201

ENGINE 603 (except 603.913) in MODEL 124

ENGINE 603 (except 603.963) in MODEL 124

ENGINE 603 in MODEL 126

- 3 Oil drain plug
 6 Engine stop bracket
 18 Oil level sensor
 19 Hexagon bolt
 24 Engine shock absorber
 28 Engine mount
 41 Bolt
 45 Oil pan
 45a Oil pan gasket
 45b Oil pan side part
 45c Oil pan side part gasket
 L3 Starter ring gear speed sensor



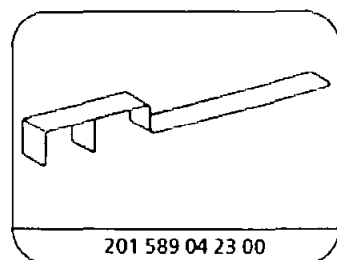
P01.45-0293-06

	Removing, installing		
1	Remove bottom engine compartment panel		
2.1	Remove torsion bar at front suspension	Model 124, 201	32-300
3.1	Suspend left drag link and right steering shock absorber	Model 124, model 201.126/128	64-6177
4	Disconnect ground cable at battery		AR54.10-P-0003A
5	Drain engine oil	Pay attention to tightening torque of oil drain plug (3). Pay attention to specified oil capacity.	AP18.00-P-0101AA
6.1	Take off engine stop bracket (6)	Model 201 (up to 03/85) Installation: Inspect engine stop, set. Gage	22-215 201 589 04 23 00
7.1	Detach left engine shock absorber (24)	Model 201 (up to 03/85)	22-240
8.1	Detach left and right engine shock absorbers (24)	Model 126	
9	Take off fan shroud, place over fan		
10	Unbolt speed sensor (L3) of starter ring gear and ground strap		
11	Unplug connector of oil level sensor (18)		
12	Disconnect oil line at connection piece to the oil hoses	Pinch off oil lines before disconnecting	

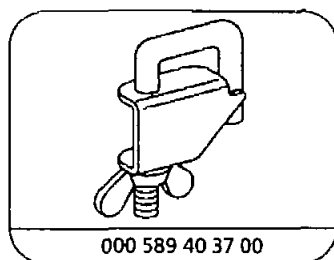
			000 589 40 37 00
13	Attach engine hoist to front lifting eye of engine		WH58.30-Z-1001-07A
14	Unscrew hexagon socket bolts at bottom of front left and right engine mounts (28)	Engine 601 in model 201 bis 03/1985, engine 603 in model 126 Models 201 as of 04/1985, 124, 140	AR22.10-P-1260HZ AR22.10-P-1260HX
15	Unbolt side part of oil pan (45b)	 Installation: Replace gasket (45c) on engines with oil pan side part.	BA01.45-P-1001-01A
16	Unscrew hexagon bolts (19) of oil pan (45)	 Pay attention to different lengths of hexagon bolts.	BA01.45-P-1001-01A
17	Take oil pan (45) and oil pan gasket (45a) off the crankcase	Take out oil pan in direction of travel; rotate crankshaft slightly for this step, if necessary. Clean off gasket residues on contact surfaces of oil pan. Installation: Replace oil pan gasket (45a). Align oil pan to rear contact surface of transmission. If the oil pan is not aligned to the transmission, this can result in noise and vibration problems.	
18	Install in the reverse order		
Danger!	Risk of accident as a result of vehicle starting off when engine running. Risk of injury as a result of bruises and burns if you insert your hands into engine when it is being started or when it is running.	Secure vehicle to prevent it starting off. Wear closed and close-fitting work clothes. Do not grasp hot or rotating parts.	AS00.00-Z-0005-01A AR01.45-P-7500HZ/3
19	Warm up engine and inspect for leaks		

Oil pan

Number	Designation	Engine 601, 602 except 602.98, 603 except 603.913/963		
BA01.45-P-1001-01A	Bolt of oil pan to crankcase	M6	Nm	10
		M8	Nm	25
		M10	Nm	40



Gage




Clamp



Commercially available tools (see Workshop Equipment Manual)

Number	Designation	Make (e.g.)	Order number
WH58.30-Z-1001-07A	Engine hoist (self-locking)	Bäcker Herderstraße D-42853 Remscheid	3188

AS00.00-Z-0005-01A	Risk of accident as a result of vehicle starting off when engine is running. Risk of injury as a result of bruises and burns if you insert your hands into engine when it is being started or when it is running.	Secure vehicle to prevent it from moving off. Wear closed and close-fitting work clothes. Do not grasp hot or rotating parts.	 Danger!
--------------------	--	---	--

Possible dangers

Risk of accident

from vehicle starting off during starting operation (e.g. when testing compression pressure) as a result of gear engaged or when engine running and vehicles with automatic transmission as a result of selector lever position "P" or "N" not engaged (exception: some vehicles do not have a selector lever position "P").

Risk of injury

Severe injuries may be caused by freely rotating parts in the area of the running engine. The heat produced by the engine when it is operating can result in severe burns if contact is made with individual, unshielded parts.

Rules of conduct / Protective measures

- As a general rule, carry out work on the running engine only if this is absolutely essential.
- Before starting the engine, apply parking brake.
- On models with manual transmission, move gearshift lever into Neutral position.
- On models with automatic transmission, move selector lever into position "P" or "N" (exception: some vehicles do not have a selector lever position "P").
- On models which do not have selector lever position "P", secure selector lever to prevent it from being operated unintentionally.
- Wear closed and close-fitting work clothes.
- Take off any jewelry, such as chains, rings etc.
- If you have long hair, wear a suitable head cover.
- Before commencing work on the running engine, check to obtain a general picture of the positioning of parts which may be hot.
- When carrying out work when starting the engine or when engine is running, do not touch any hot and rotating parts.

First aid measures in the event of burns

- Do not rub the skin areas affected; flush with plenty of cold water and cover skin with sterile bandages.
- Immediately consult a physician.

