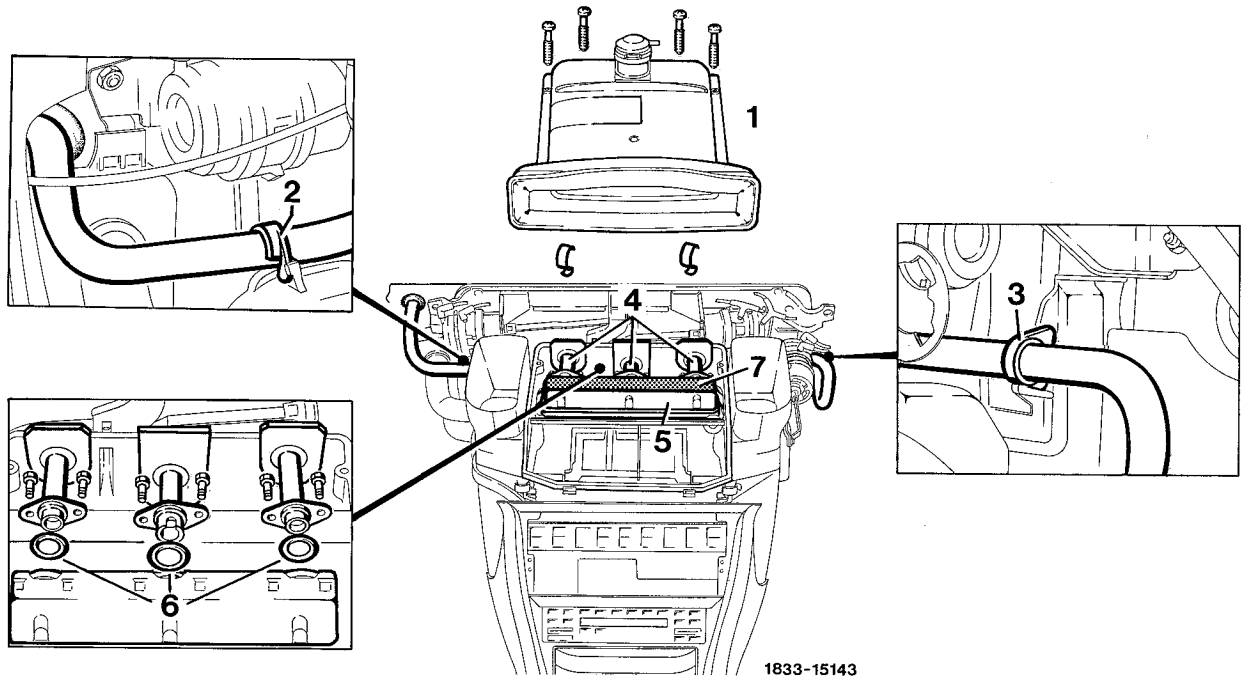


A. Up to approx. 05/90



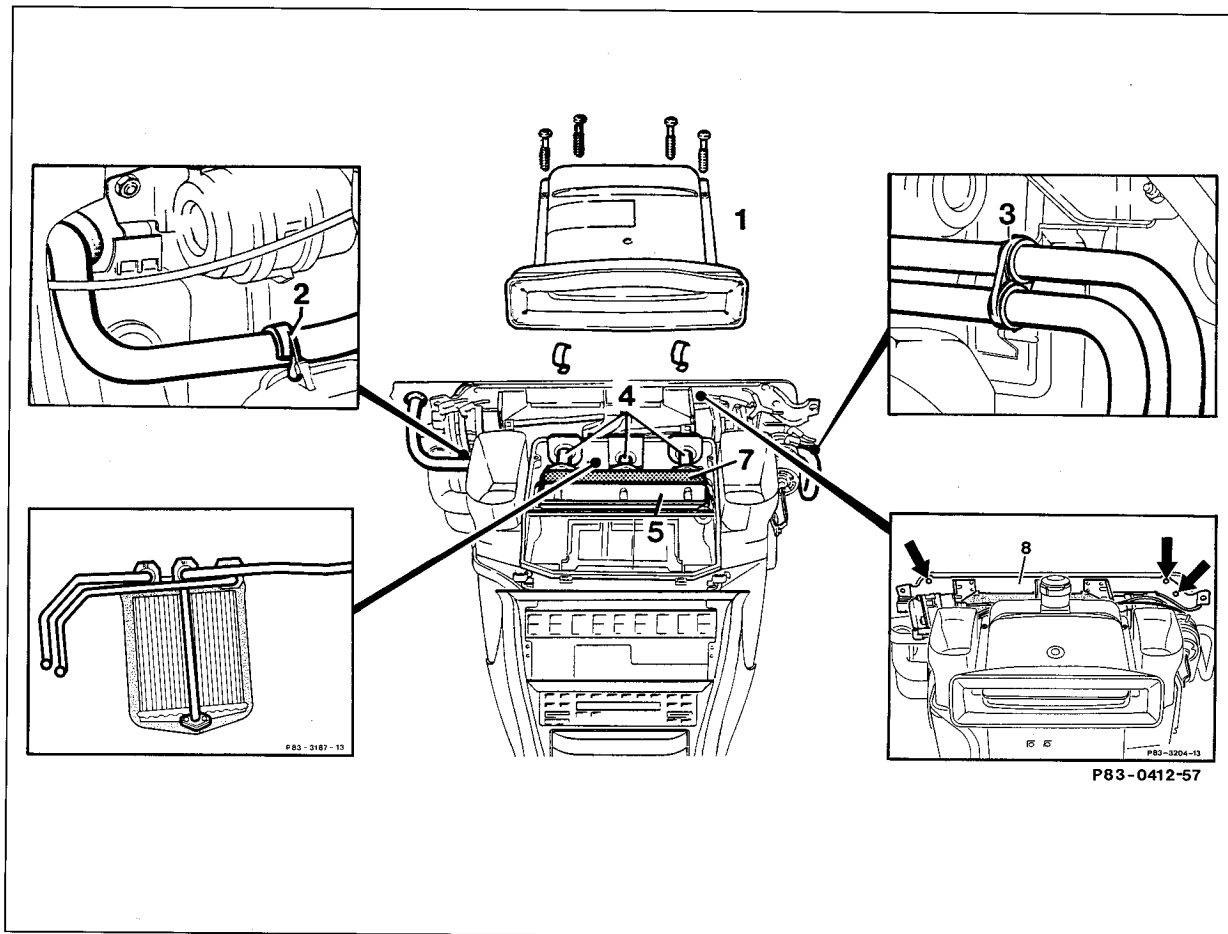
Battery	Disconnect
Coolant	Drain (20-010)
Supply and return hose	Disconnect and blow out residual coolant from the heat exchanger by means of compressed air
Instrument panel	Remove (68-100)
Cover (1)	Remove, 4 screws and 2 clips
Clamp (2)	Unclip
Clamp (3)	Unclip
3 pipes (4) on the heat exchanger	Disconnect and pull out of the heat exchanger
Heat exchanger (5)	Pull out upwards
Foam rubber strip (7) on the new heat exchanger	Glue on
In reverse order	Install
Sealing rings (6)	Renew 3

Installation instruction

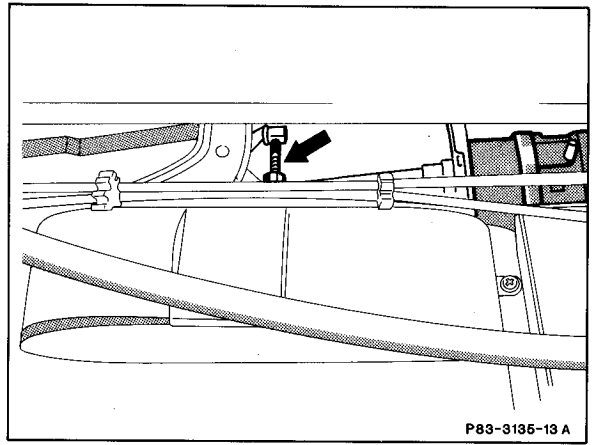
After filling in the coolant, check cooling system for leaks.

B. As of 06/90

as of vehicle ident. no. Sindelfingen-prod.: 249 838
 as of vehicle ident. no. Bremen-prod.: 146 108



Battery	Disconnect negative pole
Coolant	Drain (20-010)
Supply and return hose	Seal off, blow out remaining coolant with compressed air.
Heater box (air conditioner)	Remove (83-100)
Carrier for vacuum elements (8)	Unscrew (3 screws). Unclip operating linkage for main air flap (arrow).



Cover (1)	Remove, 4 bolts and 2 clips.
Clip (2)	Unclip.
Clip (3)	Unclip.
Heat exchanger (5)	Withdraw upwards together with pipes (4). Clean the housing from the inside or remove any coolant which has escaped.
3 pipes (4) on heat exchanger	Disconnect.
In reverse sequence	Install.
Sealing rings	Replace, 3 off.

Installation notes

After filling the cooling system with coolant,
check for leaks.