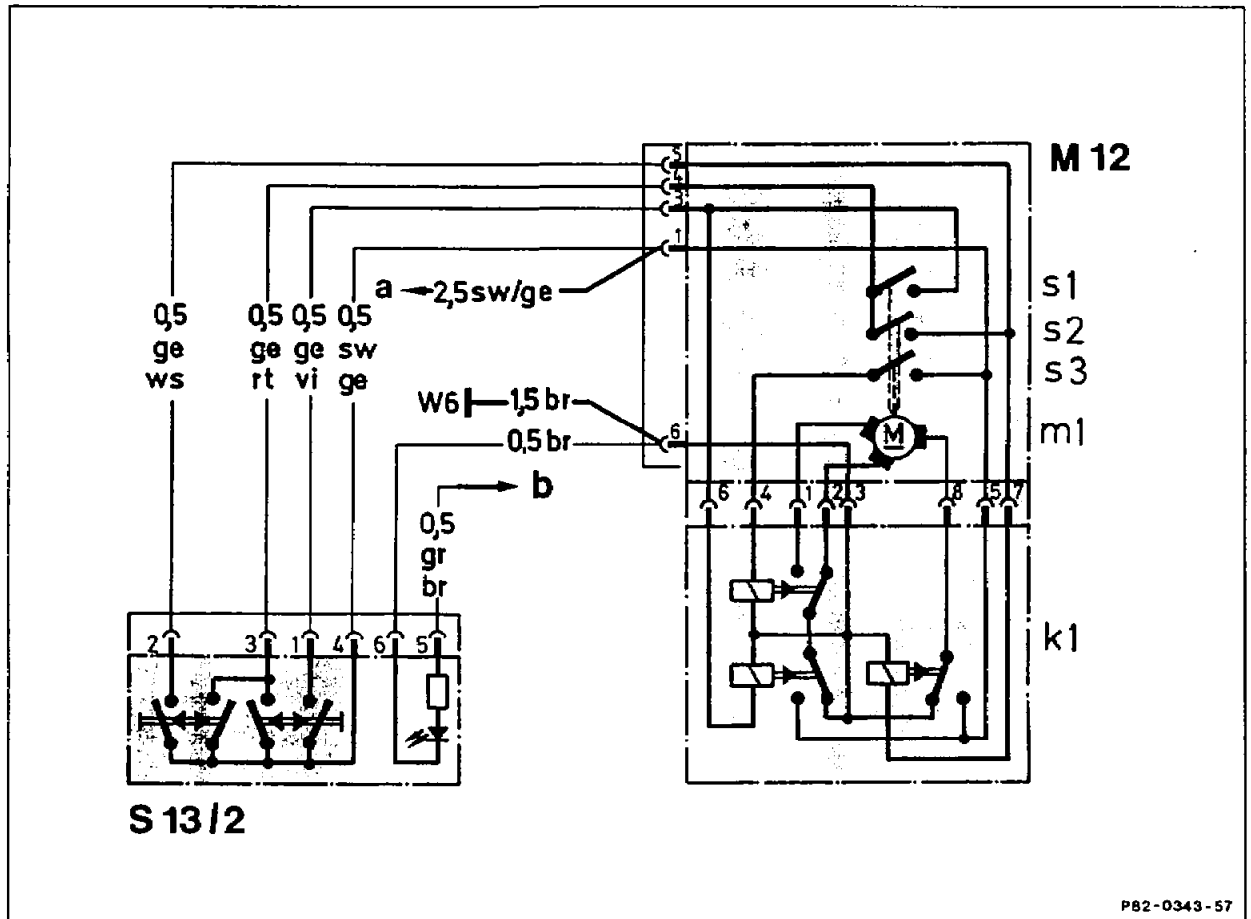


## 82-0392 Function of tilting/sliding roof, wiring diagrams

Operation no. of operation texts and work units or standard texts and flat rates:

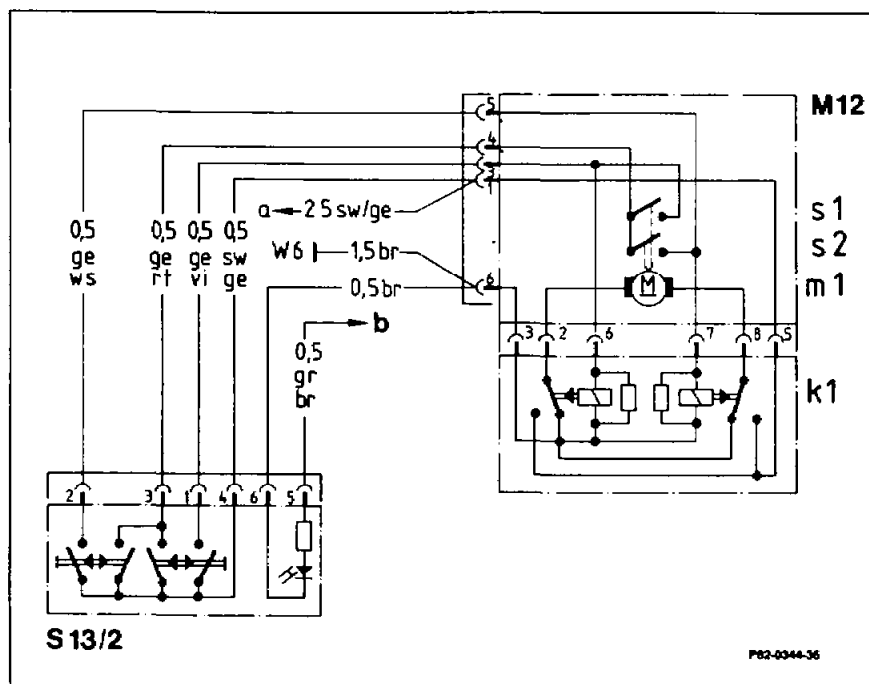
### A. 1st version (up to approx. 03/89)



P82-0343-57

|       |                                 |       |   |
|-------|---------------------------------|-------|---|
| M12   | Tilting/sliding roof            | S13/2 | Electric tilting/sliding roof switch                                      |
| M12k1 | Tilting/sliding roof relay      | W6    | Ground, trunk, left wheelhouse  |
| M12m1 | Tilting/sliding roof motor      | a     | To plug connection, optional equipment block X30 contact 5 (terminal 15R) |
| M12s1 | End cutout "down" microswitch   | b     | To plug connection, optional equipment block X30 contact 4 (terminal 58d) |
| M12s2 | End cutout "closed" microswitch |       |   |
| M12s3 | 2nd speed microswitch           |       |   |

## B. 2nd version (as of approx. 03/89)



|       |                                 |       |  |
|-------|---------------------------------|-------|--|
| M12   | Tilting/sliding roof            | S13/2 | Electric tilting/sliding roof switch                                   |
| M12k1 | Tilting/sliding roof relay      | W6    | Ground, trunk, left wheelhouse   |
| M12m1 | Tilting/sliding roof motor      | a     | Plug connection, optional equipment block X30 contact 5 (terminal 15R) |
| M12s1 | End cutout "down" microswitch   | b     | Plug connection, optional equipment block X30 contact 4 (terminal 58d) |
| M12s2 | End cutout "closed" microswitch |       |  |

### Modifications of 2nd version compared to 1st version

|   | 1st version             | 2nd version                 |
|---|-------------------------|-----------------------------|
| Motor                                       | 3 cables                | 2 cables                    |
| Relay                                       | 8-pin                   | 6-pin                       |
| Microswitch                                 | 3 switches (colourless) | 2 switches (red and yellow) |
| Speed stages                                | 2                       | 1                           |
| Interference suppression resistors in relay | –                       | 2                           |

The motors and relays of the 1st and 2nd versions can be interchanged. One speed stage remains. The part numbers remain unchanged.

## **General function**

### **End cutout**

|         |                         |
|---------|-------------------------|
| "Raise" | by means of slip clutch |
| "Lower" | with microswitch        |
| "Open"  | by means of slip clutch |
| "Close" | with microswitch        |

## **Notes**

If the slip clutch is too tightly set, the tilting/sliding roof is switched off by means of a thermal-time switch. The tilting/sliding roof is again operational after approx. 2 seconds.

The slip clutch must respond at a current consumption of maximum 18 A (specification 6–7 Nm).