



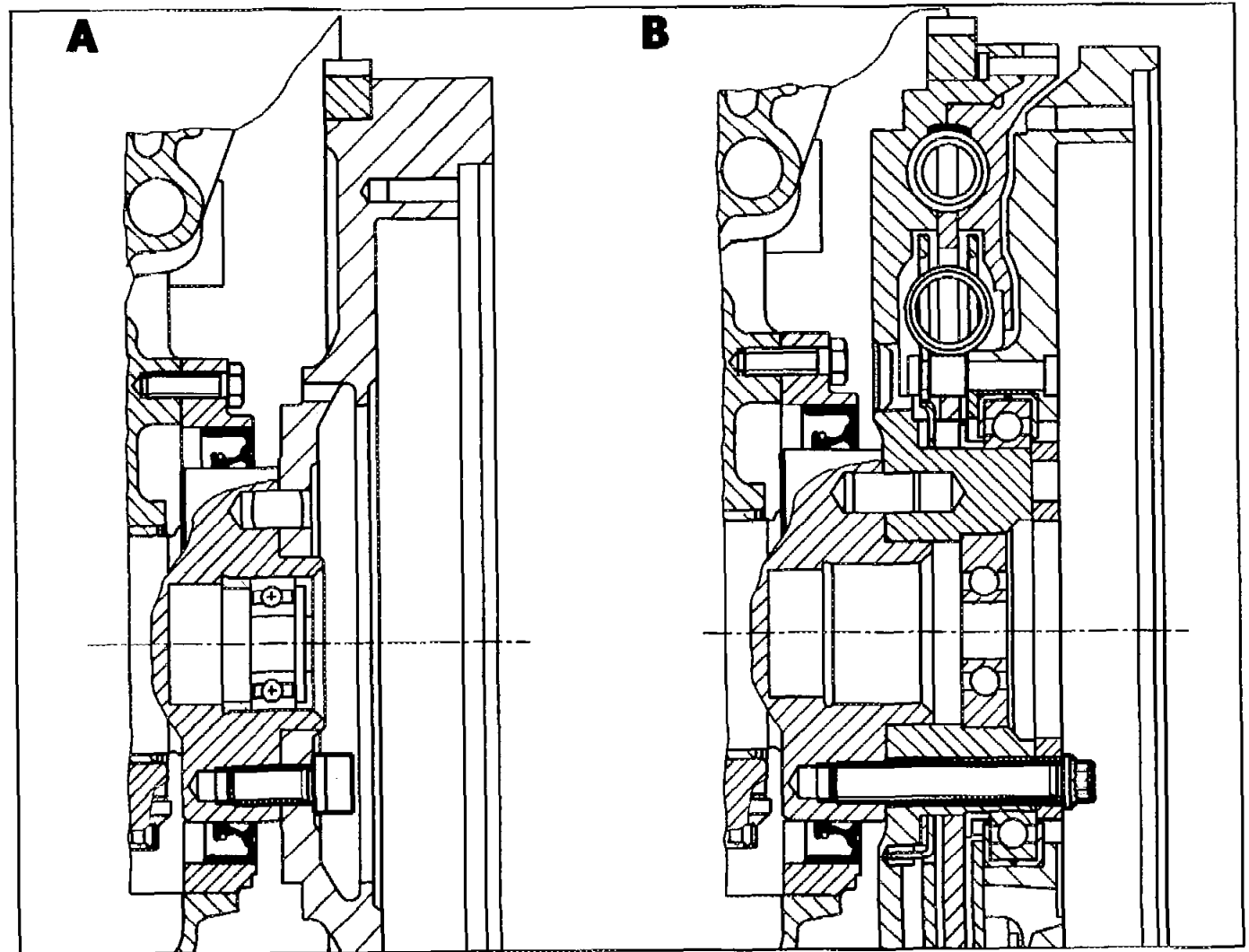
<b>E18</b>	GF00.00-X-1000Z	<b>Function descriptions, model/equipment combinations</b>	<b>21.6.99</b>
------------	-----------------	--	----------------

GF03.30-P-8001-01A	Flywheel, two-mass flywheel, driven plate arrangement		<b>F18</b>
--------------------	---	--	------------



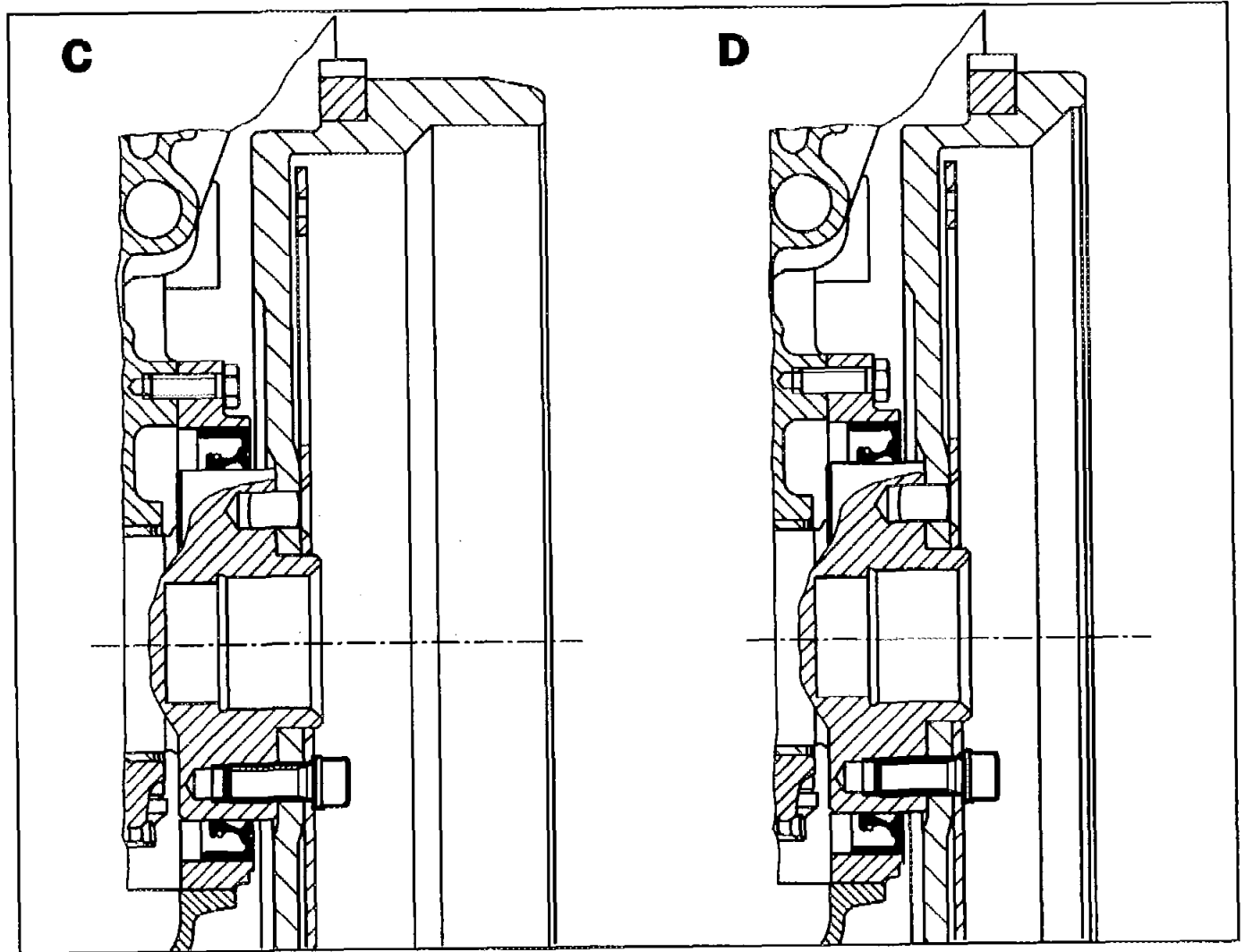
<b>F18</b>	GF03.30-P-8001-01A	Flywheel, two-mass flywheel, driven plate arrangement		
------------	--------------------	---	--	--

- A** Engine 604 with manual transmission  
**B** Engine 602.982/605/606 except  
606.961/962 with manual transmission



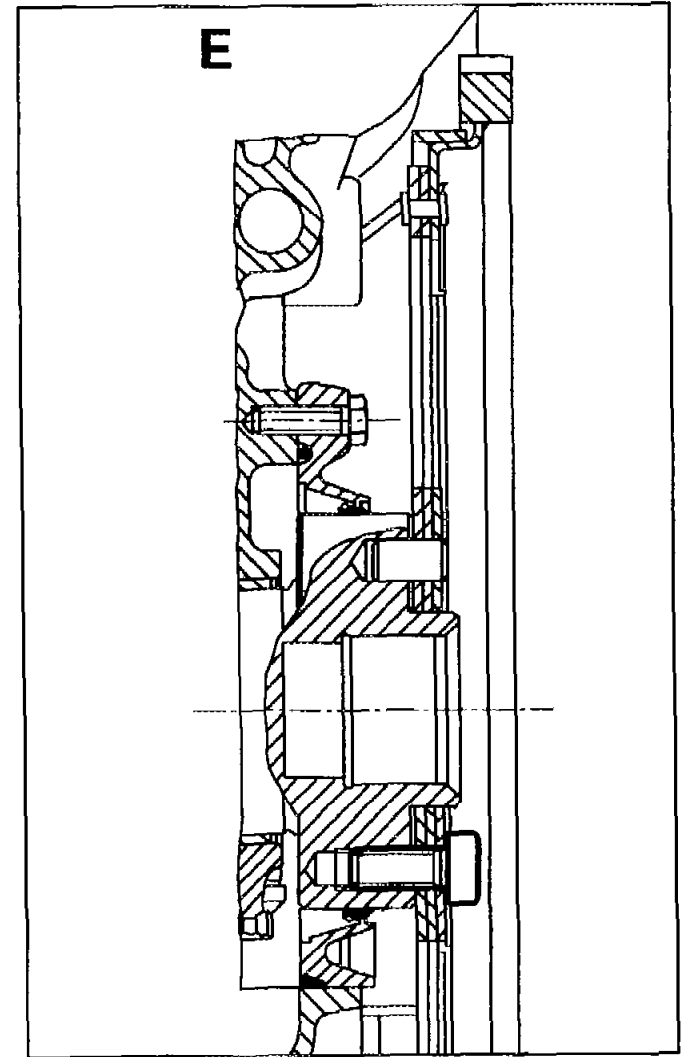


- C Engine 604 with automatic transmission
- D Engine 602.982/605/606 except 606.961/962 with automatic transmission





E Engine 606.961/962 with automatic transmission



P03.30-0289-03