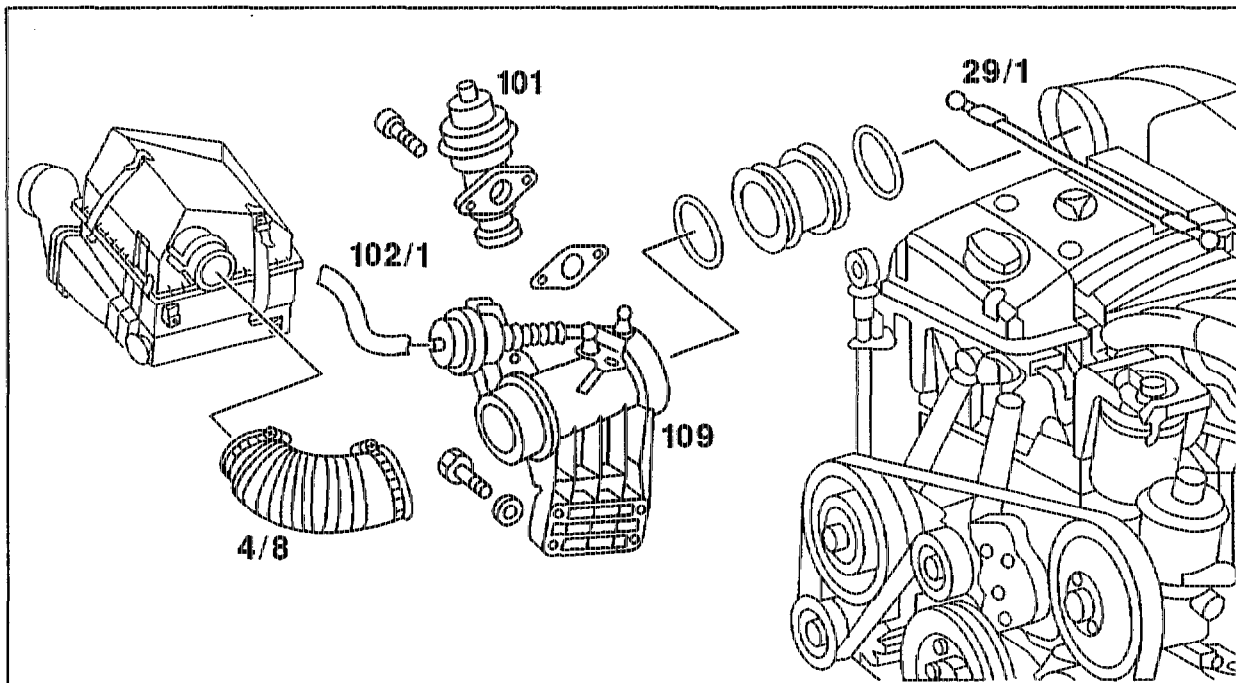


# 14-7265 Removing and installing vacuum control flap housing

Operation no. of operation texts and work units or standard texts and flat rates:  
14-7265



P14-5165-55

Shaped hose (4/8) .....	remove, install. To do this, slacken hose clips, tighten.
Vacuum hose (102/1) .....	detach, fit on.
Exhaust gas recirculation valve (101) .....	unbolt, bolt on, replace gasket.
Connecting rod (29/1) of vacuum control flap .....	detach, attach.
Bolts of vacuum control flap housing (109) at cylinder head .....	unscrew, screw in.
Vacuum control flap housing (109) .....	pull out of air cleaner cross pipe or variable resonance intake line, insert. Examine O-rings, replace if necessary.
 <b>Installation note</b>	
Slacken air cleaner cross pipe or variable resonance intake line at cylinder head, tighten. Insert O-rings with hot lubricating paste 000 989 76 51.	
Leaktightness of all connection points .....	check with engine running.

**Notes**

Welded nut at clamp of corrugated pipe to exhaust manifold and to EGR valve discontinued.

**Production breakpoint: as of May 1995**

Model	Engine	Engine end no. manual transmission	Engine end no. automatic transmission
124.104/107/126/129/ 186	605.911	035189	013722
124.131/191	606.910	009605	019587

Screw for EGR clamp standardized.

**Production breakpoint: as of July 1995**

Model	Engine	Engine end no. manual transmission	Engine end no. automatic transmission
124.104/107/126/129/ 186	605.911	037539	014844
124.131/191	606.910	010136	020648

Seal between EGR valve and pressure control flap housing standardized with engine 602.98.

**Production breakpoint: as of November 1995**

Model	Engine	Engine end no. manual transmission	Engine end no. automatic transmission
124.104/107/126/129/ 186	605.911	039838	015841
124.131/191	606.910	010338	021696