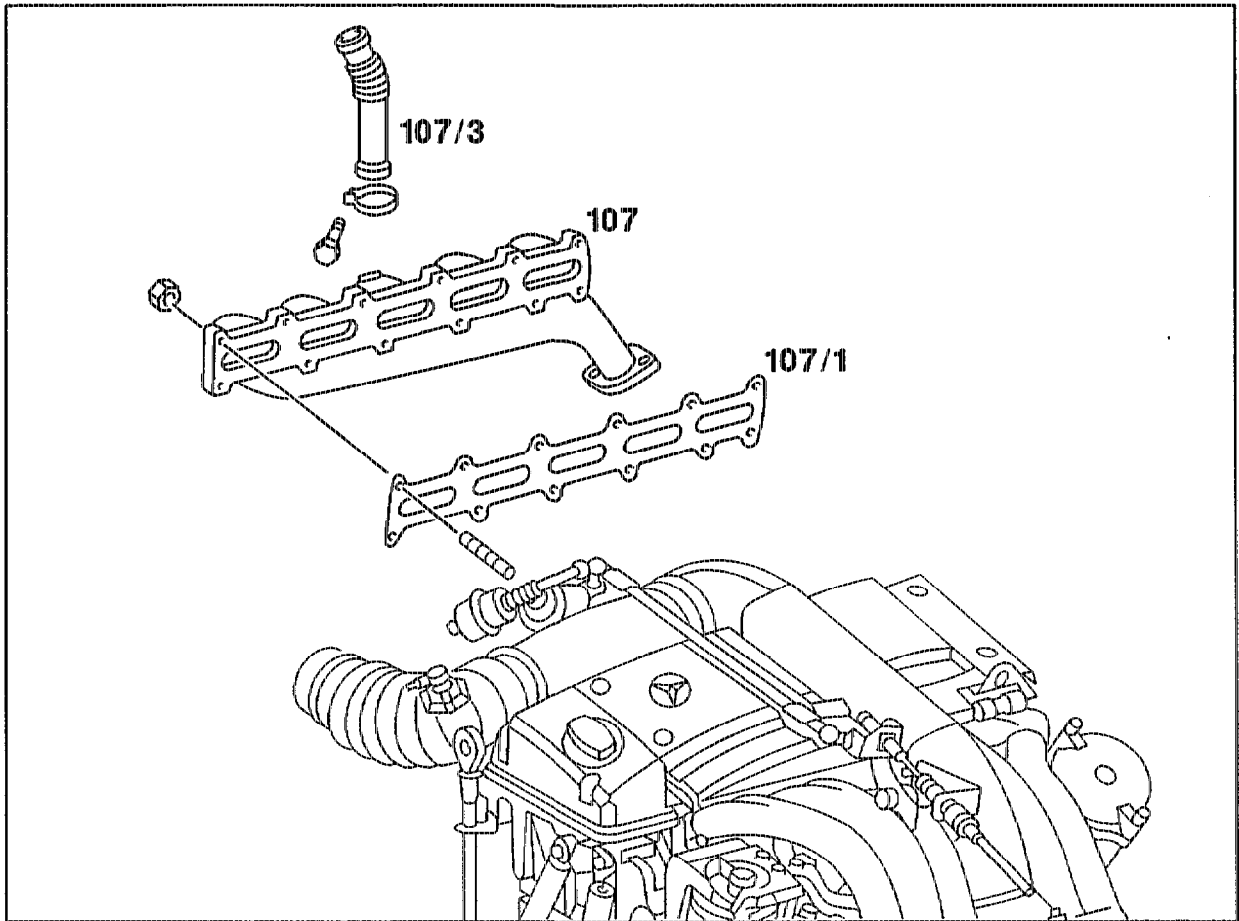


14-3915 Removing and installing exhaust manifold

Operation no. of operation texts and work units or standard texts
and flat rates:
14-3915

A. Engine 605.911

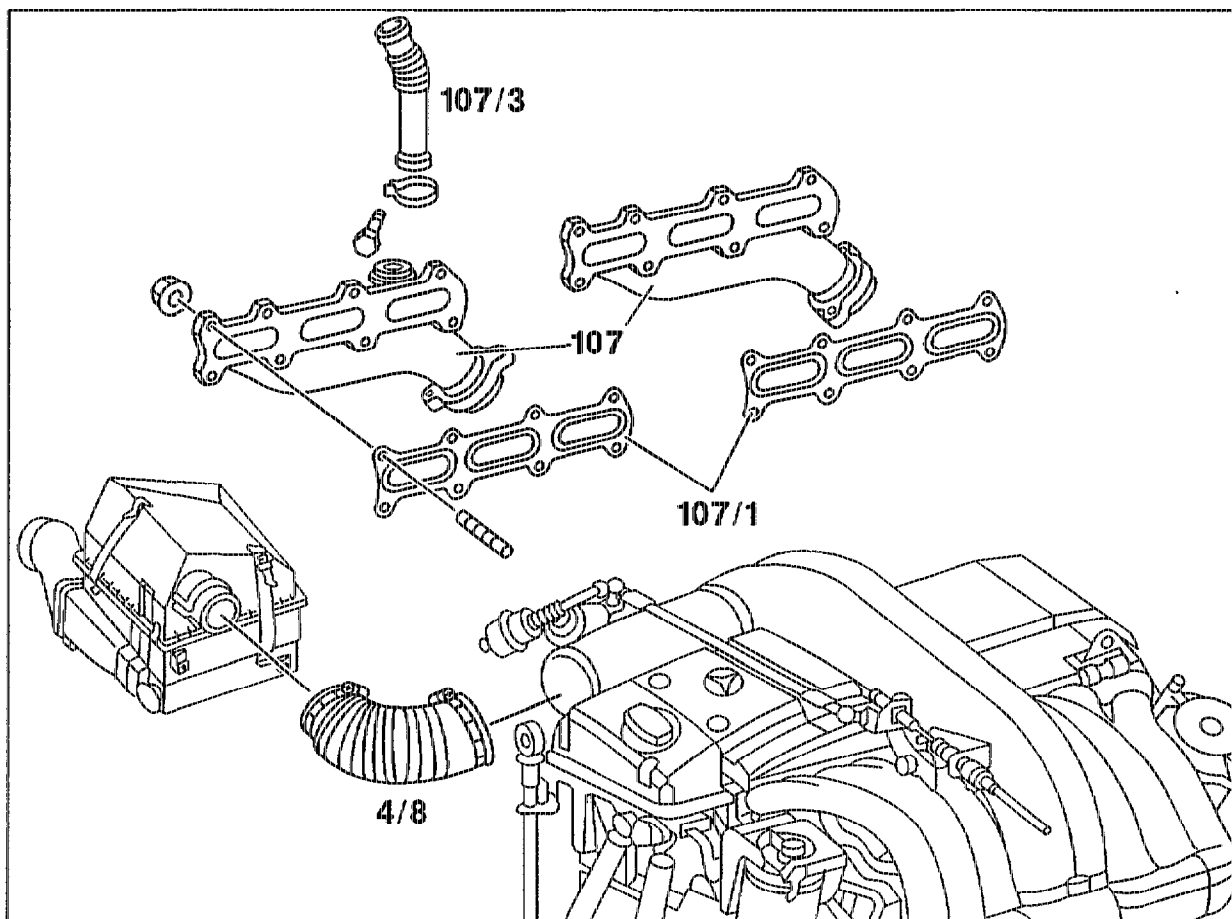


P14-5163-57

Flanged joints of exhaust manifold - oxidation catalytic converter or front exhaust system	separate, connect. To do this, unscrew bolts, screw in. Tightening torque 20 Nm as reference value.
Support for exhaust bracket at transmission	unbolt, bolt on. Tightening torque 20 Nm as reference value.
Corrugated pipe (107/3) at exhaust manifold	take off, fit on. To do this, slacken clip, tighten.
Nuts of exhaust manifold	screw down, screw up. Tightening torque 20 Nm as reference value.

Exhaust manifold (107)	take off, fit on.
Gasket (107/1)	replace.
Stud bolts in cylinder head	check, replace if necessary.
Leaktightness of all connection points	check with engine running.

B. Engine 606.910



P14-5164-57

Flanged joints of exhaust manifold – oxidation catalytic converter or front exhaust system	separate, connect. To do this, unscrew bolts, screw in. Tightening torque 20 Nm as reference value.
Support for exhaust bracket at transmission	unbolt, bolt on. Tightening torque 20 Nm as reference value.
Corrugated pipe (107/3) at exhaust manifold	take off, fit on. To do this, slacken clip, tighten.

Shaped hose (4/8)	remove, install. To do this, slacken hose clips, tighten.
Nuts of exhaust manifold	screw down, screw up. Tightening torque 30 Nm as reference value.
Exhaust manifold (107)	take off, fit on.
Gasket (107/1)	replace.
Stud bolts in cylinder head	check, replace if necessary.
Leaktightness of all connection points	check with engine running.

Notes

Tightening torque of exhaust manifold to cylinder head increased from 23 Nm to 30 Nm (retightening discontinued).

Production breakpoint: as of September 1994

Model	Engine	Engine end no.	
		manual transmission	automatic transmission
124.104/107/126/129/186	605.911	024643	009028
124.131/191	606.910	006945	013048

Welded nut at clamp of corrugated pipe to exhaust manifold and to EGR valve discontinued.

Production breakpoint: as of May 1995

Model	Engine	Engine end no.	
		manual transmission	automatic transmission
124.104/107/126/129/186	605.911	035189	013722
124.131/191	606.910	009605	019587

Bolt for EGR clamp standardized.

Production breakpoint: as of July 1995

Model	Engine	Engine end no. manual transmission	Engine end no. automatic transmission
124.104/107/126/129/ 186	605.911	037539	014844
124.131/191	606.910	010136	020648

Stud bolt for exhaust manifold at cylinder head
standardized with engine 111.

Production breakpoint: as of June 1996

Model	Engine	Engine end no. manual transmission	Engine end no. automatic transmission
124.104/107/126/129/ 186	605.911	042115	016442