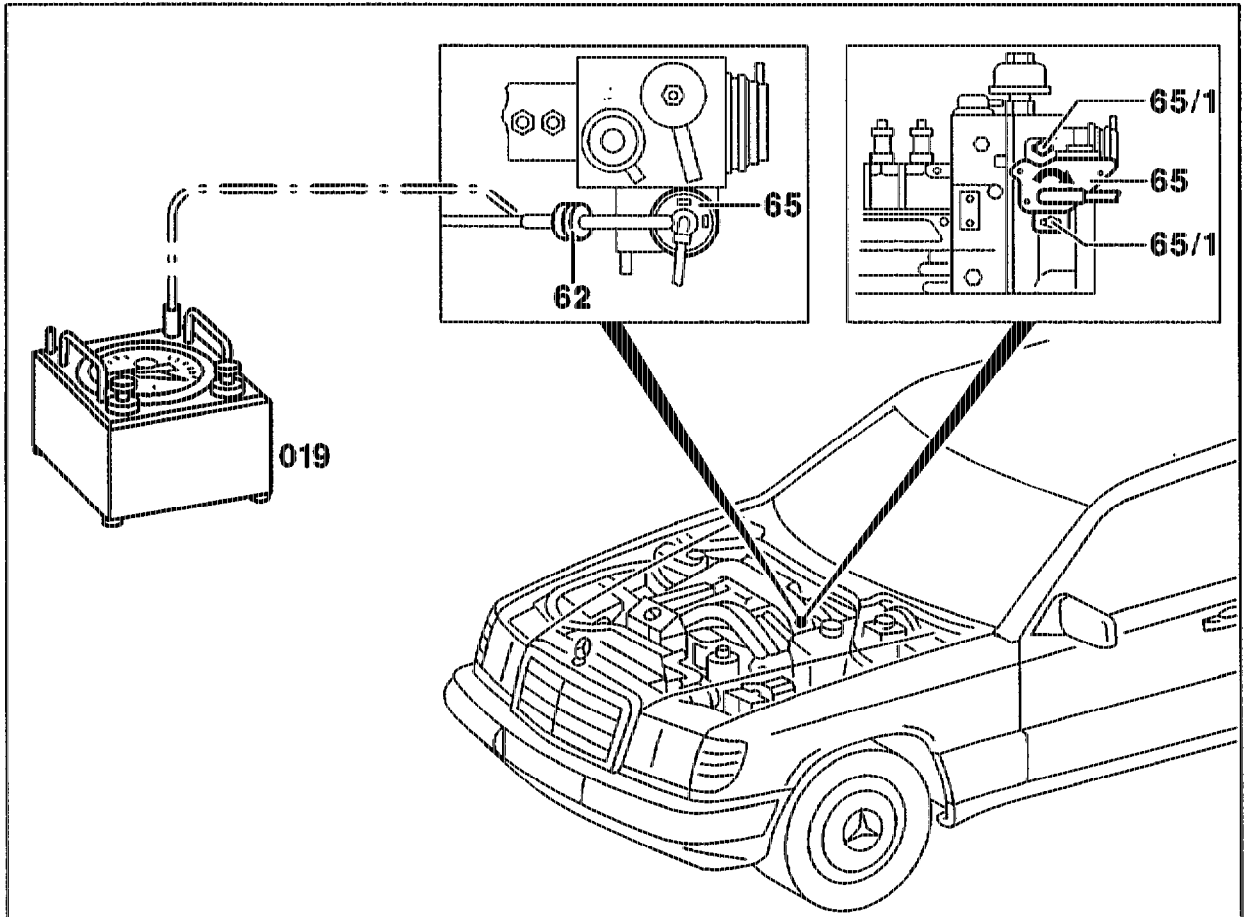


07.1-1826 Testing and adjusting vacuum control valve for automatic transmission

Operation no. of operation texts and work units or standard texts and flat rates:
07-1826



P07-6478-57

Testing

Vacuum line at damper (62)	detach.
Vacuum test (019)	connect to damper (62).
Vacuum	test with engine idling.
	Specification: > 350 mbar.
Engine	switch off.
Accelerator control linkage	move to full throttle stop.
	Specification: vacuum 0 mbar.

Note

If the specifications are not achieved:

- a) check adjustment of vacuum control valve (65).
- b) check vacuum line according to vacuum diagram; replace vacuum control valve (65), if necessary.

Repair instruction

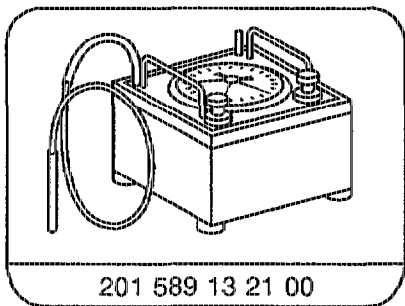
The vacuum control valves of manual and automatic transmission differ.

Adjusting

- Bolts (65/1)
- Accelerator control linkage
- Vacuum control valve (65)
- Bolts (65/1)

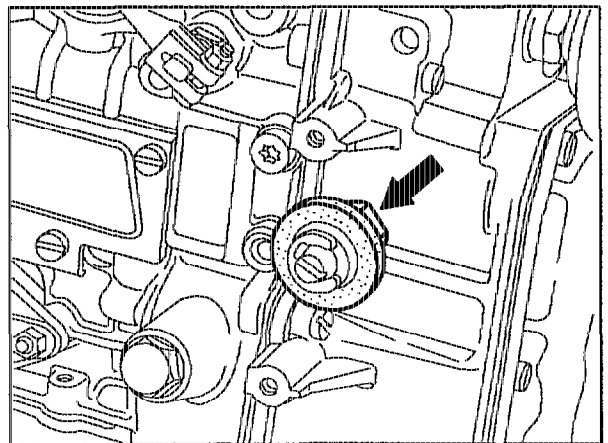
- slacken.
- move to full throttle stop (engine switched off).
- turn in direction of arrow until resistance is felt.
- tighten in this position.

Special tool



Note

A seal (arrow) is installed with the vacuum control valve to prevent dust and dirt getting into the valve.



P07-6505-13

Note

Vacuum control valve modified. Restrictor integrated in vacuum control valve; the restrictor in the vacuum pipes is thus discontinued.

Production breakpoint: as of July 1994

Model	Engine	Engine end no. automatic transmission
124.104/107/126/129/186	605.911	008454
202.131/191	606.910	012177