

**A15**

AR47.30-P-8212-01DA

Connecting diagram of evaporation
emission control system

**Connecting diagram of evaporation
emission control system HFM-SFI
models 124, 129, 140 without ski bag
with engine 104**

Shown on model 124

19a Ram intake manifold

19b Resonance intake manifold

75 Fuel tank

76 Vent valve

77 Activated charcoal canister

M16/6 Idle speed control (ISC) actuator

N3/4 HFM sequential multiport fuel
injection/ignition system (HFM-SFI)
control module

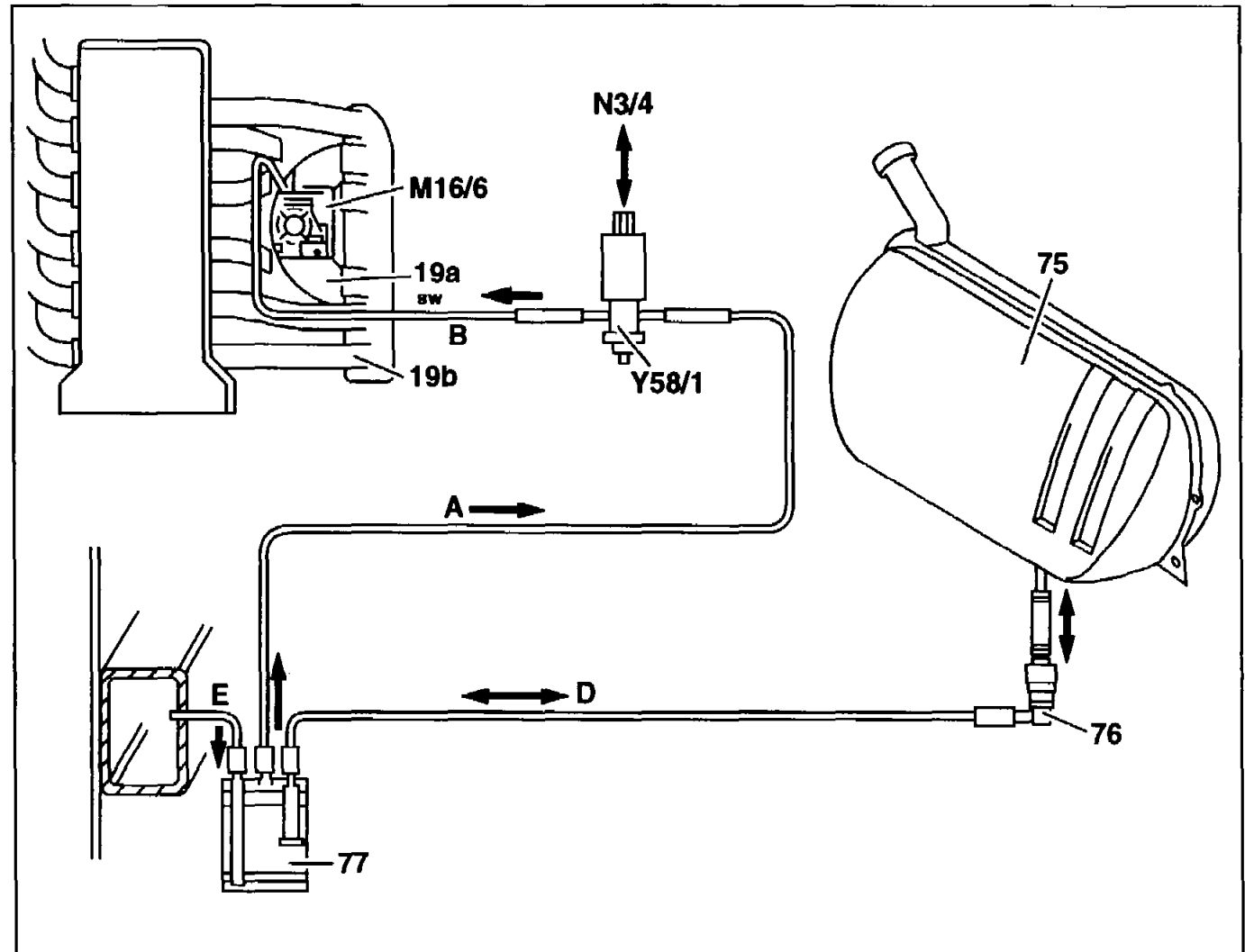
Y58/1 Purge switchover valve

A Activated charcoal canister/purge
switchover valve pipe

B Purge switchover valve/idle speed
control (ISC) actuator (M16/6) pipe

D Vent valve/activated charcoal
canister pipe

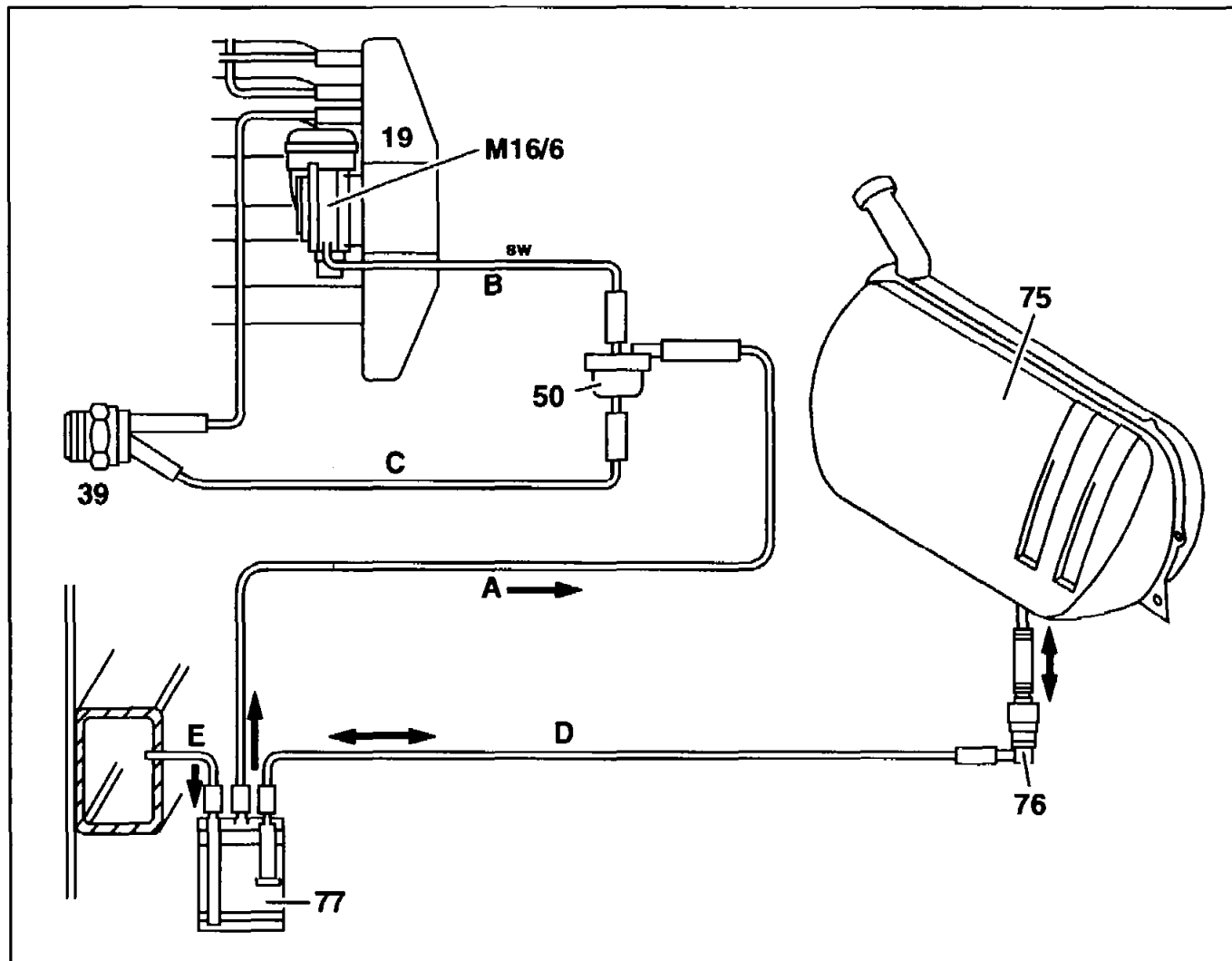
E Vent pipe





Connecting diagram of evaporation emission control system PEC 1st version model 124 with engine 111

- 19 Intake manifold
- 39 Thermo valve (opens at 70°C/
closes at 35°C)
- 50 Purge valve
- 75 Fuel tank
- 76 Vent valve
- 77 Activated charcoal canister
- M16/6 Idle speed control (ISC) actuator
- A Activated charcoal canister/purge valve pipe
- B Purge valve/idle speed control (ISC) actuator (M16/6) pipe
- C Purge valve/thermo valve pipe
- D Vent valve/activated charcoal canister pipe
- E Vent pipe

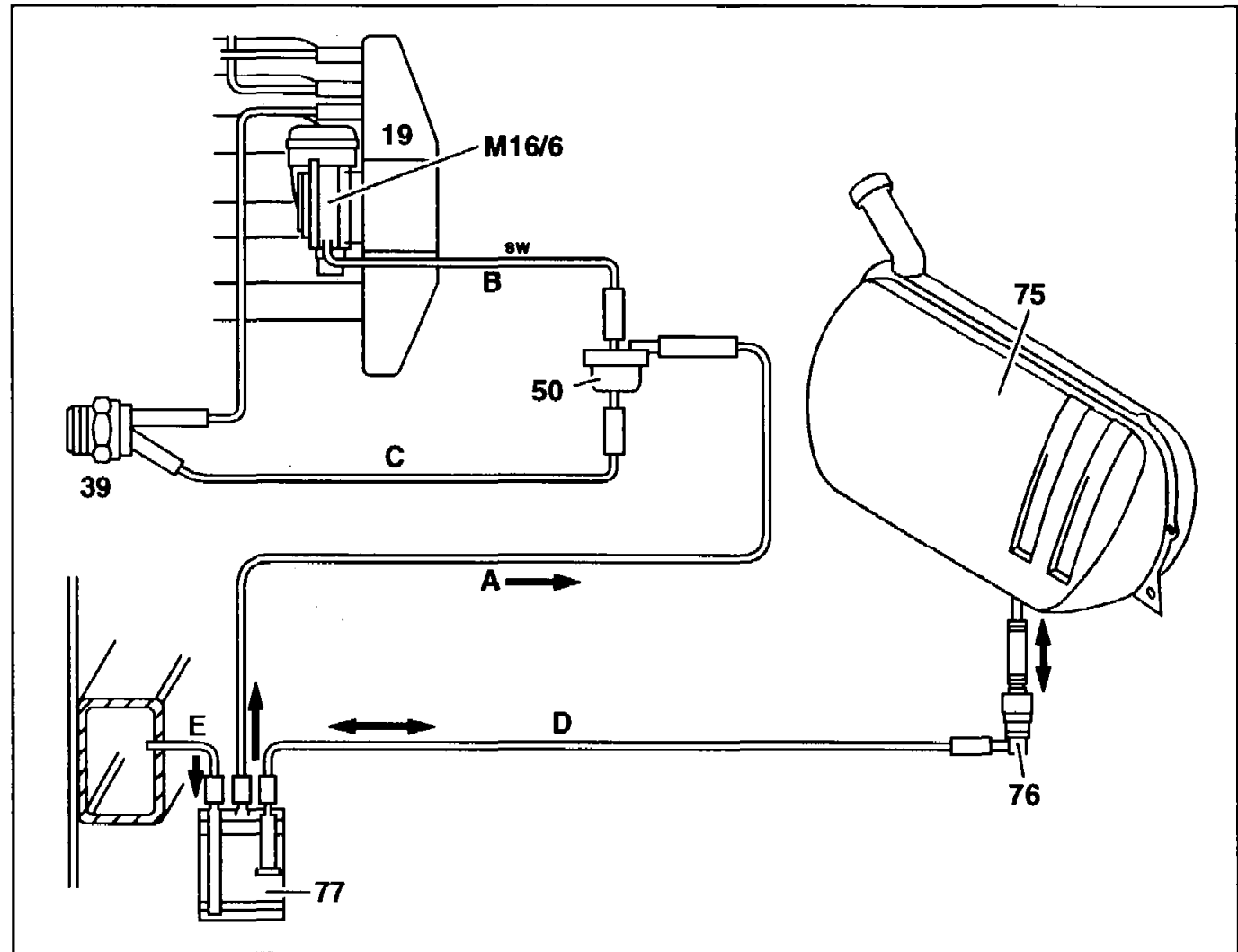




**Connecting diagram of evaporation
emission control system HFM-SFI
model 124 and PEC 2nd version
model 124 with engine 111**

Shown on engine 111 with HFM-SFI

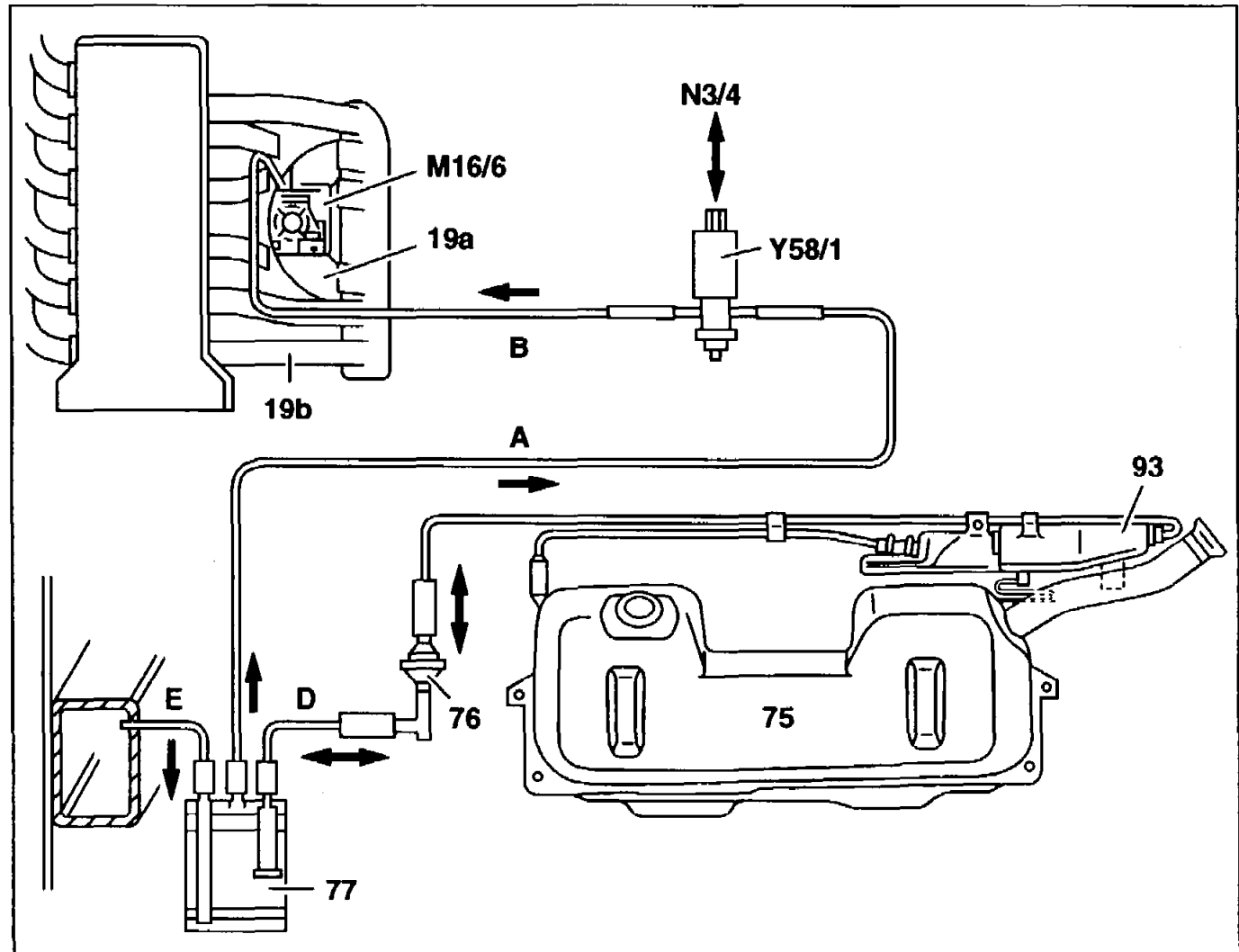
- 19 Intake manifold
- 75 Fuel tank
- 76 Vent valve
- 77 Activated charcoal canister
- M16/6 Idle speed control (ISC) actuator
- N3/4 HFM sequential multiport fuel injection/ignition system (HFM-SFI) control module
- Y58/1 Purge switchover valve
- A Activated charcoal canister/purge switchover valve pipe
- B Purge switchover valve/idle speed control (ISC) actuator (M16/6) pipe
- D Vent valve/activated charcoal canister pipe
- E Vent pipe



| | | | |
|---------------------------------------|--|--|--|
| <p>D15 AR47.30-P-8212-01DB</p> | <p>Connecting diagram of evaporation emission control system</p> | | |
|---------------------------------------|--|--|--|

Connecting diagram of evaporation emission control system HFM-SFI model 140, engine 104 with ski bag

- 19a Ram intake manifold
- 19b Resonance intake manifold
- 75 Fuel tank
- 76 Vent valve
- 77 Activated charcoal canister
- 93 Fuel expansion reservoir
- M16/6 Idle speed control (ISC) actuator
- N3/4 HFM sequential multiport fuel injection/ignition system (HFM-SFI) control module
- Y58/1 Purge switchover valve
- A Activated charcoal canister/purge switchover valve pipe
- B Purge switchover valve/idle speed control (ISC) actuator (M16/6) pipe
- D Vent valve/activated charcoal canister pipe
- E Vent pipe



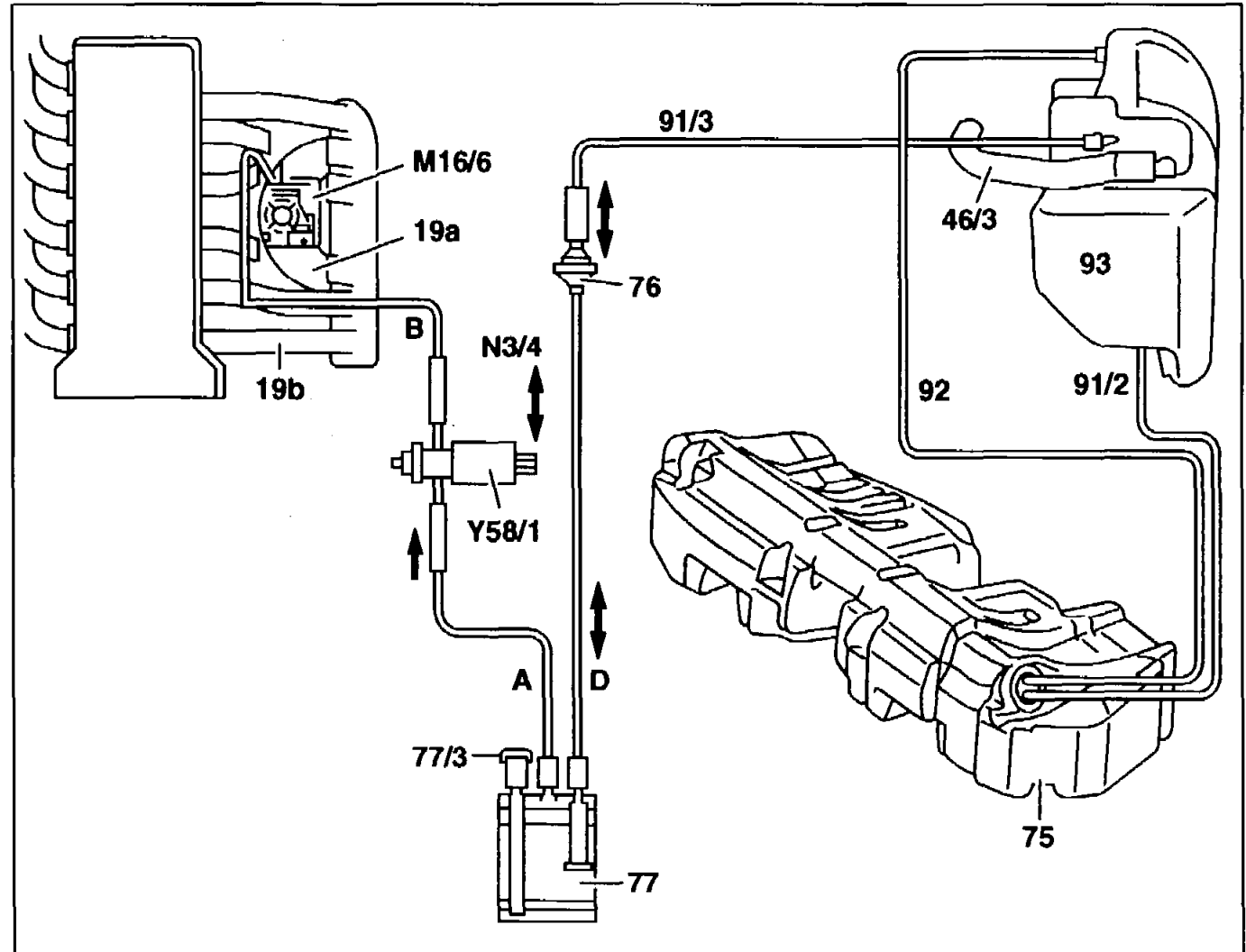
E15

AR47.30-P-8212-01DC

Connecting diagram of evaporation
emission control system

**Function diagram of evaporation emission
control system HFM-SFI
model 202.028 up to 7/96**

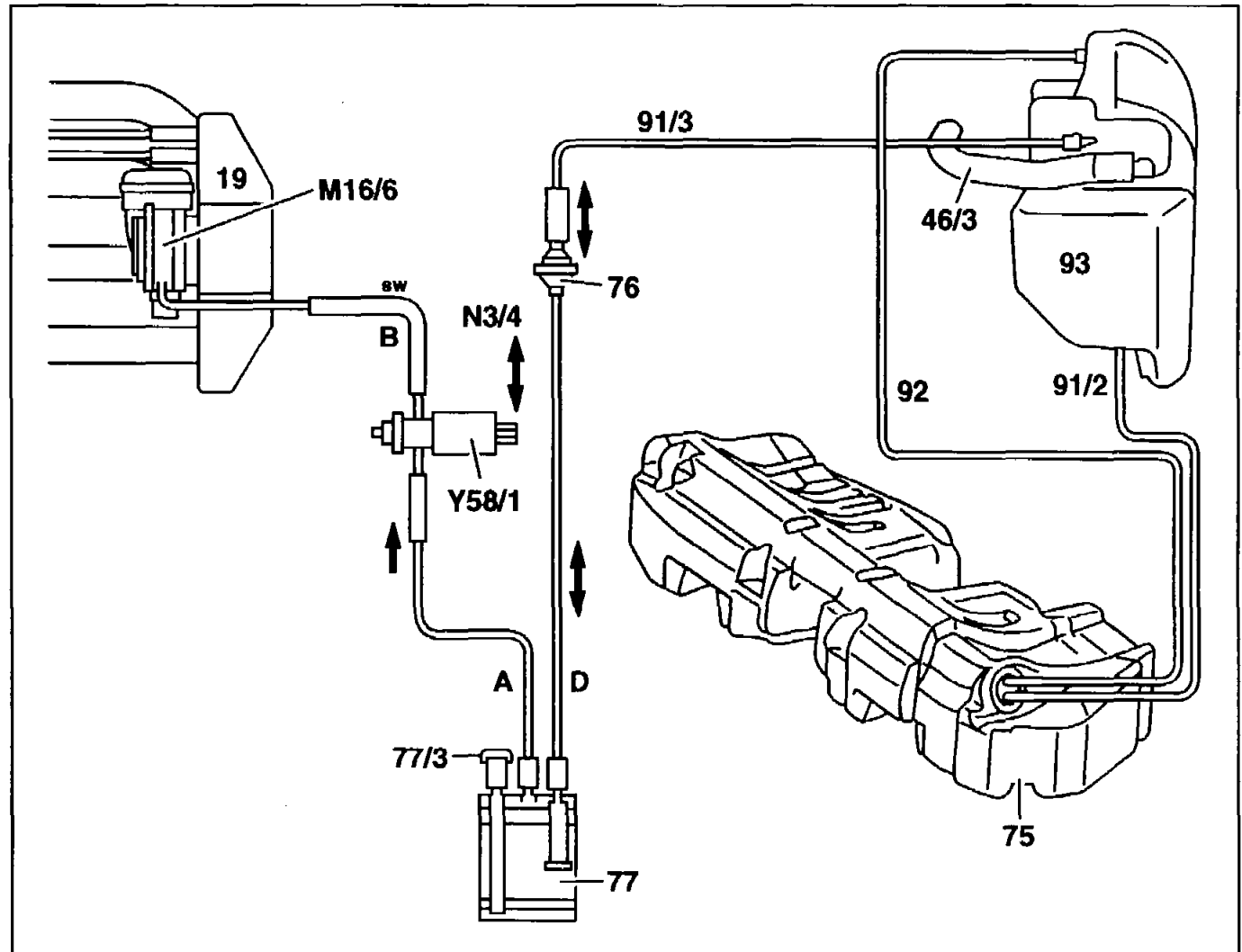
- 19a Ram intake manifold
 19b Resonance intake manifold
 46/3 Vent pipe to filler neck
 75 Fuel tank
 76 Vent valve
 77 Activated charcoal canister
 77/3 Air inlet cap
 91/2 Vent pipe for refuelling
 91/3 Air inlet and vent pipe to vent valve
 92 Air inlet and vent pipe from fuel
 tank
 93 Fuel expansion reservoir
 M16/6 Idle speed control (ISC) actuator
 N3/4 HFM sequential multiport fuel
 injection/ignition system (HFM-SFI)
 control module
 Y58/1 Purge switchover valve
 A Activated charcoal canister/purge
 valve pipe
 B Purge valve/idle speed control
 actuator (ISC, M16/6) pipe
 D Vent valve/activated charcoal
 canister pipe





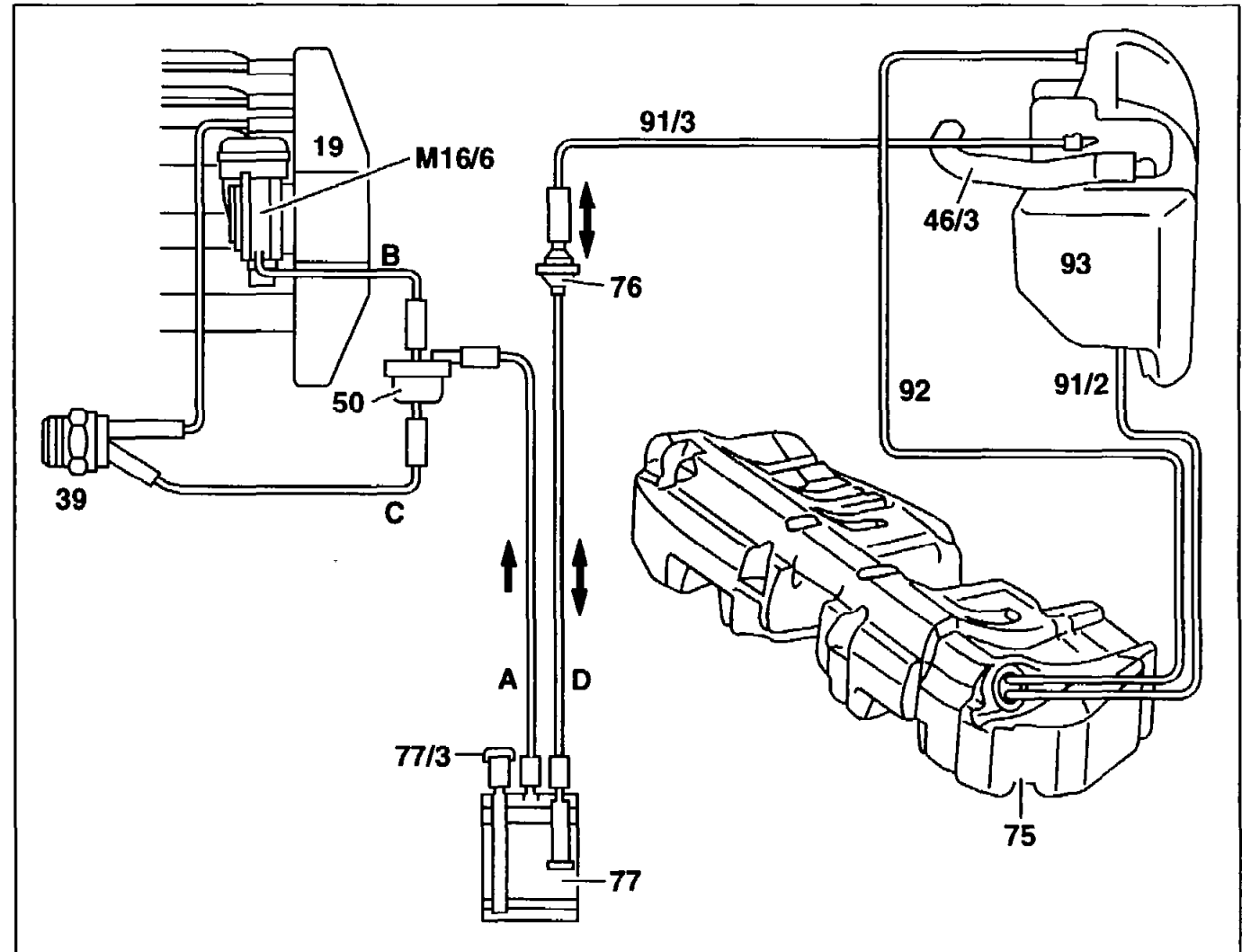
Connecting diagram of evaporation emission control system HFM-SFI model 202.022

- 19 Intake manifold
 - 46/3 Vent pipe to filler neck
 - 75 Fuel tank
 - 76 Vent valve
 - 77 Activated charcoal canister
 - 77/3 Air inlet cap
 - 91/2 Vent pipe for refuelling
 - 91/3 Air inlet and vent pipe to vent valve
 - 92 Air inlet and vent pipe from fuel tank
 - 93 Fuel expansion reservoir
 - M16/6 Idle speed control (ISC) actuator
 - N3/4 HFM sequential multiport fuel injection/ignition system (HFM-SFI) control module
 - Y58/1 Purge switchover valve
-
- A Activated charcoal canister/purge switchover valve pipe
 - B Purge switchover valve/idle speed control actuator (ISC, M16/6) pipe
 - D Vent valve/activated charcoal canister pipe



**Connecting diagram of evaporation
emission control system PEC
model 202 with engine 111**

- 19 Intake manifold
 - 39 Thermo valve (opens at 70°C/
closes at 35°C)
 - 46/3 Vent pipe to filler neck
 - 50 Purge valve
 - 75 Fuel tank
 - 76 Vent valve
 - 77 Activated charcoal canister
 - 77/3 Air inlet cap
 - 91/2 Vent pipe for refuelling
 - 91/3 Air inlet and vent pipe to vent valve
 - 92 Air inlet and vent pipe from fuel
tank
 - 93 Fuel expansion reservoir
 - M16/6 Idle speed control (ISC) actuator
-
- A Activated charcoal canister/purge
switchover valve pipe
 - B Purge switchover valve/idle speed
control actuator (ISC, M16/6) pipe
 - D Vent valve/activated charcoal
canister pipe

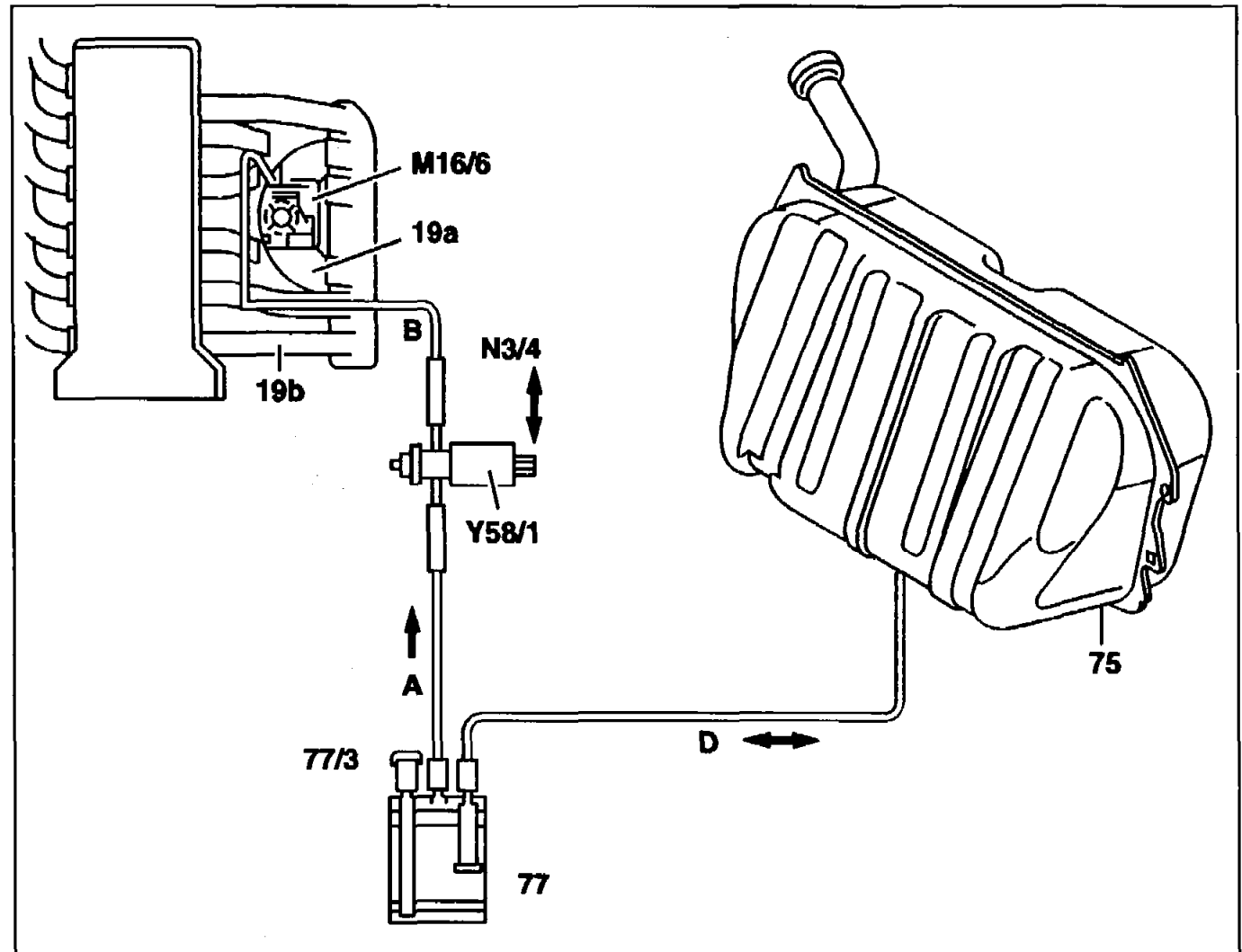


**H15**

AR47.30-P-8212-01DE

Connecting diagram of evaporation
emission control system**Connecting diagram of evaporation
emission control system HFM-SFI
model 210 with engine 104**

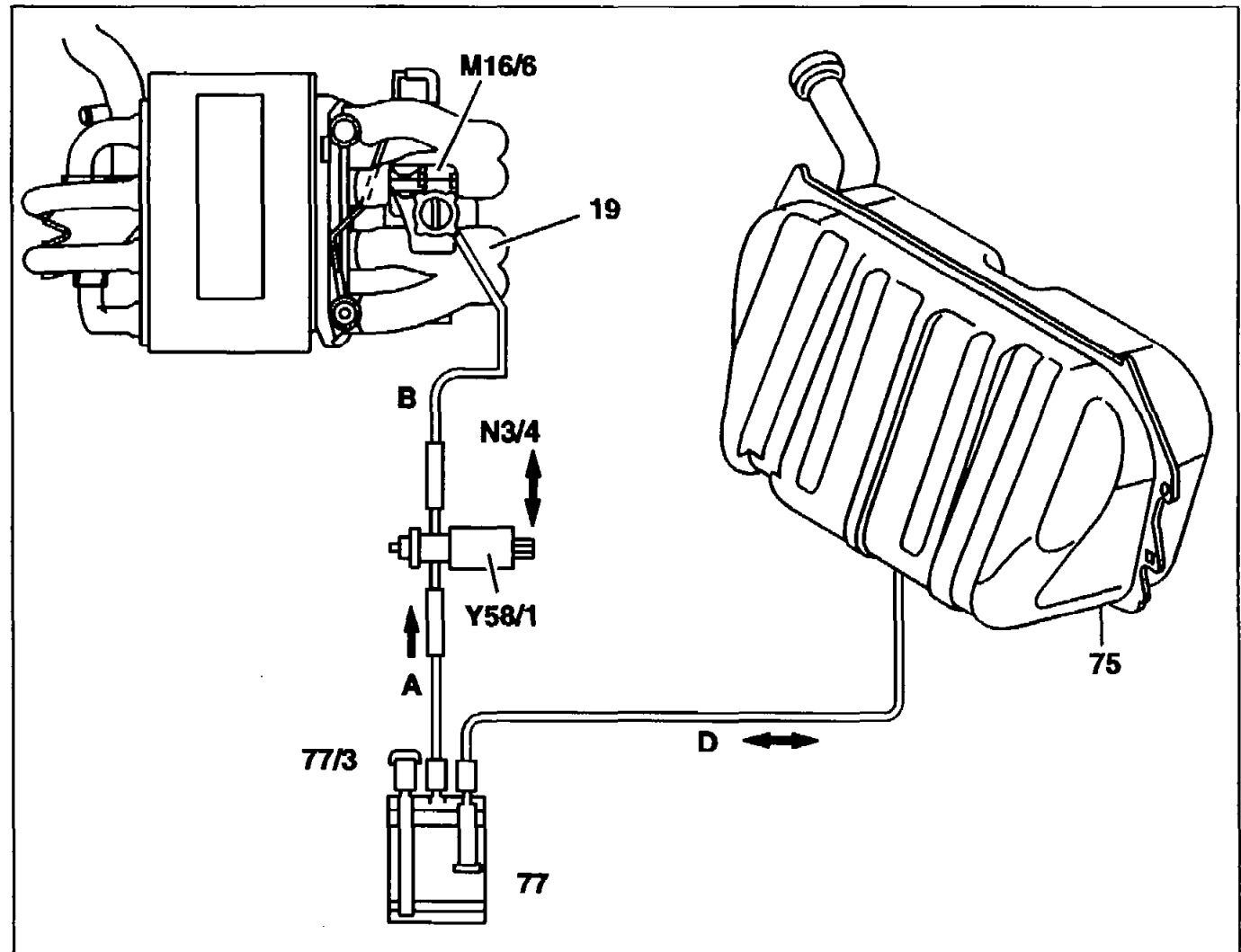
- 19a Ram intake manifold
- 19b Resonance intake manifold
- 75 Fuel tank
- 77 Activated charcoal canister
- 77/3 Air inlet cap
- M16/6 Idle speed control (ISC) actuator
- N3/4 HFM sequential multiport fuel injection/ignition system (HFM-SFI) control module
- Y58/1 Purge switchover valve
- A Activated charcoal canister/purge switchover valve pipe
- B Purge switchover valve/idle speed control actuator (ISC, M16/6) pipe
- D Vent valve/activated charcoal canister pipe





**Connecting diagram of evaporation
emission control system HFM-SFI
model 170, 210 with engine 111**

- 19 Intake manifold
- 75 Fuel tank
- 77 Activated charcoal canister
- 77/3 Air inlet cap
- M16/6 Idle speed control (ISC) actuator
- N3/4 HFM sequential multiport fuel
injection/ignition system (HFM-SFI)
control module
- Y58/1 Purge switchover valve
- A Activated charcoal canister/purge
switchover valve pipe
- B Purge switchover valve/idle speed
control actuator (ISC, M16/6) pipe
- D Vent valve/activated charcoal
canister pipe





| | | | |
|--------------------------------|--|--|--|
| K15 AR47.30-P-8212-01DF | Connection diagram of evaporative emission control system | | |
|--------------------------------|--|--|--|

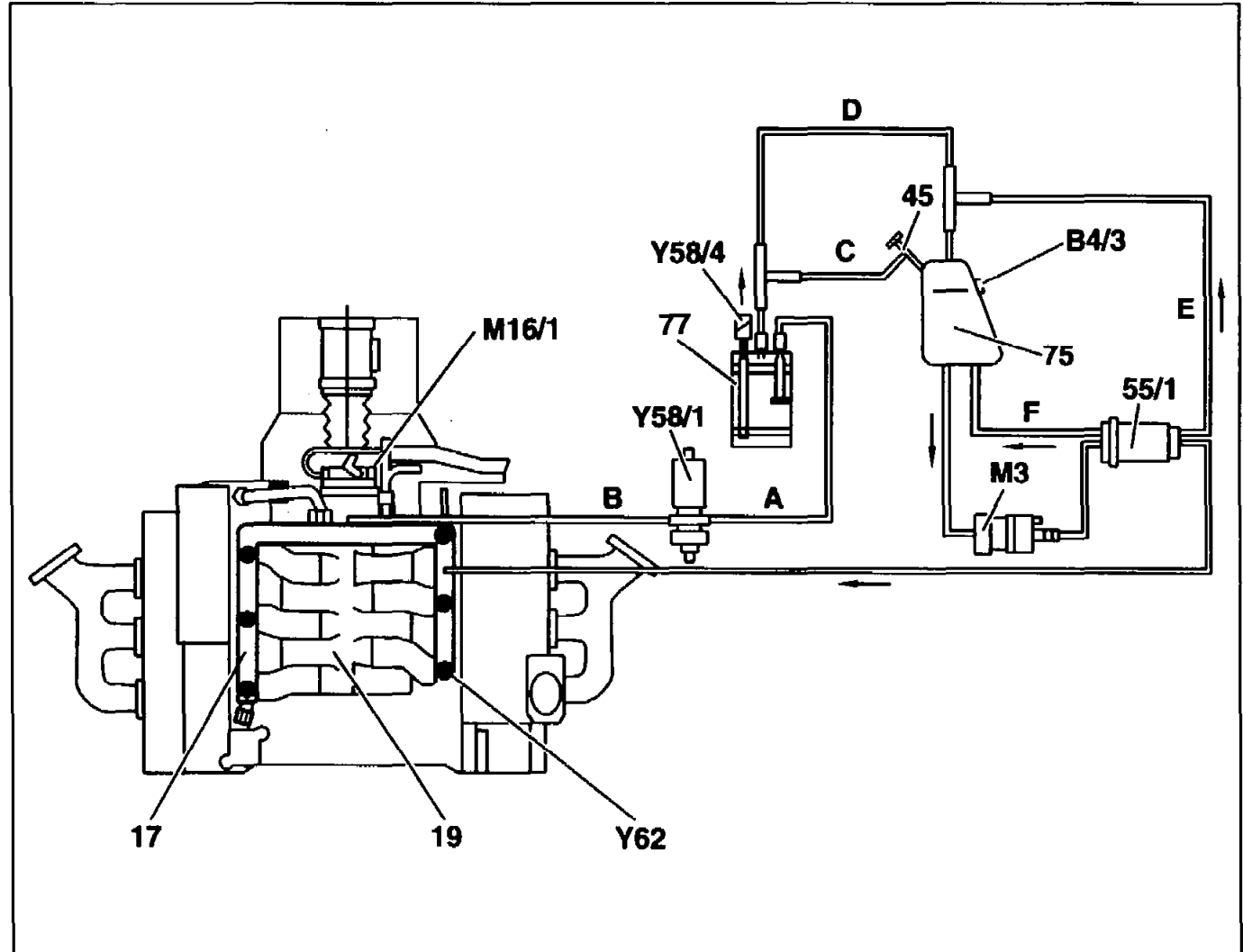
Connection diagram evaporative emission control system engine 112 (USA) version up to 09/97

- 17 Fuel rail
- 19 Intake manifold
- 45 Fuel filler neck
- 55/1 Fuel filter
- 75 Fuel tank
- 77 Activated charcoal canister

- B4/3 Pressure sensor
- M3 Fuel pump
- M16/1 Electronic accelerator actuator
- Y58/1 Purge control valve
- Y58/4 Activated charcoal canister shutoff valve
- Y62 Fuel injector

- A Activated charcoal canister - purge control valve line
- B Purge control valve - intake manifold line
- C Activated charcoal canister - fuel tank line

- D Fuel tank - activated charcoal canister line
- E Fuel filter - fuel tank degasing line
- F Fuel filter - fuel tank return flow line



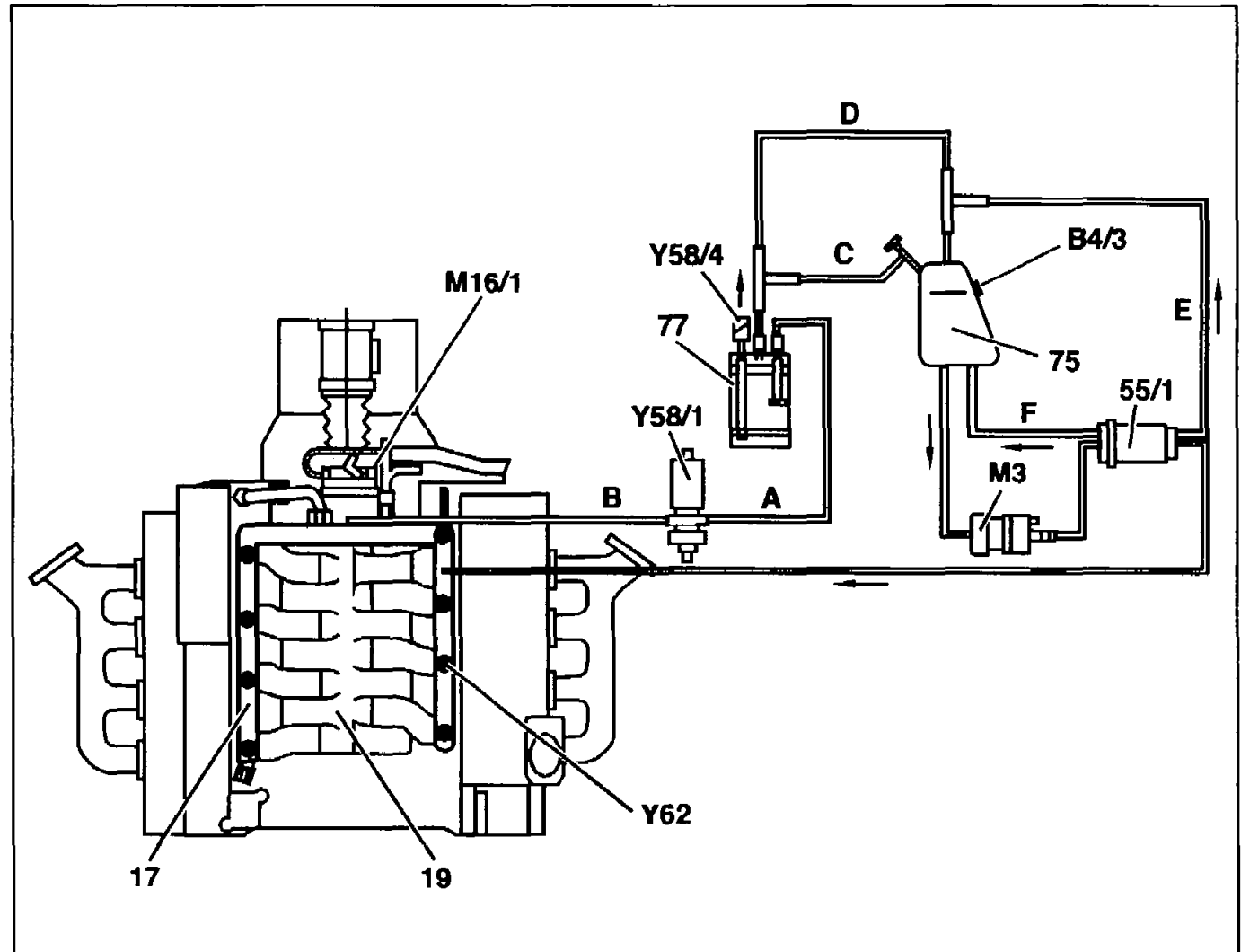
P47.30-0293-06



| | | | |
|--------------------------------|---|---------------------------|--|
| L15 AR47.30-P-8212-01DG | Connection diagram of evaporative emission control system | Model 210 with engine 113 | |
|--------------------------------|---|---------------------------|--|

Connection diagram of evaporative emission control system model 113 version (USA) up to 09.97

- 17 Fuel rail
- 19 Intake manifold
- 55/1 Fuel filter with integrated fuel pressure regulator
- 75 Fuel tank
- 77 Activated charcoal filter
- B4/3 Pressure sensor
- M3 Fuel pump
- M16/1 Electronic accelerator actuator
- Y58/1 Purge control valve
- Y58/4 Purge shutoff valve
- Y62 Fuel injection valve
- A Activated charcoal filter - purge control valve pipe
- B Purge control valve - intake manifold pipe
- C Activated charcoal filter - fuel tank vent pipe
- D Fuel tank - activated charcoal filter pipe
- E Fuel tank - fuel tank degassing pipe
- F Fuel filter - fuel tank fuel return flow pipe



| | | | |
|---------------------------------------|--|--|--|
| <p>N15 AR47.30-P-8212-01DH</p> | <p>Connection diagram of evaporative emission control system</p> | | |
|---------------------------------------|--|--|--|

Connection diagram of evaporative emission control system engine 112 version

(USA) as of 09/97

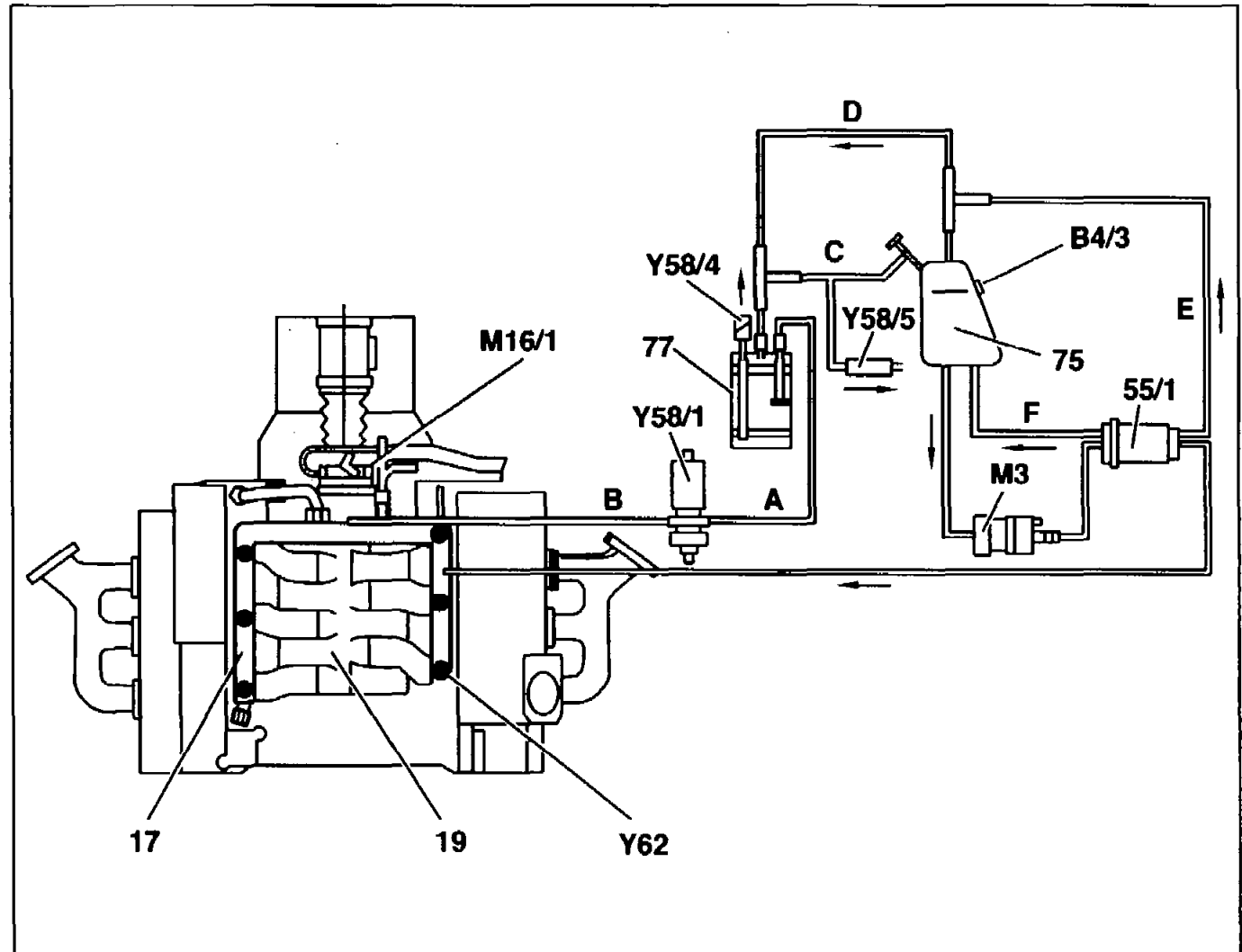
- 17 Fuel rail
- 19 Intake manifold
- 55/1 Fuel filter
- 75 Fuel tank
- 77 Activated charcoal filter

- B4/3 Pressure sensor
- M3 Fuel pump
- M16/1 Electronic accelerator actuator

- Y58/1 Purge control valve
- Y58/4 Activated charcoal filter shutoff valve
- Y58/5 Pressure relief valve (ORVR)
- Y62 Fuel injector

- A Activated charcoal filter - purge control valve line
- B Purge control valve - intake manifold line
- C Activated charcoal filter - fuel tank line

- D Fuel tank - activated charcoal filter line
- E Fuel filter - fuel tank degassing line
- F Fuel filter - fuel tank return flow line



P47.30-2007-06

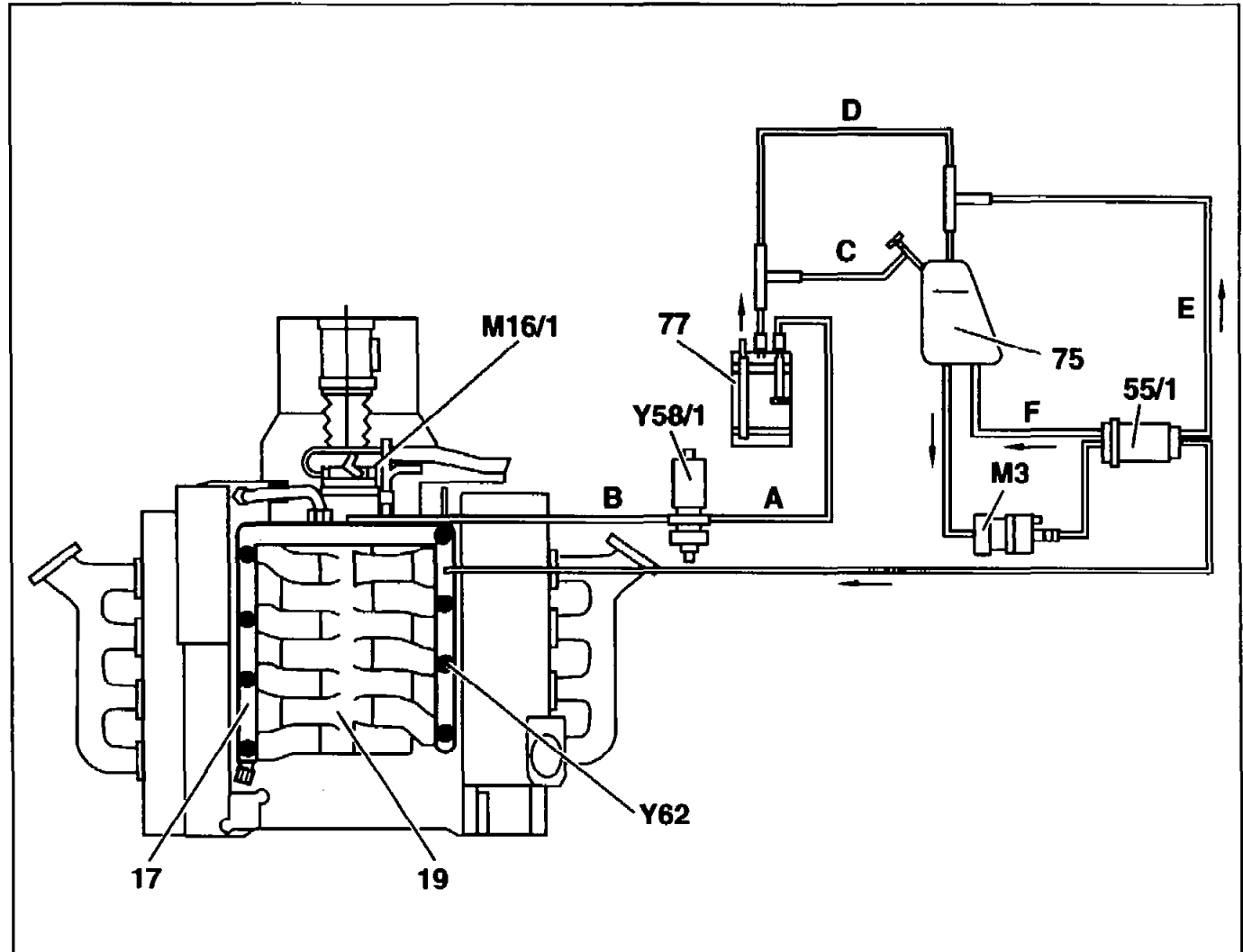


015

AR47.30-P-8212-01DI

Connection diagram of evaporative
emission control system**Connection diagram of evaporative
emission control system engine 113 as of
09/97**

- 17 Fuel rail
 19 Intake manifold
 55/1 Fuel filter with integrated fuel
 pressure regulator
 75 Fuel tank
 77 Activated charcoal filter
 M3 Fuel pump
 M16/1 Electronic accelerator actuator
 Y58/1 Purge control valve
 Y62 Fuel injector
 A Activated charcoal filter - purge
 control valve line
 B Purge control valve - intake
 manifold line
 C Activated charcoal filter - fuel tank
 vent line
 D Fuel tank - activated charcoal filter
 line
 E Fuel filter - fuel tank degassing line
 F Fuel filter - fuel tank return flow
 line

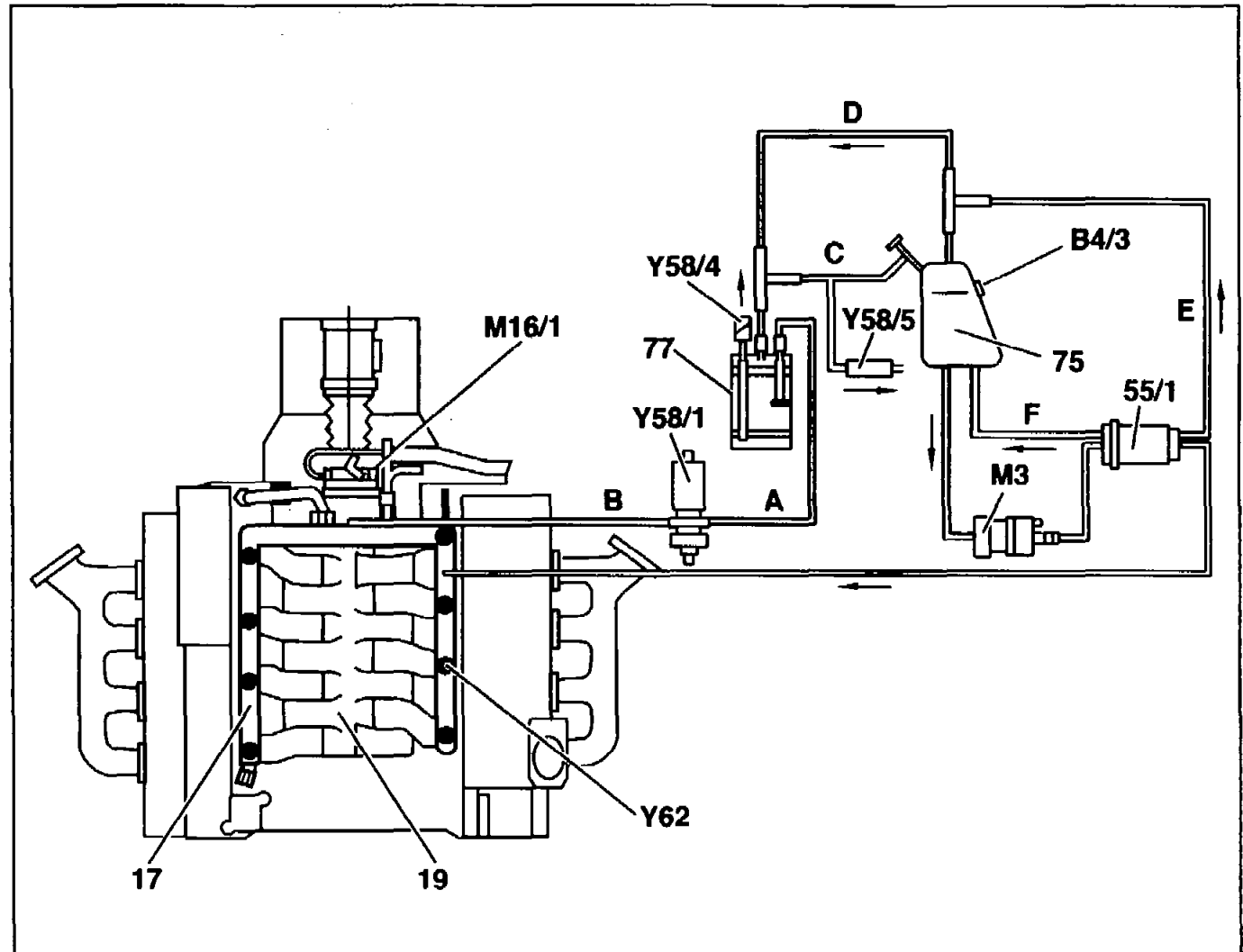


P15

AR47.30-P-8212-01DJ

Connection diagram of evaporative
emission control system**Connection diagram of evaporative
emission control system engine 113 version****(USA)** as of 09.97

- 17 Fuel rail
 19 Intake manifold
 55/1 Fuel filter with integrated fuel
 pressure regulator
 75 Fuel tank
 77 Activated charcoal filter
 B4/3 Pressure sensor
 M3 Fuel pump
 M16/1 Electronic accelerator actuator
 Y58/1 Purge control valve
 Y58/5 Pressure relief valve (ORVR)
 Y62 Fuel injector
 A Activated charcoal filter - purge
 control valve line
 B Purge control valve - intake
 manifold line
 C Activated charcoal filter - fuel tank
 vent line
 D Fuel tank - activated charcoal filter
 line
 E Fuel filter - fuel tank degassing line
 F Fuel filter - fuel tank return flow
 line



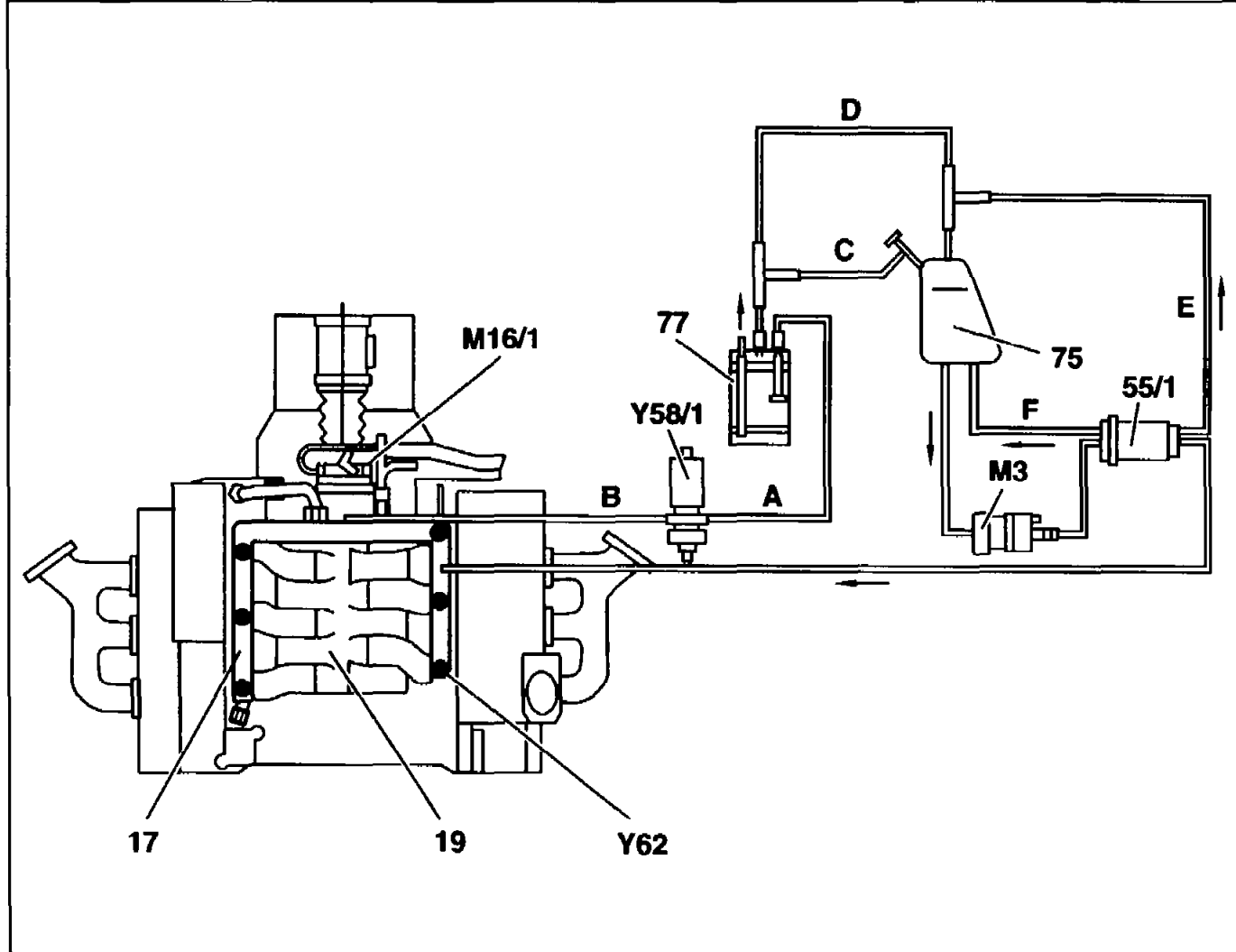
P47.30-2009-06



| | | | | |
|------------|---------------------|---|--|--|
| A16 | AR47.30-P-8212-01DK | Connection diagram of evaporative emission control system | | |
|------------|---------------------|---|--|--|

Connection diagram of evaporative emission control system engine 112 as of 09/97

- 17 Fuel rail
- 19 Intake manifold
- 45 Filler neck (with connection for collecting fuel vapors when refuelling ORVR)
- 55/1 Fuel filter
- 75 Fuel tank
- 77 Activated charcoal filter
- M3 Fuel pump
- M16/1 Electronic accelerator actuator
- Y58/1 Purge control valve
- Y62 Fuel injector
- A Activated charcoal filter - purge control valve line
- B Purge control valve - intake manifold line
- C Activated charcoal filter - fuel tank line



P47.30-2008-06

- D Fuel tank - activated charcoal filter line
- E Fuel filter - fuel tank degassing line
- F Fuel filter - fuel tank return flow line

| | | | |
|---------------------------------------|--|--|--|
| <p>B16 AR47.30-P-8212-01DL</p> | <p>Connection diagram of evaporative emission control system</p> | | |
|---------------------------------------|--|--|--|

Connection diagram

Evaporative emission control system

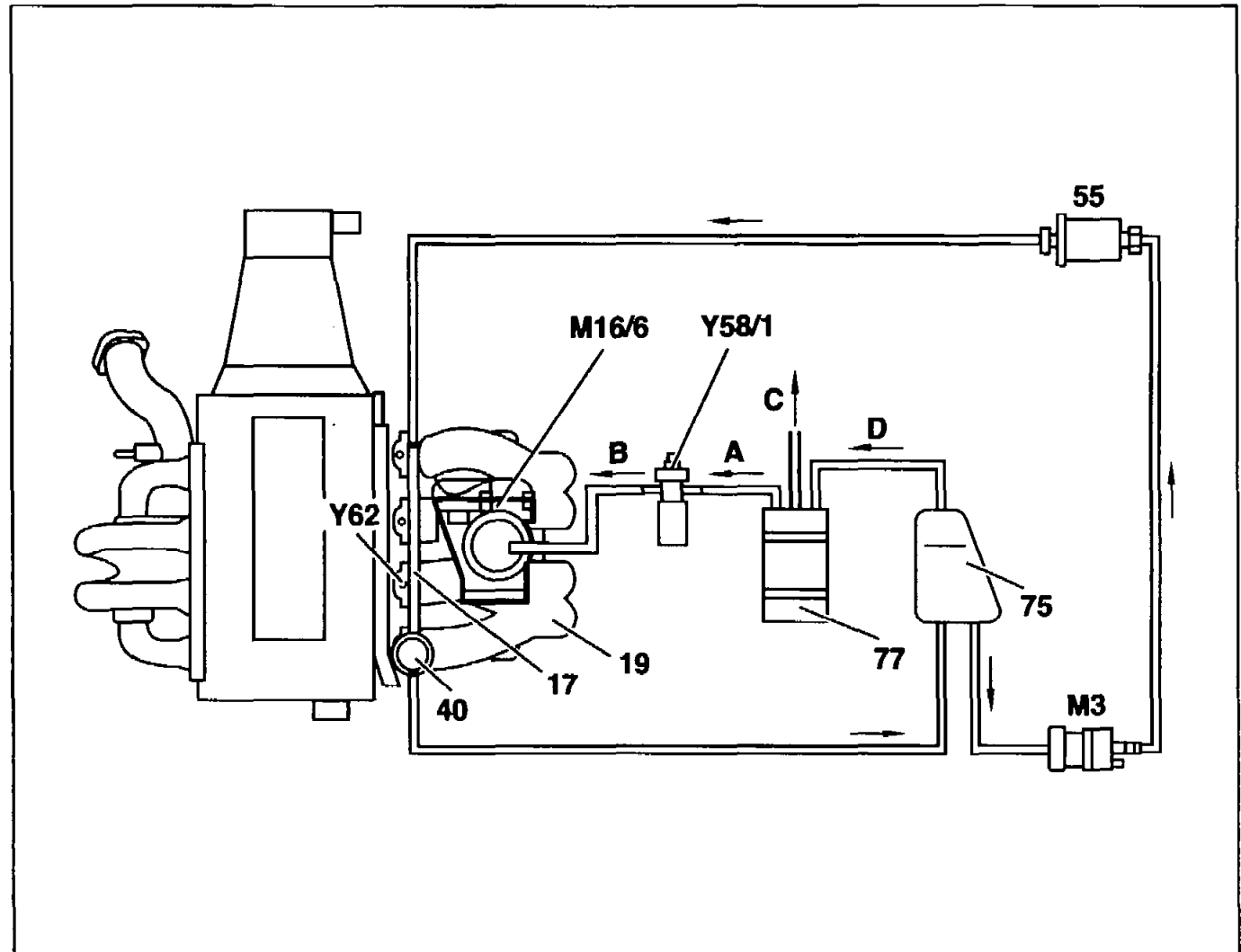
Engine 111.921/42/45/46/70/74

without code 923 low emission D3

- 17 Fuel rail
- 19 Intake manifold
- 40 Diaphragm pressure regulator
- 55 Fuel filter
- 75 Fuel tank
- 77 Activated charcoal canister

- M3 Fuel pump
- M16/6 Idle speed control (ISC) actuator
- Y58/1 Purge control valve
- Y62 Fuel injector

- A Activated charcoal canister - purge control valve line
- B Purge control valve - idle speed control (ISC) actuator line
- C Vent line
- D Fuel tank - activated charcoal canister line



**C16**

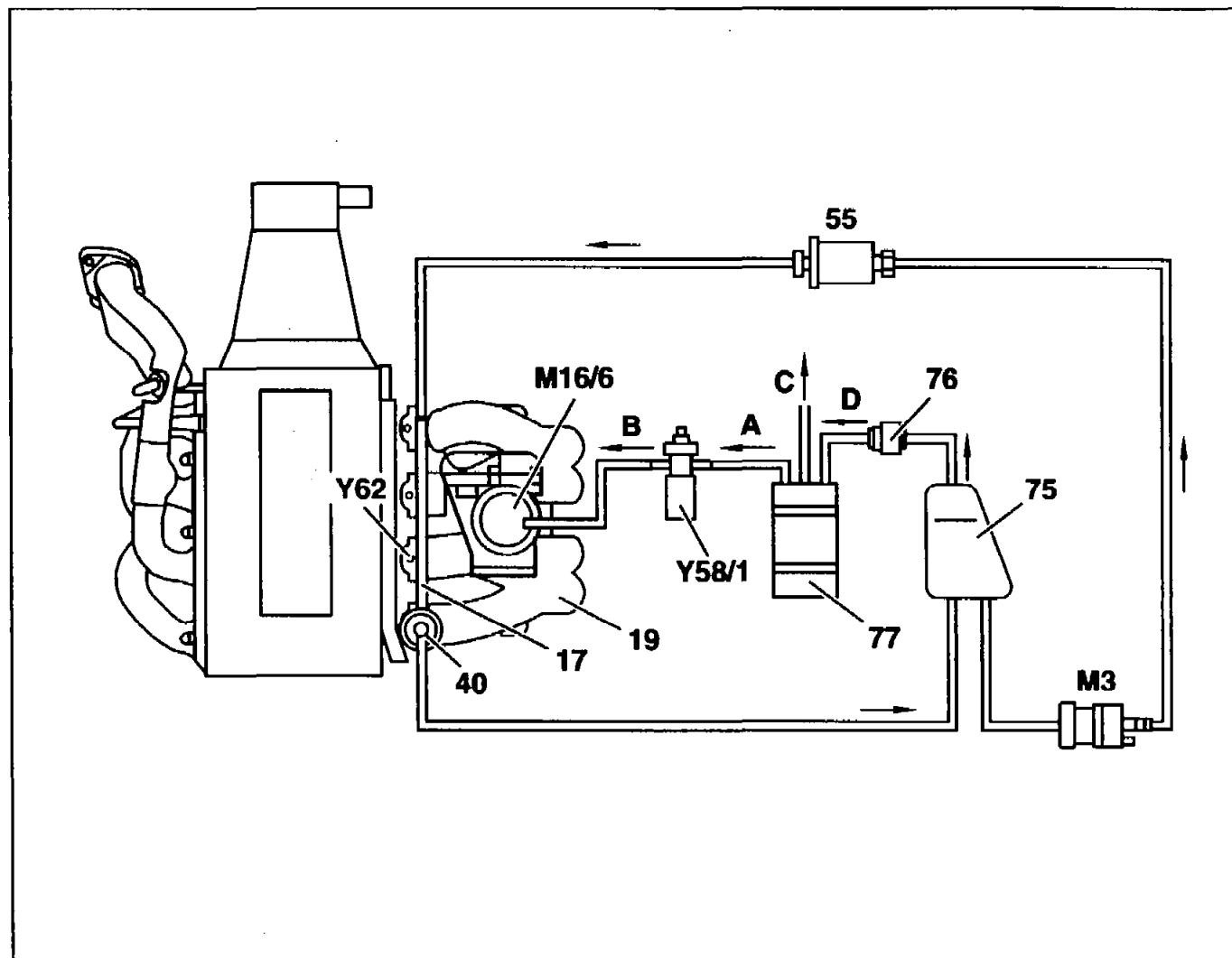
AR47.30-P-8212-01DM

Connection diagram of evaporative
emission control system**Connection diagram****Evaporative emission control system****Engine 111.921/42/45/46/70/74****with code 923 low emission D3**

- 17 Fuel rail
- 19 Intake manifold
- 40 Diaphragm pressure regulator
- 55 Fuel filter
- 75 Fuel tank
- 76 Vent valve (only model 170)
- 77 Activated charcoal canister
- M3 Fuel pump

- M16/6 Idle speed control (ISC) actuator
- Y58/1 Purge control valve
- Y62 Fuel injector

- A Activated charcoal canister - purge control valve line
- B Purge control valve - idle speed control (ISC) actuator line
- C Vent line
- D Fuel tank - activated charcoal canister line



**D16**

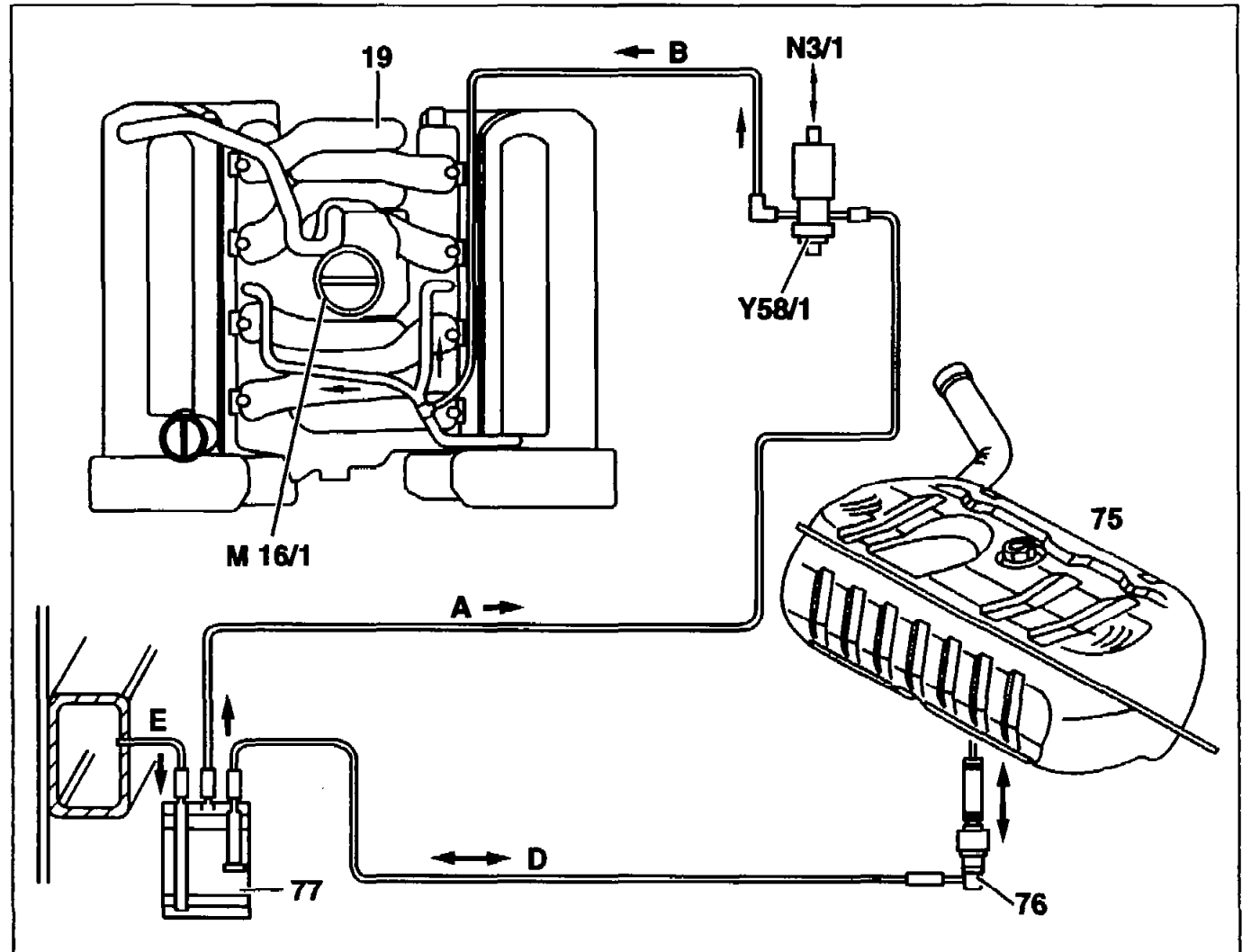
AR47.30-P-8212-01EA

Connection diagram of evaporative
emission control system

Engine 119.97

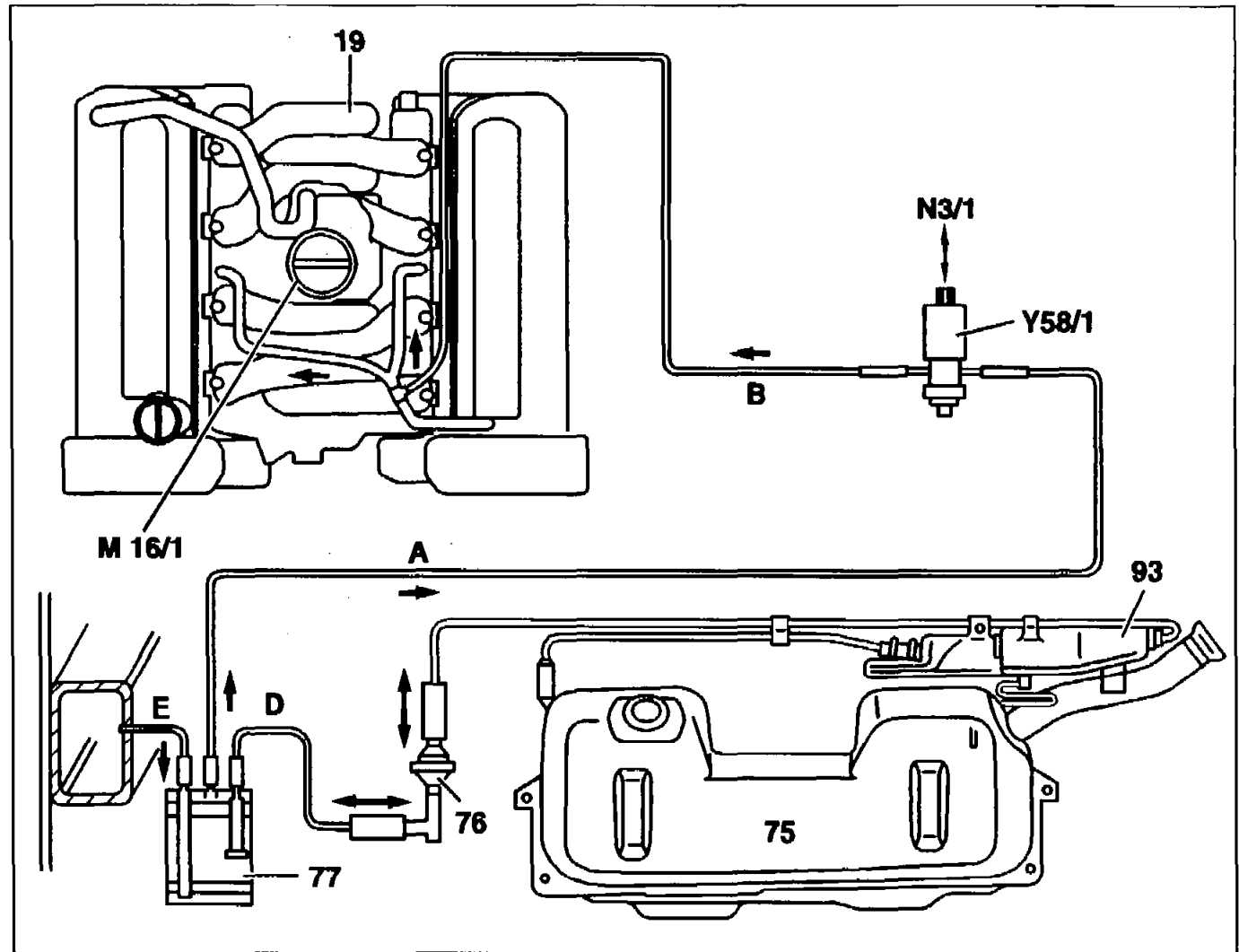
**Connection diagram of LH-SFI evaporative
emission control system model 129, 140
without skibag with engine 119.97**

- 19 Intake manifold
- 75 Fuel tank
- 76 Vent valve
- 77 Activated charcoal filter
- M16/1 Electronic accelerator (EA)/cruise control (CC)/idle speed control (ISC) actuator
- N3/1 Air hot wire (LH-SFI) control module
- Y58/1 Purge control valve
- A Activated charcoal filter – purge control valve pipe
- B Purge control valve – actuator (M16/1) pipe
- D Vent valve – activated charcoal filter pipe
- E Vent pipe



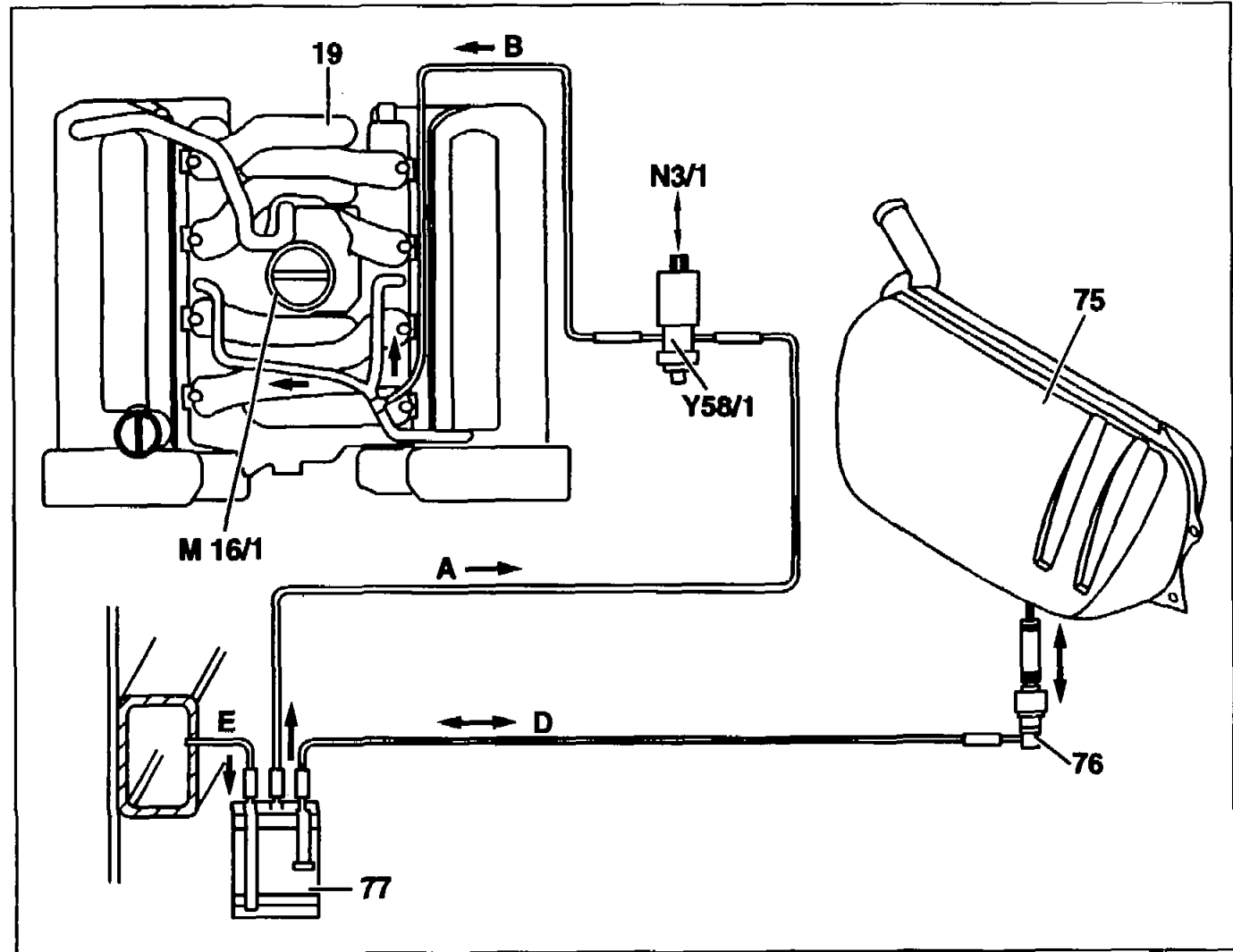
Connection diagram of LH-SFI evaporative emission control system model 140 with skibag with engine 119.97

- 19 Intake manifold
- 75 Fuel tank
- 76 Vent valve
- 77 Activated charcoal filter
- 93 Fuel expansion reservoir
- M16/1 Electronic accelerator (EA)/cruise control (CC)/idle speed control (ISC) actuator
- N3/1 Air hot wire (LH-SFI) control module
- Y58/1 Purge control valve
- A Activated charcoal filter – purge control valve pipe
- B Purge control valve – actuator (M16/1) pipe
- D Vent valve – activated charcoal filter pipe
- E Vent pipe



Connection diagram of LH-SFI evaporative emission control system model 124 with engine 119.97

- 19 Intake manifold
- 75 Fuel tank
- 76 Vent valve
- 77 Activated charcoal filter
- M16/1 Electronic accelerator (EA)/cruise control (CC)/idle speed control (ISC) actuator
- N3/1 Air hot wire (LH-SFI) control module
- Y58/1 Purge control valve
- A Activated charcoal filter – purge control valve pipe
- B Purge control valve – actuator (M16/1) pipe
- D Vent valve – activated charcoal filter pipe
- E Vent pipe



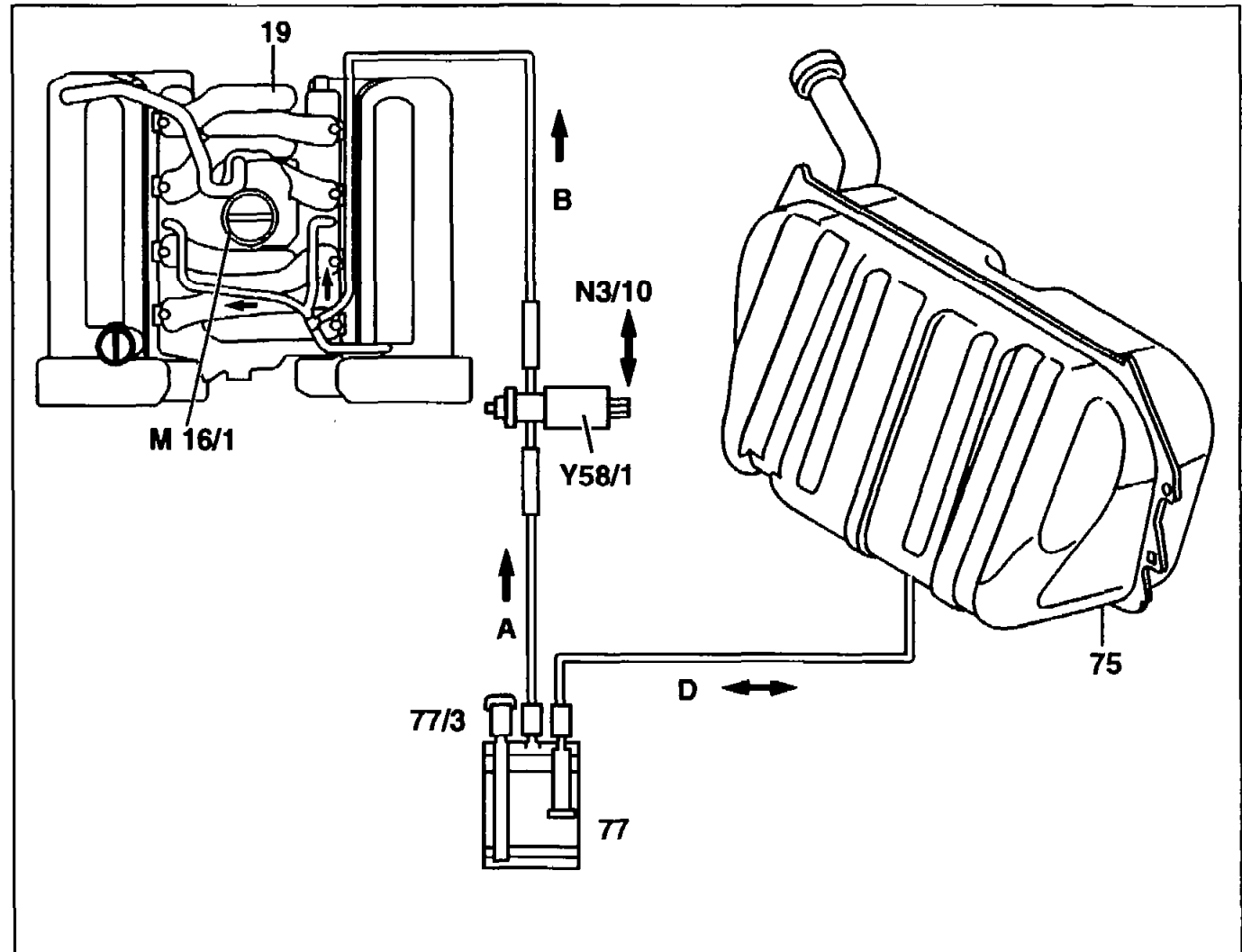
G16

AR47.30-P-8212-01EB

Function diagram of evaporative emission control system

Connection diagram of evaporative emission control system, ME-SFI model 129, 140, 210 with engine 119.98

- 19 Suction pipe
- 75 Fuel tank
- 76 Vent valve
- 77 Activated charcoal canister
- M16/1 Electronic accelerator (EA)/cruise control (CC)/idle speed control (ISC) actuator
- N3/10 Motor electronics (ME-SFI) control module
- Y58/1 Purge control valve
- A Activated charcoal canister – purge control valve pipe
- B Purge control valve – actuator (M16/1) pipe
- D Fuel tank – activated charcoal canister pipe



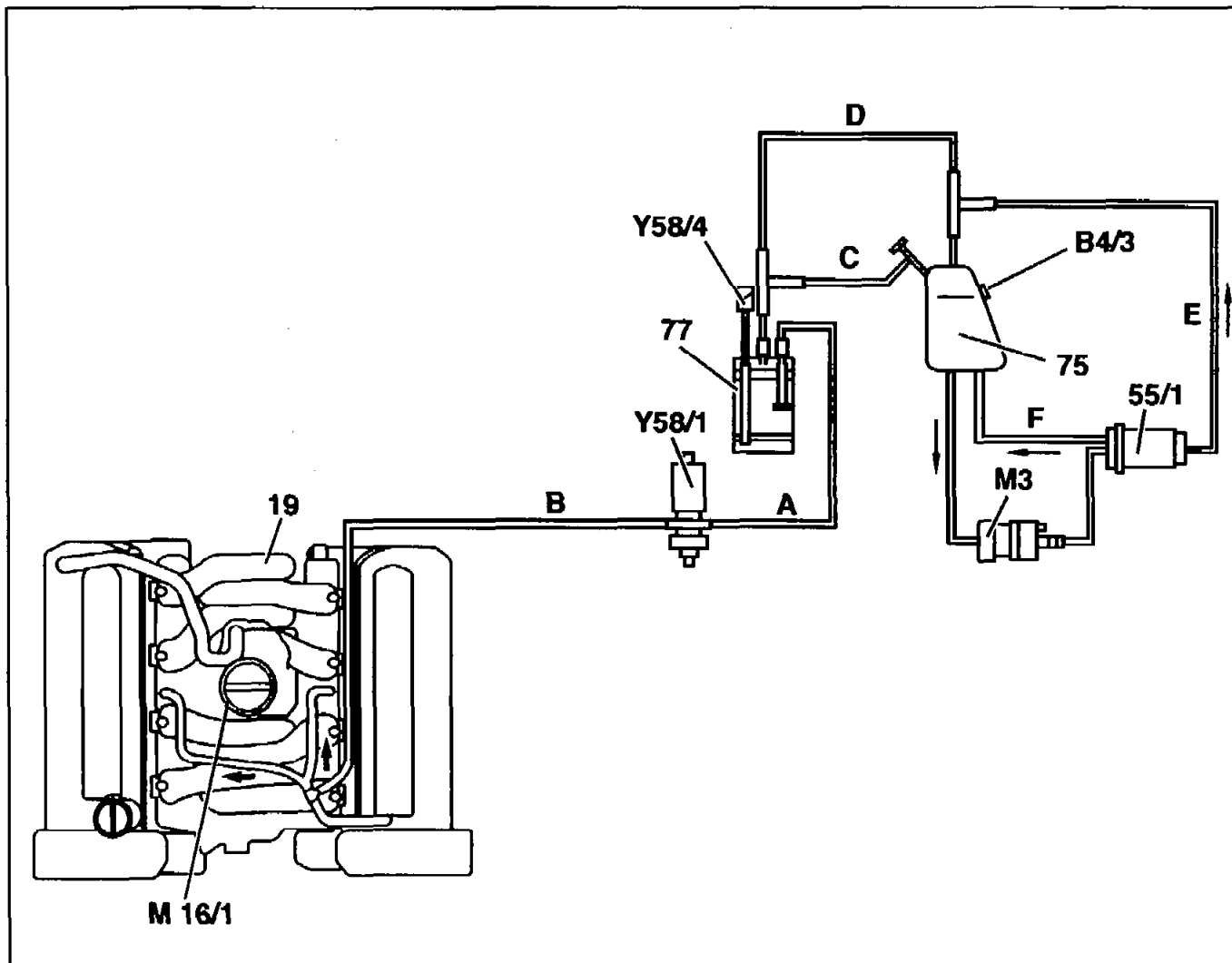


| | | | |
|--------------------------------|---|--|--|
| H16 AR47.30-P-8212-01EC | Connection diagram of evaporative emission control system | | |
|--------------------------------|---|--|--|

Connection diagram of evaporative emission control system model 129 with engine 119

Model Year 98 version (USA)

- 19 Suction pipe
- 55/1 Fuel filter
- 75 Fuel tank
- 77 Activated charcoal canister
- B4/3 Pressure sensor
- M3 Fuel pump
- M16/1 Electronic accelerator actuator
- Y58/1 Purge control valve
- Y58/4 Activated charcoal canister shutoff valve
- A Activated charcoal canister - purge control valve pipe
- B Purge control valve - intake manifold pipe
- C Activated charcoal canister - fuel tank pipe
- D Fuel tank - activated charcoal canister pipe
- E Fuel filter - fuel tank degassing pipe
- F Fuel filter - fuel tank fuel return flow pipe



**K16**

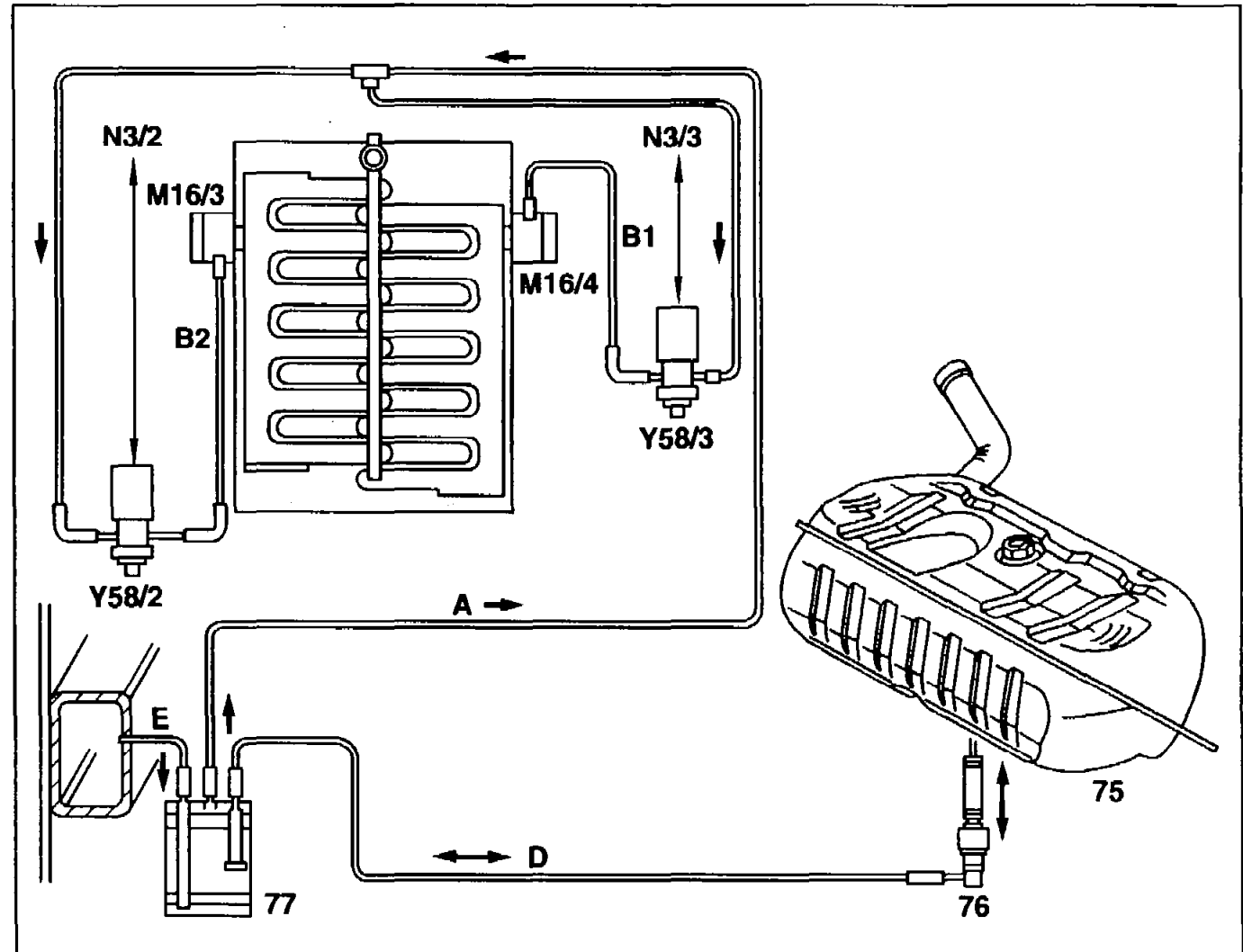
AR47.30-P-8212-01FA

Connection diagram of evaporative
emission control system

Engine 120.980/981

**Connection diagram of LH-SFI evaporative
emission control system model 129, 140
without skibag with engine 120**

- 75 Fuel tank
- 76 Vent valve
- 77 Activated charcoal filter
- 93 Fuel expansion reservoir
- M16/3 Right electronic accelerator
(EA)/cruise control (CC)/idle speed
control (ISC) actuator, positioned on
left of engine
- M16/4 Left electronic accelerator
(EA)/cruise control (CC)/idle speed
control (ISC) actuator, positioned on
right of engine
- N3/2 Left hot wire (LH-SFI) control
module
- N3/3 Right hot wire (LH-SFI) control
module
- Y58/2 Left purge control valve, positioned
in right of engine compartment
- Y58/3 Right purge control valve,
positioned in left of engine
compartment

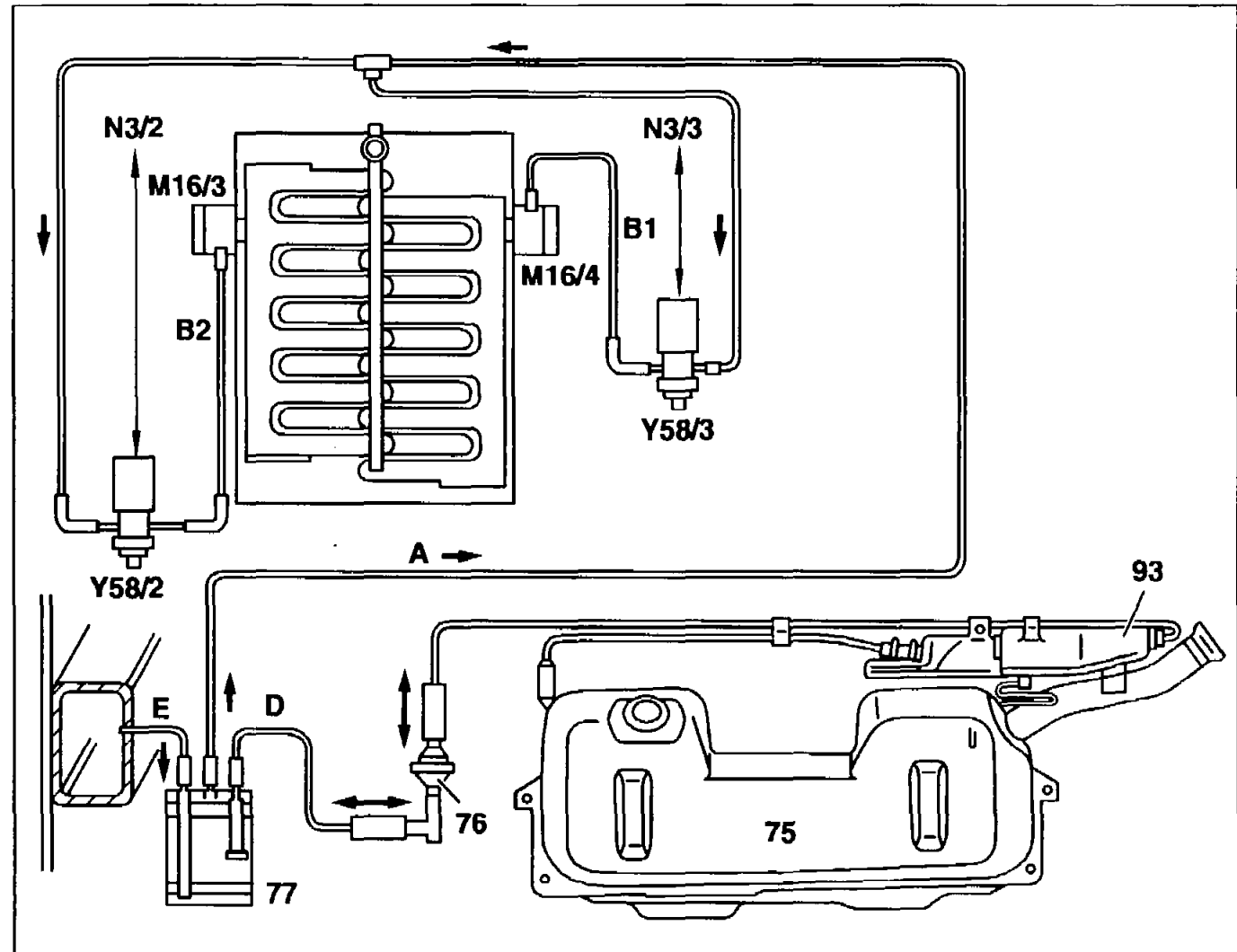




-
- | | | | | | |
|-----------|---|-----------|--|----------|------------------|
| A | <i>Activated charcoal filter – purge control valve pipe</i> | B2 | <i>Purge control valve – actuator (M16/3) pipe</i> | E | <i>Vent pipe</i> |
| B1 | <i>Purge control valve – actuator (M16/4) pipe</i> | D | <i>Vent valve – activated charcoal filter pipe</i> | | |

Connection diagram of LH-SFI evaporative emission control system model 140 with skibag with engine 120

- 75 Fuel tank
- 77 Activated charcoal filter
- 93 Feul expansion reservoir
- M16/3 Right electronic accelerator (EA)/cruise control (CC)/idle speed control (ISC) actuator, positioned on left of engine
- M16/4 Left electronic accelerator (EA)/cruise control (CC)/idle speed control (ISC) actuator, positioned on right of engine
- N3/2 Left hot wire (LH-SFI) control module
- N3/3 Right hot wire (LH-SFI) control module
- Y58/2 Left purge control valve, positioned in right of engine compartment
- Y58/3 Right purge control valve, positioned in left of engine compartment



P47.30-0256-06

- A Activated charcoal filter – purge control valve pipe
- B1 Purge control valve – actuator (M16/4) pipe

- B2 Purge control valve – actuator (M16/3) pipe
- D Vent valve – activated charcoal filter pipe

E Vent pipe

N16

AR47.30-P-8212-01FB

Connection diagram of evaporative
emission control system

Engine 120.982/983

**Connection diagram of ME-SFI evaporative
emission control system model 129, 140
without ski bag with engine 120**

75 Fuel tank

77 Activated charcoal filter

M16/3 Right electronic accelerator
(EA)/cruise control (CC)/idle speed
control (ISC) actuator, positioned on
left of engine

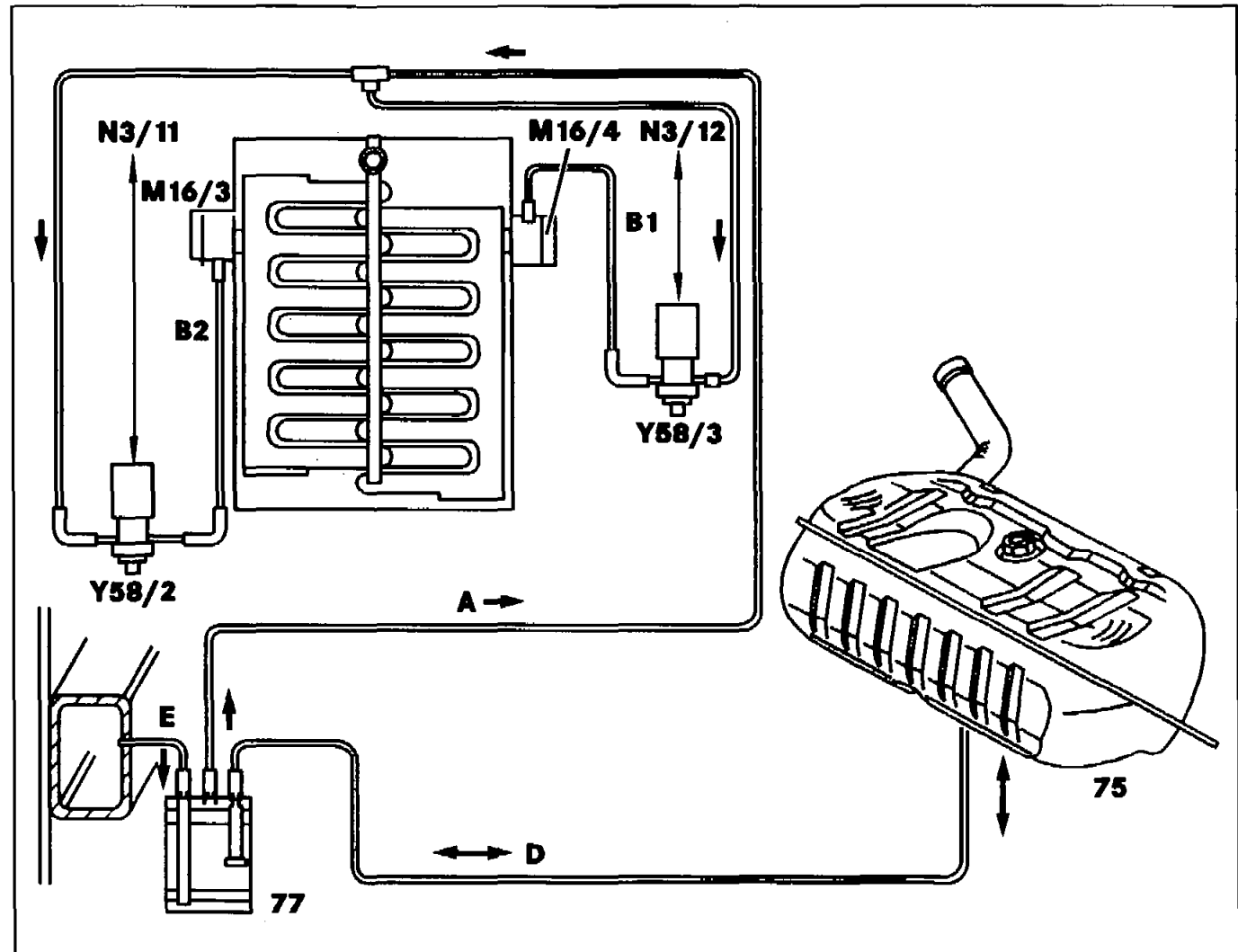
M16/4 Left electronic accelerator
(EA)/cruise control (CC)/idle speed
control (ISC) actuator, positioned on
right of engine

N3/11 Left ME-SFI control module

N3/12 Right ME-SFI control module

Y58/2 Left purge control valve, positioned
in right of engine compartment

Y58/3 Right purge control valve,
positioned in left of engine
compartment

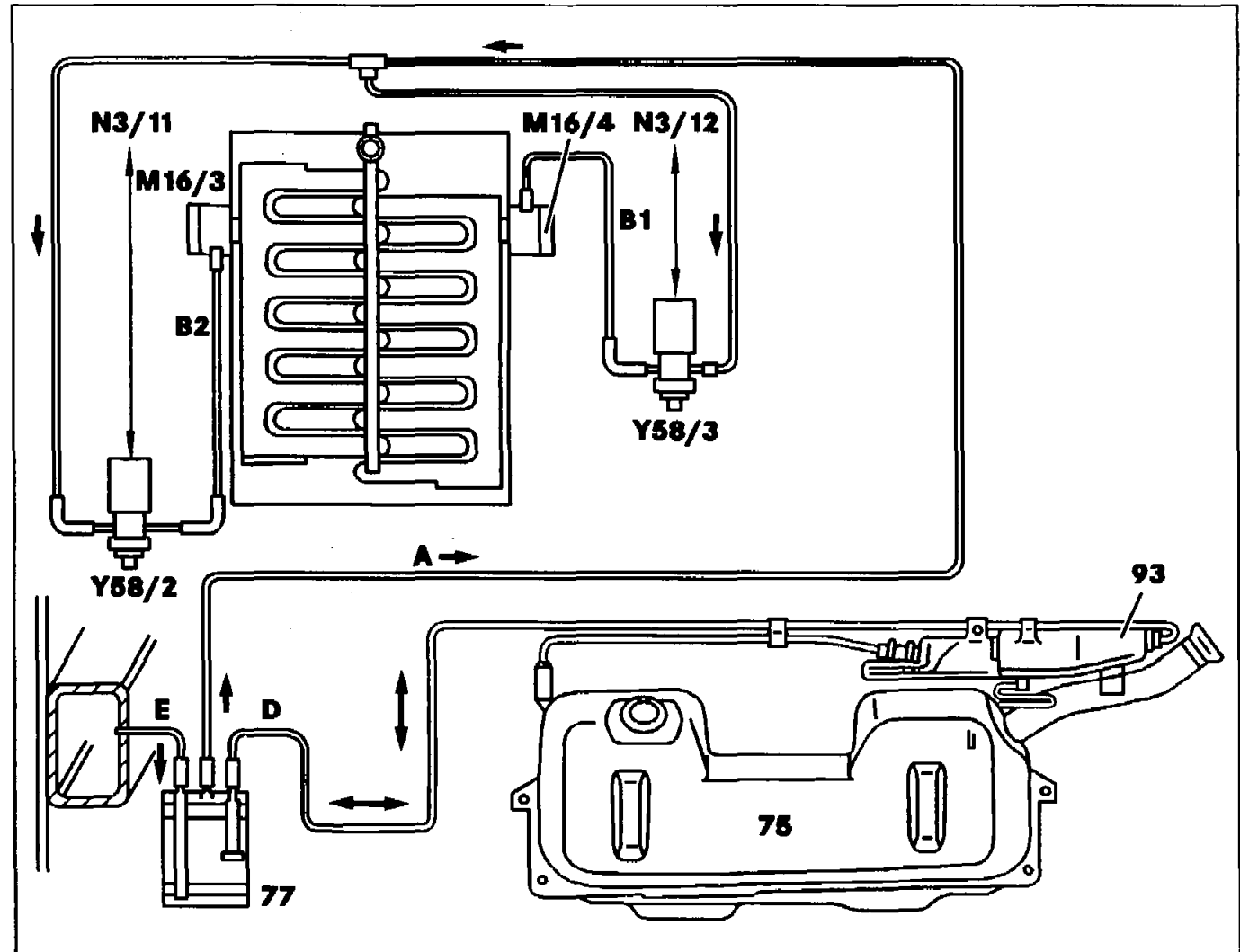




| | | | | | |
|-----------|---|-----------|--|----------|------------------|
| <i>A</i> | <i>Activated charcoal filter – purge control valve pipe</i> | <i>B2</i> | <i>Purge control valve – actuator (M16/3) pipe</i> | <i>E</i> | <i>Vent pipe</i> |
| <i>B1</i> | <i>Purge control valve – actuator (M16/4) pipe</i> | <i>D</i> | <i>Fuel tank – activated charcoal filter pipe</i> | | |

Connection diagram of ME-SFI evaporative emission control system model 140 with ski bag, engine 120

- 75 Fuel tank
- 77 Activated charcoal filter
- 93 Fuel expansion tank
- M16/3 Right electronic accelerator (EA)/cruise control (CC)/idle speed control (ISC) actuator, positioned on left of engine
- M16/4 Left electronic accelerator (EA)/cruise control (CC)/idle speed control (ISC) actuator, positioned on right of engine
- N3/11 Left ME-SFI control module
- N3/12 Right ME-SFI control module
- Y58/2 Left purge control valve, positioned in right of engine compartment
- Y58/3 Right purge control valve, positioned in left of engine compartment





*A Activated charcoal filter – purge
control valve pipe*

*B1 Purge control valve – actuator
(M16/4) pipe*

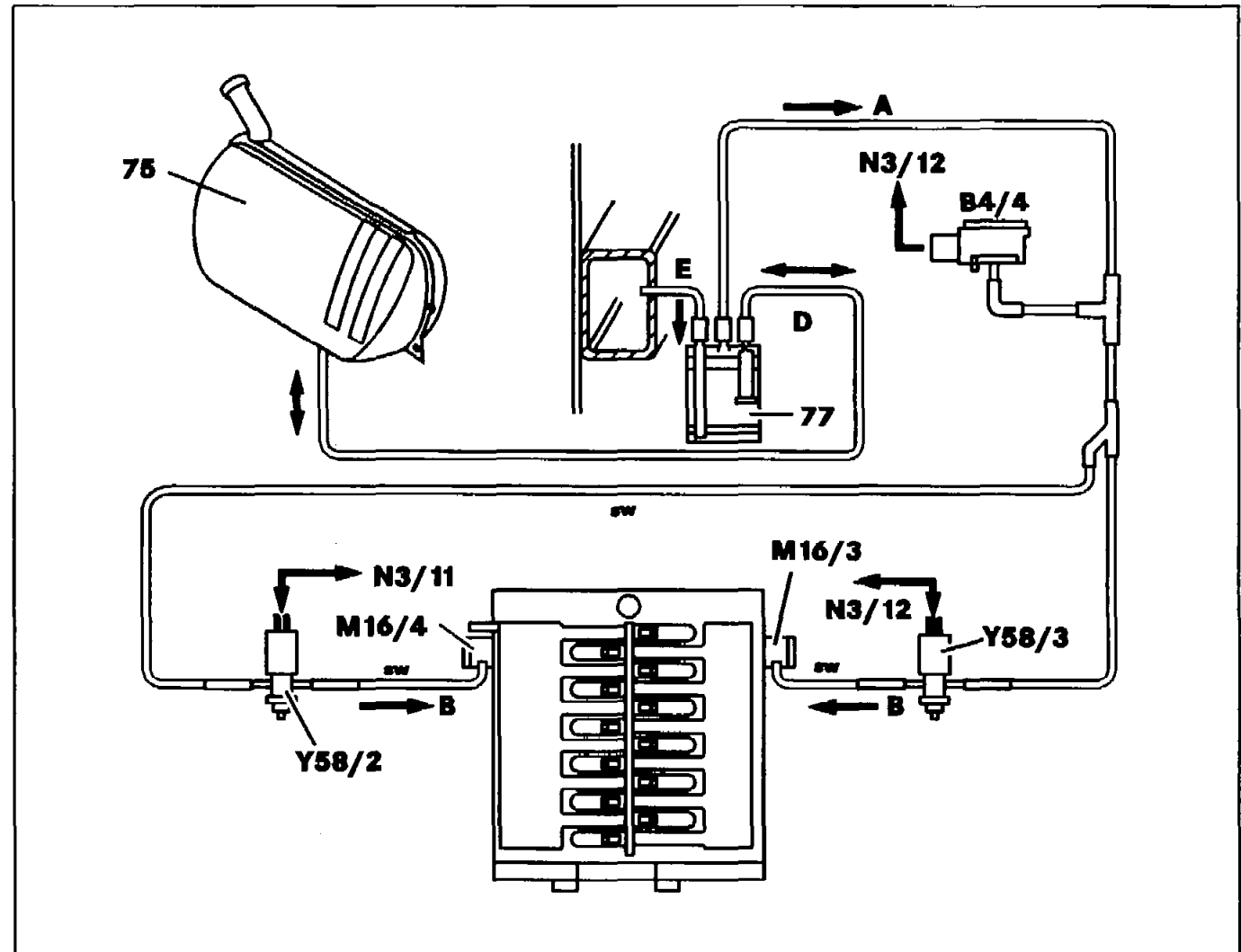
*B2 Purge control valve – actuator
(M16/3) pipe*

*D Fuel expansion tank – activated
charcoal filter pipe*

E Vent pipe

Connection diagram of ME-SFI evaporative emission control system model 129 (USA) with engine 120

- 75 Fuel tank
 77 Activated charcoal filter
 B4/4 Purge monitoring pressure sensor
 M16/3 Right electronic accelerator (EA)/cruise control (CC)/idle speed control (ISC) actuator, positioned on left of engine
 M16/4 Left electronic accelerator (EA)/cruise control (CC)/idle speed control (ISC) actuator, positioned on right of engine
 N3/11 Left ME-SFI control module
 N3/12 Right ME-SFI control module
 Y58/2 Left purge control valve, positioned in right of engine compartment
 Y58/3 Right purge control valve, positioned in left of engine compartment





A *Activated charcoal filter – purge
control valve pipe*

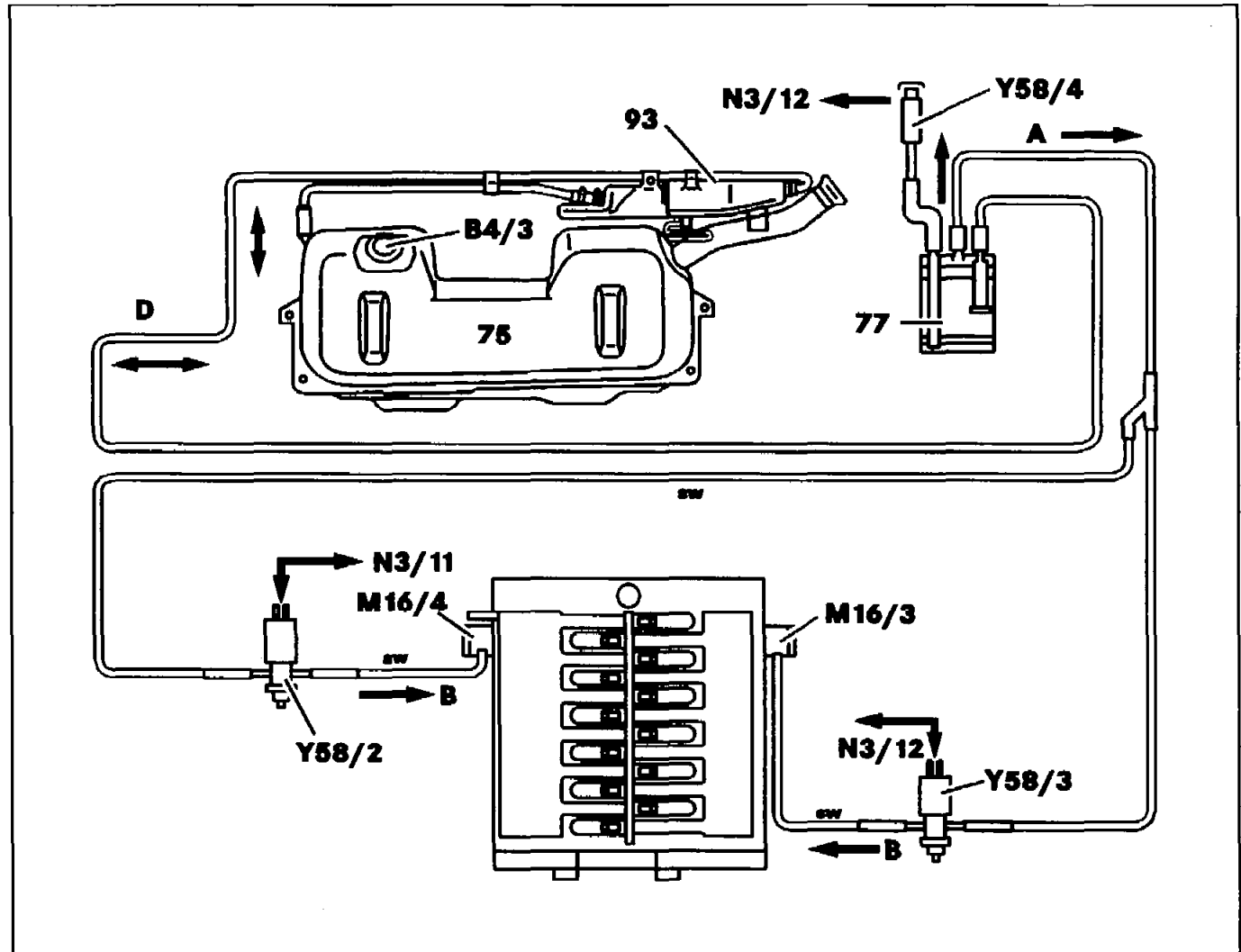
B *Purge control valve – actuator
(M16/3, M16/4) pipe*

D *Fuel tank – activated charcoal filter
pipe*

E *Vent pipe*

Connection diagram of ME-SFI evaporative emission control system model 140 (USA) with engine 120

- 75 Fuel tank
- 77 Activated charcoal filter
- 93 Fuel expansion tank
- B4/3 Fuel pressure sensor
- M16/3 Right electronic accelerator (EA)/cruise control (CC)/idle speed control (ISC) actuator, positioned on left of engine
- M16/4 Left electronic accelerator (EA)/cruise control (CC)/idle speed control (ISC) actuator, positioned on right of engine
- N3/11 Left ME-SFI control module
- N3/12 Right ME-SFI control module
- Y58/2 Left purge control valve, positioned in right of engine compartment
- Y58/3 Right purge control valve, positioned in left of engine compartment
- Y58/4 Activated charcoal filter shut-off valve





A *Activated charcoal filter – purge
control valve pipe*

B *Purge control valve – actuator
(M16/3, M16/4) pipe*

D *Fuel expansion tank – activated
charcoal filter pipe*

**F17**

AR49.10-P-5531-01DA

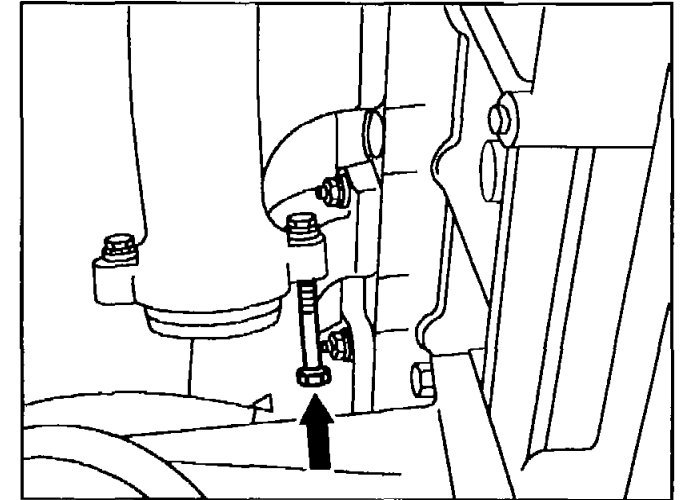
Replacing rivet nuts in exhaust manifold



103 589 01 39 00 Caulking screw

1 Use a suitable bolt (arrow) to knock rivet nuts out of the holes in the exhaust manifold.

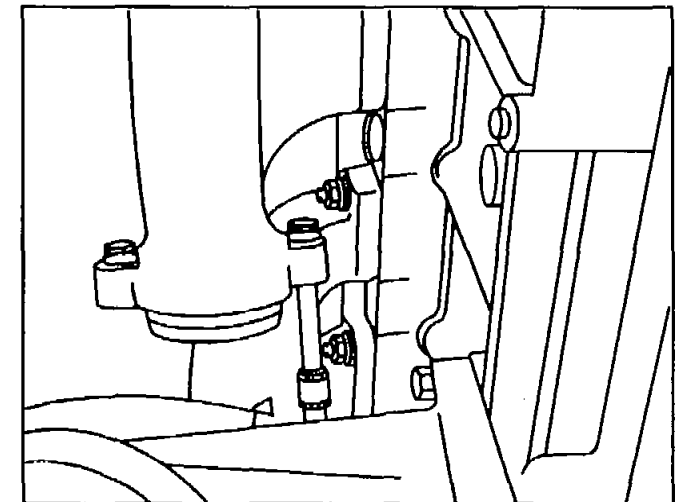
 Screw in bolt by hand only.



P49.10-0209-01

2 Insert new rivet nut into hole of the exhaust manifold.

3 Screw in caulking bolt and tighten to about 30 Nm.



P49.10-0210-01