

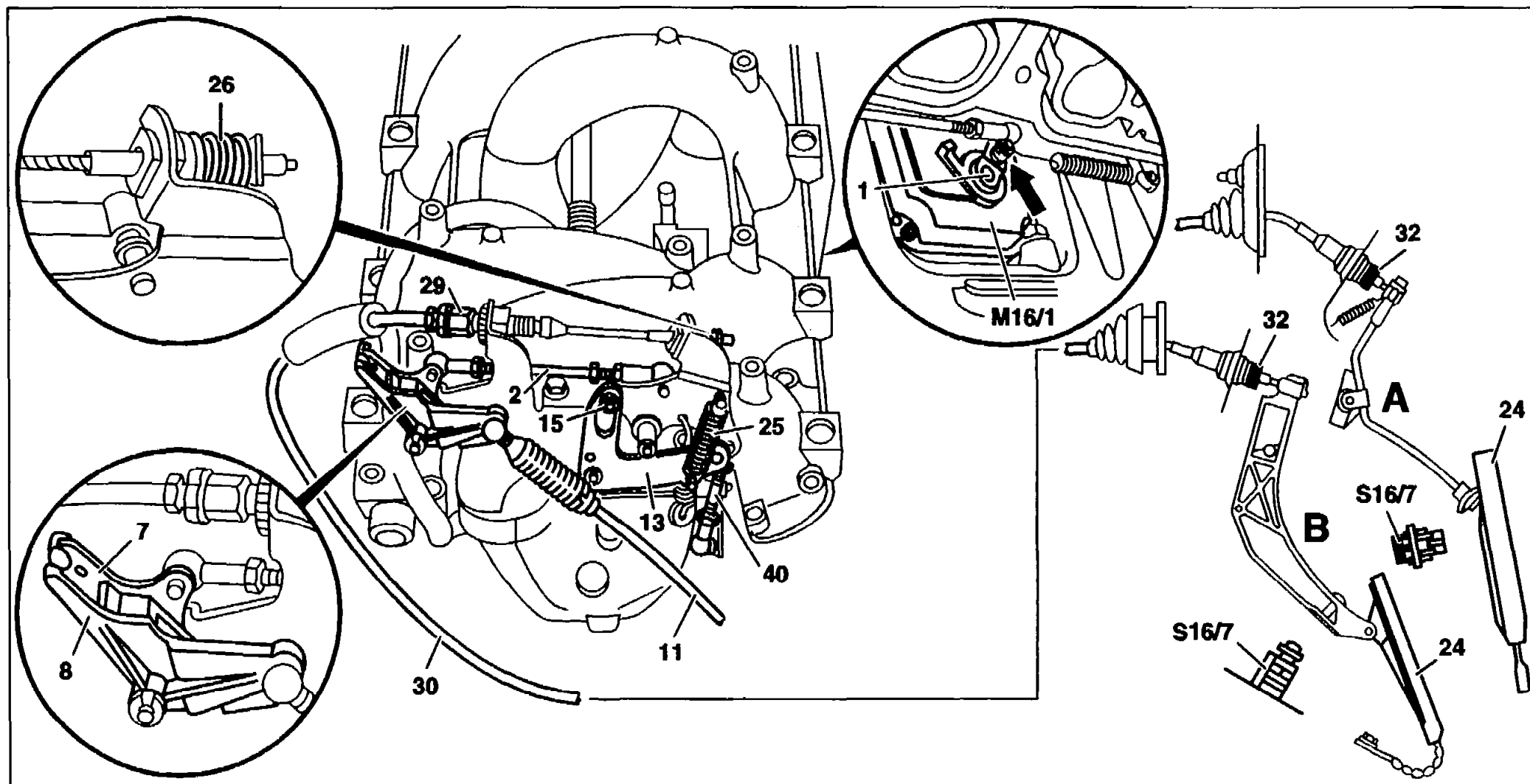


A6



AR30.10-P-1010EB



Adjusting accelerator control


12.8.94

**ENGINE 119.97 except CODE (471a) acceleration slip regulation (ASR)**

<b>A</b>	<b>Model 124</b>	<b>13</b>	<b>Fulcrum lever</b>	<b>32</b>	<b>Adjusting nut</b>
<b>B</b>	<b>Model 129, 140</b>	<b>15</b>	<b>Roller</b>	<b>40</b>	<b>Connecting rod</b>
<b>1</b>	<b>Bell crank</b>	<b>24</b>	<b>Accelerator pedal</b>	<b>S16/7</b>	<b>Kickdown switch</b>
<b>2</b>	<b>Connecting rod</b>	<b>25</b>	<b>Return spring</b>	<b>M16/1</b>	<b>Electronic accelerator (EA) actuator</b>
<b>7</b>	<b>Lever</b>	<b>26</b>	<b>Follower spring</b>	<b>Arrow</b>	<b>Closed throttle stop</b>
<b>8</b>	<b>Bell crank</b>	<b>29</b>	<b>Adjusting screw</b>		
<b>11</b>	<b>Control pressure bowden cable</b>	<b>30</b>	<b>Bowden cable</b>		

	<b>Testing</b>		
	<b>Ignition: OFF</b>		
<b>1</b>	Check to ensure bowden cable (30) and accelerator control rods operate freely and are in proper condition	replace, if necessary	
<b>2</b>	Check bowden cable (30)	Follower spring (26) must be making contact without any play; alter position of adjusting screw (29), if necessary.	
	<b>Setting closed throttle position at engine end</b>		

<p>3</p> <p> BT</p>	<p>Check fulcrum lever (30), adjust</p> <p>Return spring between fulcrum lever and accelerator control lever modified</p>	<p>Roller (15) must be making contact free of stress in the fulcrum lever (13). Adjust fulcrum lever (13), if necessary, with the connecting rod (40, left-, right-hand thread) so that the roller (15) is making contact with the end stop free of stress. Lock nuts at ball sockets.</p>	<p>BE30.10-P-1003-01C</p> <p>BT30.10-P-0002-01A <b>E18</b></p>
<p>3</p>	<p>Detach connecting rod (2) at one end</p>		
<p>4</p>	<p>Check closed throttle stop</p>	<p>Bell crank must be making contact with closed throttle stop (arrow) of electronic accelerator (EA) actuator (M16/1) (stop audible)</p>	
<p>5</p>	<p>Attach connecting rod (2) at one end</p>		
	<p><b>Adjusting control pressure bowden cable (11)</b></p>		
<p>6.1</p> <p> BT</p>	<p>Turn connecting rod (2)</p> <p>Bell crank of right-hand steering/left-hand steering standardized</p>	<p>LHS</p> <p>When the control pressure cable is attached, the tips at the bell crank (8) and lever (7) must be exactly opposite each other. Lock nuts at ball sockets.</p>	<p>BE30.10-P-1001-01C</p> <p>BT30.10-P-0001-01A <b>D18</b></p>

6.2  BT	Turn connecting rod Bell crank of right-hand steering/left-hand steering standardized	RHS	AR30.10-P-1010-01E <b>O16</b> BT30.10-P-0001-01A <b>D18</b>
	<b>Adjusting wide open throttle</b>		
7	When the engine is switched off, depress accelerator pedal (24) from inside the car as far as the stop at kickdown switch (S16/7) (do not operate kickdown switch!).	Bell crank (1) must be making contact with WOT stop of the electronic accelerator actuator (M16/1) (stop audible); alter adjusting nut (29), if necessary.	
	<b>Adjusting closed throttle position at chassis end</b>		
8	Check closed throttle stop	Follower spring (26) must be making contact free of play at the bowden cable; alter adjusting screw (32), if necessary.	
9	Grease bowden cable (30) between end pieces and guide piece with anti-corrosion grease		BR00.45-P-1007-06A

**Test data of accelerator control**

<b>Number</b>	<b>Designation</b>	<b>Engine 119.97</b>
BE30.10-P-1001-01C	Length of connecting rod (LHS) mm	134
BE30.10-P-1002-01C	Length of connecting rod (RHS) mm	66
BE30.10-P-1003-01C	Length of connecting rod to fulcrum lever mm	77

**Repair product**

<b>Number</b>	<b>Designation</b>	<b>Order number</b>
BR00.45-P-1007-06A	Anti-corrosion grease	001 989 37 51 10