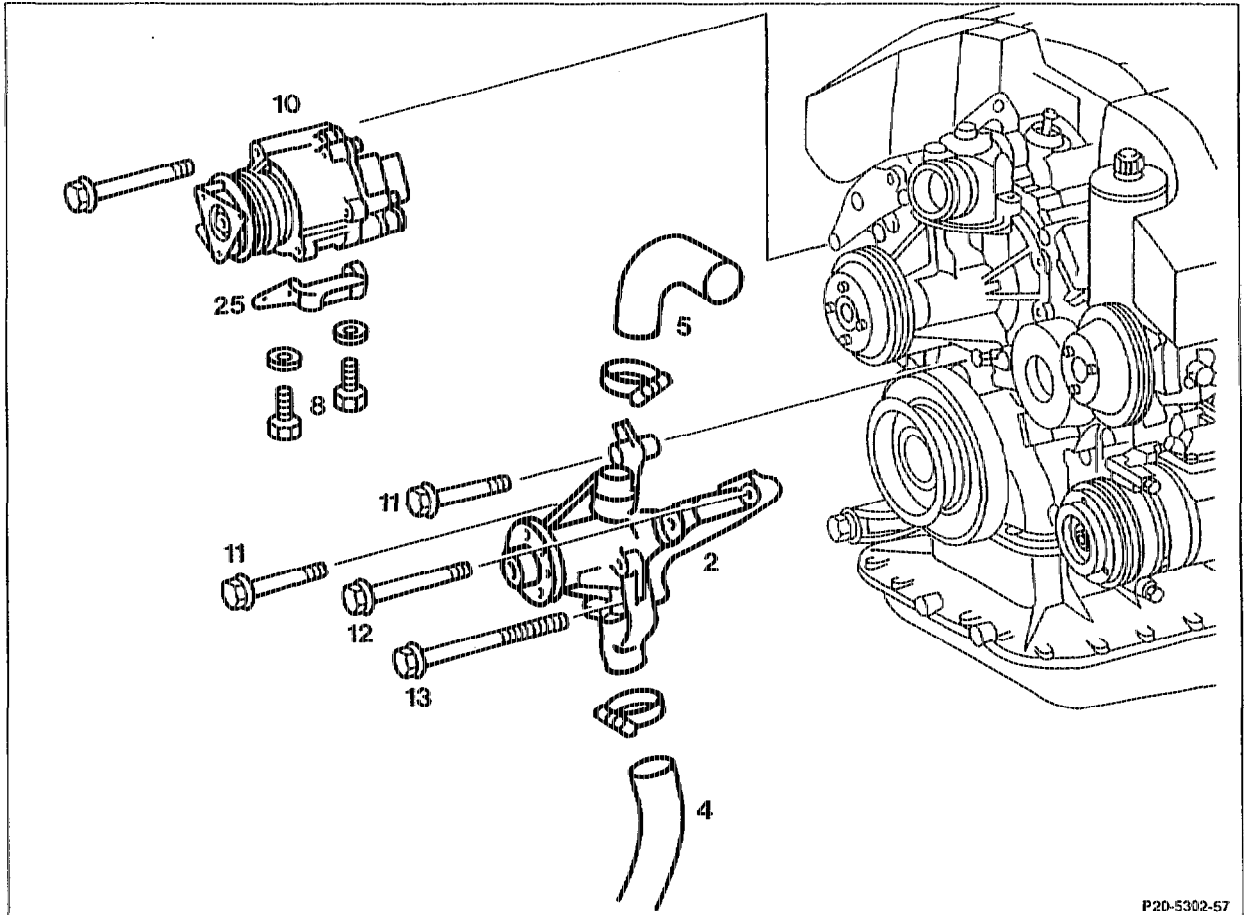


20-3140 Removing and installing bearing bracket of viscous fan clutch

Preceding work:
 Viscous fan clutch removed (20-3120).
 Reservoir with coolant drain line removed (20-2120).
 Alternator removed (15-510).

Operation no. of operation texts and work units or standard texts and flat rates
 20-5996

A. Model 124



P20-5302-57

8 M8 x 45 bolt + washer
 11 M8 x 75 bolt + washer

12 M8 x 90 bolt + washer
 13 M8 x 150 bolt + washer

Coolant at radiator	drain, pour in (20-0100).
Coolant hoses (4) and (5) at fan clutch carrier (2)	detach, fit on.
Air pump (10) with angle bracket (25)	unbolt, place to the side with lines connected, bolt on.

Installation note

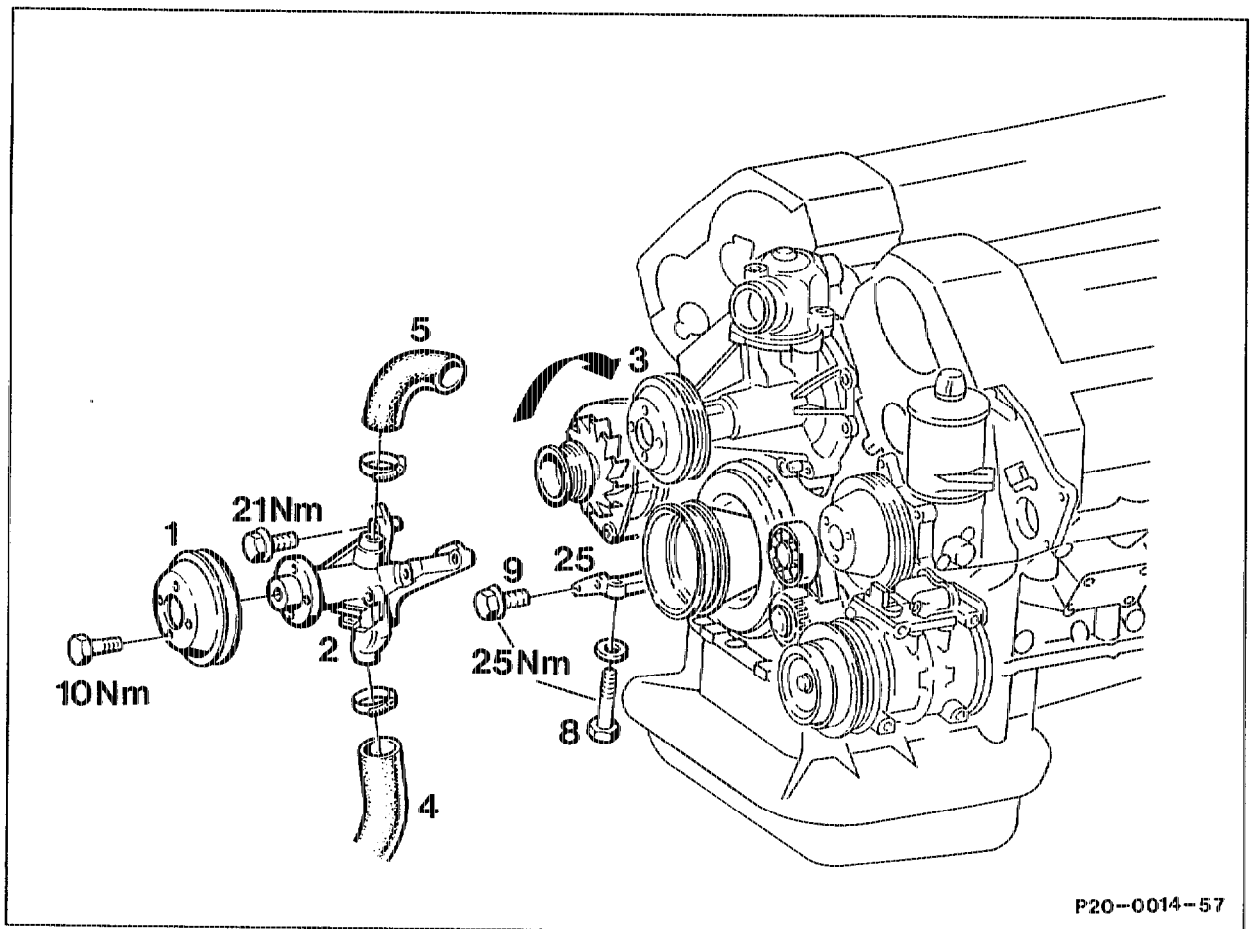
Install air pump (10) with angle bracket (25) to fan clutch carrier (2) free of tension.

Fan clutch carrier (2) to crankcase	unbolt, bolt on (25 Nm).
Cooling system	check for leaks (20-0170).

B. Model 129

Preceding work:
Viscous fan clutch removed (20-3120).

Operation no. of operation texts and work units or standard texts
and flat rates
20-5996

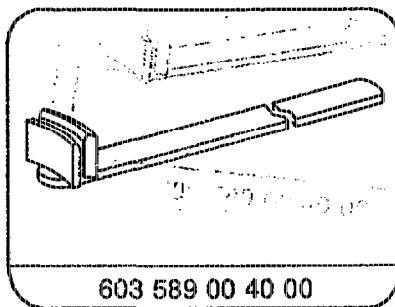
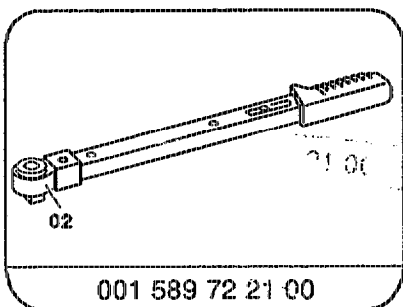


P20-0014-57

Coolant at radiator	drain, pour in (20-0100).
Bolts of belt pulley – fan carrier (1)	slacken, tighten (10 Nm) (step 2).
Poly V-belt	remove, install (13-3420).
Belt pulley – fan carrier (1)	unbolt, bolt on.
Coolant hoses (4) and (5) at fan clutch carrier (2)	slacken, pull off, fit on, tighten.
Alternator (3)	swivel upward (step 6).

Fan clutch carrier (2) at angle bracket (25) and crankcase (7)	unscrew, screw on (25 Nm) (Step 8).
Fan clutch carrier (2)	take off, install.
Bolts (9 and 8) at angle bracket	tighten free of tension (25 Nm).

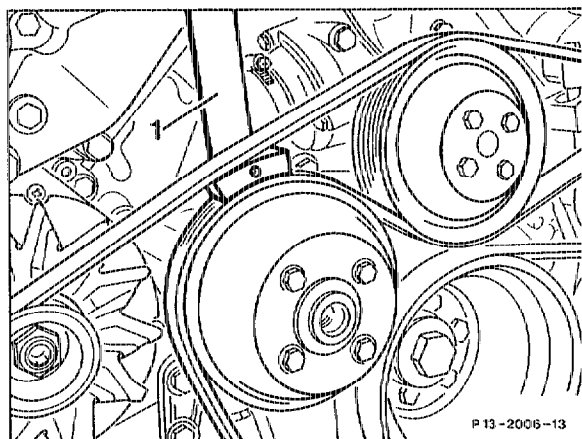
Special tools



Tightening torques in Nm

Bolts of belt pulley	10
Angle bracket	25
Fan clutch carrier	21

- 1 Drain coolant at radiator (20-0100).
- 2 Slacken bolts of belt pulley – fan clutch carrier; counter-hold with tool (1) 603 589 00 40 00 when performing this step.
- 3 Remove poly V-belt (13-3420).



- 4 Unscrew belt pulley on fan clutch carrier.
- 5 Unscrew coolant hoses from fan clutch carrier and detach.
- 6 Swivel alternator up by unscrewing the bottom bolt and slackening the top one.

7 Unscrew bolt, swivel angle bracket to the side and take off fan clutch carrier.

Installation instruction

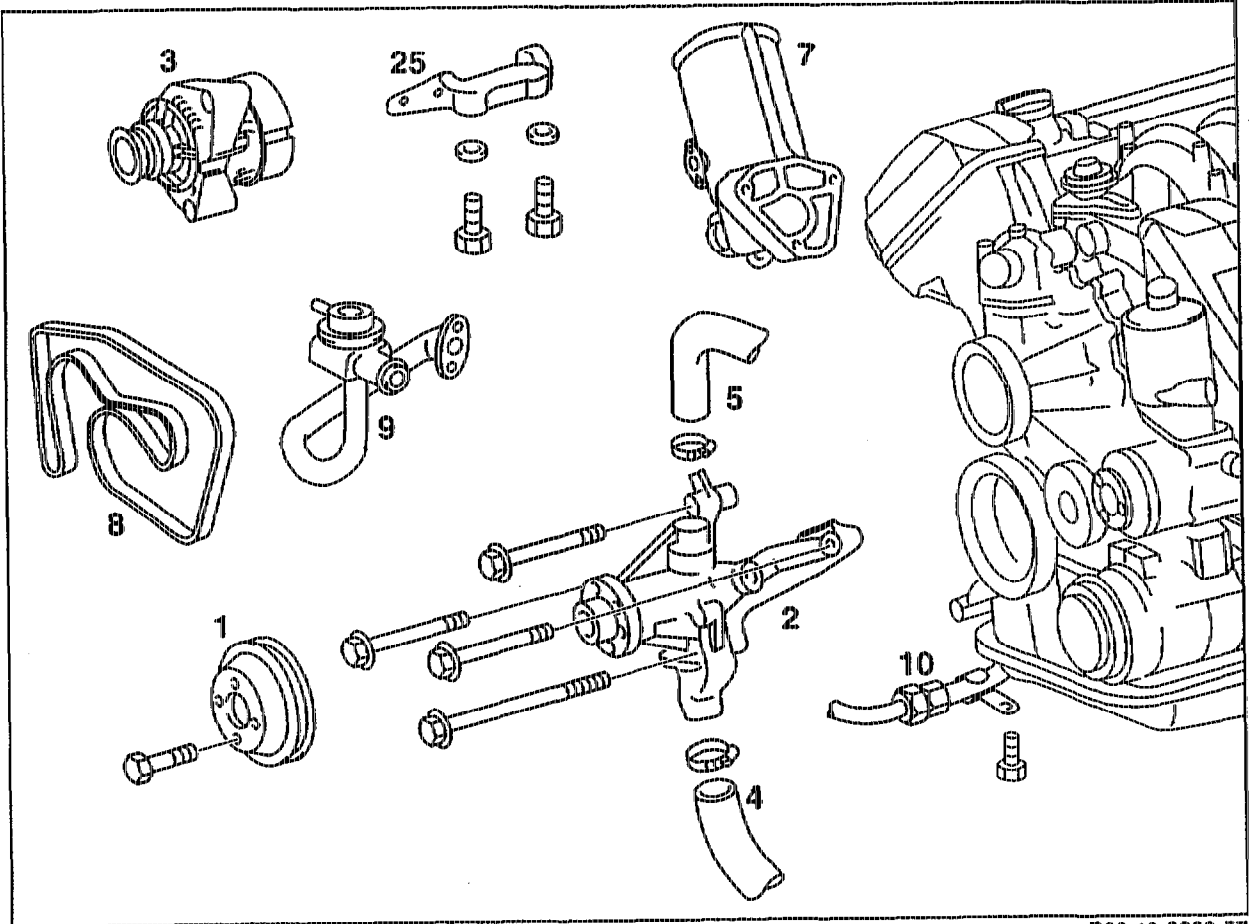
Install angle bracket free of tension.

- 8 Install in the reverse order.

C. Model 210

Preceding work:
Viscous fan coupling removed (20-3120).

Operation no. of operation texts and work units or standard texts
and flat rates
20-5996



P20.40-0229-57

Ground cable	disconnect, connect.
	Installation note
	Code radio.
Coolant and radiator	drain, pour in (20-0100).
Bolts of belt pulley of fan carrier (1)	slacken, tighten (15 Nm)
Poly V-belt (8)	remove, install (13-3420).
Belt pulley of fan carrier (1)	unbolt, bolt on.
Coolant hoses (4) and (5) of fan coupling carrier (2)	slacken, pull off, fit on, tighten.

Front engine mount at front suspension carrier . . .	unbolt, bolt on (22-2110).
Engine	raise to enable generator (3) to be removed.
ATF pipe (10) at front right at oil sump	unbolt, bolt on.
Generator (3)	remove, install.
If secondary air injection fitted: oil filter (7)	remove, install to enable air injection valve (9) to be removed (18-1100).
If secondary air injection fitted: air injection valve (9)	remove, install.
Angle bracket (25)	remove, install.
Installation note	
Install angle bracket (25) to fan coupling support and generator (3) free of stress.	
Fan coupling support (2)	unbolt, bolt on.

Special tools

