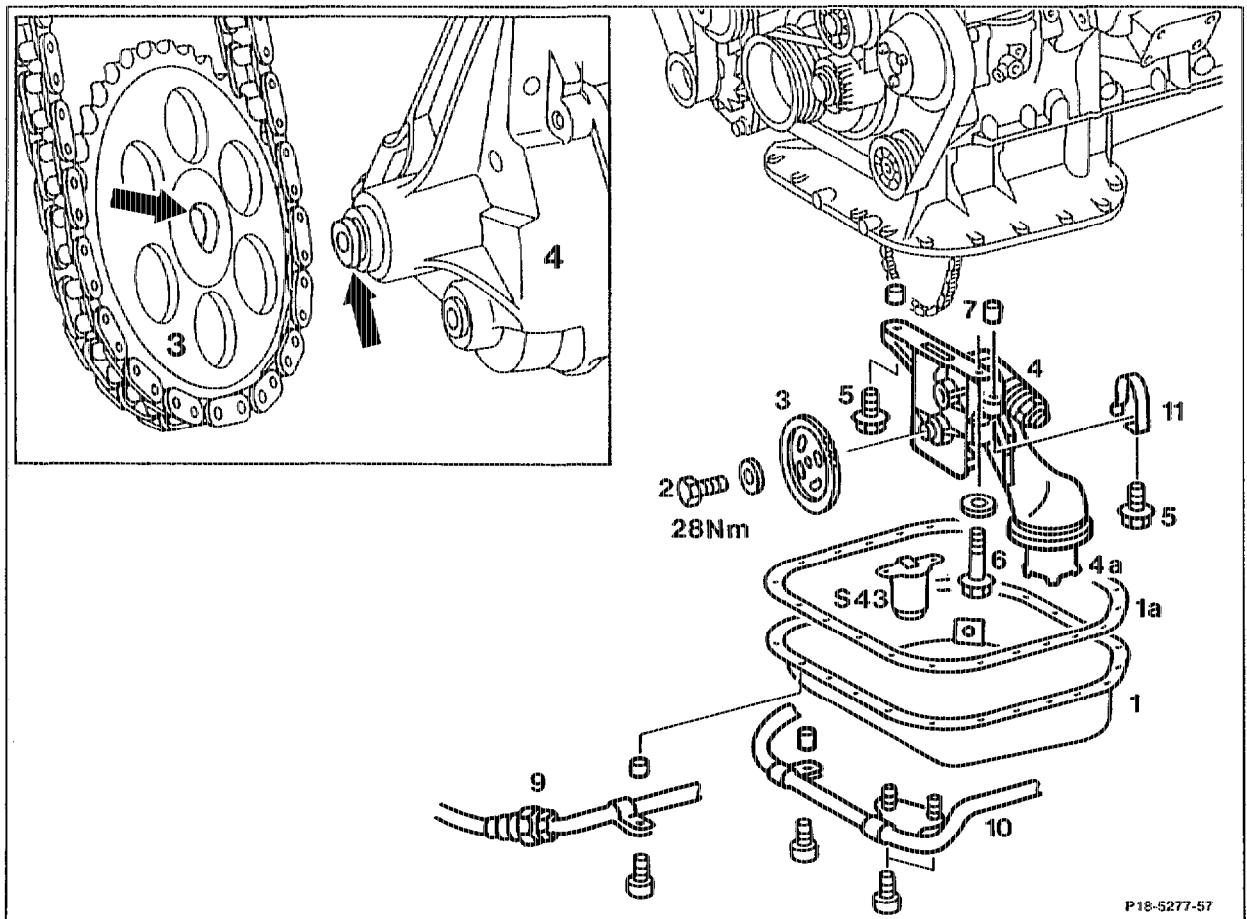


## 18-2100 Removing and installing oil pump

Preceding work:  
 Bottom engine compartment panel removed  
 (Maintenance Manual 6190).  
 Engine oil drained (18-0020).

Operation no. of operation texts and work units or standard texts  
 and flat rates  
 18-6020-6025

### Models 124, 129



2 M8 × 20 bolt with washer  
 5 M8 × 35 bolt + washer

6 M8 × 65 bolt + washer  
 7 Dowel sleeves

Cable straps at bottom part of oil sump .....	detach, attach.
Oil line (9) of automatic transmission at bottom part of oil sump (1) .....	unbolt, bolt on (9 Nm).
If level control fitted: high pressure flexible hose (10) at bottom part of oil sump (1) .....	unbolt, bolt on (9 Nm).
Bottom part of oil sump (1) .....	unbolt, bolt on (9 Nm).
Sealing surfaces .....	clean.
Gasket (1a) .....	replace.

Balancing weight of 1st crankshaft journal . . . . . place horizontally.  
 Oil level sensor (S43) at oil pump (4) . . . . . unbolt, bolt on (18–3300).



Engine 119.97, see 18–3300.

Bolt (2) of oil pump drive gear (3) . . . . . slacken, tighten (28 Nm).  
 Oil pump (4) at timing case cover . . . . . unbolt, bolt on (21 Nm).

**Installation note**

Prevent tensioning spring (11) of tensioning bar from turning by inserting a screwdriver when tightening the bolt (6).

Oil pump (4) . . . . . tilt to the rear, unscrew bolt (2) and take off oil pump drive gear (3) from oil pump (4), fit on.

**Installation note**

Fit on oil pump drive gear (3) with curved side toward oil pump (4) (arrows).

Oil pump (4) . . . . . remove, install.

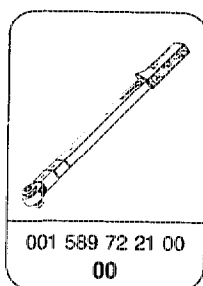
Oil pump (4) . . . . . fill with engine oil before installing.



A newly installed oil pump (4) must be filled with engine oil to ensure it draws in oil after starting.

Balancing weight (4a) . . . . . remove, install, clean strainer.

**Special tool**



**Note**

If the tensioning bar for the drive chain has to be replaced, the timing case cover should be removed (01–2100).