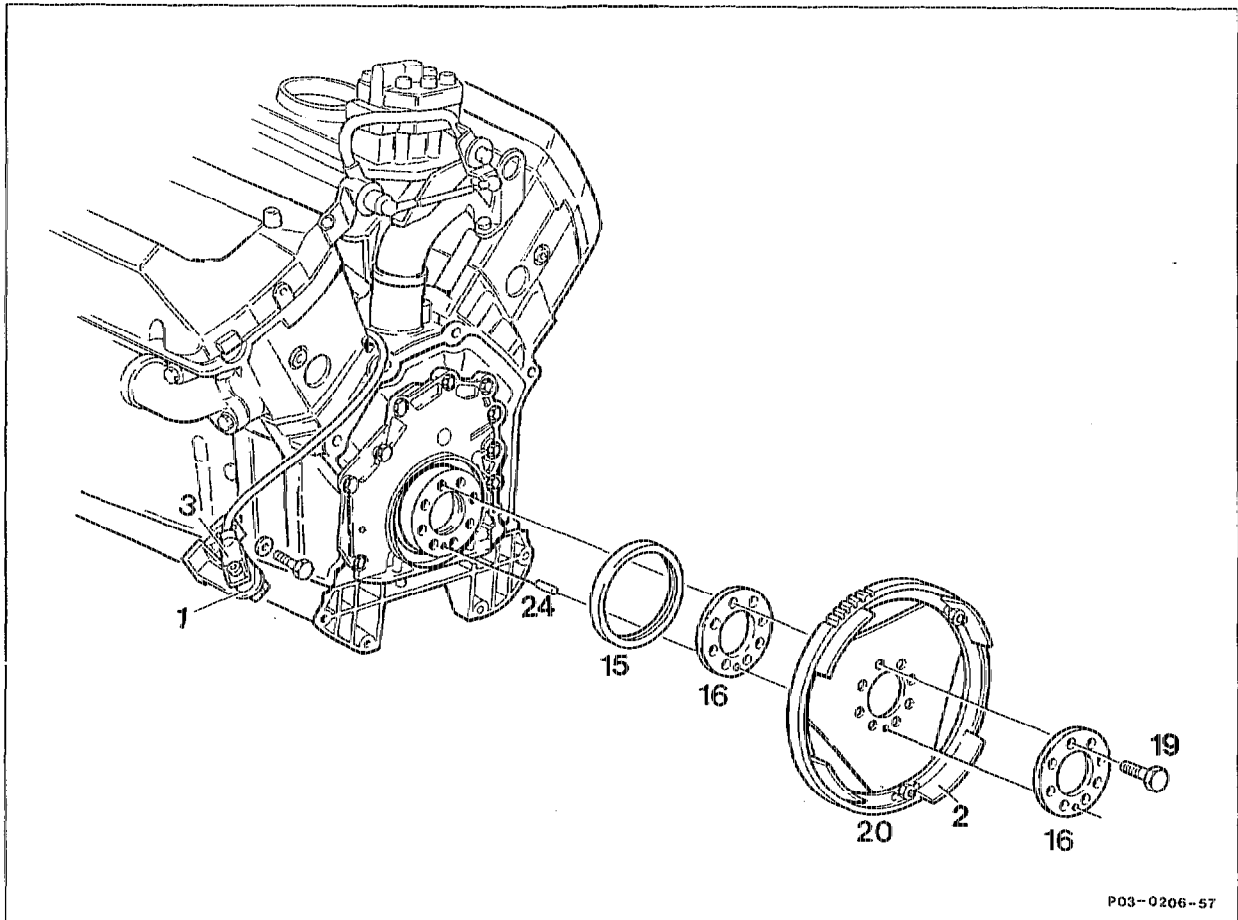


03-3270 Replacing rear crankshaft radial seal

Preceding work:
Transmission removed (27-600).
Driven plates removed (03-4100).

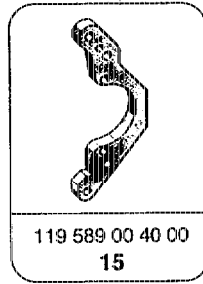
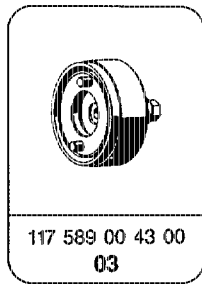
Operation no. of operation texts and work units or standard texts
and flat rates
03-3063 - 03-3301



P03-0206-57

Radial seal (15)	remove (step 1).
Sealing lip of radial seal (15)	oil.
Radial seal (15)	install with insertion tool, special tool 117 589 00 43 00 (steps 3 to 6).
Driven plates (20)	install (03-4100).
Leaks	check at rear of engine when running (01-2240).

Special tools

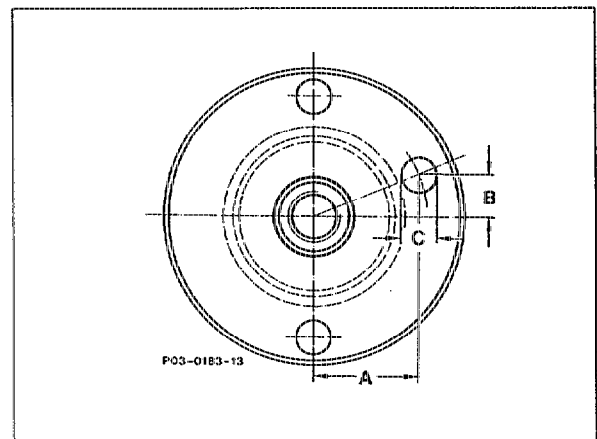


Insertion tool

Use only insertion sleeve 117 589 00 43 00 (2nd version) with hole for locating pin.

Insertion sleeve 117 589 00 43 00 (1st version) can be altered by a hole with the dimensions "A, B, C" as shown in the drawing.

Size A = 38 mm
 B = 15.6 mm
 C = 10 mm

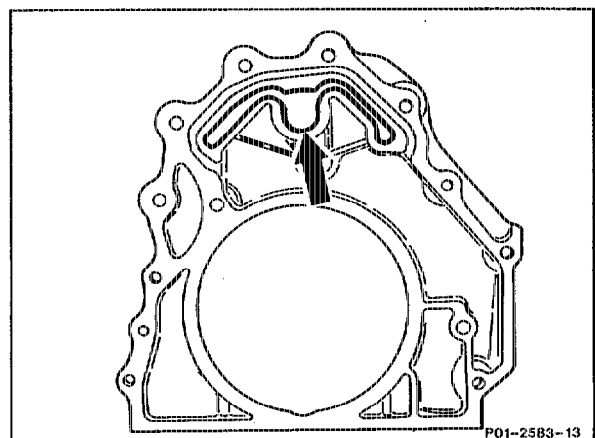


Note

The end cover guides the engine oil from the main oil gallery (arrow) to the two oil passages for the oil supply of the cylinder heads and is sealed with a sealing compound.

For this reason, the radial seal should be replaced if possible without removing the end cover.

If a leak exists at the rear, first of all clean engine and spray dried surrounding area with Mercedes-Benz white contrast spray, Part No. 000 989 03 59. Support engine, run and determine leakage point.

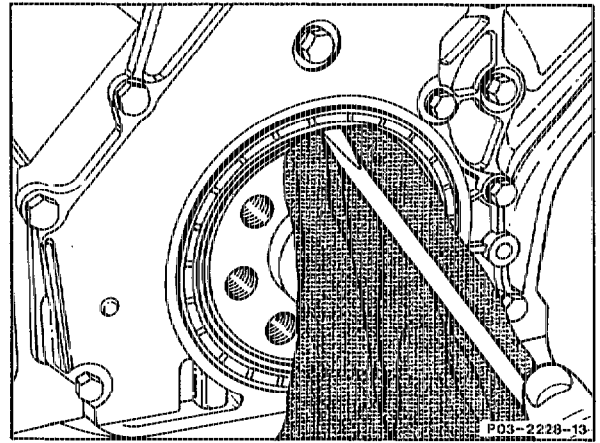


The running surface for the rear radial seal on the crankshaft is hardened and ground without a spiral.

1 Prise out radial seal with a screwdriver.

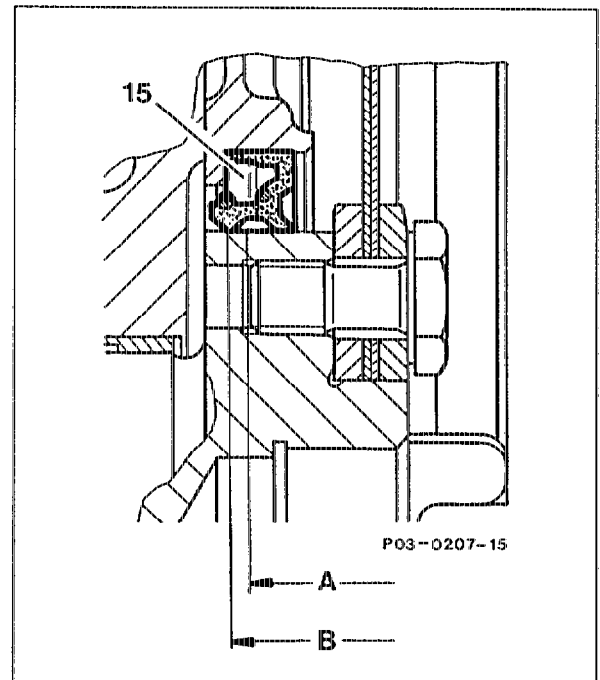


Do not damage crankshaft and mounting hole for the radial seal. Use clean cloth as a base.



2 Examine running surface on crankshaft. If running surface has grooves, install repair size radial seal (15) with sealing lip offset 1.75 mm to inside, and maintain offset repair position of radial seal.

Position of sealing lip
A = radial seal, standard position
B = radial seal, repair position



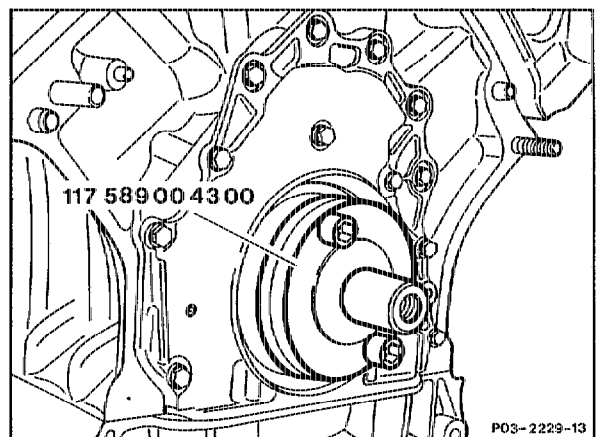
3 Bolt inner part of special tool
117 589 00 43 00 to crankshaft.

4 Coat radial seal between dust lip and sealing lip with engine oil.



Do not use grease! Grease prevents the sealing lip of the radial seal transporting back the engine oil.

5 Push radial seal onto inner part of special tool
117 589 00 43 00.



6 Press radial seal into the end cover with the insertion tool 117 589 00 43 00.

Note

The dust lip must not touch the crankshaft otherwise leaks will occur as a result of the pumping effect.

7 Check rear of engine for leaks with engine running (01-2240).

