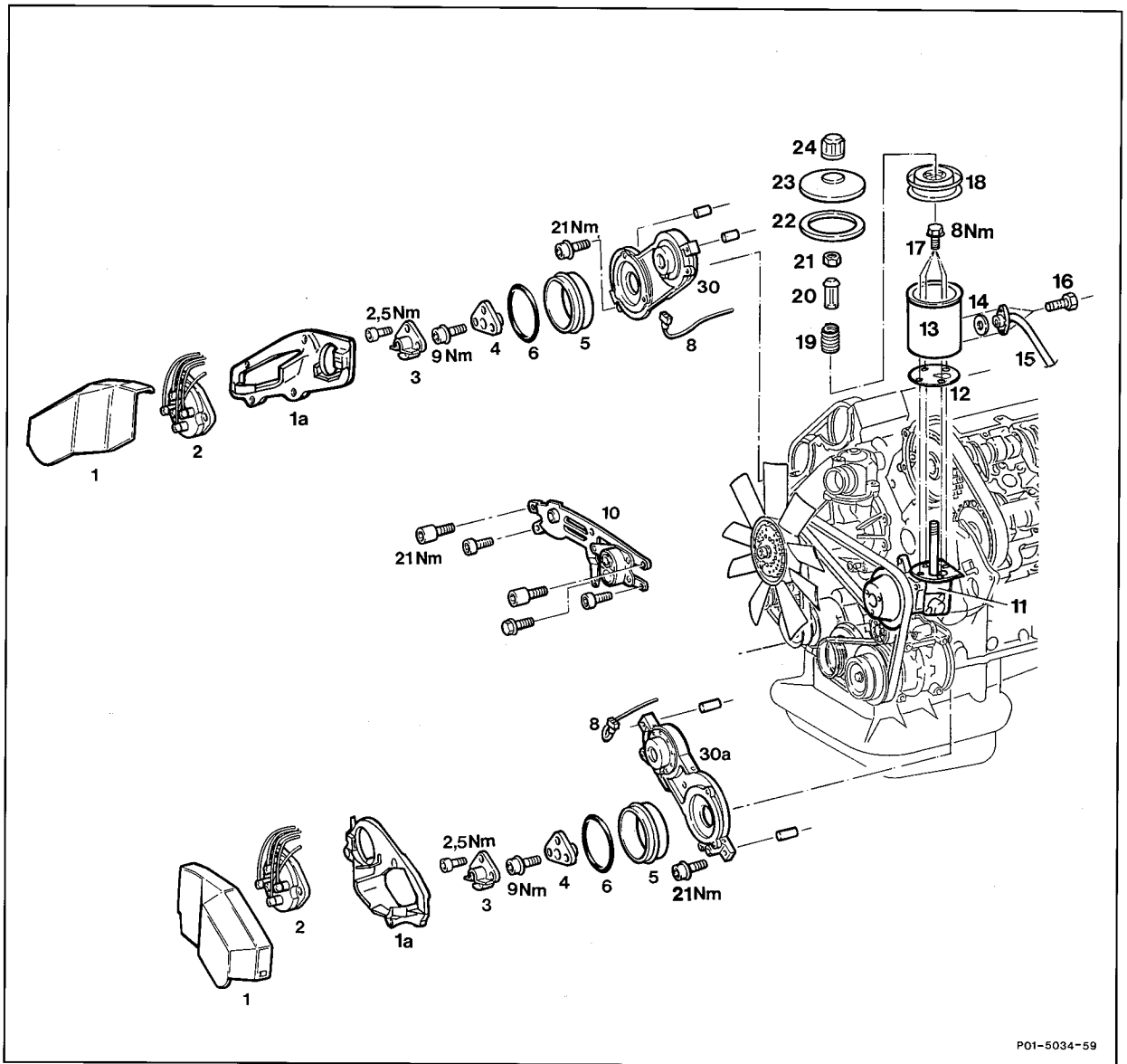


01-2120 Removing and installing front covers at top

Preceding work:
 Hazard warnings when hood opened (01-0080).
 Removing, installing cylinder head covers (01-0500).

Operation no. of operation texts and work units or standard texts
 and flat rates
 01-5700

A. Engine 119.960 in model 129



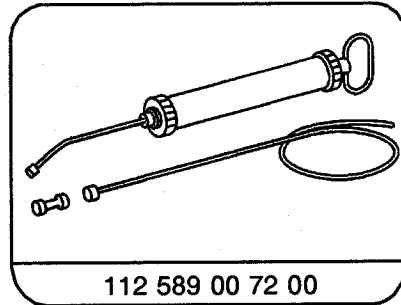
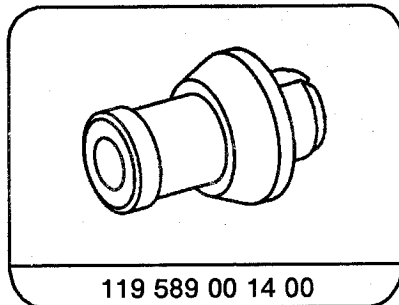
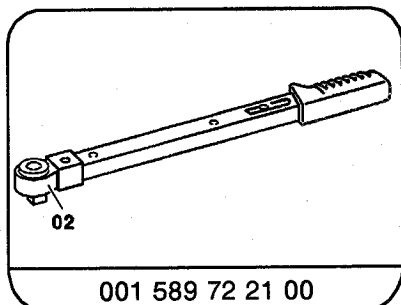
- | | |
|---|----------------------------------|
| Bracket (10) of actuator | detach, attach (21 Nm) (step 1). |
| Shielding caps (1) and high voltage distributor (2) | remove, install. |
| Covers (1a) | remove, install. |

Ignition cable holder, right side	unbolt, bolt on.
Power steering pump (11) (1st version) with mounting plate	remove, install (step 5) (46–710).
Poly V-belt	slacken, tension (13–3420).
Bracket of poly V-belt tensioning device	unbolt, bolt on (21 Nm).
Power steering pump (11) with mounting plate and lines/wiring connected	unbolt, place to the side, bolt on (21 Nm) (step 7) (46–710).
Power steering pump (11) (2nd version) with reservoir (13)	remove, install (step 8).
Power steering pump (11), oil in reservoir (13) . .	extract, adjust oil to correct level (step 9).
Oil line (15) at reservoir (13)	unbolt, bolt on (step 10).
Seal (14)	replace according to condition.
Filter (18)	remove, install.
Reservoir (13)	unbolt, bolt on (8 Nm) (step 12).
Gasket (12)	replace according to condition.
Distributor rotor (3) and follower (4)	remove, install.
Protective cover (5) and seals (6)	take off, fit on.
Connector of solenoid (8) of camshaft adjuster . .	unplug, plug in.
Front covers at top (30), (30a)	remove.
Sealing surfaces	clean.
Sealing surfaces	coat with sealant 002 989 47 20 10.
Front covers (30), (30a)	install with insertion sleeve, special tool 119 589 00 14 00.
Leaks	check with engine running.

Tightening torques in Nm

Cylinder head cover to cylinder head	9
Distributor rotor to follower (reference value)	2.5
Front cover at top to cylinder head	21
Mounting plate of power steering pump	21
Reservoir to power steering pump (Torx)	8

Special tools



Removing, installing

- 1 Unscrew bolts from bracket of actuator.

Installation note

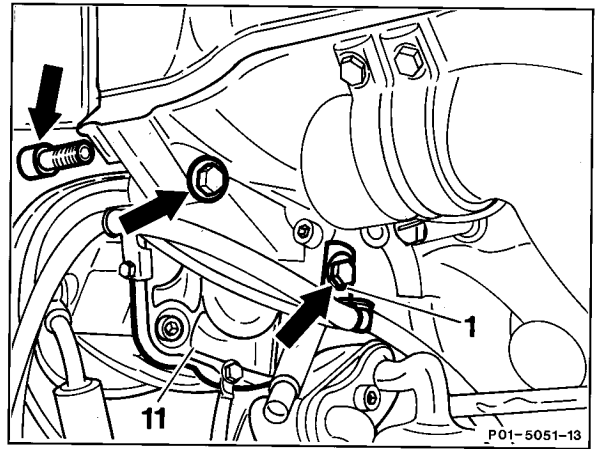
Bolts should be coated with sealant
002 589 47 20 10 when installing.

- 2 Unbolt shielding caps and high voltage distributors and take off.
- 3 Unbolt coverings from front cover.
- 4 Unbolt right ignition cable holder at cylinder head.
- 5 If power steering fitted with non-removable reservoir (1st version) perform steps 8 to 9.
- 6 Slacken poly V-belt (13-3420).

7 Unscrew bolts (arrows). Place mounting plate with power steering pump (11) and lines/wiring connected to the side. Tightening torque 21 Nm.

Installation note

The bolt which is screwed into the cylinder head at the front must be coated with sealant when installed. Pay attention to angle bracket (1) of wiring harness.

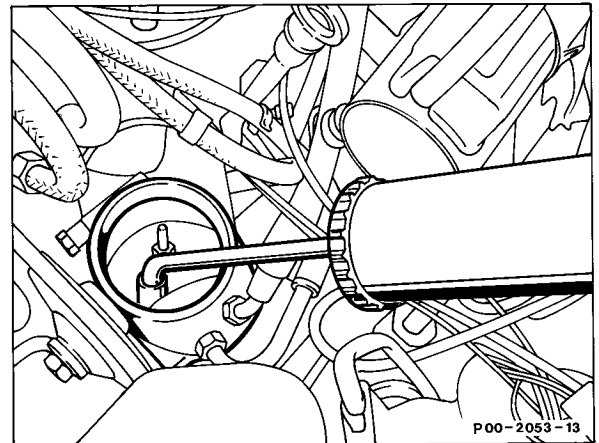


8 If power steering pump with detachable reservoir (2nd version) is fitted perform steps 11 to 14.

9 Extract oil from the reservoir of the power steering pump with the handpump, special tool 112 589 00 72 00 for extracting oil.

Installation note

Fill power steering pump and bleed.



10 Unbolt oil line (15) at reservoir.

Installation note

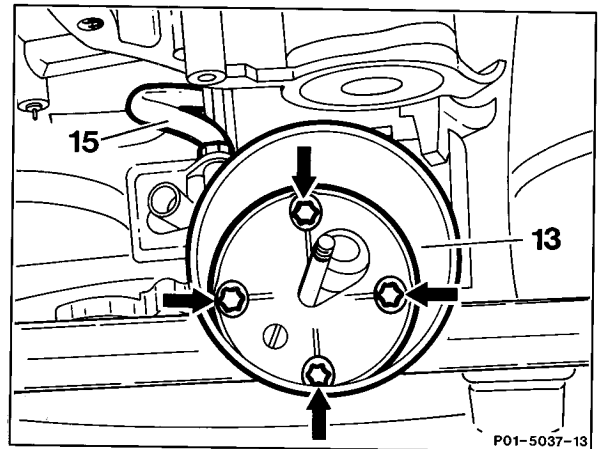
Replace seal according to condition.

11 Remove filter in reservoir of power steering pump.

12 Unscrew bolts (Torx) (arrows). Take off reservoir (13). Tightening torque 8 Nm.

Installation note

Replace gasket of reservoir (13) according to condition.



13 Unbolt distributor rotor and follower.

Installation note

The slot of the follower must engage over the pin in the camshaft.

14 Unplug connector of solenoid of camshaft adjuster.

15 Unscrew bolts of covers at front, take off cover.

16 Clean sealing surfaces.

17 Coat front covers with sealant
002 989 47 20 10.

Fit insertion sleeve, special tool
119 589 00 14 00, onto exhaust camshaft
sprockets and install front covers.

18 Coat front cover bolts with sealant.
Tightening torque 21 Nm.

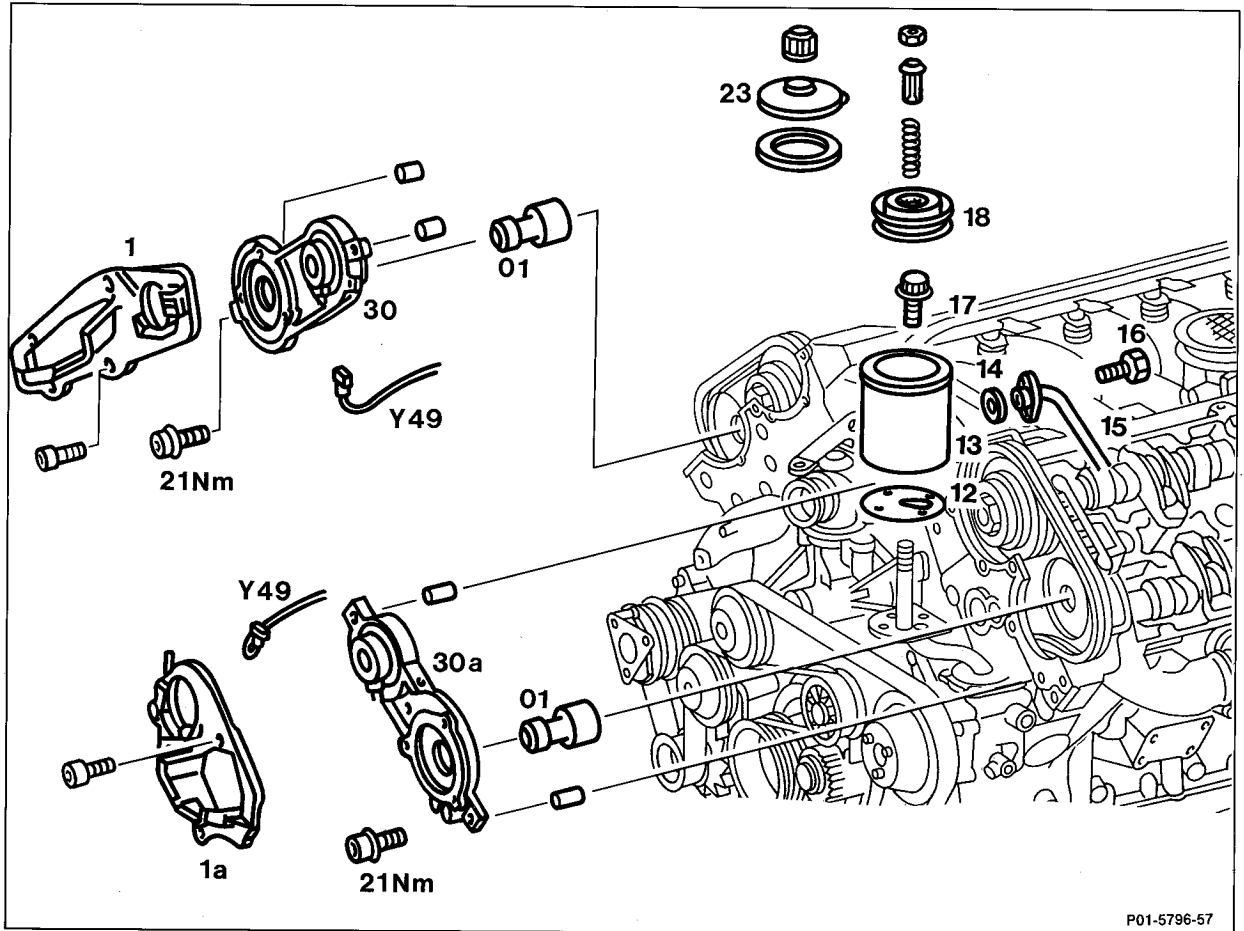
19 Install in reverse order.

20 Run engine, check for leaks.

B. Engine 119.97

Preceding work:
Cylinder head cover removed (01-0500).
Driver removed (01-2130).

Operation no. of operation texts and work units or standard texts
and flat rates
01-5700



P01-5796-57

- | | | |
|--|-------|--|
| Left front cover (30a): cap (23) and filter (18)
at reservoir (13) of power steering pump | | remove, install. |
| Left front cover (30a): oil in reservoir (13) | | extract with handpump, special tool
112 589 00 72 00. |
|
 | | |
| Installation note | | |
| Fill power steering pump and bleed. | | |
| Left front cover: oil line (15) | | unbolt, bolt on. |
|
 | | |
| Installation note | | |
| Replace O-ring (14). | | |
| Left front cover (30a): bolts (17) (Torx E8) | | unscrew, screw on. |

Left front cover (30a): reservoir (13) with gasket (12) remove, install.

Installation note

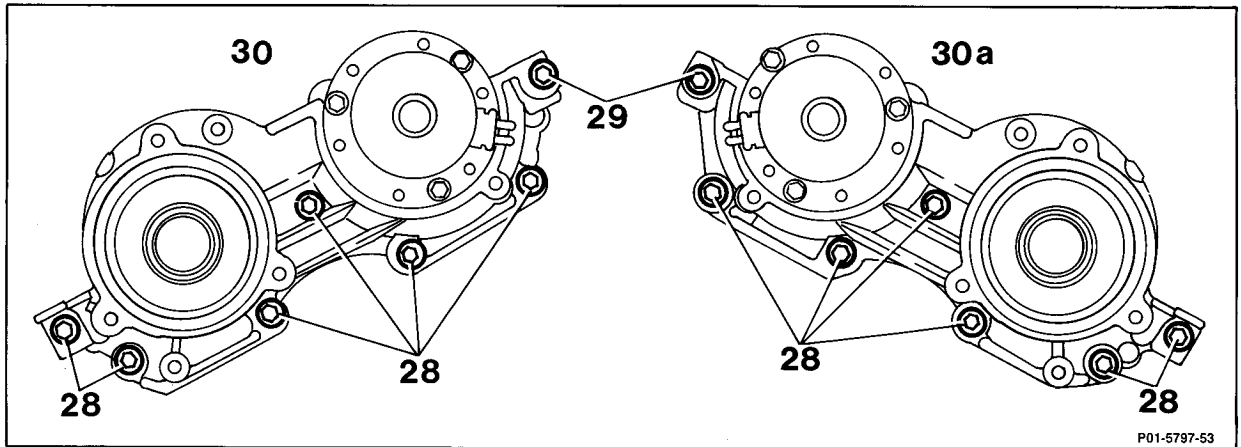
Replace gasket (12) according to condition.

Connector of solenoid (Y49) of camshaft adjuster unplug, plug in.

Bracket of cover (1) or (1a) unbolt, bolt on.

Installation note

Clip ignition cable and ignition cable duct into bracket of cover (1) or (1a).



P01-5797-53

- 28 M8 × 25 hexagon socket bolt + washer
- 29 M8 × 35 hexagon socket bolt + washer

Front covers (30) and (30a) unbolt, remove.

Sealing surfaces clean.

Front covers (30) and (30a) at contact surfaces to cylinder head coat with sealant 002 989 47 20 10.

Bolts (28) and (29) coat with sealant 002 989 47 20 10.

Insertion sleeve (01) fit onto exhaust camshafts, pull off, special tool 119 589 00 14 00.

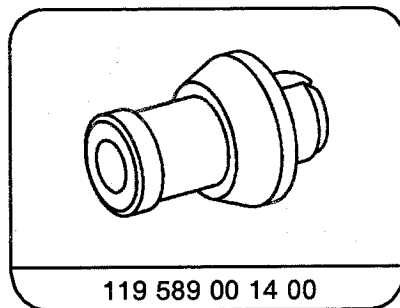
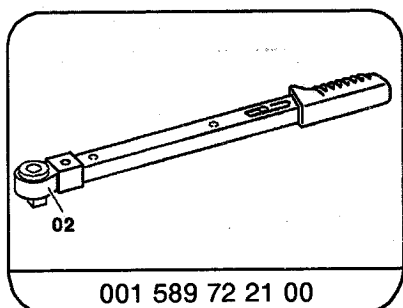
Front covers (30) and (30a) fit on, bolt on (21 Nm).

Leaks check with engine running.

Tightening torques in Nm

Bolts of front covers	25
Reservoir at power steering pump (Torx E8)	9

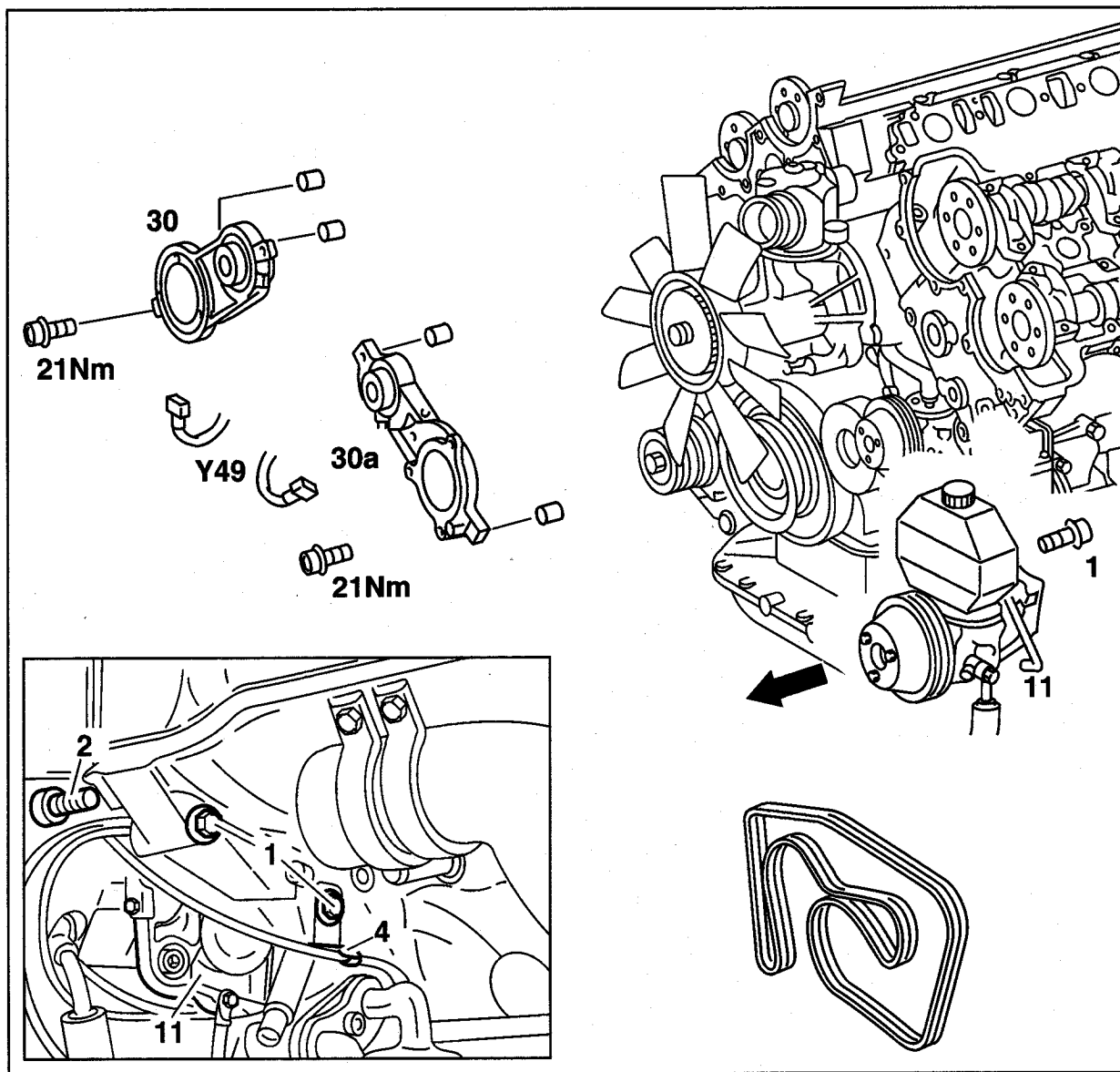
Special tools



C. Engine 119.98 in model 210

Preceding work:
Cylinder head covers removed (01-0500).
Poly V-belt removed (13-3420)

Operation no. of operation texts and work units or standard texts
and flat rates
01-5700



P01.10-0260-59

Left front cover (30a) on version with power steering pump:

unbolt power steering pump with supporting plate (11), bolt on (25 Nm).

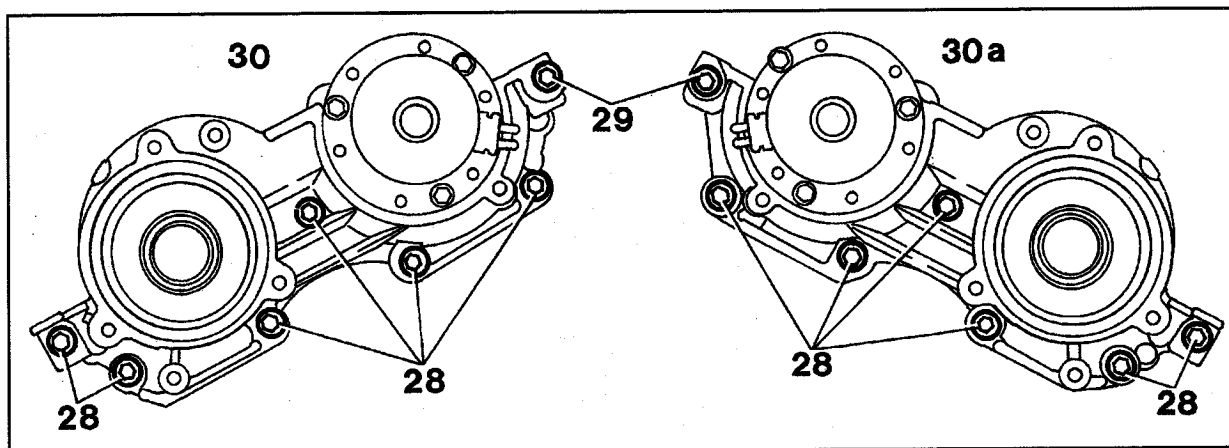
Note

This is done by removing bolt at front (2) and bolts at rear (1).

When installing bolt at front (2), coat with sealant 002 989 47 20 10.

If tandem pump fitted, pump remains installed; unscrew bottom left bolt for front cover with extended hexagon socket bit.

- Right front cover with secondary air injection: . . . unbolt secondary air injection valve at air pump support, push to the side, bolt on.
- Connector of camshaft adjuster solenoid (Y49) . . . unplug, plug in.
- Front cover (30) and (30a) unbolt, remove.



P01-5797-53

- 28 M8 x 25 hexagon socket bolt + washer
 29 M8 x 35 hexagon socket bolt + washer

- Sealing surfaces clean.
- Contact surfaces of front cover (30) and (30a) to cylinder head coat with sealant 002 989 47 20 10.
- Bolts (28) and (29) coat with sealant 002 989 47 20 10.
- Front covers (30) and (30a) fit on, pay attention to dowel pins, screw on (25 Nm).
- Engine rund and check for leaks.

Tightening torques in Nm

Bolts of front covers

25

Special tool

