

01-1000 Notes on crankcase

Operation no. of operation texts and work units or standard texts and flat rates

Identification of model designations

The engine number 1st version is stamped at the rear left in the engine flange, behind cylinder 8.

Engine number 1st version up to January 1991:

119.960 12 up to end of production
119.970 12 000 265
119.971 12 000 531
119.972 12 000 016
119.974 12 000 300

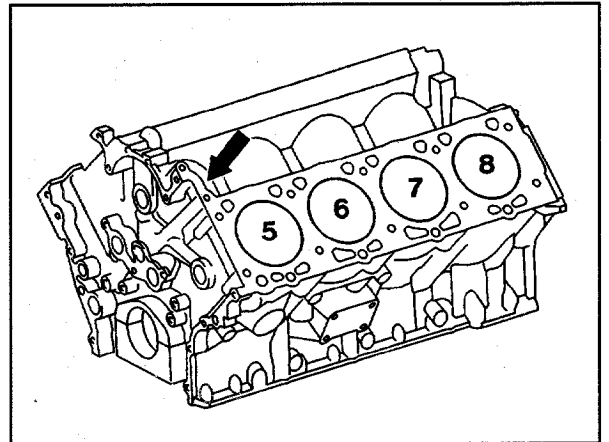
The engine number 2nd version is stamped at the top front left (arrow) in the crankcase.

Engine number 2nd version as of February 1991:

119.970 12 000 266
119.971 12 000 532
119.972 12 000 017
119.974 12 000 301
19.98 as of start of production

Replacement crankcases and short blocks are not stamped with an engine number or engine model designation.

To make it possible to identify the engine installed in a vehicle, the workshop performing repairs has to stamp the engine model designation in the crankcase in the engine number block.

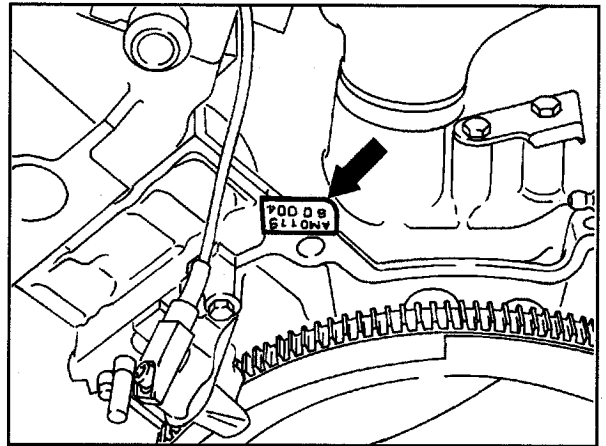


P01-0286-13



Example:

119.974 (engine model designation in model 124.036), see 01-0010 in this connection.



P01-5307-13

The "closed-deck" design of crankcases are fitted from the start of series production with HELI-COIL inserts for the cylinder head bolts.

Standard up to engine:

119.970 12 045 020

119.970 12 045 886 up to 045 892

119.971 12 017 446

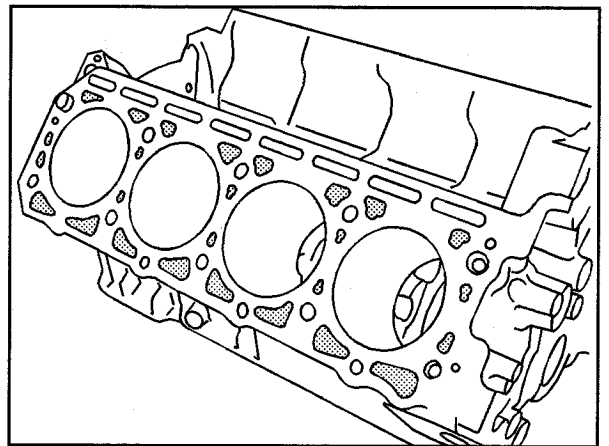
119.972 12 008 660

119.972 12 008 924 up to 008 998

119.974 12 008 760

119.974 12 008 820 up to 008 821

119.975 12 010 515



P01-6006-13

The "open-deck" design of crankcases are installed from the start of series production without HELI-COIL inserts for the cylinder head bolts.

Standard as of engine:

119.970 12 045 021 up to 045 886

119.970 12 045 893

119.971 12 017 447

119.972 12 008 661 up to 008 923

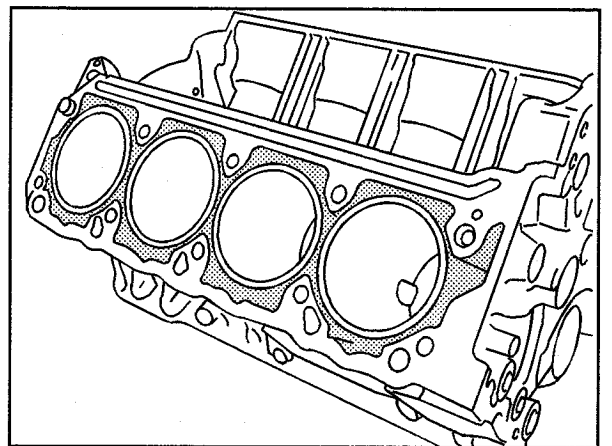
119.972 12 008 999

119.974 12 008 761 up to 008 819

119.974 12 008 822

119.975 12 010 516

The different crankcases can be recognized from the cast number when installed (01-1100).



P01-6005-13

