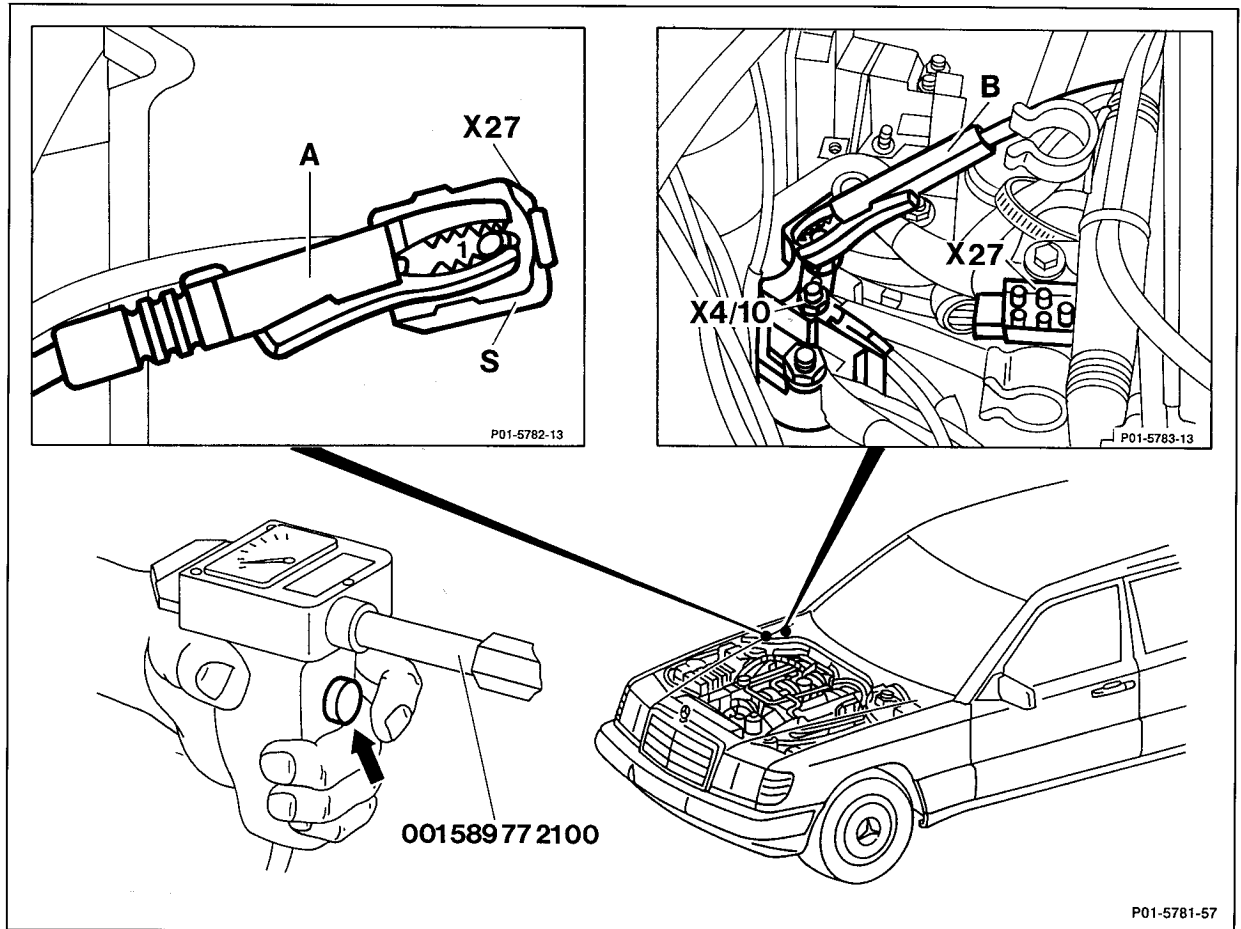


01-0110 Cranking engine with starter

A. Model 124.034

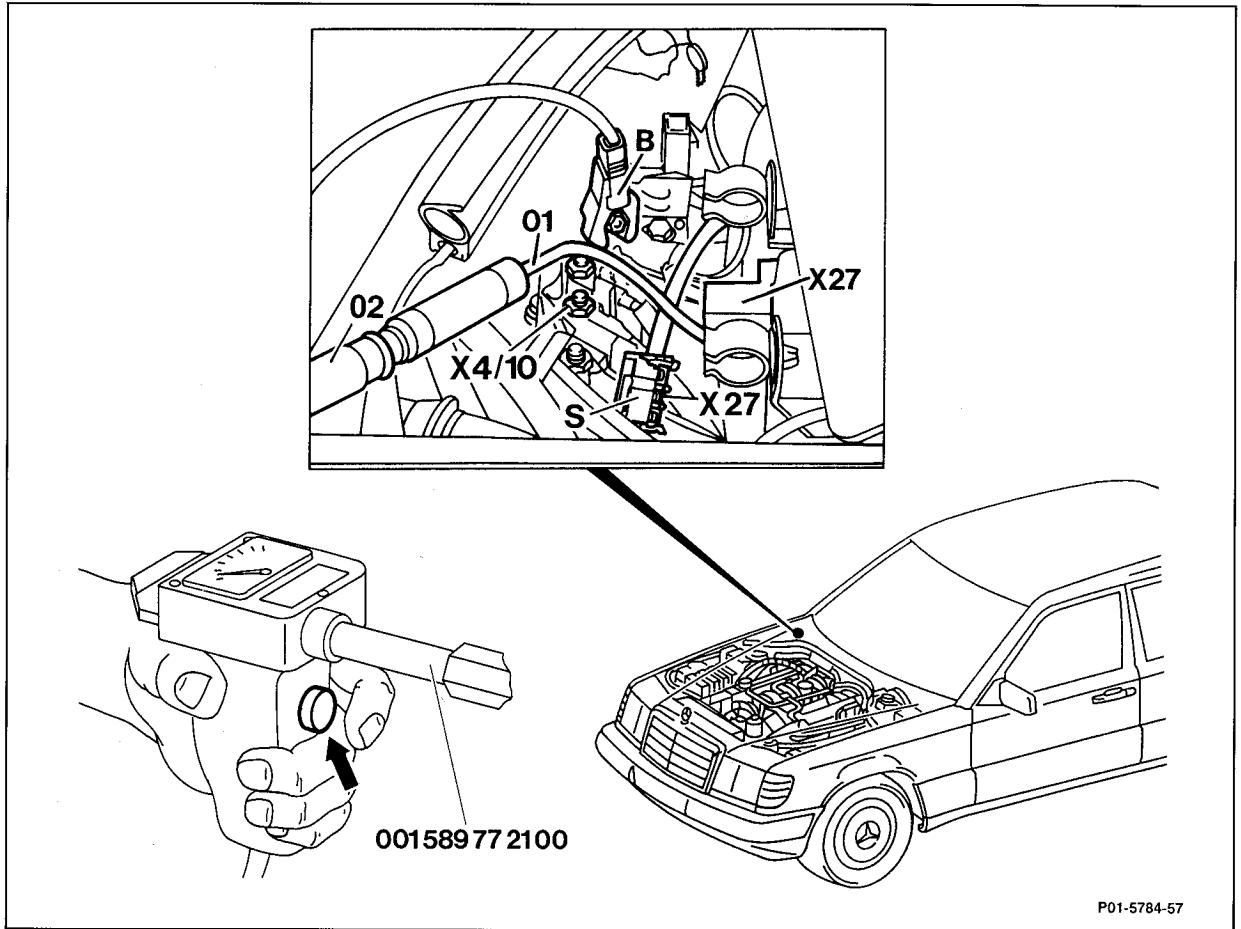


Ignition	switch off.
Cover over engine component compartment	detach, attach.
Cover of terminal block (X4/10)	open, close.
Connector (S) of plug connection (X27)	unplug, plug in.
Crocodile clamp (A) of compression tester at pin 1 of connector	connect, disconnect, special tool 001 589 77 21 00.
Crocodile clamp (B) of compression pressure recorder at the terminal block (X4/10)	connect, disconnect.
Engine	crank in idle speed position and with parking brake applied by pushing contact handle (arrow) on compression tester.



Do not crank engine using ignition starter switch.

B. Model 124.036

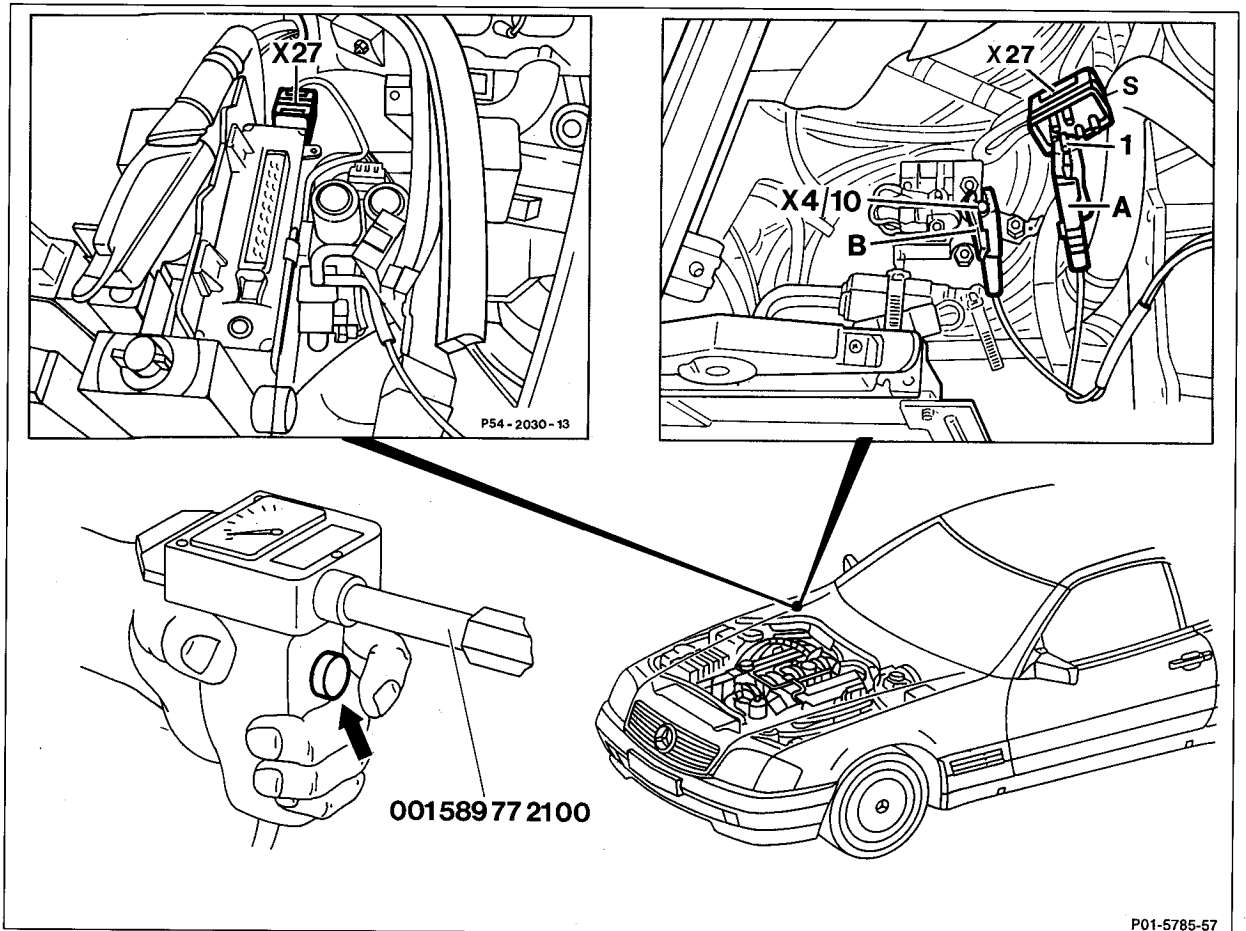


- | | |
|---|--|
| Ignition | switch off. |
| Cover over engine component compartment | take off, install. |
| Cover of terminal block (X4/10) | open, close. |
| Connector (S) of plug connection (X27) | unplug, plug in. |
| Adaptor cable (01) with plug connection (X27) . . . | connect, separate,
special tool 124 589 36 63 00. |
| Adaptor cable (01) with cable (02) of
compression tester | connect, separate,
special tool 001 589 77 21 00. |
| Crocodile clamp (B) of compression tester) | connect to terminal block (X4/10, disconnect. |
| Engine | crank in idle speed position and with parking
brake applied by pushing contact handle (arrow)
at the compression tester. |



Do not crank engine using ignition starter switch.

C. Model 129 with engine 119.960

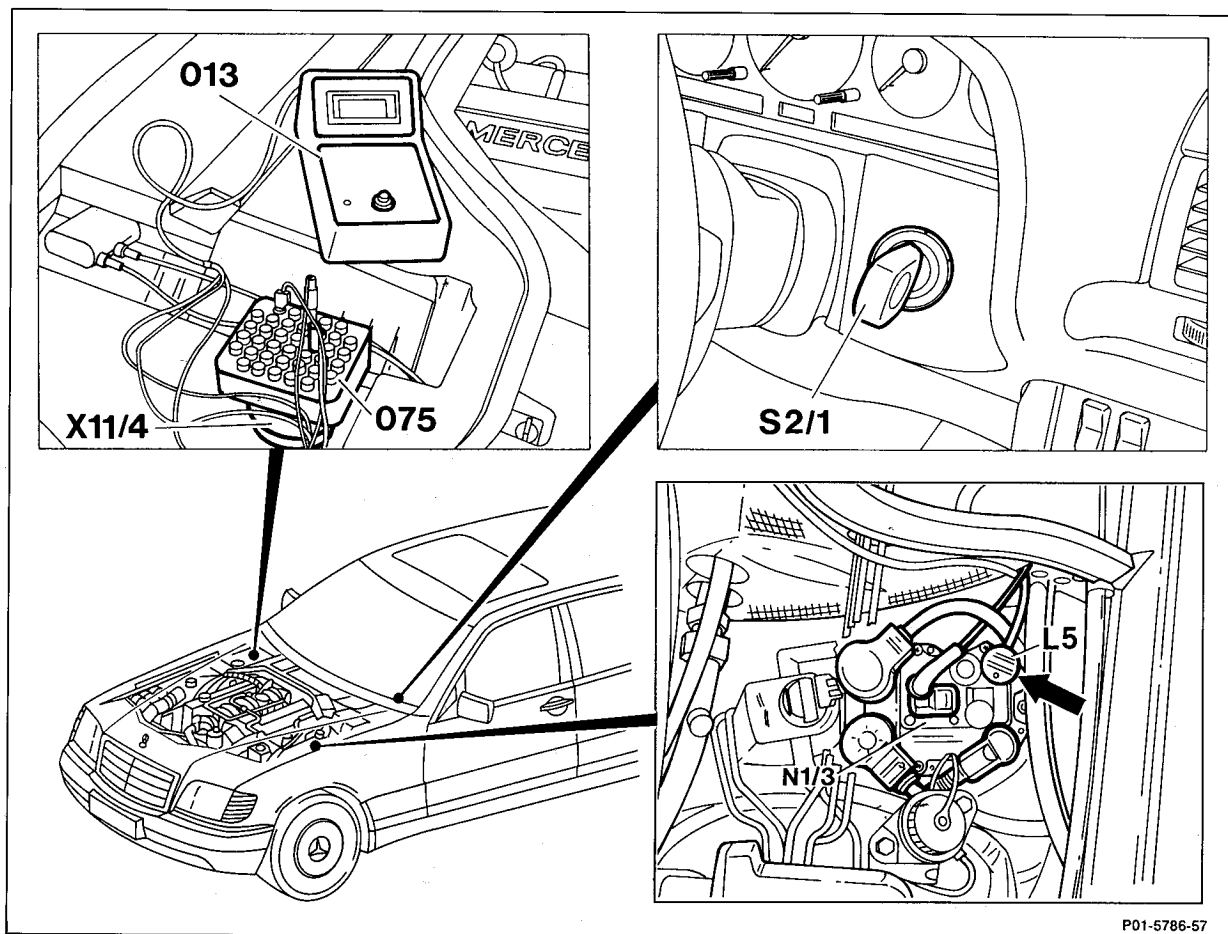


Ignition	switch off.
Cover over component compartment	remove, install.
Connector of plug connection (X27)	unplug, plug in.
Crocodile clamp (A) of compression tester	connect at pin 1 of connector (S), disconnect, special tool 001 589 77 21 00.
Cover of terminal block (X4/10)	open, close.
Crocodile clamp (B) of compression	connect tester to terminal block (X4/10), disconnect.
Engine	crank in idle speed position and with parking brake applied by pushing contact handle (arrow) on compression tester.



Do not crank engine using ignition starter switch.

D. Typ 140



P01-5786-57

- 013 Pulse counter
- 075 Pulse counter adaptor
- X11/4 Test coupling for diagnosis (38-pin)

Left cover over EZL ignition control unit	take off, fit on.
Crankshaft position sensor (L5) at EZL ignition control unit (N1/3)	unplug, plug in.
Engine	crank in idle speed position and with parking brake applied using ignition starter switch (S2/1).
EZL ignition control unit (N1/3) fault memory	read, erase (see Diagnosis Manual Engine Volume 2, Index 0).

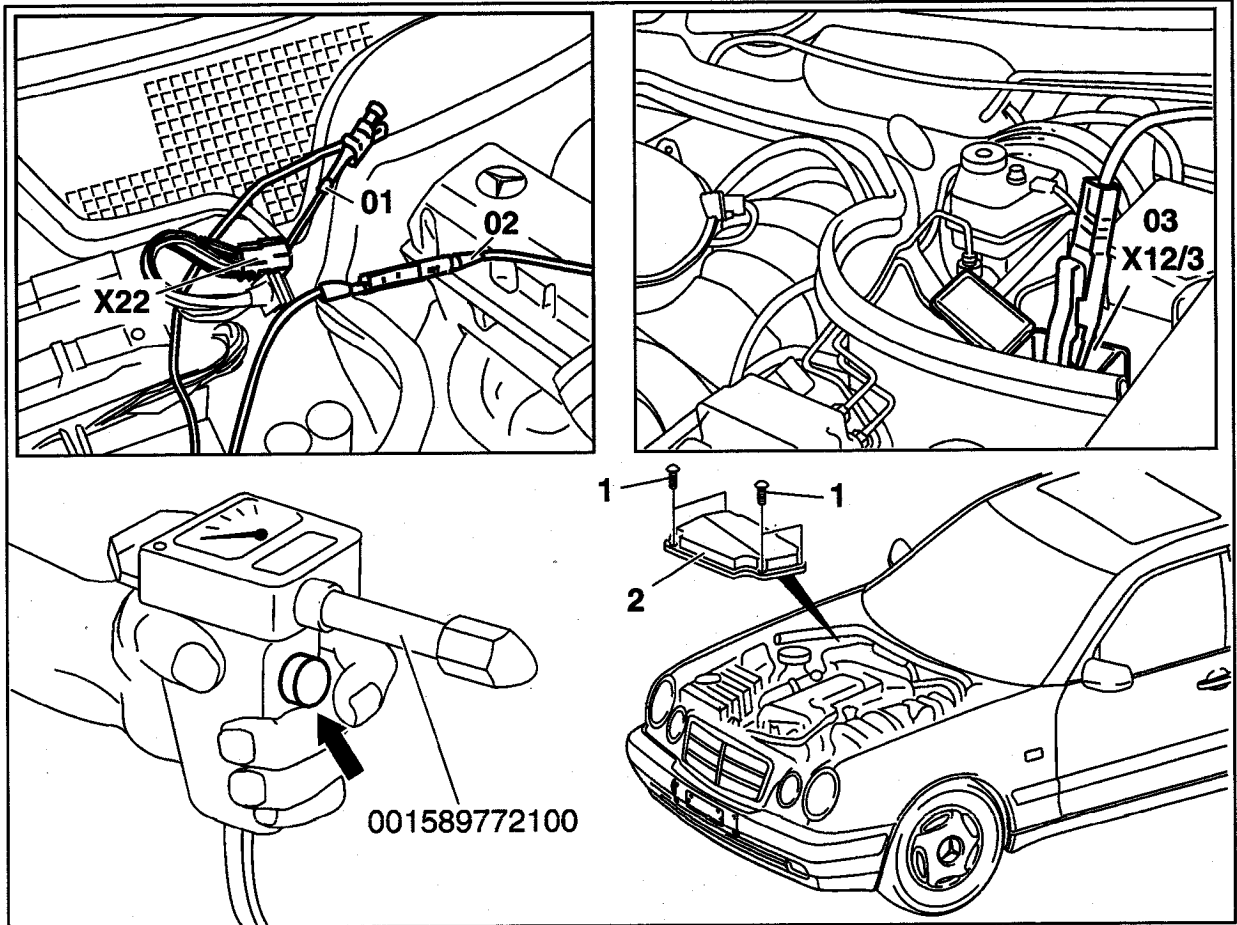
Note

If the engine is started with the crankshaft position sensor (L5) unplugged, a fault is stored in the EZL ignition control unit (N1/3) fault memory (contact 17, pulse readout 17). This must be erased after completing the work.

E. Model 210

Preceding work:

Hazard warnings when hood opened (01-0085).



P01.10-0263-57

Ignition	switch off.
Cover (2) over engine component compartment .	remove, install.
Connector of plug connection (X22) (circuit 50) ..	unplug, plug in.
Clamp of cable (01)	connect to pin 1 of plug connection (X22) circuit 50, disconnect.
Cable (01)	connect to cable (02) of compression recorder, disconnect.
Cover of terminal block (X12/3)	open, close.
Clamp (03) of compression recorder	
001 589 76 21 00	connect to terminal block (X12/3) circuit 30, disconnect.

Engine crank by pressing the contact switch (arrow) on the compression recorder, transmission in Neutral and parking brake applied.



Do not crank engine at ignition/starter switch.

Special tools

