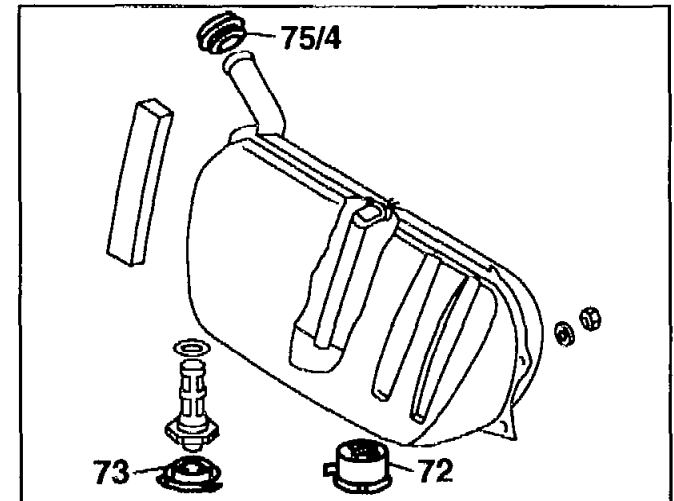


G14

AR47.10-P-4100-01DA

Removing fuel tank

Check suitability of cup seals (72, 73, 75/4) for re-use and correct seating.



P47.10-0255-01

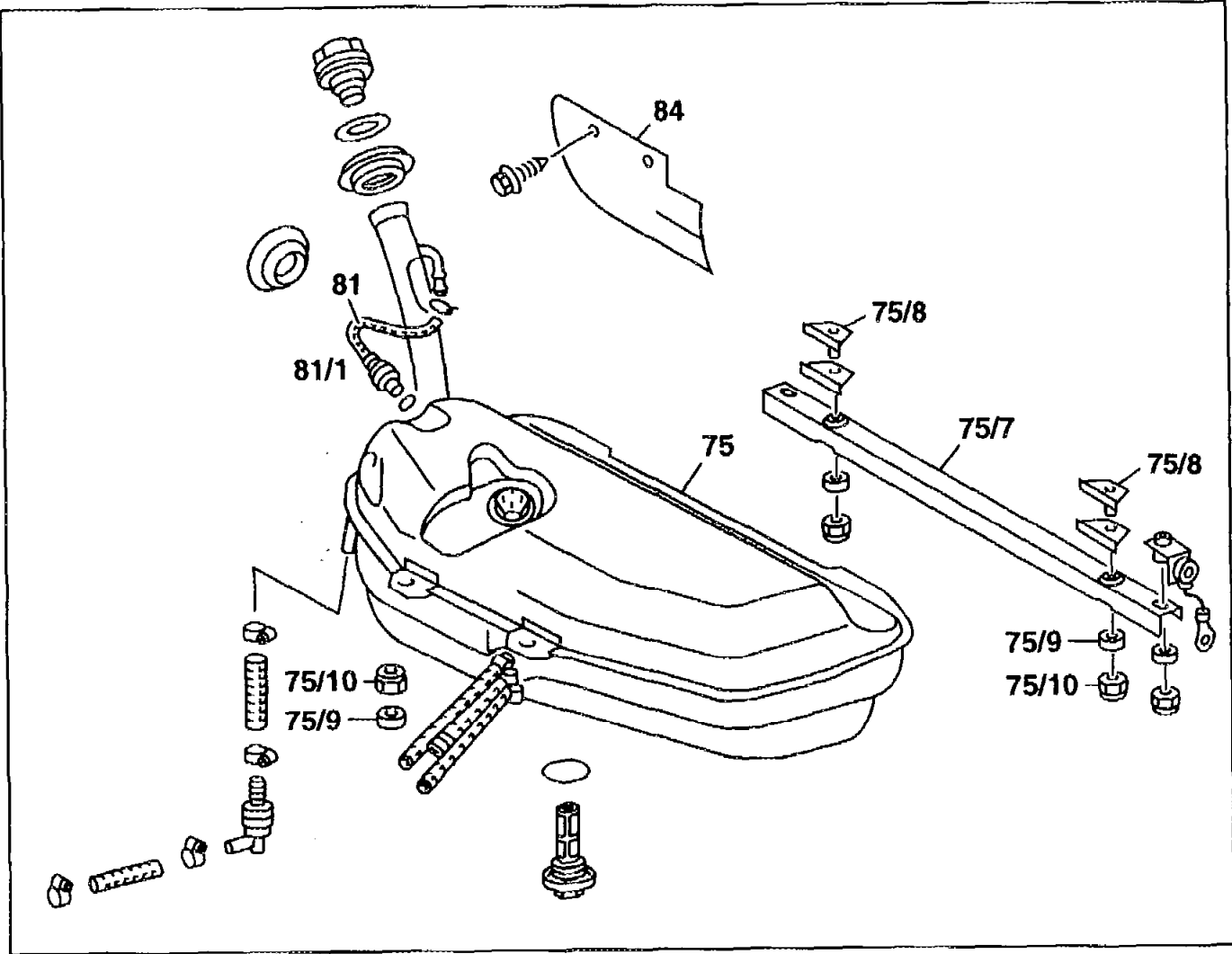


H14	AR47.10-P-4100-01DB	Removing fuel tank		
------------	---------------------	--------------------	--	--




Nm Fuel tank

Number	Designation		Models 124.079/ 082/088/092
BA47.10-P-1002-01B	Self-locking nut to fuel tank U-rail	Nm	30

- 75 Fuel tank
- 75/7 U-rail
- 75/8 Threaded plate
- 75/9 Washer
- 75/10 Self-locking nuts
- 81 Vent pipe
- 81/1 Cup seal
- 84 Filler neck splash guard





- 1 Remove vent pipe (81).
 - 2 Detach exhaust system from the rear mounting points and disconnect.
 - 3 Remove filler neck splash guard (84)
 - 4 Remove U-rail (75/7) and mounting (75/8-75/10)
 - 5 Remove fuel tank (75)
-  When removing the fuel tank, ensure that connector for the vent pipe (81) does not hook itself onto one of the pipes. Push exhaust and level control pipes to the left.
- 6 Install in reverse sequence.
Pay attention to fixing of U-rail (75/7) 
-  Pre-mount vent pipe (81) to fuel tank.
Lay pipe with a constant gradient and without kinks.
Check seating of cup seal (81/1).

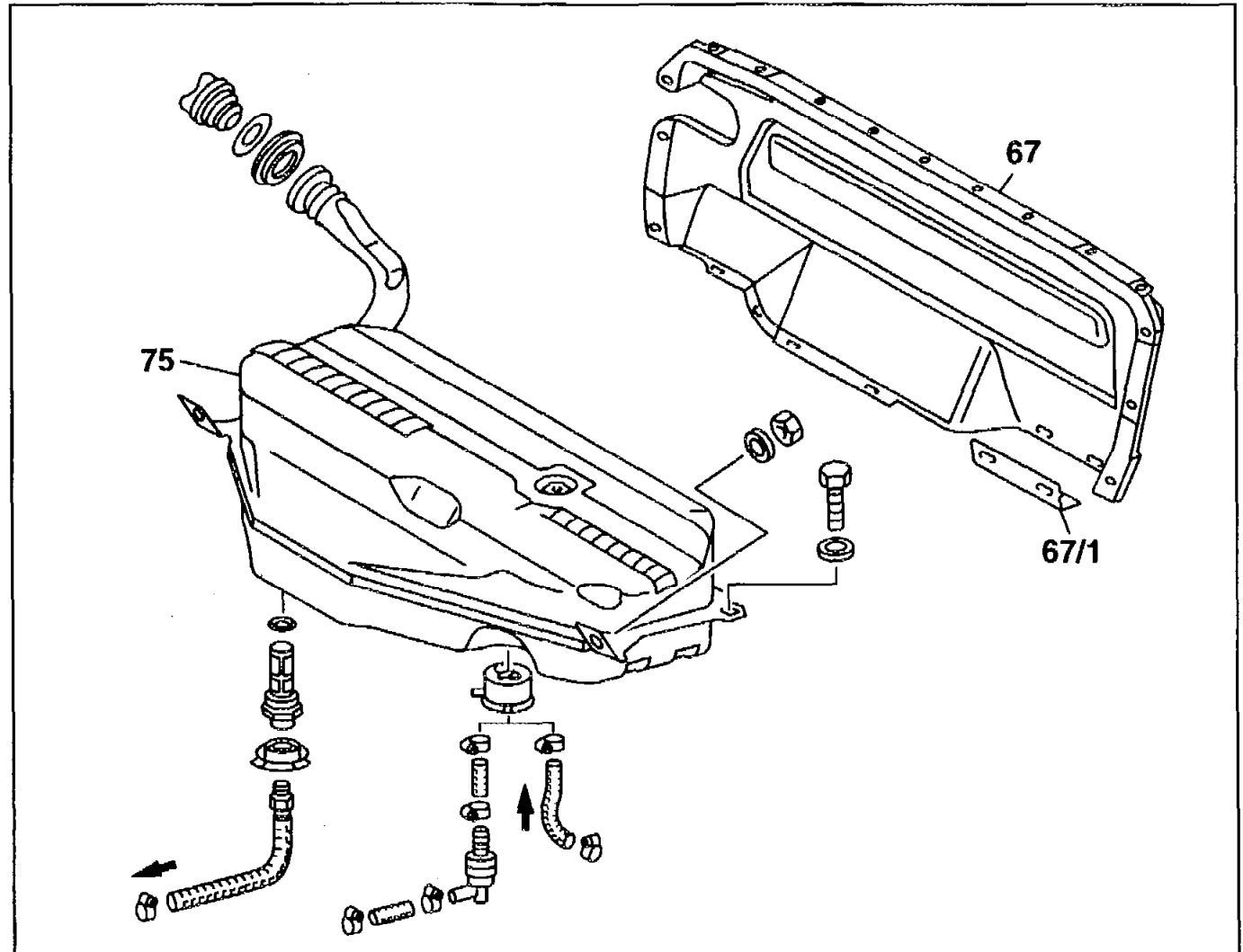


L14


AR47.10-P-4100-01DC

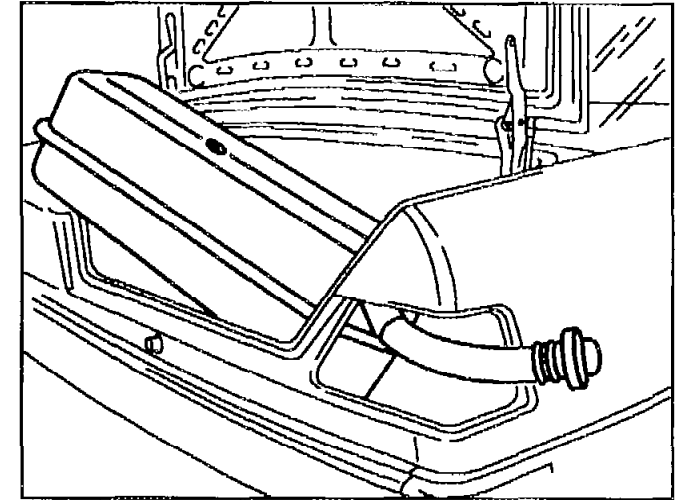
Removing fuel tank

- 67 Partition
- 67/1 Vent pipe
- 75 Fuel tank






- 1 Open soft top compartment cover. To do this, open soft top sufficiently so that the soft top compartment cover can be opened.
- 2 Remove trim in soft top compartment cover.
-  On vehicles with hydraulic soft top, unscrew bracket for hydraulic lines.
- 3 Unscrew cover in soft top compartment cover.
- 4 Remove trim items in trunk.
- 5 Remove spare wheel.
- 6 Remove partition (67) with angle bracket (67/1).
- 7 Remove fuel tank (75). Remove right rear lamp unit if necessary.



P47.10-0258-01

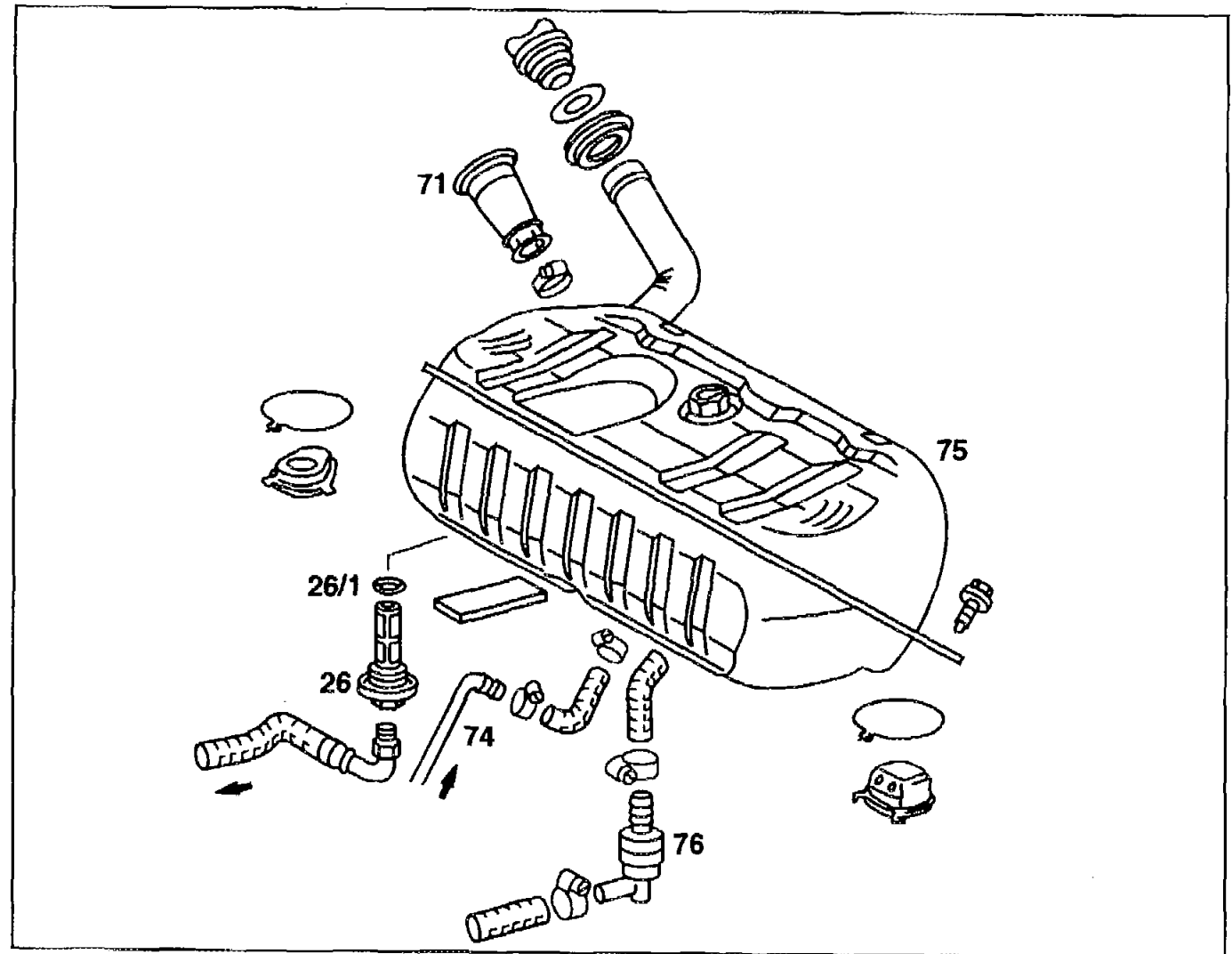
- 8 Install in reverse sequence.
-  When installing, lift front left of fuel tank.

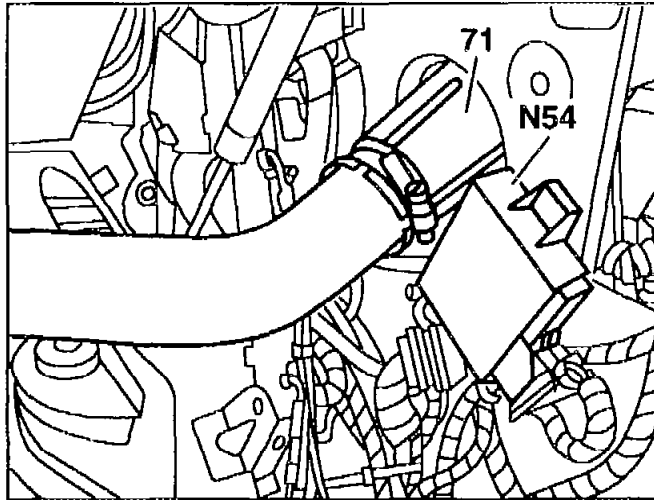
N14

AR47.10-P-4100-01DD

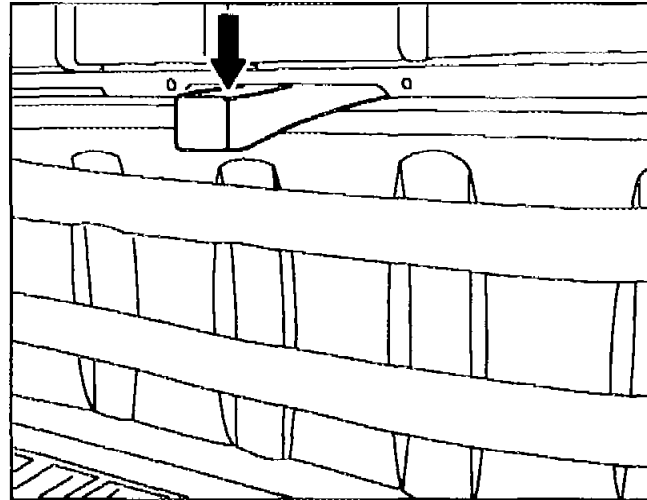
Removing fuel tank

- 26 Fuel strainer
- 26/1 O-ring
- 71 Cover
- 74 Return hose
- 75 Fuel tank
- 76 Vent valve

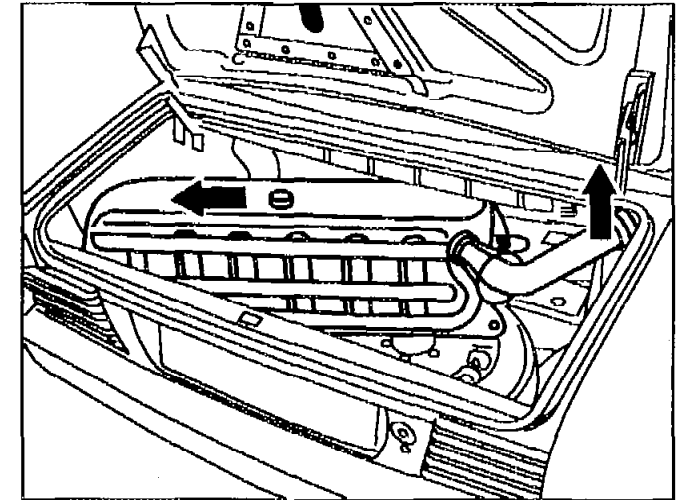




P47.10-0259-01



P47.10-0260-01



P47.10-0261-01

- 1 Remove, install fuel gauge sender.
- 2 Remove partition.
- 3 Loosen clip to push back cover (71).
- 4 Remove infrared remote control module (N54).
- 5 Remove vent valve (76) and fuel return hose (74). To do this, detach and hang exhaust system from the rubber rings. Remove left drive shaft at inner coupling flange.
- 6 Remove fuel tank (75). If necessary lever out from the opening using plastic wedges (arrow) or similar. Pull fuel tank completely back to the left and take out at filler neck.
- 7 Install in reverse sequence. If there is insufficient space, remove fuel strainer (26) and install from below. Replace O-ring (26/1).



P14

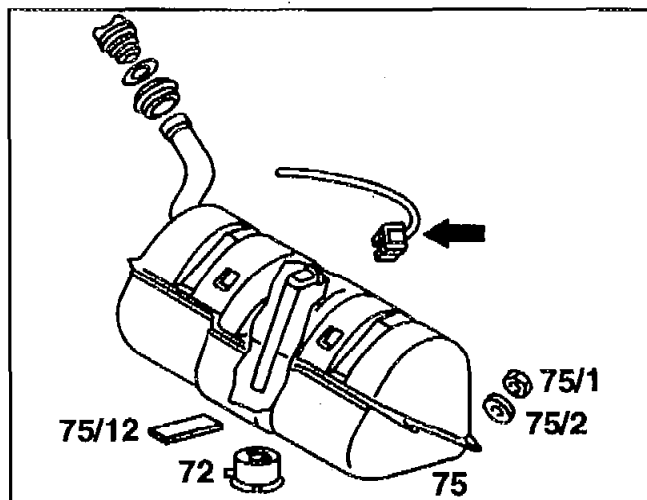
AR47.10-P-4100-01DE

Removing fuel tank

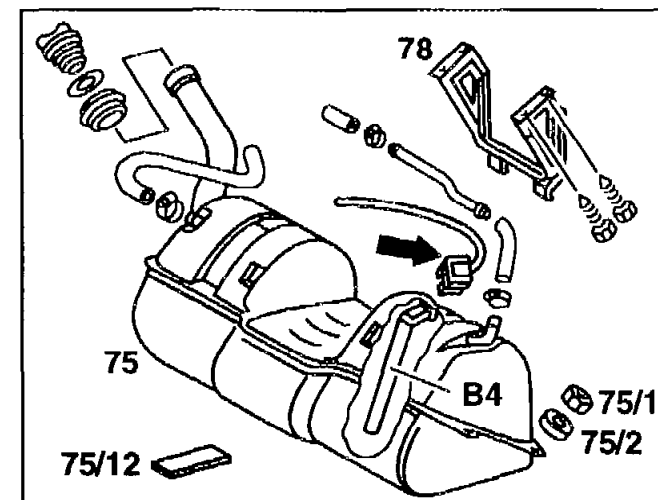
Left-hand illustration without ski bag

Right-hand illustration with ski bag

- 1 Remove expansion reservoir, install.
- 2 Remove console (78) of ski bag mount.



P47.10-0263-01



P47.10-0264-01

i With special equipment "Soundsystem Bose": remove amplifier unit, install.

- 3 Install in reverse sequence



A15 AR47.30-P-8212-01GJ	Connection diagram of evaporative emission control system		
--------------------------------	---	--	--

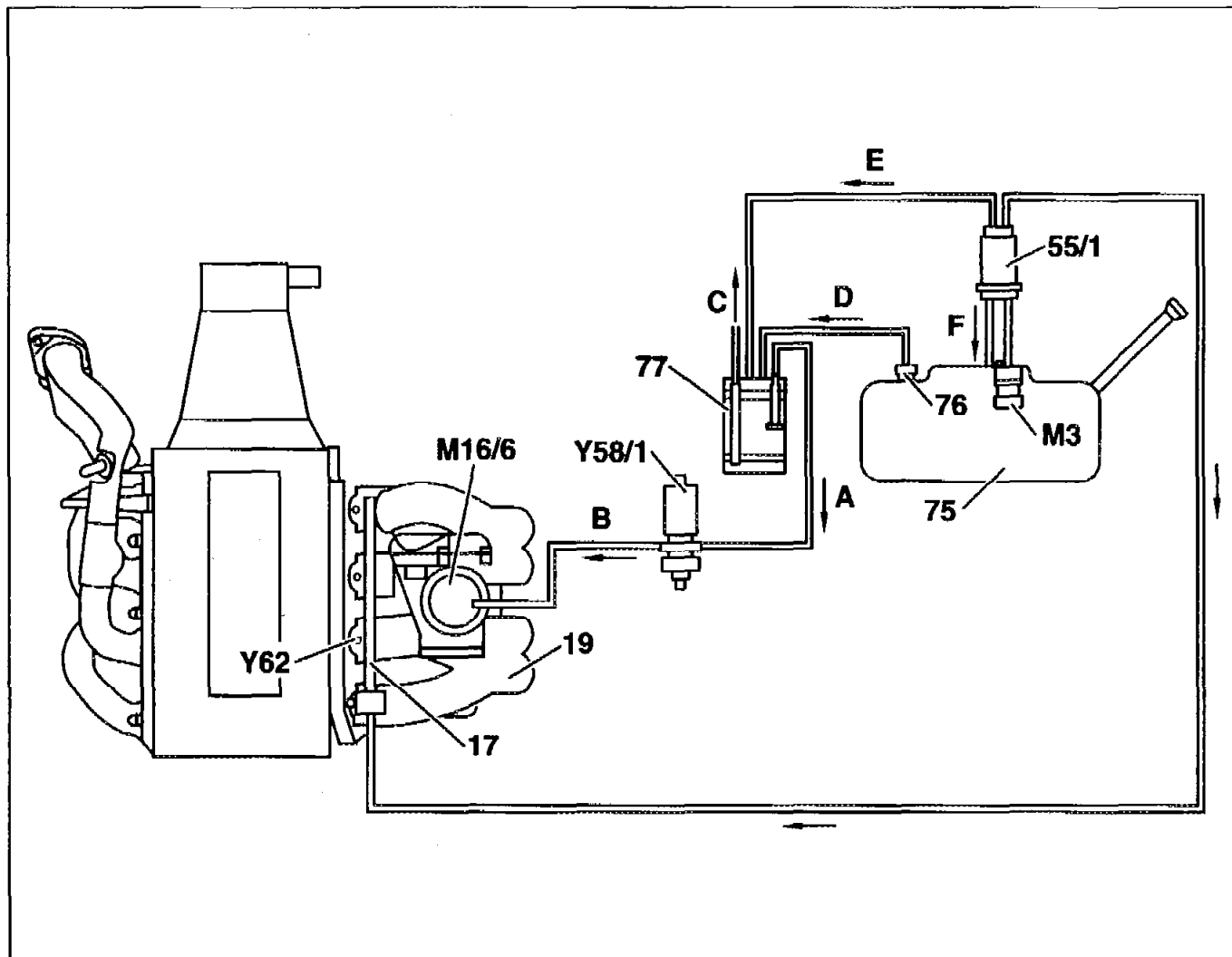
Connection diagram
Evaporative emission control system
Engine 111 in model 163

- 17 Fuel rail
- 19 Intake manifold
- 55/1 Fuel filter with pressure regulator
- 75 Fuel tank
- 76 Vent valve
- 77 Activated charcoal canister

- M3 Fuel pump
- M16/6 Idle speed control (ISC) actuator

- Y58/1 Purge control valve
- Y62 Fuel injector

- A Activated charcoal canister - purge control valve line
- B Purge control valve - idle speed control (ISC) actuator line
- C Vent line



- D Vent valve - fuel tank - activated charcoal canister line
- E Fuel filter - activated charcoal canister degassing line
- F Fuel filter - fuel tank return flow line



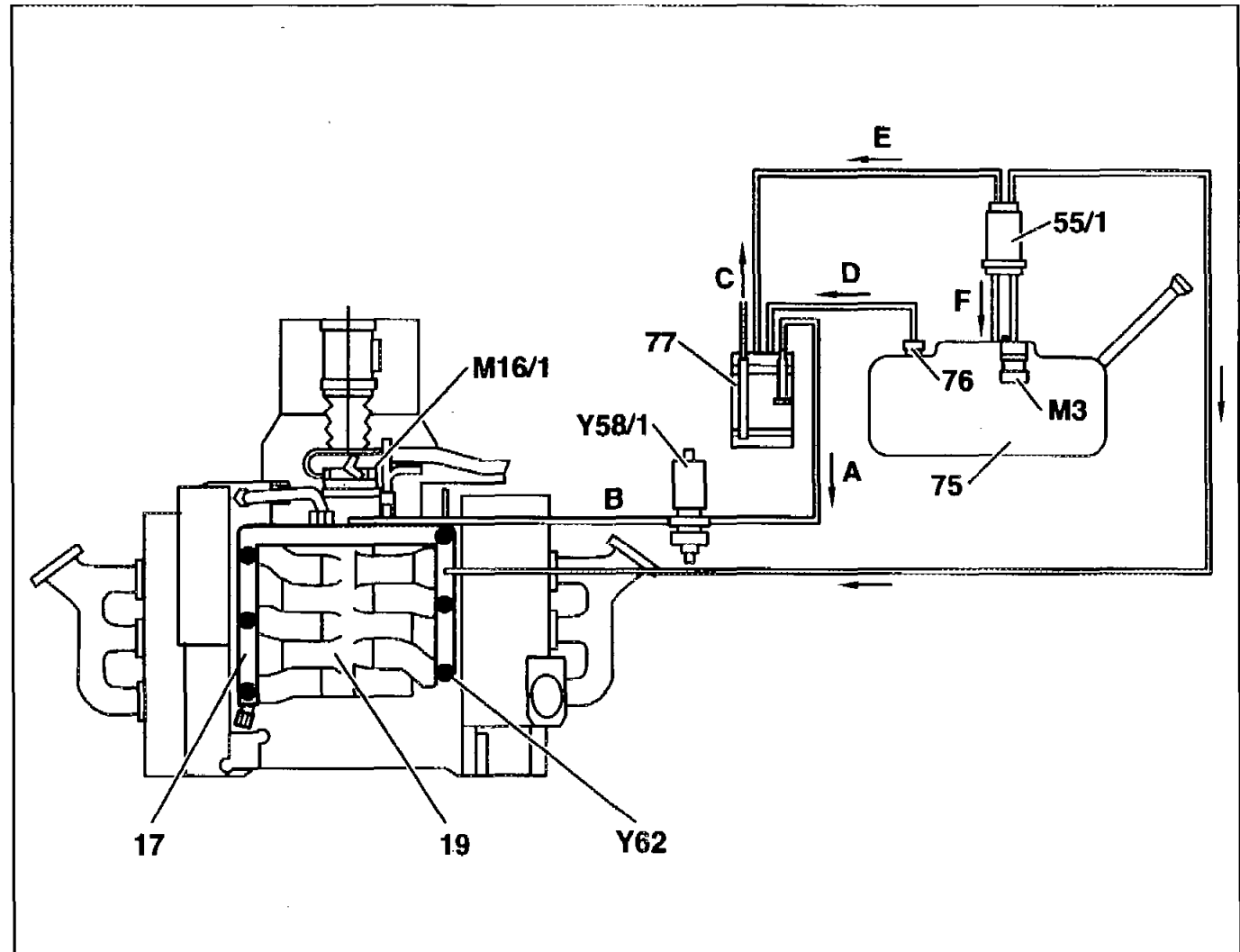
B15 AR47.30-P-8212-01GI	Connection diagram of evaporative emission control system		
--------------------------------	---	--	--

Shown on M112

Connection diagram of evaporative emission control system engine 112 except

(USA) in model 163

- 17 Fuel rail
- 19 Intake manifold
- 55/1 Fuel filter
- 75 Fuel tank
- 76 Vent valve
- 77 Activated charcoal canister
- M3 Fuel pump
- M16/1 Electronic accelerator actuator
- Y58/1 Purge control valve
- Y62 Fuel injector
- A Activated charcoal canister - purge control valve line
- B Purge control valve - intake manifold line
- C Vent line
- D Fuel tank vent valve - activated charcoal canister line
- E Fuel filter - activated charcoal canister degassing line
- F Fuel filter - fuel tank return flow line



<p>C15 AR47.30-P-8212-01GH</p>	<p>Connection diagram of evaporative emission control system</p>		
---------------------------------------	--	--	--

Shown on M112

Connection diagram of evaporative emission control system engine 112 version

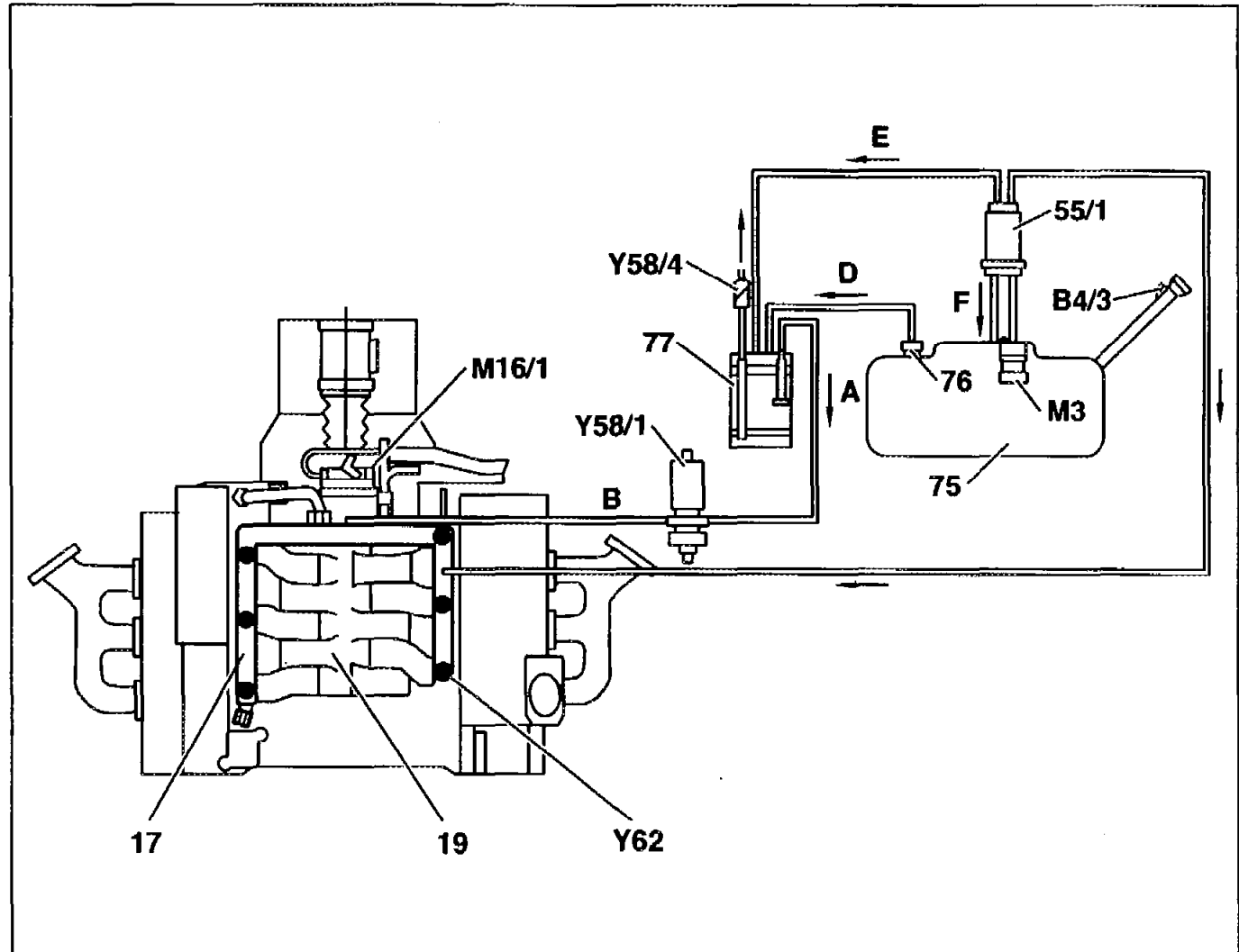
(USA) in model 163

- 17 Fuel rail
- 19 Intake manifold
- 55/1 Fuel filter
- 75 Fuel tank
- 76 Vent valve
- 77 Activated charcoal canister

- B4/3 Pressure sensor
- M3 Fuel pump
- M16/1 Electronic accelerator actuator
- Y58/1 Purge control valve
- Y58/4 Activated charcoal canister shutoff valve
- Y62 Fuel injector

- A Activated charcoal canister - purge control valve line
- B Purge control valve - intake manifold line

- D Fuel tank vent valve - activated charcoal canister line



- E Fuel filter - activated charcoal canister degassing line

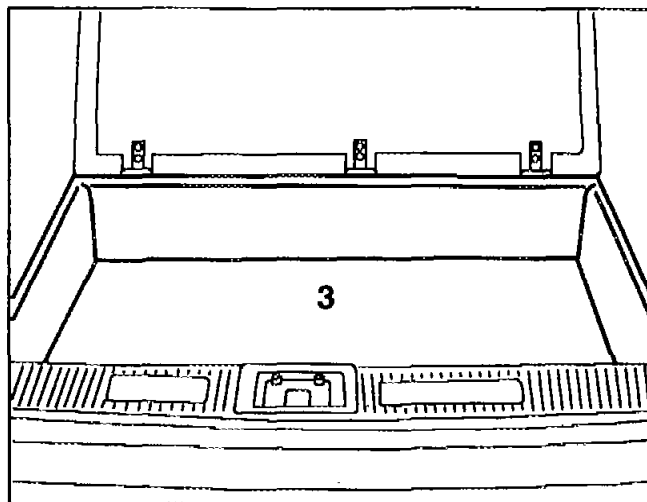
- F Fuel filter - fuel tank return flow line

**D15**

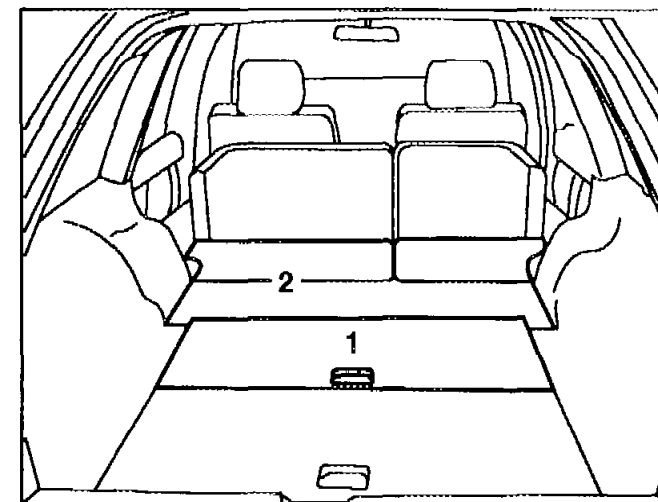
AR47.10-P-7000-01DA

Removing fuel gauge sender

- 1 Remove front loading flap (1) or seat bench seatback (2), install
- 2 Partially remove loading area trim (3) from loading flap (1), install



P47.10-0269-01



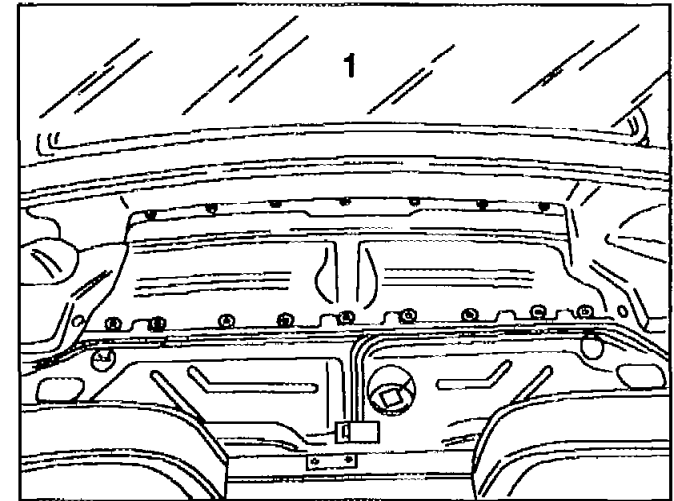
P47.10-0270-01

**E15**

AR47.10-P-7000-01DB

Removing fuel gauge sender

- 1 Open, close soft top compartment cover (1). To do this, open soft top until the soft top compartment cover can be opened or is opened hydraulically
- 2 Unclip trim in soft top compartment, clip in



P47.10-0271-01



F15	AR47.10-P-7571-01E	Converting expansion reservoir	Model 202 up to 31.03.96	
------------	--------------------	--------------------------------	--------------------------	--

i Installation of new expansion reservoir on models with old side panel.

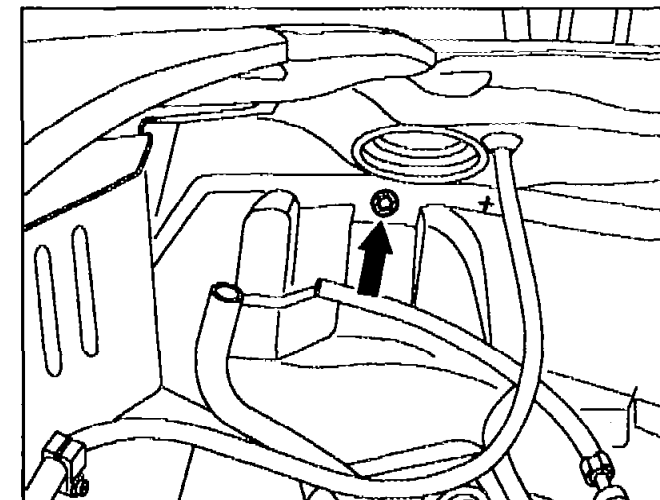
- 1 Seal top attachment point (arrow) with 6 mm screw and body sealant.
- 2 Remove wheelhouse liner in right of luggage compartment.
- 3 Mark attachment point and drill with \varnothing 6.5 mm; use expansion reservoir as a template.

i Ensure that no wiring is damaged at the wheelhouse in the luggage compartment.

- 4 Remove paint around the drilled hole.

i The attachment point should be bright metallic in order to achieve an optimal ground connection.

- 5 Seal attachment point from the outside with body sealant.



P47.10-0369-01



G15	AR47.20-P-5713-01A	Installing modified fuel pump	Model 202.028 C 36 AMG
------------	--------------------	-------------------------------	------------------------

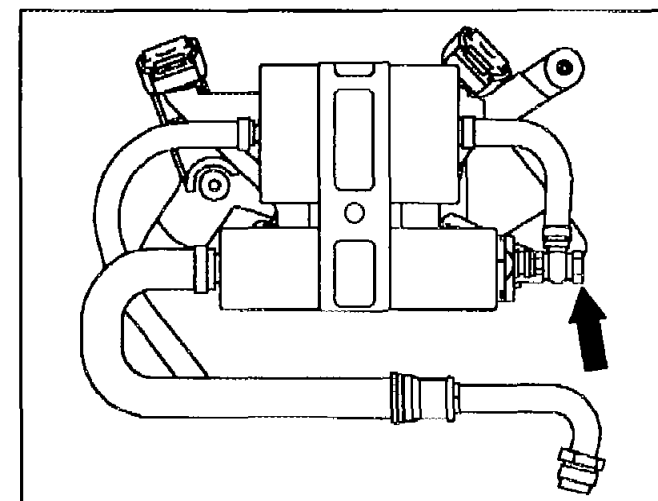
Nm Fuel pump

Number	Designation	Engine
BA47.20-P-1001-01A	Banjo bolt of fuel pipe to fuel pump of fuel filter	104, 119, 120
	Nm	27

- 1 Install injection pump, fit on pump holder only.
- 2 Tighten banjo bolt (arrow).
- 3 Tighten pump holder.

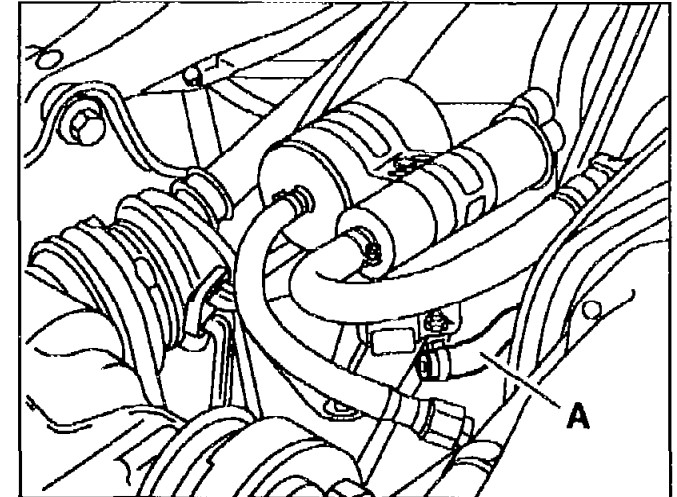


Routing of electric cable as for previous fuel pump.



P47.20-0281-01

- 4 Detach vent pipe (A) from fuel tank and shorten to 43 mm.

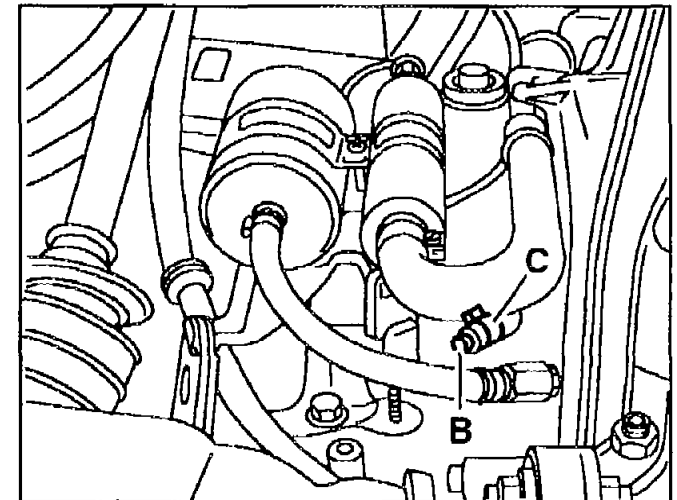


P47.20-0282-01

- 5 Seal vent pipe (A) with plug (included in parts supply) and secure with \varnothing 13.5 mm hose clamp or hose clamp (C) (parts supplied).

i Use hose clamp (C) only with suitable pliers, make Caillau.

- 6 Attach vent pipe (A) with standard clamp to fuel tank.



P47.20-0283-01

<p>J15 AR47.30-P-8212-01DH</p>	<p>Connection diagram of evaporative emission control system</p>		
---------------------------------------	--	--	--

Connection diagram of evaporative emission control system engine 112 version

(USA) as of 09/97

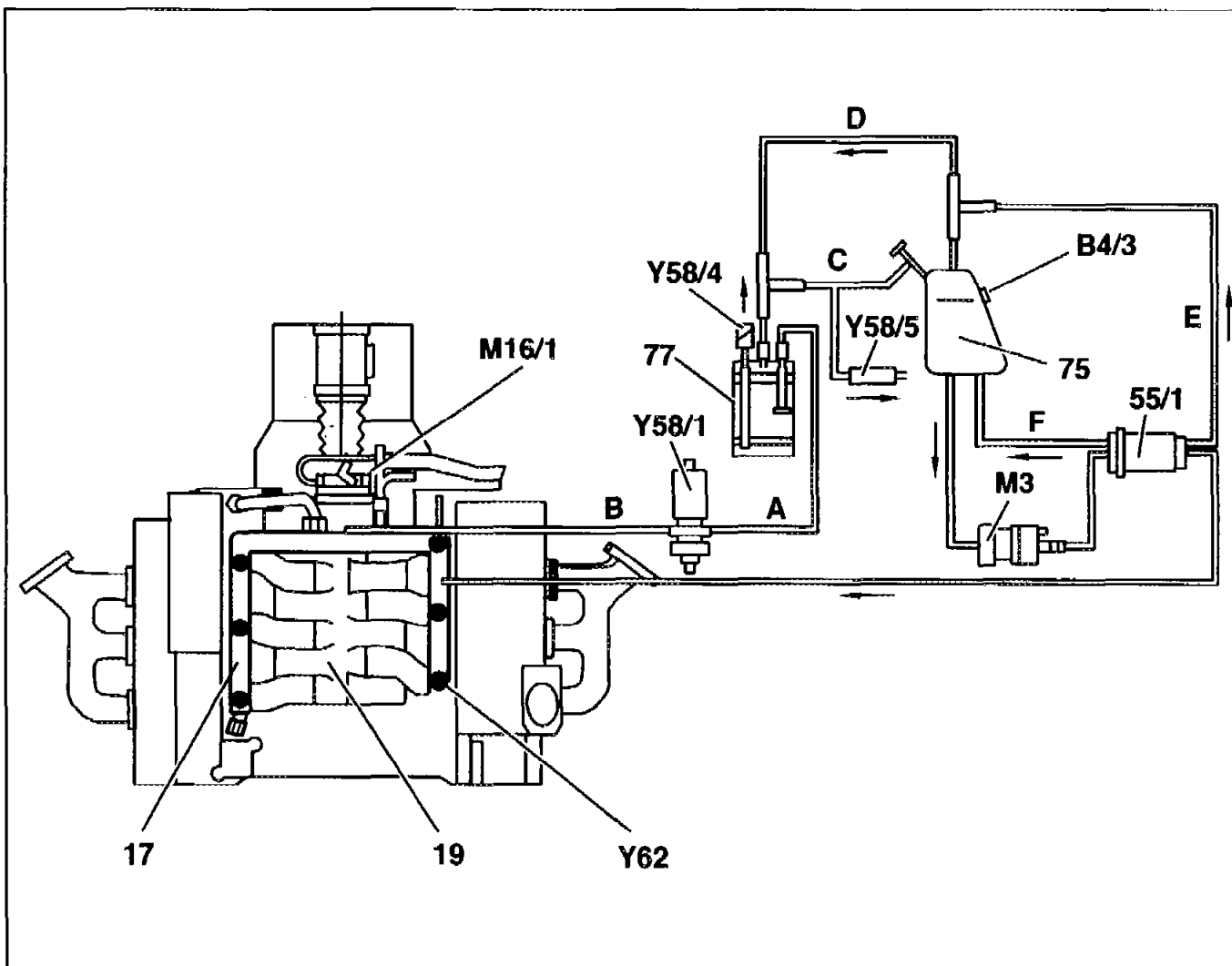
- 17 Fuel rail
- 19 Intake manifold
- 55/1 Fuel filter
- 75 Fuel tank
- 77 Activated charcoal filter

- B4/3 Pressure sensor
- M3 Fuel pump
- M16/1 Electronic accelerator actuator

- Y58/1 Purge control valve
- Y58/4 Activated charcoal filter shutoff valve
- Y58/5 Pressure relief valve (ORVR)
- Y62 Fuel injector

- A Activated charcoal filter - purge control valve line
- B Purge control valve - intake manifold line
- C Activated charcoal filter - fuel tank line

- D Fuel tank - activated charcoal filter line



- E Fuel filter - fuel tank degassing line

- F Fuel filter - fuel tank return flow line

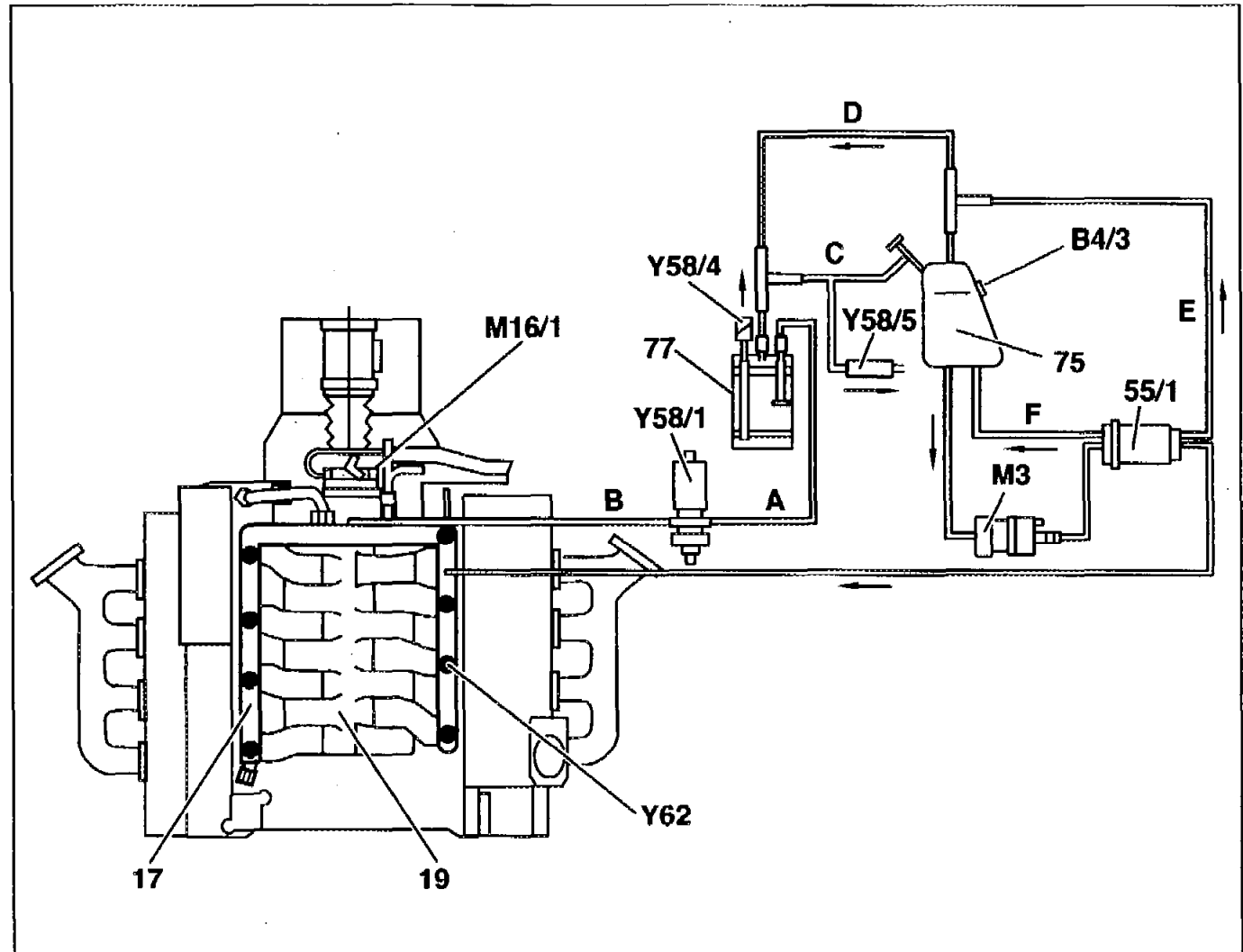


K15 AR47.30-P-8212-01DJ	Connection diagram of evaporative emission control system		
--------------------------------	---	--	--

Connection diagram of evaporative emission control system engine 113 version

(USA) as of 09.97

- 17 Fuel rail
- 19 Intake manifold
- 55/1 Fuel filter with integrated fuel pressure regulator
- 75 Fuel tank
- 77 Activated charcoal filter
- B4/3 Pressure sensor
- M3 Fuel pump
- M16/1 Electronic accelerator actuator
- Y58/1 Purge control valve
- Y58/5 Pressure relief valve (ORVR)
- Y62 Fuel injector
- A Activated charcoal filter - purge control valve line
- B Purge control valve - intake manifold line
- C Activated charcoal filter - fuel tank vent line
- D Fuel tank - activated charcoal filter line
- E Fuel filter - fuel tank degassing line
- F Fuel filter - fuel tank return flow line

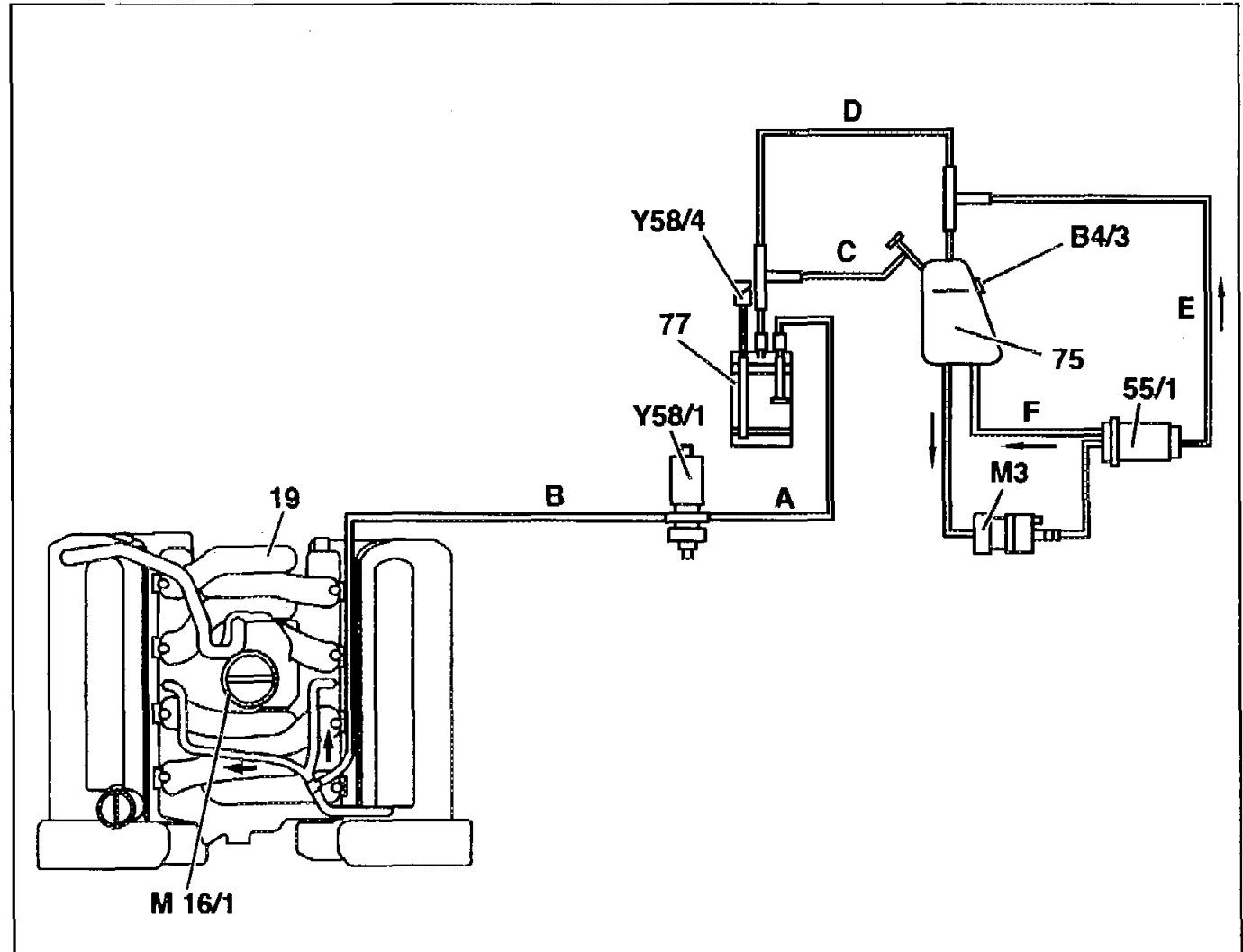




L15 AR47.30-P-8212-01EC	Connection diagram of evaporative emission control system		
--------------------------------	---	--	--

Connection diagram of evaporative emission control system model 129 with engine 119
Model Year 98 version (USA)

- 19 Suction pipe
- 55/1 Fuel filter
- 75 Fuel tank
- 77 Activated charcoal canister
- B4/3 Pressure sensor
- M3 Fuel pump
- M16/1 Electronic accelerator actuator
- Y58/1 Purge control valve
- Y58/4 Activated charcoal canister shutoff valve
- A Activated charcoal canister - purge control valve pipe
- B Purge control valve - intake manifold pipe
- C Activated charcoal canister - fuel tank pipe
- D Fuel tank - activated charcoal canister pipe
- E Fuel filter - fuel tank degassing pipe
- F Fuel filter - fuel tank fuel return flow pipe



**M15**

AR47.30-P-8212-01DA

Connecting diagram of evaporation
emission control system

**Connecting diagram of evaporation
emission control system HFM-SFI
models 124, 129, 140 without ski bag
with engine 104**

Shown on model 124

19a Ram intake manifold

19b Resonance intake manifold

75 Fuel tank

76 Vent valve

77 Activated charcoal canister

M16/6 Idle speed control (ISC) actuator

N3/4 HFM sequential multiport fuel
injection/ignition system (HFM-SFI)
control module

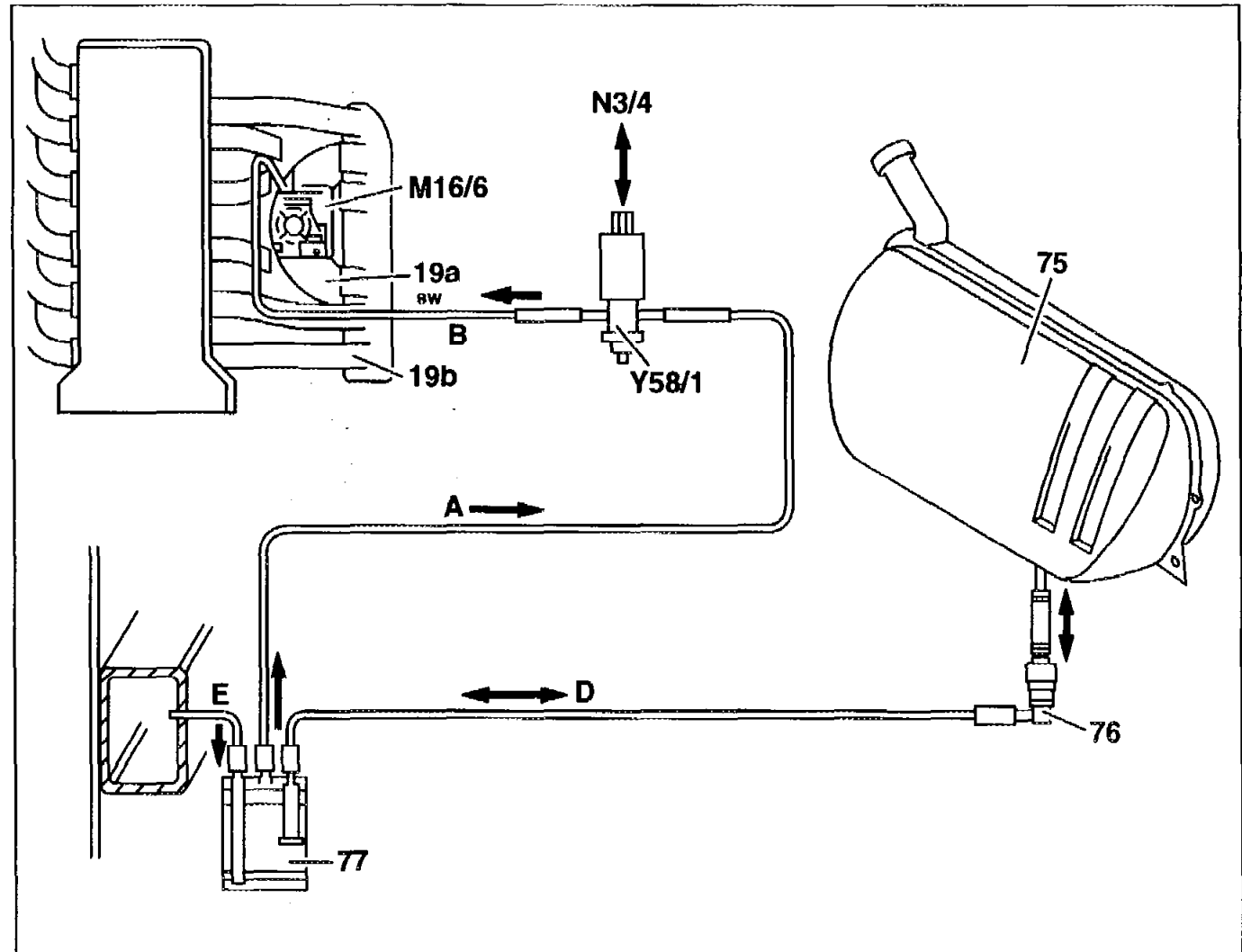
Y58/1 Purge switchover valve

A Activated charcoal canister/purge
switchover valve pipe

B Purge switchover valve/idle speed
control (ISC) actuator (M16/6) pipe

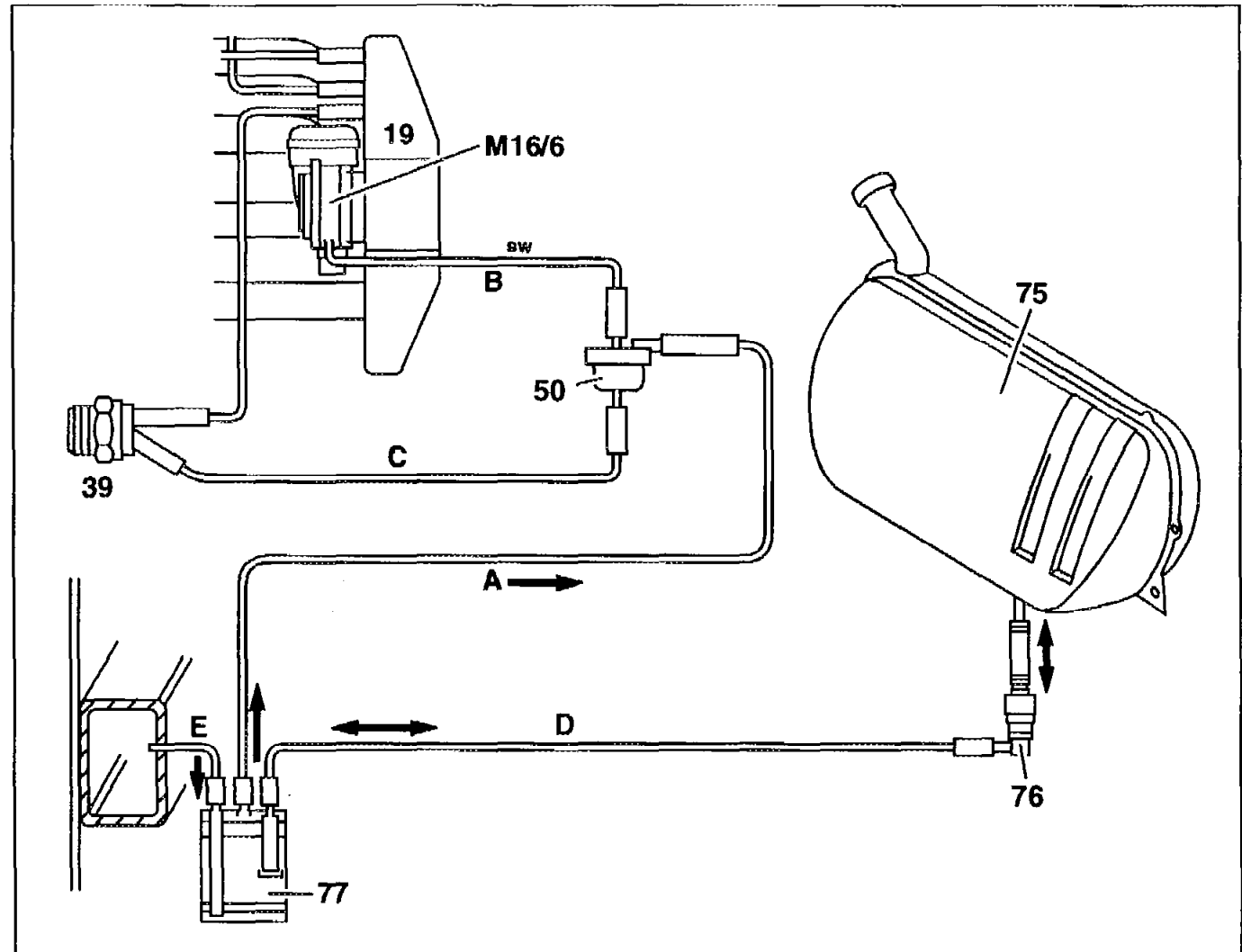
D Vent valve/activated charcoal
canister pipe

E Vent pipe



**Connecting diagram of evaporation
emission control system PEC 1st version
model 124 with engine 111**

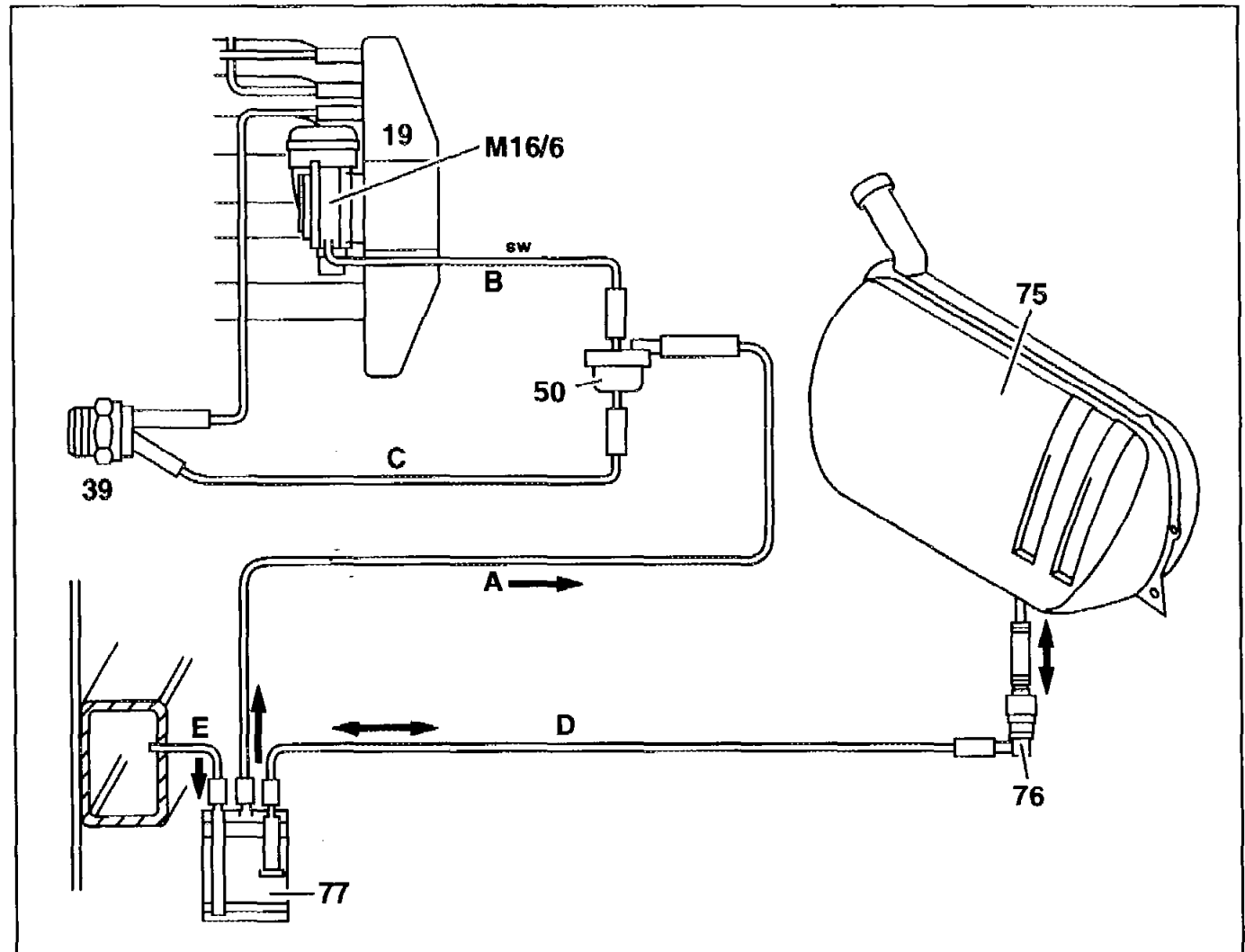
- 19 Intake manifold
- 39 Thermo valve (opens at 70°C/
closes at 35°C)
- 50 Purge valve
- 75 Fuel tank
- 76 Vent valve
- 77 Activated charcoal canister
- M16/6 Idle speed control (ISC) actuator
- A Activated charcoal canister/purge
valve pipe
- B Purge valve/idle speed control (ISC)
actuator (M16/6) pipe
- C Purge valve/thermo valve pipe
- D Vent valve/activated charcoal
canister pipe
- E Vent pipe



**Connecting diagram of evaporation
emission control system HFM-SFI
model 124 and PEC 2nd version
model 124 with engine 111**

Shown on engine 111 with HFM-SFI

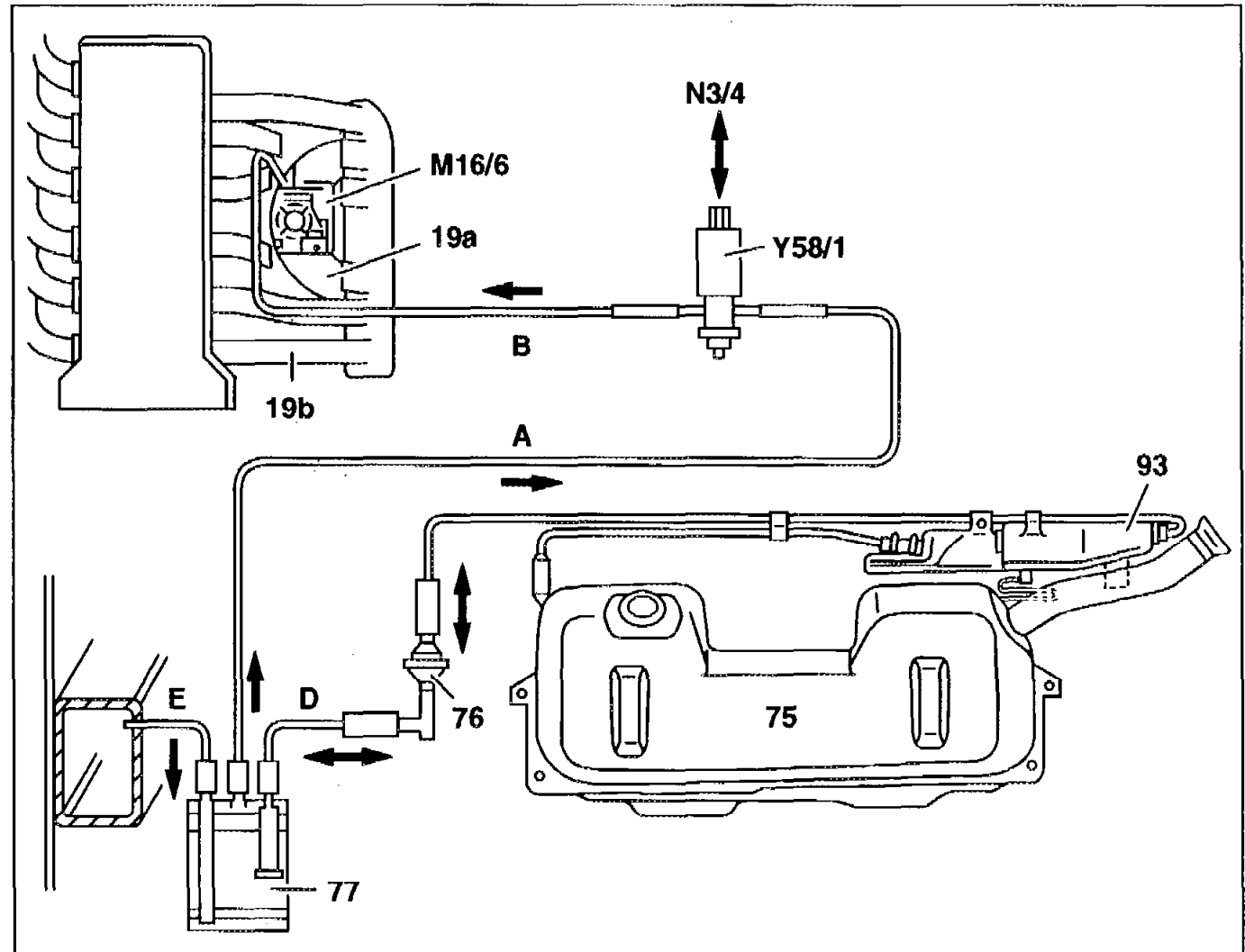
- 19 Intake manifold
- 75 Fuel tank
- 76 Vent valve
- 77 Activated charcoal canister
- M16/6 Idle speed control (ISC) actuator
- N3/4 HFM sequential multiport fuel injection/ignition system (HFM-SFI) control module
- Y58/1 Purge switchover valve
- A Activated charcoal canister/purge switchover valve pipe
- B Purge switchover valve/idle speed control (ISC) actuator (M16/6) pipe
- D Vent valve/activated charcoal canister pipe
- E Vent pipe



<p>P15 AR47.30-P-8212-01DB</p>	<p>Connecting diagram of evaporation emission control system</p>		
---------------------------------------	--	--	--

Connecting diagram of evaporation emission control system HFM-SFI model 140, engine 104 with ski bag

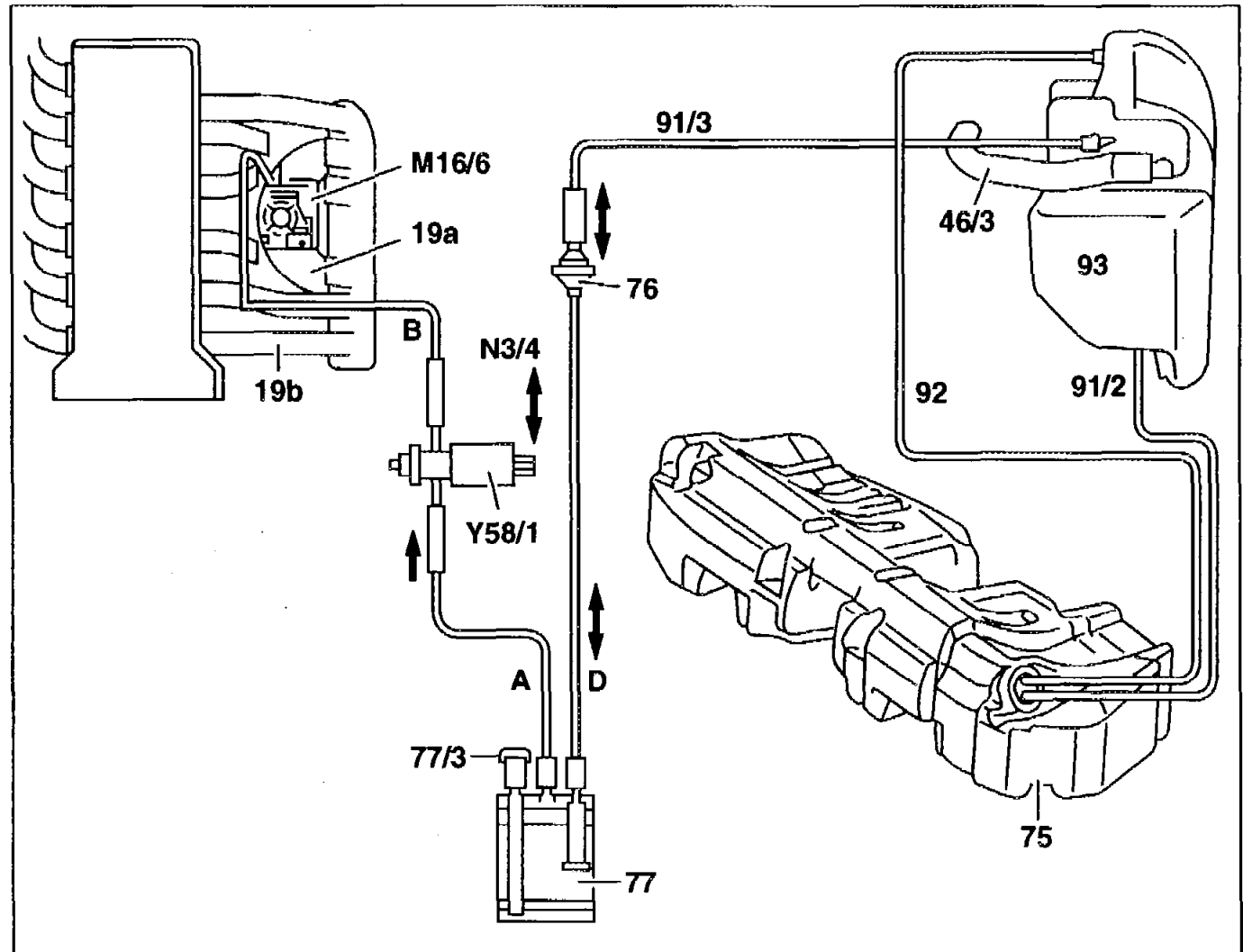
- 19a Ram intake manifold
- 19b Resonance intake manifold
- 75 Fuel tank
- 76 Vent valve
- 77 Activated charcoal canister
- 93 Fuel expansion reservoir
- M16/6 Idle speed control (ISC) actuator
- N3/4 HFM sequential multiport fuel injection/ignition system (HFM-SFI) control module
- Y58/1 Purge switchover valve
- A Activated charcoal canister/purge switchover valve pipe
- B Purge switchover valve/idle speed control (ISC) actuator (M16/6) pipe
- D Vent valve/activated charcoal canister pipe
- E Vent pipe



<p>A16 AR47.30-P-8212-01DC</p>	<p>Connecting diagram of evaporation emission control system</p>		
---------------------------------------	--	--	--

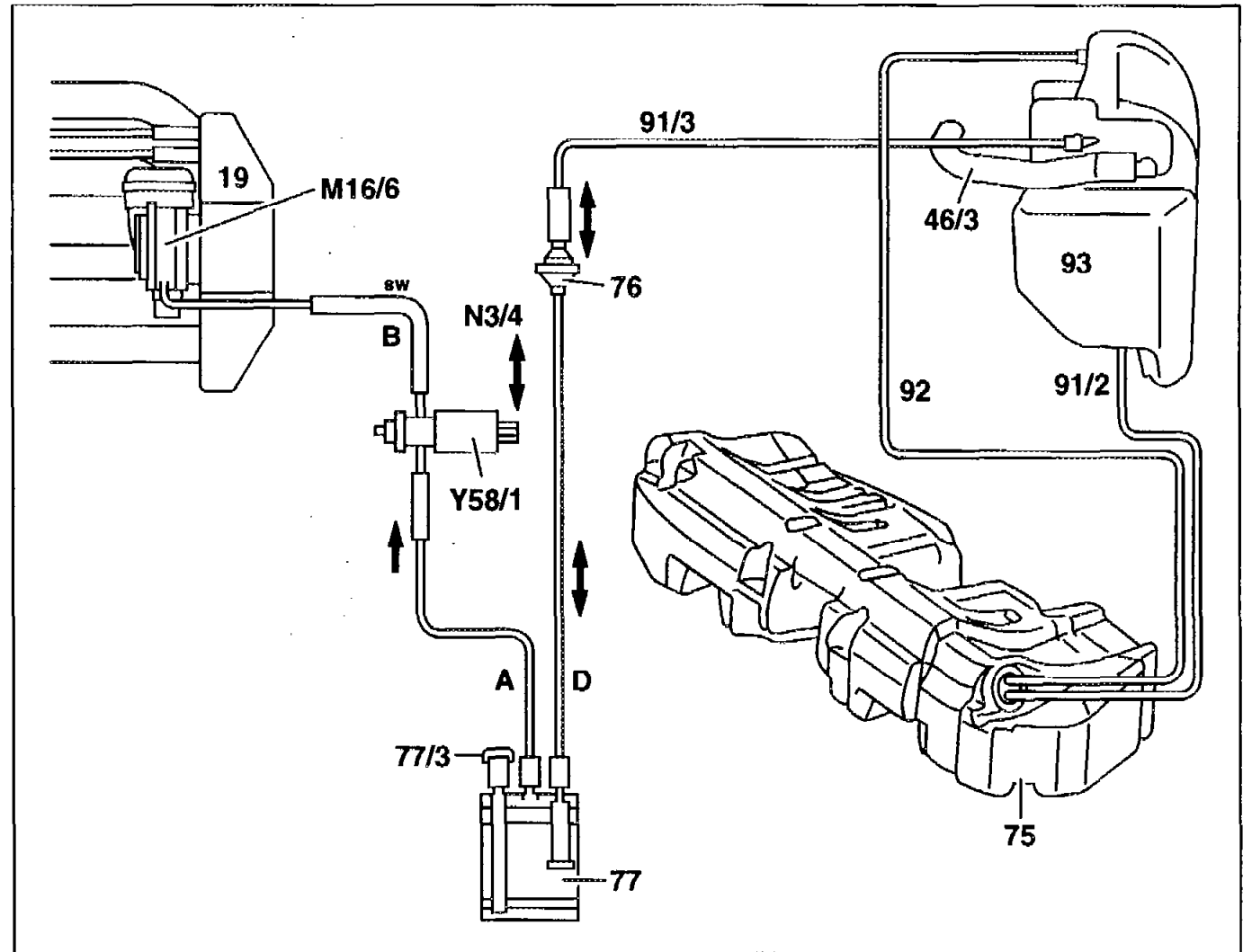
Function diagram of evaporation emission control system HFM-SFI model 202.028 up to 7/96

- 19a Ram intake manifold
- 19b Resonance intake manifold
- 46/3 Vent pipe to filler neck
- 75 Fuel tank
- 76 Vent valve
- 77 Activated charcoal canister
- 77/3 Air inlet cap
- 91/2 Vent pipe for refuelling
- 91/3 Air inlet and vent pipe to vent valve
- 92 Air inlet and vent pipe from fuel tank
- 93 Fuel expansion reservoir
- M16/6 Idle speed control (ISC) actuator
- N3/4 HFM sequential multiport fuel injection/ignition system (HFM-SFI) control module
- Y58/1 Purge switchover valve
- A Activated charcoal canister/purge valve pipe
- B Purge valve/idle speed control actuator (ISC, M16/6) pipe
- D Vent valve/activated charcoal canister pipe



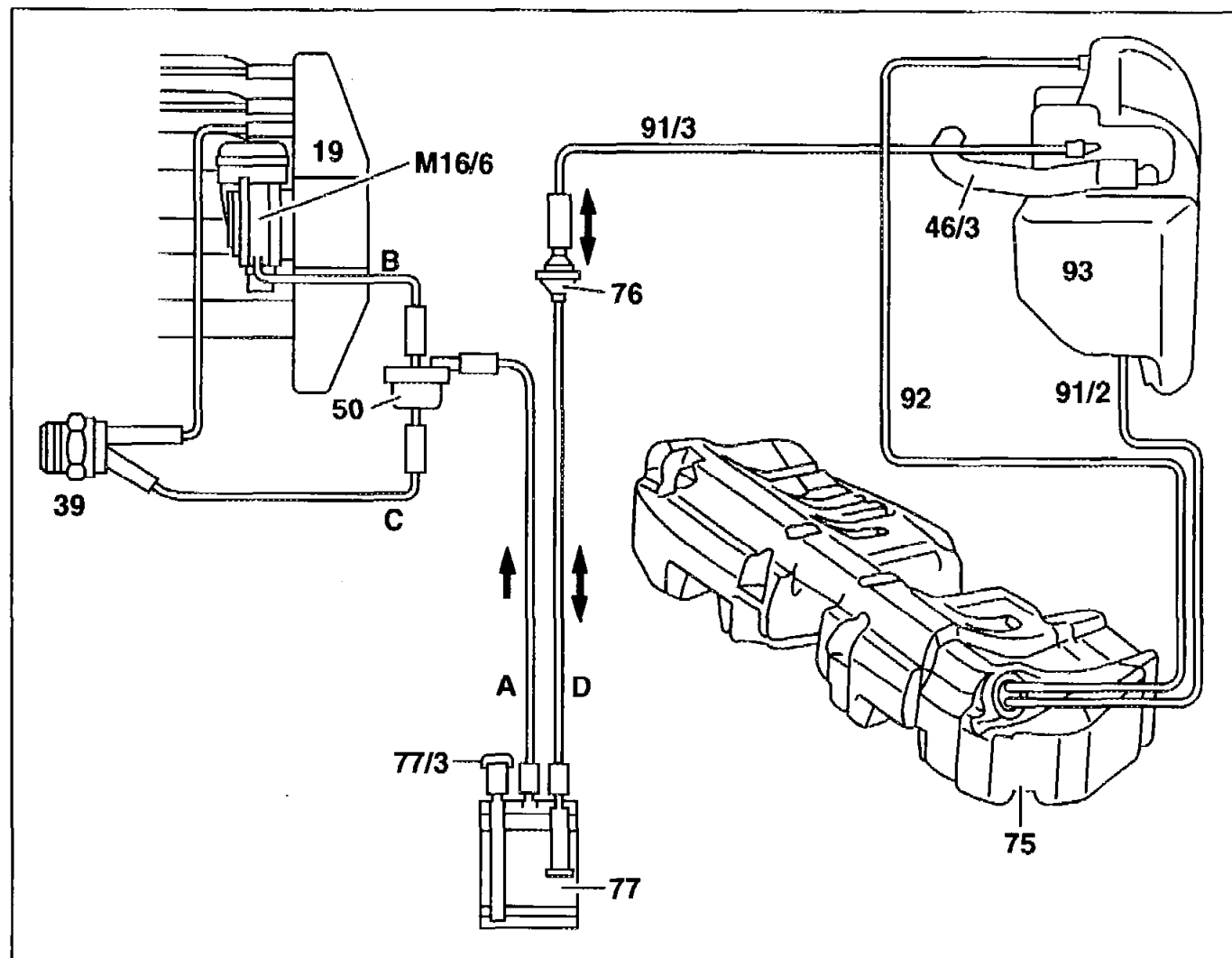
Connecting diagram of evaporation emission control system HFM-SFI model 202.022

- 19 Intake manifold
 - 46/3 Vent pipe to filler neck
 - 75 Fuel tank
 - 76 Vent valve
 - 77 Activated charcoal canister
 - 77/3 Air inlet cap
 - 91/2 Vent pipe for refuelling
 - 91/3 Air inlet and vent pipe to vent valve
 - 92 Air inlet and vent pipe from fuel tank
 - 93 Fuel expansion reservoir
 - M16/6 Idle speed control (ISC) actuator
 - N3/4 HFM sequential multiport fuel injection/ignition system (HFM-SFI) control module
 - Y58/1 Purge switchover valve
-
- A Activated charcoal canister/purge switchover valve pipe
 - B Purge switchover valve/idle speed control actuator (ISC, M16/6) pipe
 - D Vent valve/activated charcoal canister pipe



Connecting diagram of evaporation emission control system PEC model 202 with engine 111

- 19 Intake manifold
 - 39 Thermo valve (opens at 70°C/ closes at 35°C)
 - 46/3 Vent pipe to filler neck
 - 50 Purge valve
 - 75 Fuel tank
 - 76 Vent valve
 - 77 Activated charcoal canister
 - 77/3 Air inlet cap
 - 91/2 Vent pipe for refuelling
 - 91/3 Air inlet and vent pipe to vent valve
 - 92 Air inlet and vent pipe from fuel tank
 - 93 Fuel expansion reservoir
 - M16/6 Idle speed control (ISC) actuator
-
- A Activated charcoal canister/purge switchover valve pipe
 - B Purge switchover valve/idle speed control actuator (ISC, M16/6) pipe
 - D Vent valve/activated charcoal canister pipe



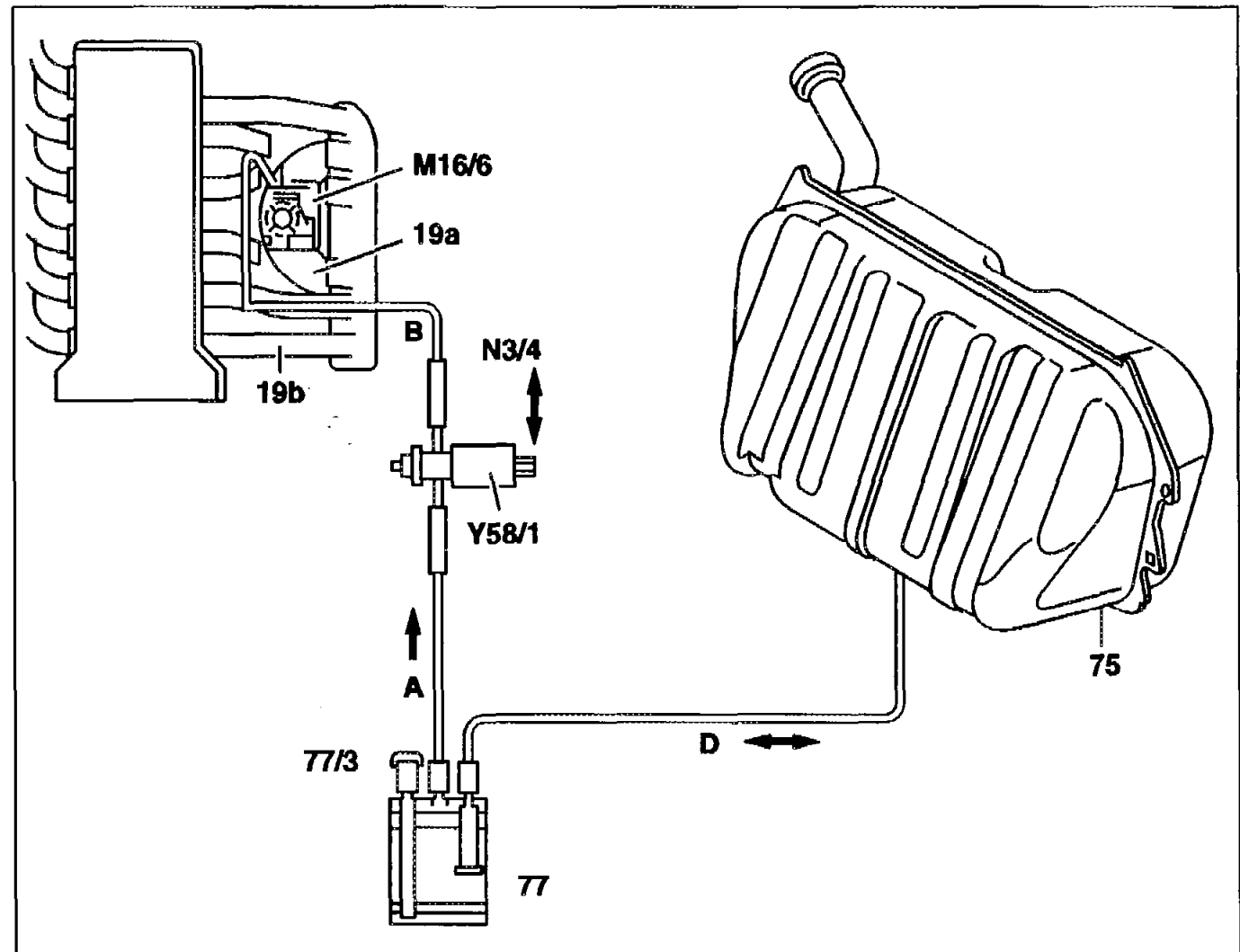
D16

AR47.30-P-8212-01DE

Connecting diagram of evaporation
emission control system

**Connecting diagram of evaporation
emission control system HFM-SFI
model 210 with engine 104**

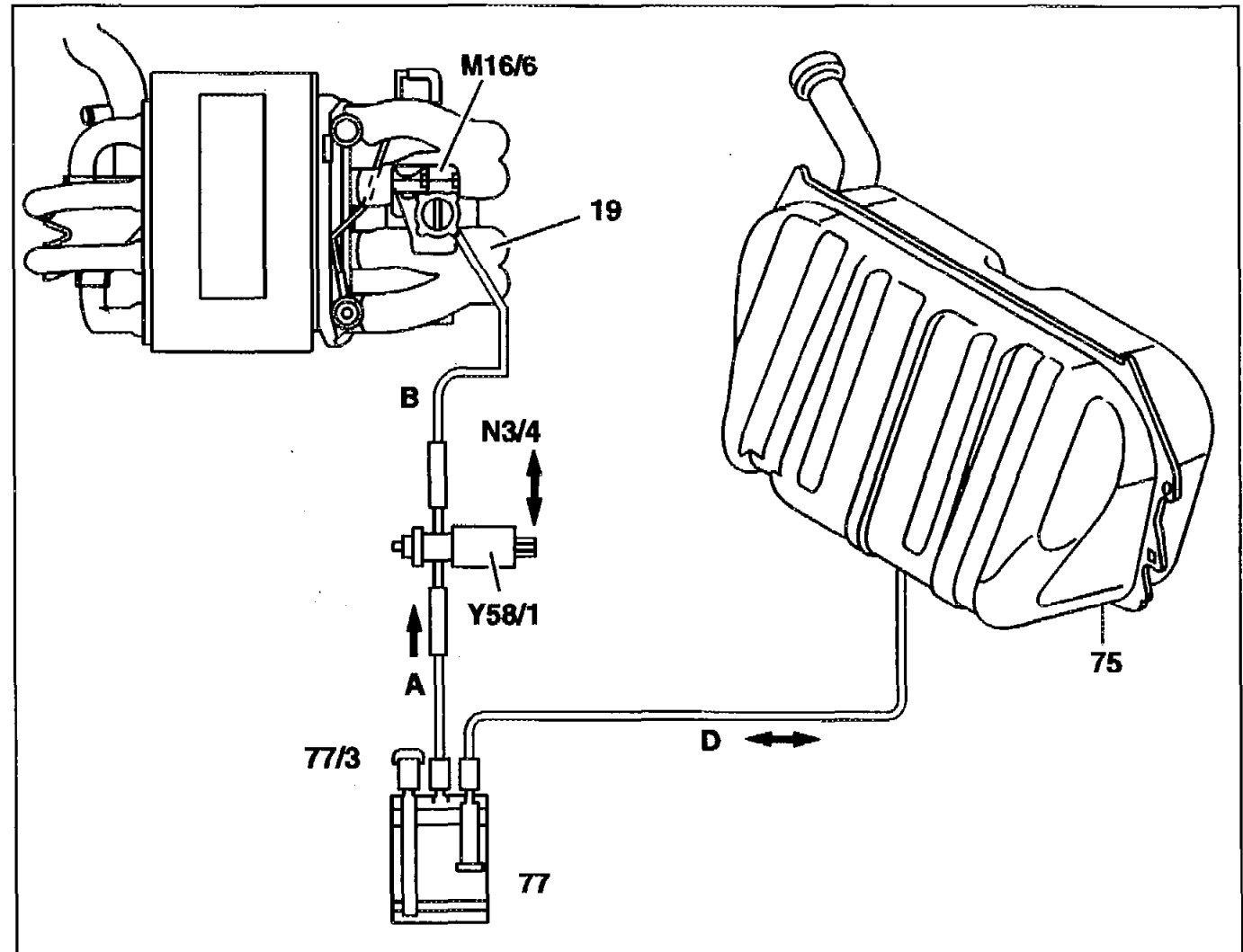
- 19a Ram intake manifold
 19b Resonance intake manifold
 75 Fuel tank
 77 Activated charcoal canister
 77/3 Air inlet cap
 M16/6 Idle speed control (ISC) actuator
 N3/4 HFM sequential multiport fuel
 injection/ignition system (HFM-SFI)
 control module
 Y58/1 Purge switchover valve
 A Activated charcoal canister/purge
 switchover valve pipe
 B Purge switchover valve/idle speed
 control actuator (ISC, M16/6) pipe
 D Vent valve/activated charcoal
 canister pipe





**Connecting diagram of evaporation
emission control system HFM-SFI
model 170, 210 with engine 111**

- 19 Intake manifold
- 75 Fuel tank
- 77 Activated charcoal canister
- 77/3 Air inlet cap
- M16/6 Idle speed control (ISC) actuator
- N3/4 HFM sequential multiport fuel injection/ignition system (HFM-SFI) control module
- Y58/1 Purge switchover valve
- A Activated charcoal canister/purge switchover valve pipe
- B Purge switchover valve/idle speed control actuator (ISC, M16/6) pipe
- D Vent valve/activated charcoal canister pipe





F16	AR47.30-P-8212-01DF	Connection diagram of evaporative emission control system	
------------	---------------------	---	--

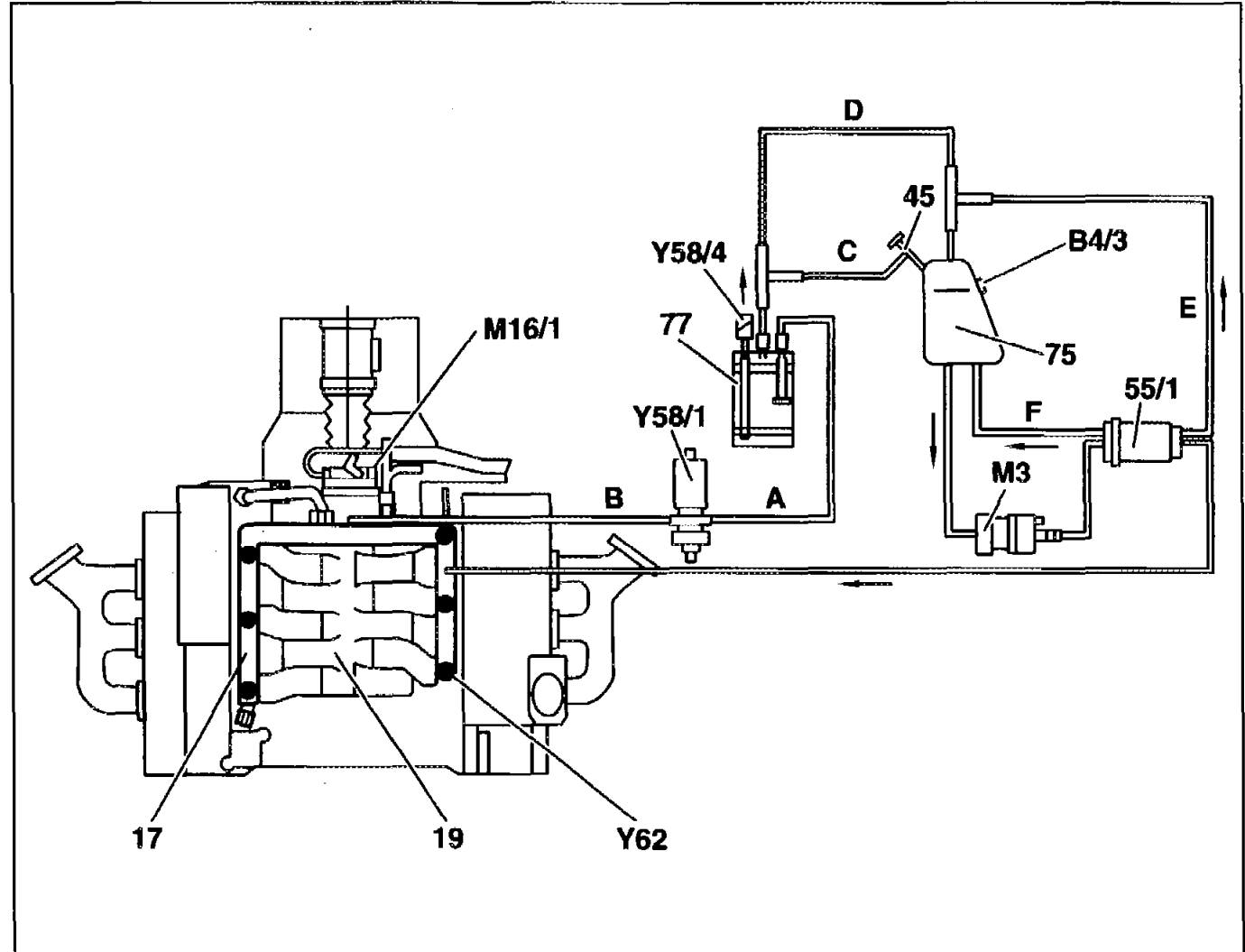
Connection diagram evaporative emission control system engine 112 (USA) version up to 09/97

- 17 Fuel rail
- 19 Intake manifold
- 45 Fuel filler neck
- 55/1 Fuel filter
- 75 Fuel tank
- 77 Activated charcoal canister

- B4/3 Pressure sensor
- M3 Fuel pump
- M16/1 Electronic accelerator actuator
- Y58/1 Purge control valve
- Y58/4 Activated charcoal canister shutoff valve
- Y62 Fuel injector

- A Activated charcoal canister - purge control valve line
- B Purge control valve - intake manifold line
- C Activated charcoal canister - fuel tank line

- D Fuel tank - activated charcoal canister line
- E Fuel filter - fuel tank degasing line
- F Fuel filter - fuel tank return flow line



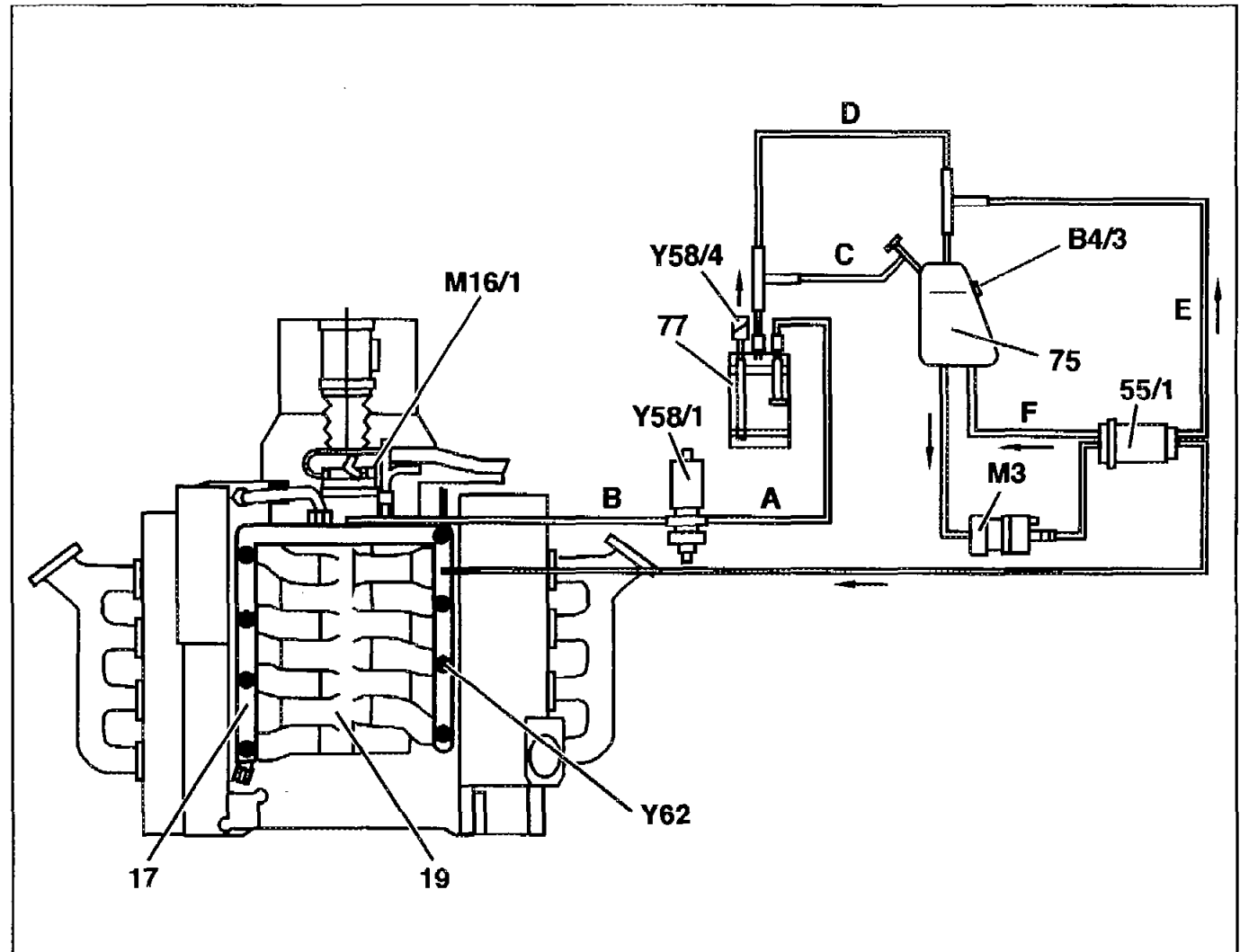
P47.30-0293-06



G16	AR47.30-P-8212-01DG	Connection diagram of evaporative emission control system	Model 210 with engine 113	
------------	---------------------	---	---------------------------	--

Connection diagram of evaporative emission control system model 113 version (USA) up to 09.97

- 17 Fuel rail
- 19 Intake manifold
- 55/1 Fuel filter with integrated fuel pressure regulator
- 75 Fuel tank
- 77 Activated charcoal filter
- B4/3 Pressure sensor
- M3 Fuel pump
- M16/1 Electronic accelerator actuator
- Y58/1 Purge control valve
- Y58/4 Purge shutoff valve
- Y62 Fuel injection valve
- A Activated charcoal filter - purge control valve pipe
- B Purge control valve - intake manifold pipe
- C Activated charcoal filter - fuel tank vent pipe
- D Fuel tank - activated charcoal filter pipe
- E Fuel tank - fuel tank degassing pipe
- F Fuel filter - fuel tank fuel return flow pipe

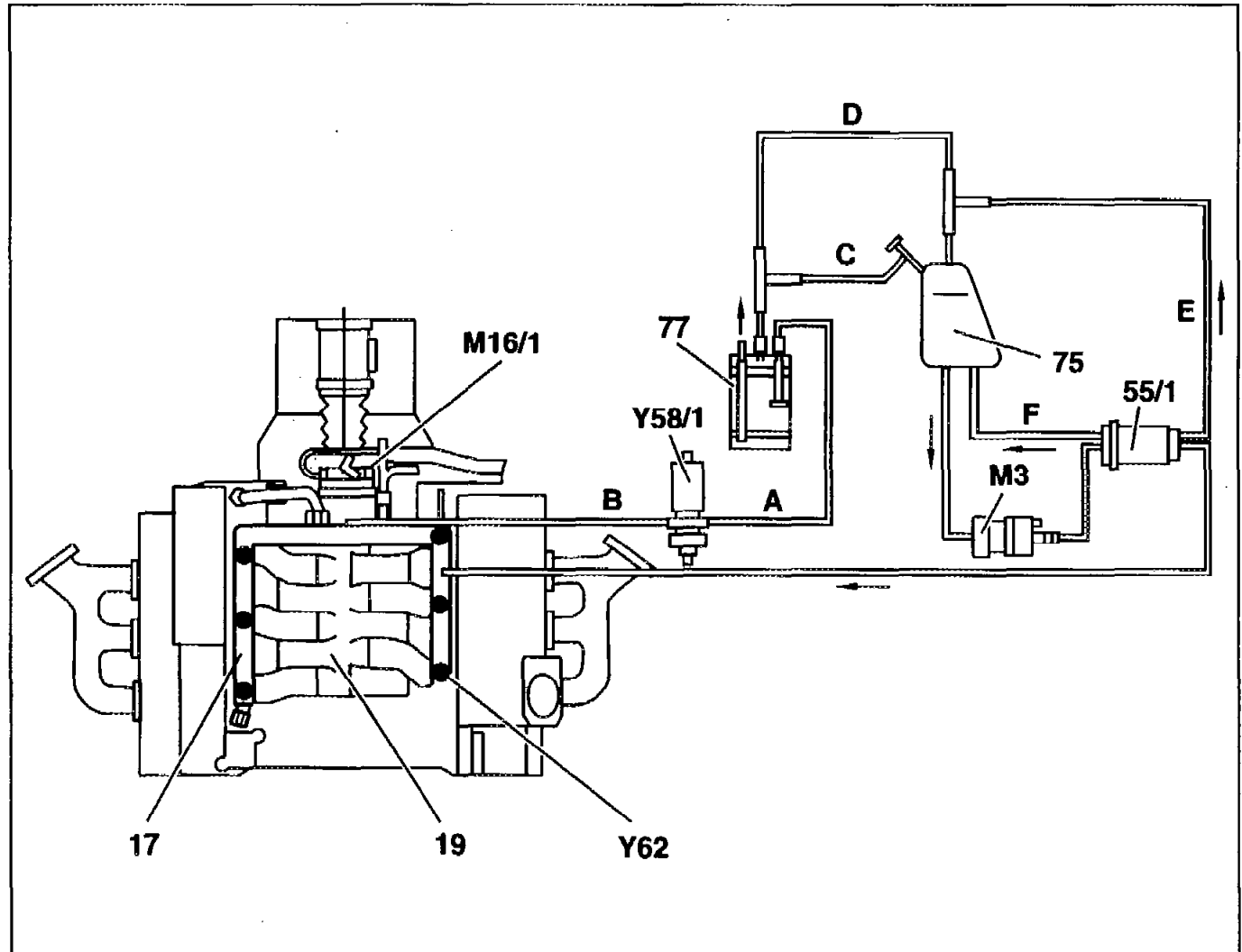




K16 AR47.30-P-8212-01DK	Connection diagram of evaporative emission control system		
--------------------------------	---	--	--

Connection diagram of evaporative emission control system engine 112 as of 09/97

- 17 Fuel rail
- 19 Intake manifold
- 45 Filler neck (with connection for collecting fuel vapors when refuelling ORVR)
- 55/1 Fuel filter
- 75 Fuel tank
- 77 Activated charcoal filter
- M3 Fuel pump
- M16/1 Electronic accelerator actuator
- Y58/1 Purge control valve
- Y62 Fuel injector
- A Activated charcoal filter - purge control valve line
- B Purge control valve - intake manifold line
- C Activated charcoal filter - fuel tank line



P47.30-2008-06

D Fuel tank - activated charcoal filter line

E Fuel filter - fuel tank degassing line

F Fuel filter - fuel tank return flow line

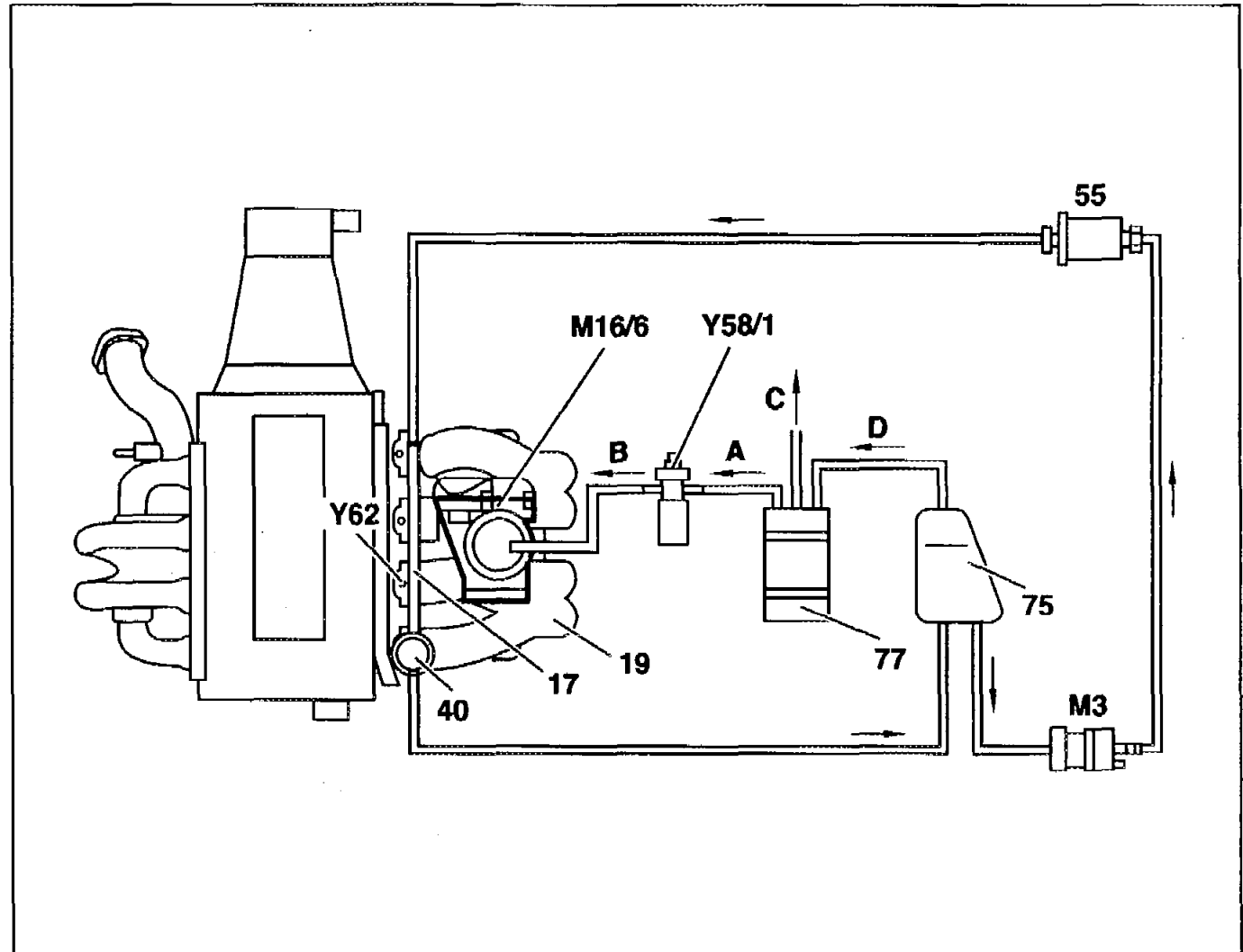
<p>L16 AR47.30-P-8212-01DL</p>	<p>Connection diagram of evaporative emission control system</p>		
---------------------------------------	--	--	--

Connection diagram
Evaporative emission control system
Engine 111.921/42/45/46/70/74
without code 923 low emission D3

- 17 Fuel rail
- 19 Intake manifold
- 40 Diaphragm pressure regulator
- 55 Fuel filter
- 75 Fuel tank
- 77 Activated charcoal canister

- M3 Fuel pump
- M16/6 Idle speed control (ISC) actuator
- Y58/1 Purge control valve
- Y62 Fuel injector

- A Activated charcoal canister - purge control valve line
- B Purge control valve - idle speed control (ISC) actuator line
- C Vent line
- D Fuel tank - activated charcoal canister line

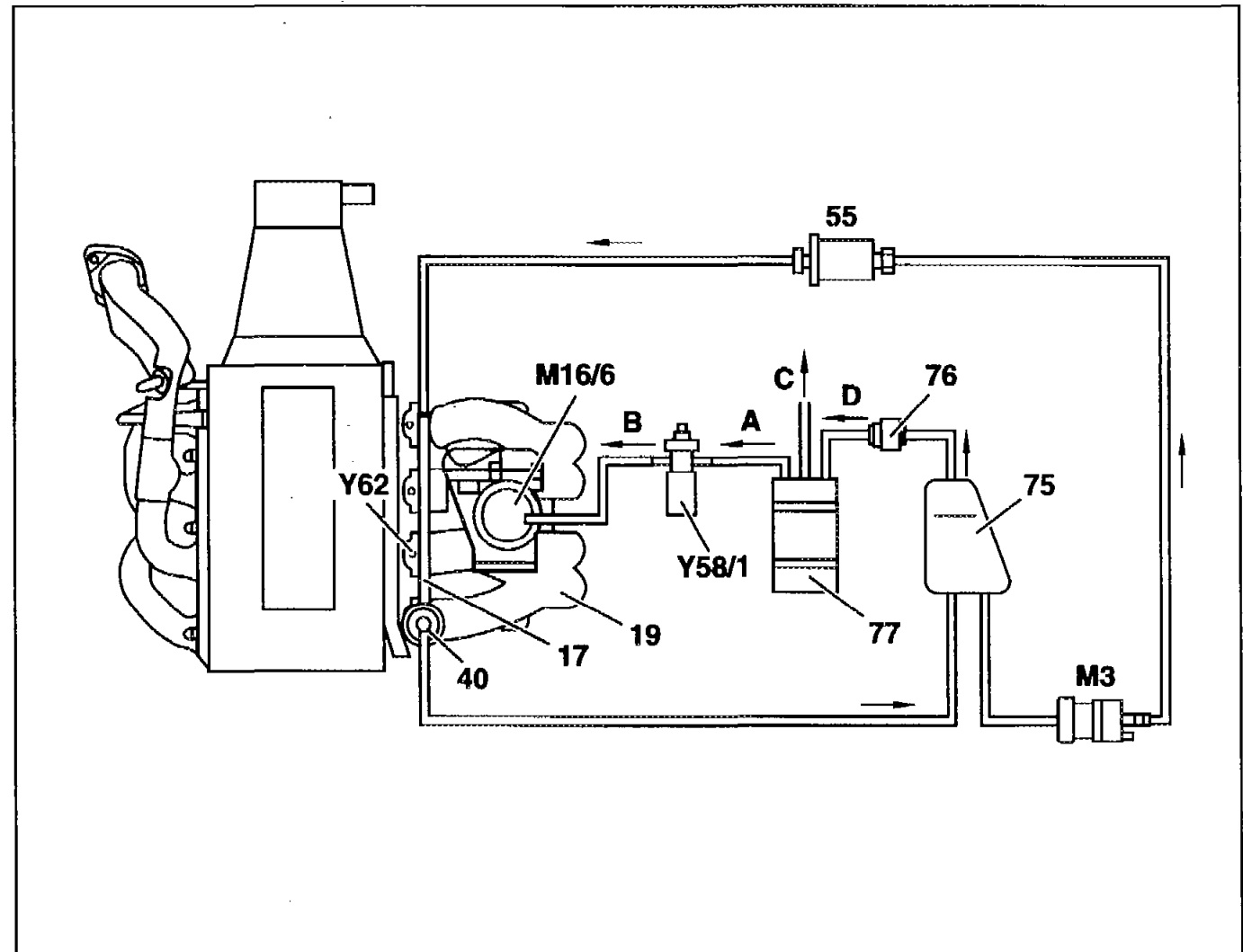


M16 AR47.30-P-8212-01DMConnection diagram of evaporative
emission control system**Connection diagram****Evaporative emission control system****Engine 111.921/42/45/46/70/74****with code 923 low emission D3**

- 17 Fuel rail
- 19 Intake manifold
- 40 Diaphragm pressure regulator
- 55 Fuel filter
- 75 Fuel tank
- 76 Vent valve (only model 170)
- 77 Activated charcoal canister
- M3 Fuel pump

- M16/6 Idle speed control (ISC) actuator
- Y58/1 Purge control valve
- Y62 Fuel injector

- A Activated charcoal canister - purge control valve line
- B Purge control valve - idle speed control (ISC) actuator line
- C Vent line
- D Fuel tank - activated charcoal canister line

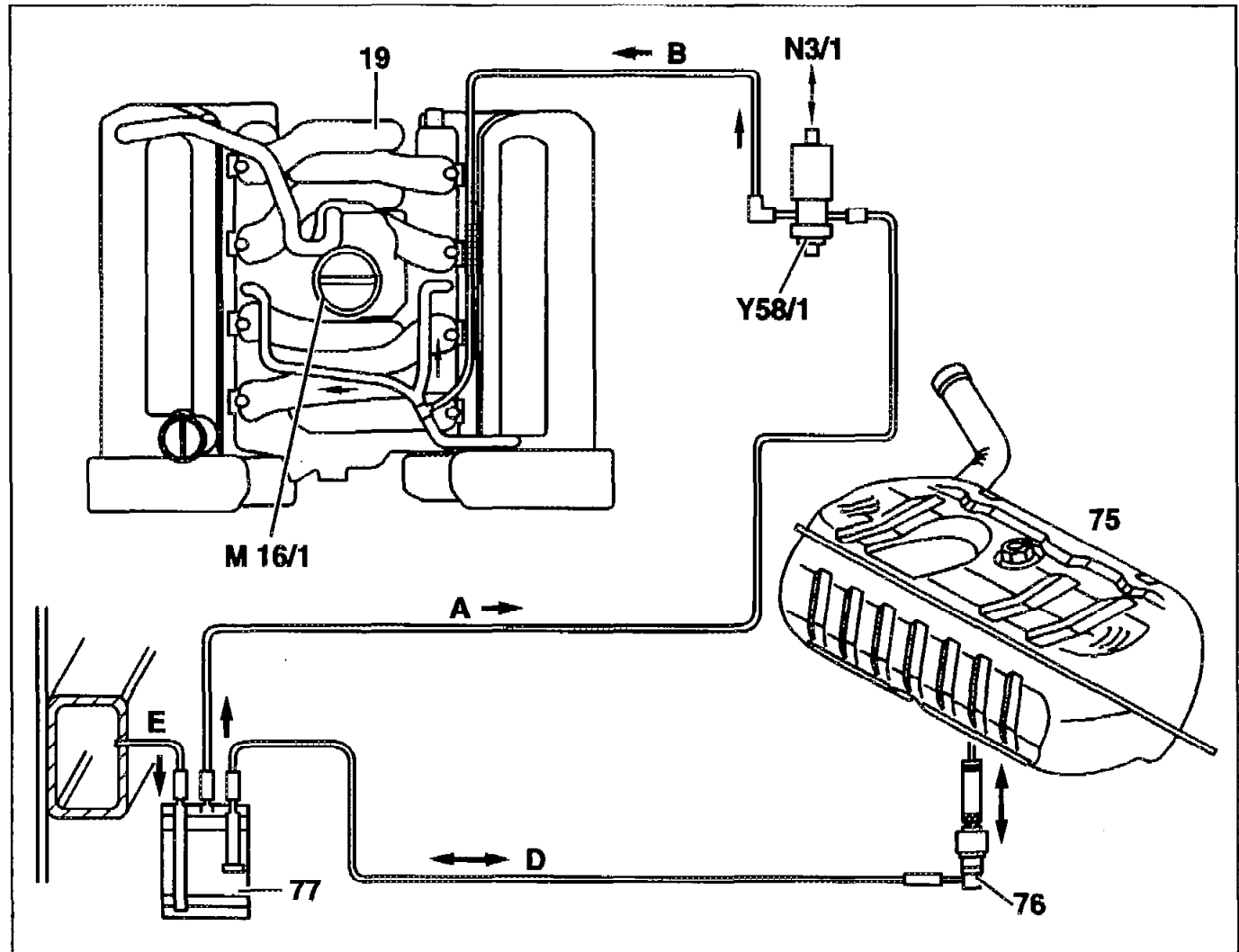




N16 AR47.30-P-8212-01EA	Connection diagram of evaporative emission control system	Engine 119.97	
--------------------------------	---	---------------	--

Connection diagram of LH-SFI evaporative emission control system model 129, 140 without skibag with engine 119.97

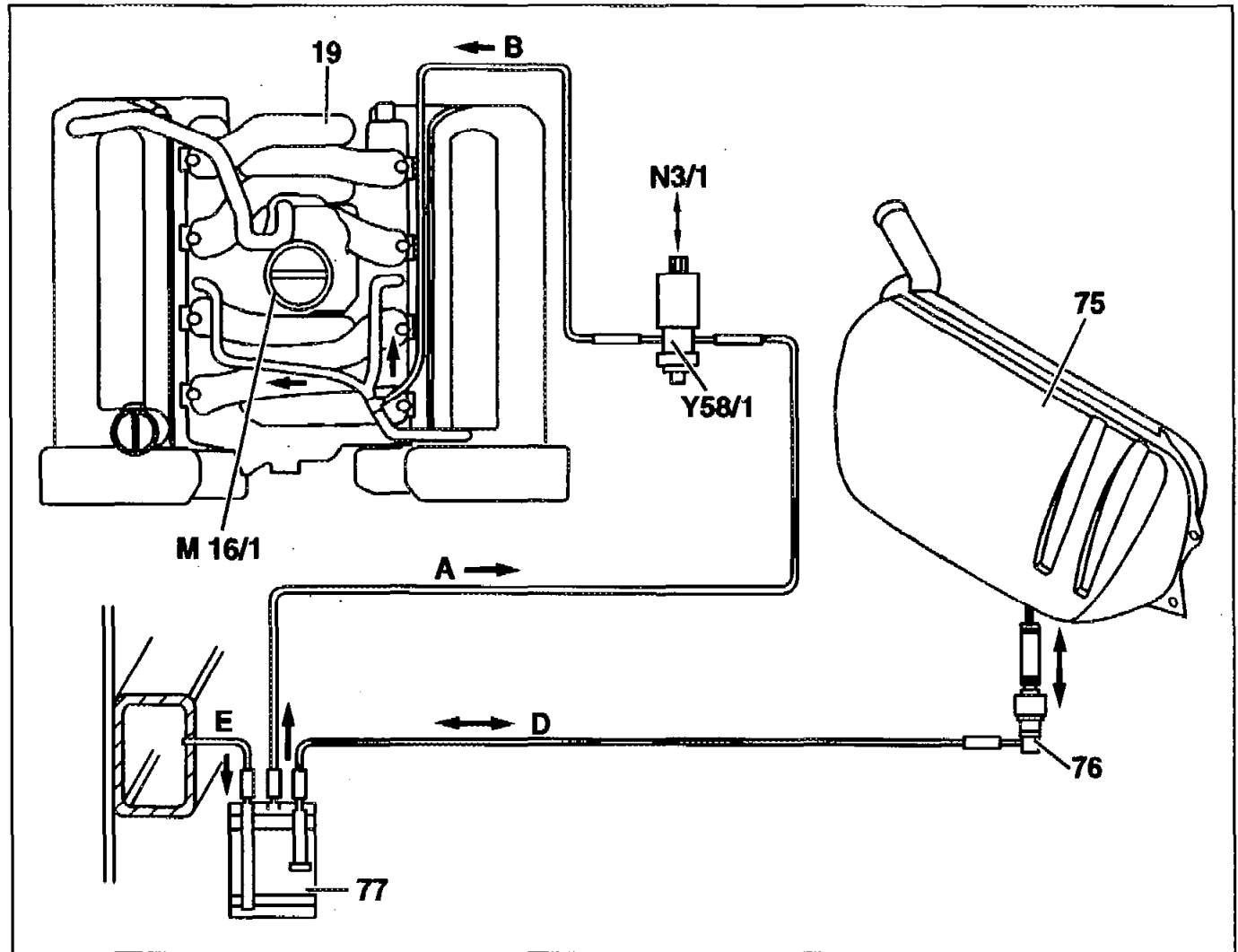
- 19 Intake manifold
- 75 Fuel tank
- 76 Vent valve
- 77 Activated charcoal filter
- M16/1 Electronic accelerator (EA)/cruise control (CC)/idle speed control (ISC) actuator
- N3/1 Air hot wire (LH-SFI) control module
- Y58/1 Purge control valve
- A Activated charcoal filter – purge control valve pipe
- B Purge control valve – actuator (M16/1) pipe
- D Vent valve – activated charcoal filter pipe
- E Vent pipe





Connection diagram of LH-SFI evaporative emission control system model 124 with engine 119.97

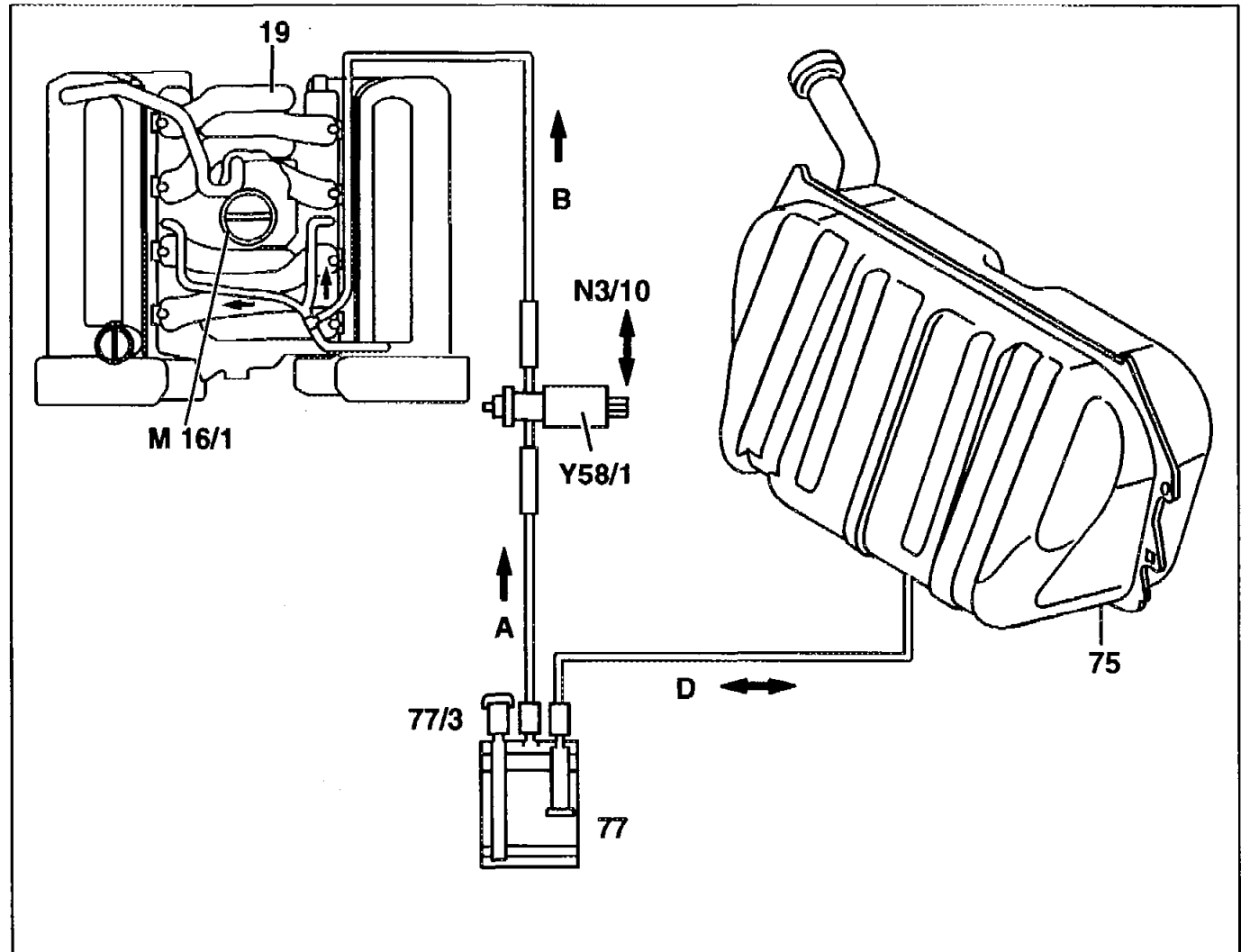
- 19 Intake manifold
- 75 Fuel tank
- 76 Vent valve
- 77 Activated charcoal filter
- M16/1 Electronic accelerator (EA)/cruise control (CC)/idle speed control (ISC) actuator
- N3/1 Air hot wire (LH-SFI) control module
- Y58/1 Purge control valve
- A Activated charcoal filter – purge control valve pipe
- B Purge control valve – actuator (M16/1) pipe
- D Vent valve – activated charcoal filter pipe
- E Vent pipe



<p>A17 AR47.30-P-8212-01EB</p>	<p>Function diagram of evaporative emission control system</p>		
---------------------------------------	--	--	--

Connection diagram of evaporative emission control system, ME-SFI model 129, 140, 210 with engine 119.98

- 19 Suction pipe
- 75 Fuel tank
- 76 Vent valve
- 77 Activated charcoal canister
- M16/1 Electronic accelerator (EA)/cruise control (CC)/idle speed control (ISC) actuator
- N3/10 Motor electronics (ME-SFI) control module
- Y58/1 Purge control valve
- A Activated charcoal canister – purge control valve pipe
- B Purge control valve – actuator (M16/1) pipe
- D Fuel tank – activated charcoal canister pipe





B17 AR47.30-P-8212-01ED	Connection diagram of evaporative emission control system		
--------------------------------	---	--	--

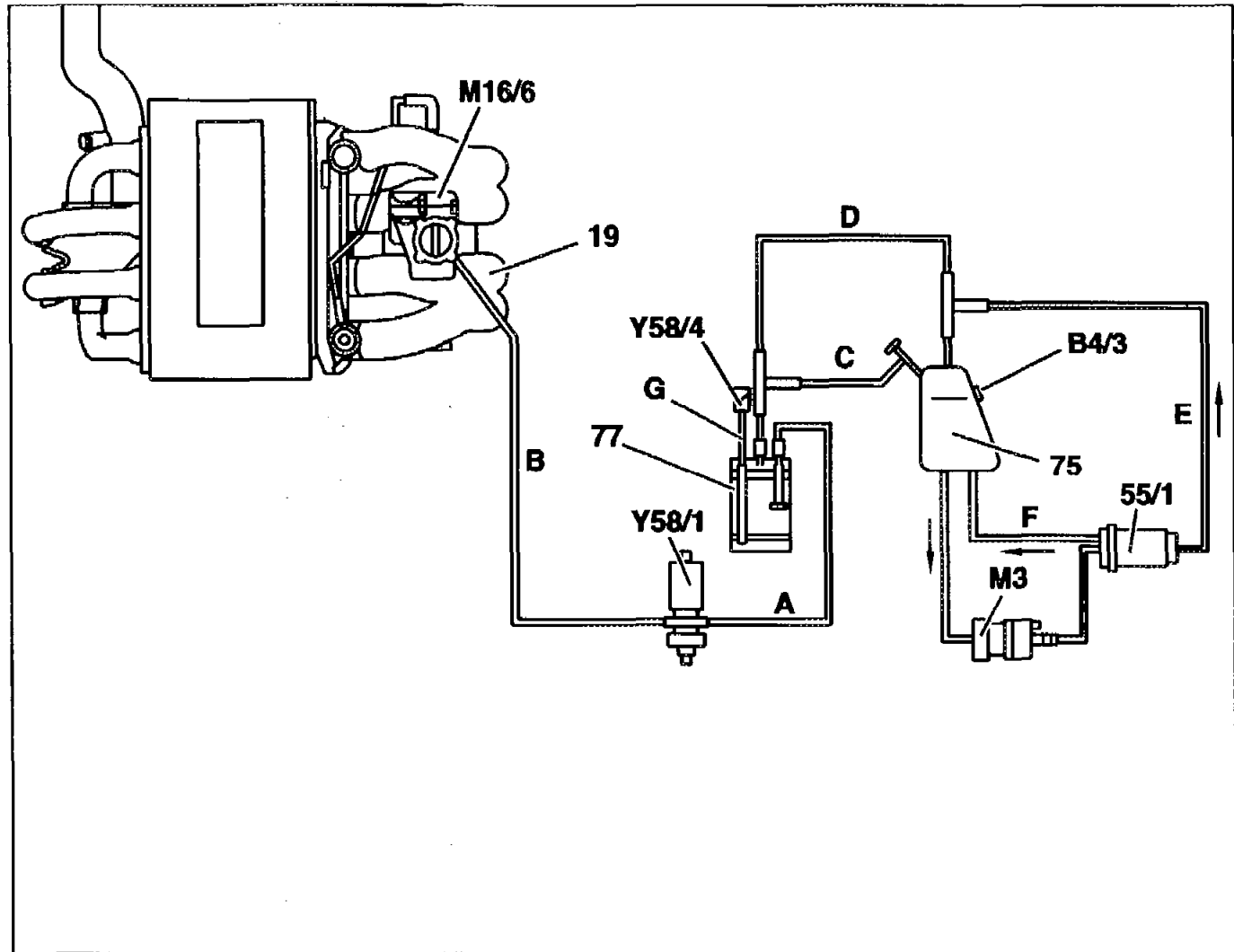
Connection diagram

Evaporative emission control system HFM-SFI

Model 170 with engine 111

Model year 98 version (USA)

- 19 Intake manifold
- 55/1 Fuel filter
- 75 Fuel tank
- 77 Activated charcoal canister
- B4/3 Pressure sensor
- M3 Fuel pump
- M16/6 Idle speed control (ISC) actuator
- Y58/1 Purge control valve
- Y58/4 Activated charcoal canister shutoff valve



- A Activated charcoal canister - purge control valve line
- B Purge control valve - idle speed control (ISC) actuator line
- C Activated charcoal canister - fuel tank line
- D Fuel tank - activated charcoal canister line
- E Fuel filter - fuel tank degassing line

F Fuel filter - fuel tank return flow line

G Activated charcoal canister - activated charcoal canister shutoff valve line