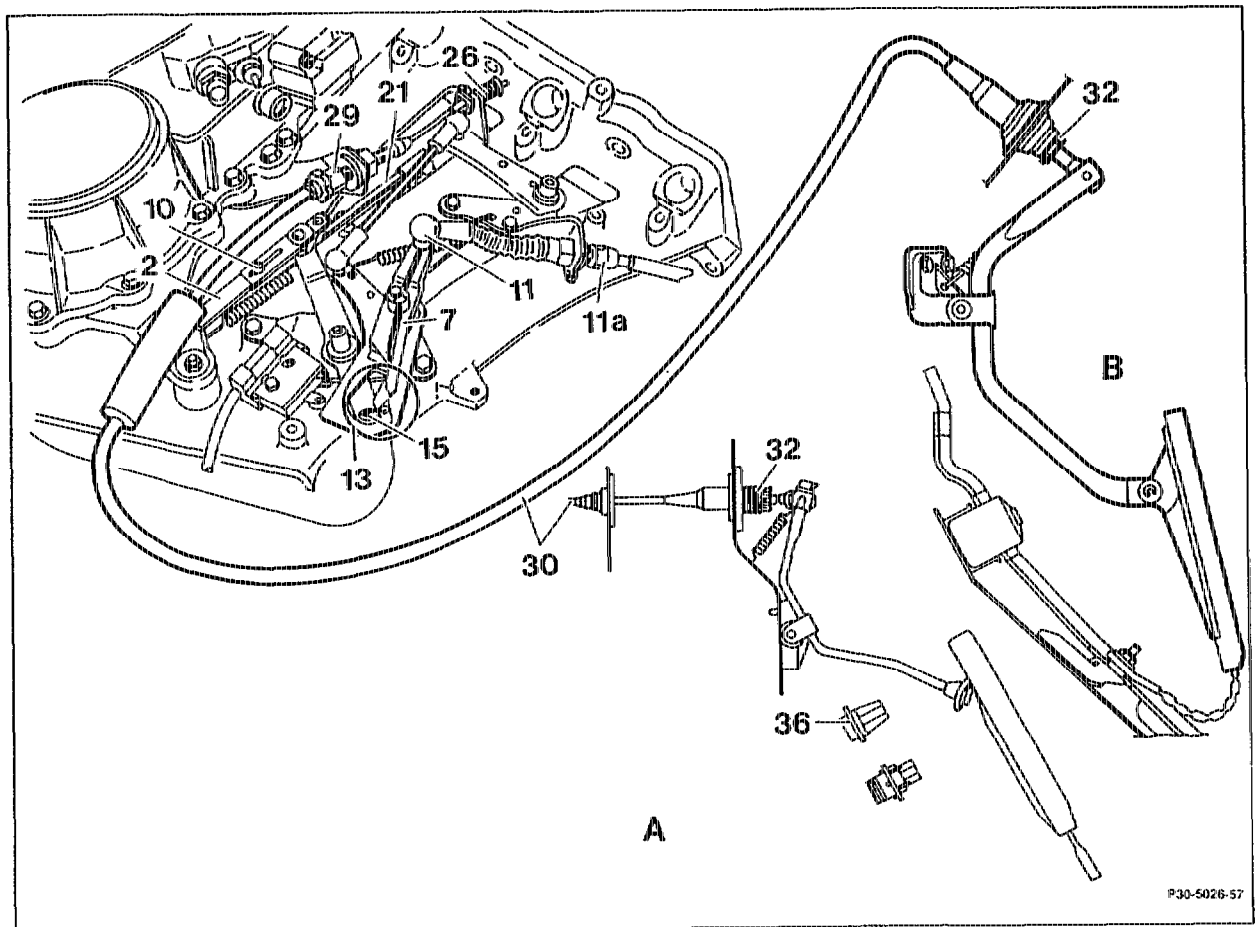


30-1010 Adjusting throttle control

Operation No. of operation texts and work units or standard texts
and flat rates:
30-1010

A. Vehicles with manual/automatic transmission and with/without Tempomat/cruise control



A Model 124
B Model 129

Throttle control linkage and Bowden cable check for ease of movement and condition;
renew parts if necessary.



If vehicle fitted with cruise control, check position of hose clip for oil-to-water heat exchanger. The throttle control linkage must have sufficient clearance.

Bowden cable (30)	slacken by turning adjusting screw (29) far enough for the follower spring (26) to be resting free of tension.
Connecting rod (2)	adjust by slackening clamping screw (10). Throttle valve lever must be resting against idle speed stop of throttle valve assembly. Adjust connecting rod (2) so that the roller (15) in the fulcrum lever (13) is resting "free of tension" against idle speed stop. Tighten clamping screw (10).
Tempomat/cruise control setting	check, correct if necessary by moving throttle valve lever to idle speed stop, detaching connecting rod (21) at throttle valve lever and pressing actuator lever toward engine as far as the stop in idle position. Adjust connecting rod (21) so that the actuator lever must be pulled back 1 mm from idle speed stop for attaching.
Control pressure Bowden cable (11)	adjust by altering position of adjusting screw (11a) until the arrow tips (circle) are exactly opposite.
Bowden cable (30)	adjust.

a) Full throttle, manual transmission

Depress accelerator pedal slowly into full throttle position. The throttle valve lever must be resting against full throttle end stop. If necessary, release adjustable full throttle stop (36) by turning to the left and withdraw stop pin slightly. Lock adjustable full throttle stop (36) in the position it has adopted by turning to the right.

b) Full throttle, automatic transmission

With engine switched off, depress accelerator pedal from inside car as far as the stop on the kickdown switch (S30/2) (do not operate kickdown switch!).

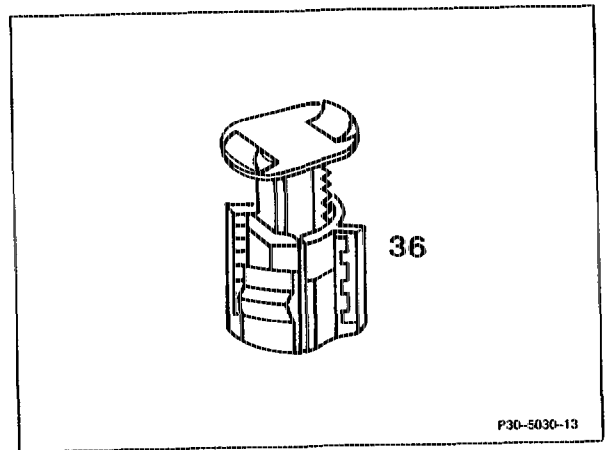
The throttle valve lever must be 0.5–1.0 mm away from full throttle stop on throttle valve body; set with adjusting screw (29), if necessary.

c) Idling

When accelerator pedal is in idle position, the follower spring (26) must be resting free of play; set from inside car with adjusting nut (32), if necessary.

Bowden cable (30)

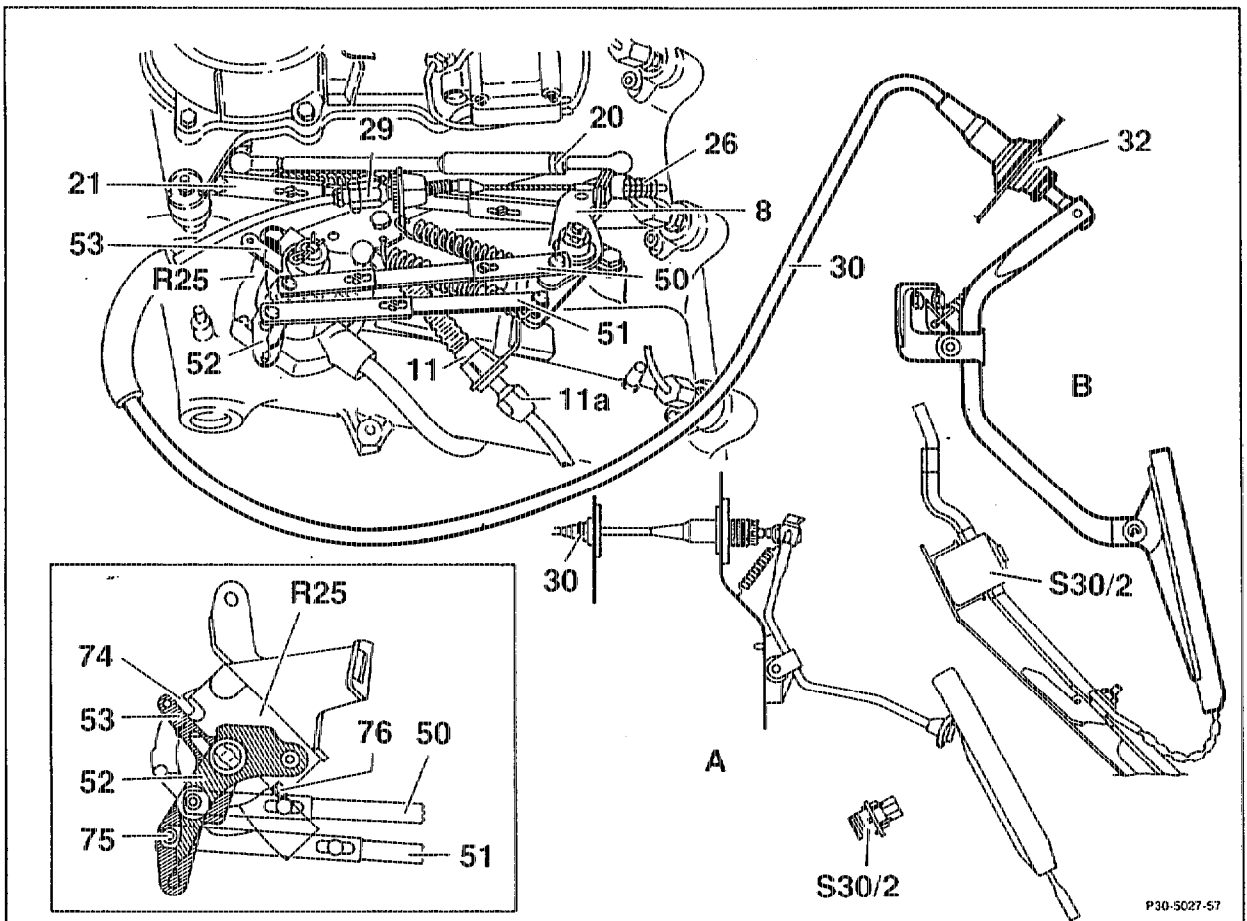
grease between end piece and guide piece with anti-corrosion grease 000 989 87 51 10.



Adjustable full throttle stop, manual transmission

P30-5030-13

B. Vehicles with automatic transmission and acceleration skid control (ASR)



A Model 124
 B Model 129

- | | |
|---|---|
| Throttle control linkage and Bowden cable | check for ease of movement and condition, replace parts if necessary. |
| Bowden cable (30) | slacken by altering position of adjusting screw (29) until the follower spring (26) is resting free of tension. |
| Connecting rod (21) | adjust by slackening clamping screws at connecting rod (21) and at the connecting rods (50 and 51). Throttle valve lever must be resting against idle stop of throttle valve assembly.
Switch on Ignition.
Actuator lever adopts "idle speed position" as a result. Now fix length of connecting rod (21) by tightening the clamping screw.
Switch off Ignition. |

Connecting rods (50) and (51) adjust by moving lever (52) and lever (53) to the respective "idle speed stop" (74 and 75) at potentiometer (R25).



The levers must not move away from the idle speed stops during the adjustment.

Swivel lever (8) clockwise until connecting rod (20) is fully pulled apart.

Pull connecting rod (50) apart until the idle travel is eliminated. Tighten clamping screw.

Then, tighten clamping screw of connecting rod (51).

Note

Effective May 1990 the connecting rod (50) can no longer be adjusted.

Control pressure Bowden cable (11) adjust by altering position of adjusting screw (11a) until the arrow tips (enlarged cutout) are exactly opposite.

Bowden cable (30) adjust.

a) Full throttle

Switch on ignition.

With engine switched off, depress accelerator pedal from inside car as far as the stop on kickdown switch (S30/2) (do not operate kickdown switch!). The lever (53) must be resting against "full throttle stop" (76) of the potentiometer (R25) "free of tension"; set with adjusting screw (29), if necessary.

b) Idling

Switch on ignition.

With accelerator pedal in idle position, the follower spring (26) must be resting free of tension; set from inside car with the adjusting nut (32), if necessary.

Bowden cable (30) grease between end piece and guide piece with anti-corrosion grease 000 989 87 51 10.