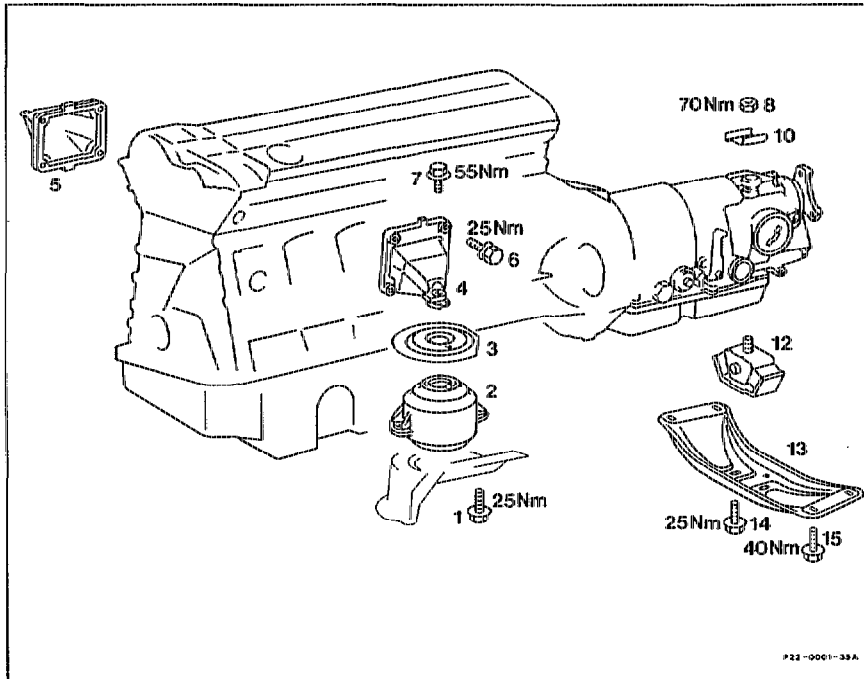


22-2110 Removing and installing front engine mounts

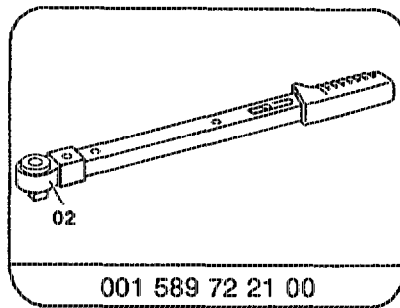
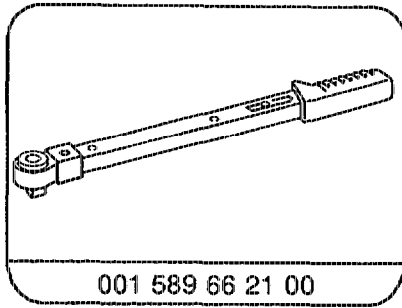
Operation no. of operation texts and work units or standard texts
and flat rates:
22-1260-1700

A. Models 124, 129, 140



Ground cable at battery	disconnect, connect.
Intake air scoop	remove, install (09-0060).
Models 124, 129:	take off fan shroud ring and fan shroud, fit on (20-3400).
Bottom engine compartment panel	remove, install.
Bolts (1)	unscrew, screw on, tightening torque 25 Nm.
Engine	raise, lower.
Bolts (7)	unscrew, screw on, tightening torque 55 Nm.
Engine mounts (2) and shield (3)	remove, install, pay attention to installation note.

Special tools



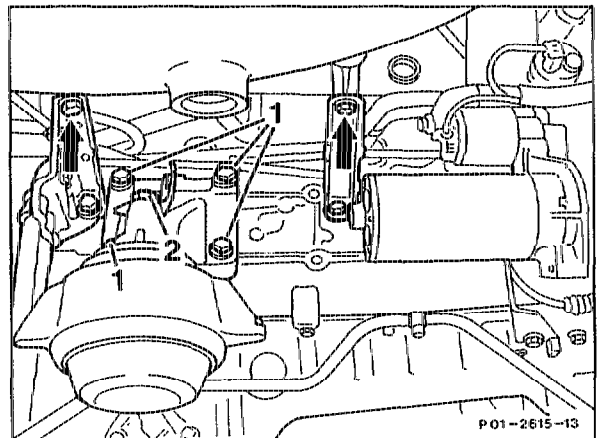
Installation note

Engine mounts (2) and shields (3) on the left and right are identical.

The anti-twist lock (pin) in the engine mount (2) must be inserted into the hole in the shield (3) and into the retaining slot in the engine carriers (4 or 5).

Model 140

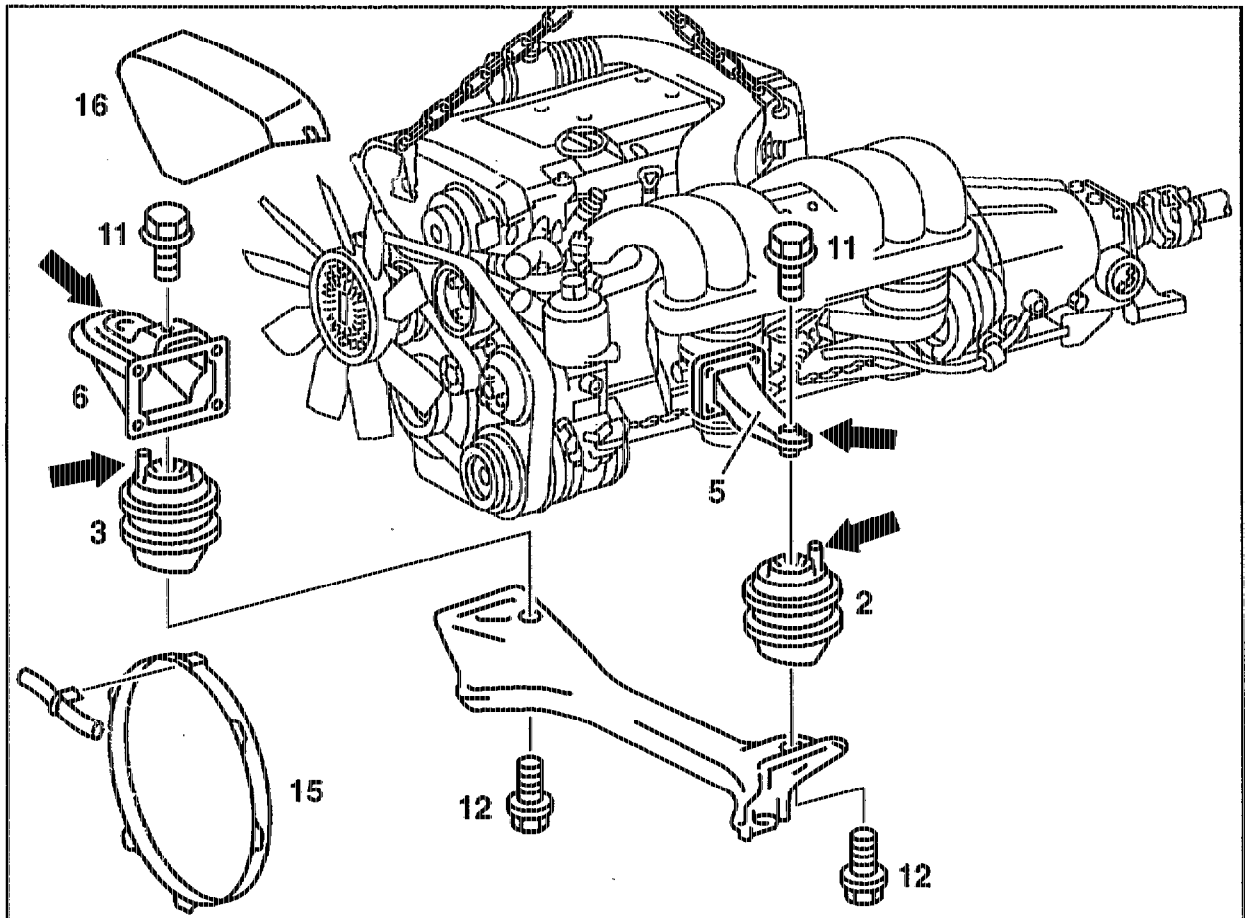
Remove left engine mount together with engine carrier. Unscrew securing bolts (1). Push high pressure hose of tandem pump up and out.



B. Models 202, 210

Preceding work:
Bottom engine compartment panel removed
(Maintenance Manual Volume 2, Op. no. 6190).

Operation no. of operation texts and work units or standard texts
and flat rates:
01-1260



P22-5059-57

Cover (16)	remove, install.
Model 202:	take off fan shroud (15), place over fan, install (20-3400).
Model 210:	take off fan shroud, place over fan, install (20-3400).
Exhaust at exhaust manifold and transmission intermediate bearing	unbolt, bolt on (49-7000).
Bolts (11) at top	unscrew, screw on (55 Nm).
Engine	raise at front lifting lug.
Bolts (12) at bottom	unscrew, screw on.

Engine mounts (2) and (3) remove, install.

Note

The anti-twist locks (arrows) in the engine mounts (2) and (3) must engage in the retaining slots in the engine carriers (5) and (6) (arrows).