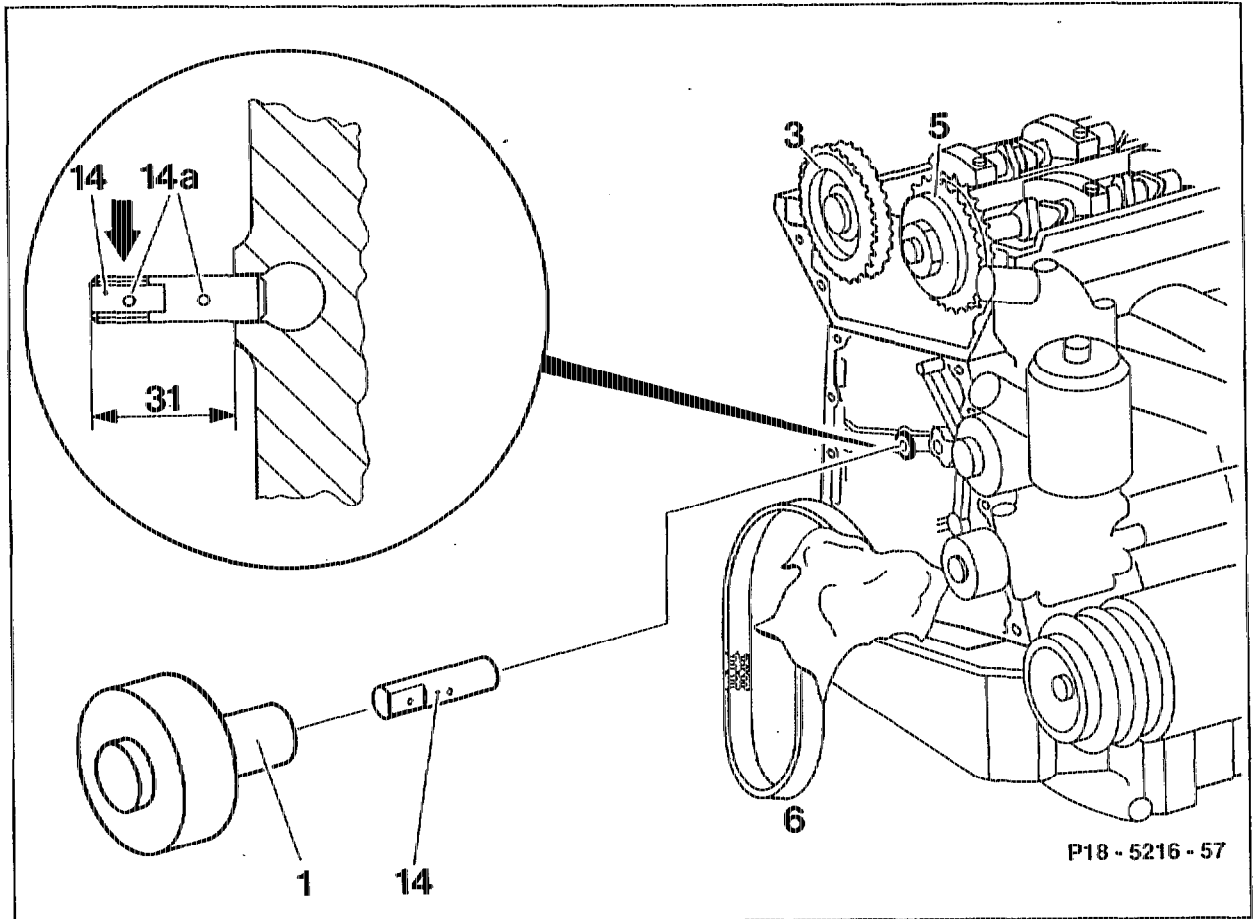


18-4100 Removing and installing oil spray nozzle for timing chain, engine 104.94/99

Preceding work:

Timing case cover removed (01-2100).

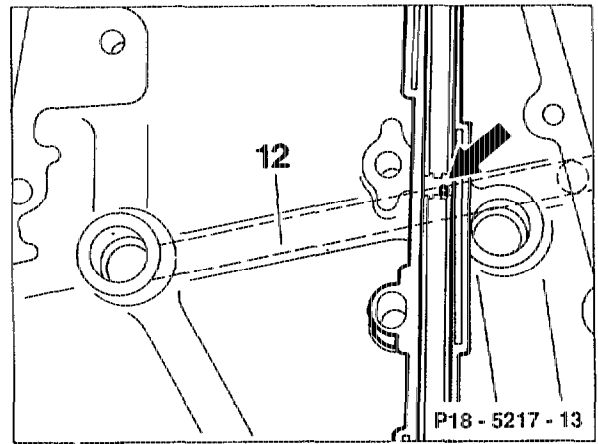
Guide rail removed (05-3350).



- | | |
|--|--|
| Timing chain (6) at camshaft sprockets (3 and 5) . | lift off, fit on, pay attention to coloured marking. |
| Crankshaft sprocket and oil sump | cover over with clean cloth. |
| M5 thread (arrow) | tap on oil nozzle (14) approx. 8 mm deep. |
| Oil nozzle (14) | remove with impact extractor (1)
116 589 20 33 00. |
| New oil nozzle (14) | knock in with plastic-headed hammer,
projection = 31 mm |
| Both drillings (14a) (oil spray direction) | must be positioned in oil nozzle (14) vertical to
timing chain (6) (flat face on oil nozzle (14) at
front parallel to timing chain). |

Note re engine 104.98

The timing chain is sprayed with oil through a connection in the oil transverse gallery (12) and a drilling (arrow) in the guide rail.



Production breakpoint: July 1990

Model	Engine	Engine end no. manual transmission	Engine end no. automatic transmission
124.031 124.051 124.091	104.980	002876	012945
129.061	104.981	000562	005460