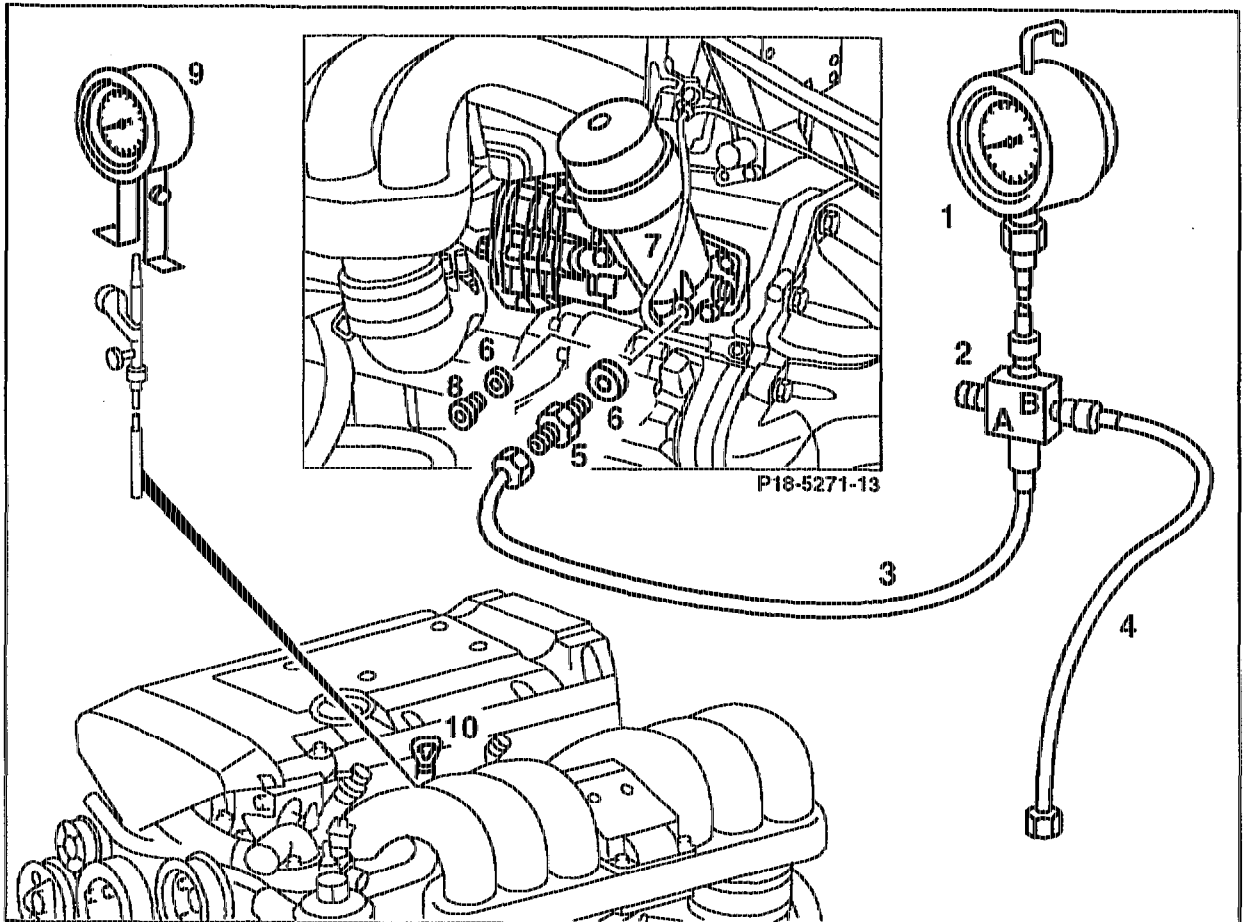


A. Testing oil pressure through connection drilling at oil filter



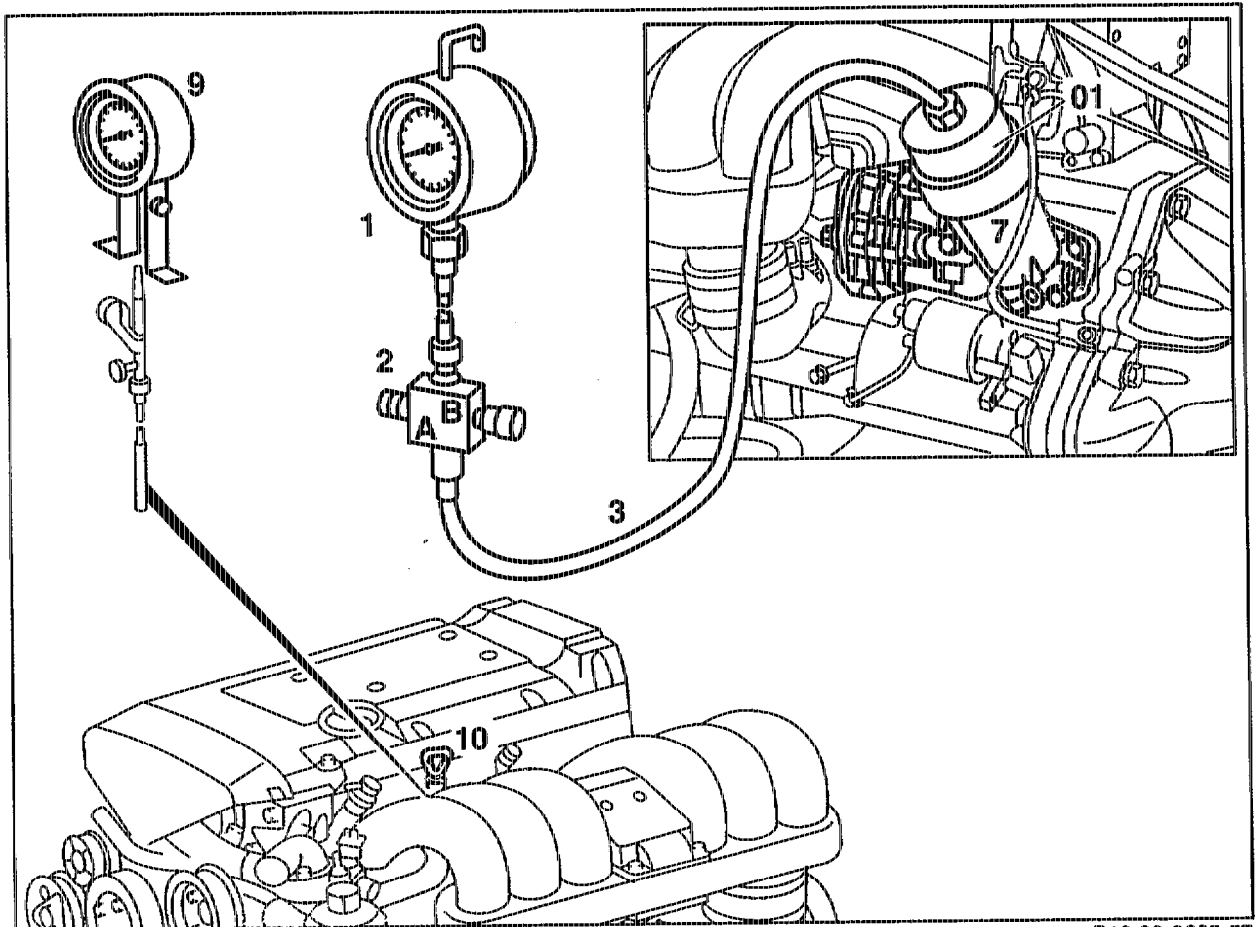
P18-5270-57

- | | | | |
|---|---|---|-------------------------------------|
| 1 | 0 – 10 bar pressure gauge 103 589 00 21 00 | 6 | Aluminium seal |
| 3 | Pressure pipe | 7 | Oil filter |
| 5 | M12×1.5 DIN connection fitting
915 006 004 002, alternatively M10×1 –
M12×1.5 DIN adaptor fitting 915 007 004 001 | 8 | Screw plug |
| | | 9 | Remote thermometer 124 589 07 21 00 |

- | | |
|--|---|
| Screw plug (8) with seal (6) | detach from oil filter (7), attach (15 Nm). |
| Connection fitting or adaptor fitting (5)
with seal (6) | attach to oil filter (7), detach (15 Nm). |
| Pressure pipe (3) | attach to connection fitting or adaptor fitting (5),
detach. |
| T valve (2) | close (turn to close). |
| Oil level | check, adjust to correct level. |
| Dipstick (10) | remove, install. |

Temperature sensor of remote thermometer (9)	insert into dipstick guide tube.
124 589 07 21 00	
Engine	run. Check oil pressure at stated engine speeds and temperatures, see table.

B. Testing oil pressure through oil filter cap



P18.00-0265-57

Oil filter cap	unscrew, screw on. (18-0020).
Oil filter element	replace.
Oil filter cap (01)	screw onto test connection (shop-made tool) (20 Nm).
Delivery pipe (3)	fit onto test connection, disconnect.
T valve (2)	close.
Oil level	check, adjust to correct level.
Dipstick (10)	remove, install.

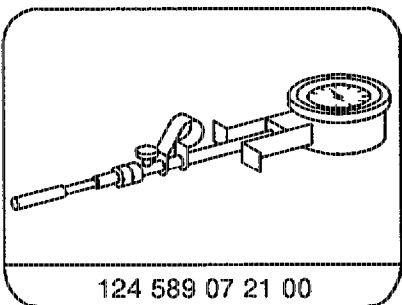
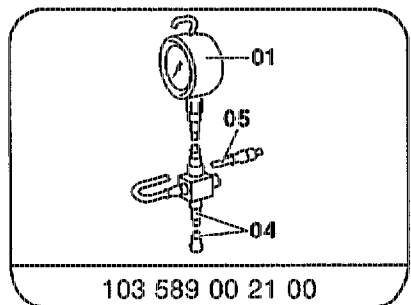
Temperature sensor of remote thermometer (9) 124 589 07 21 00
 Engine

insert into dipstick guide tube.
 run and check oil pressure at stated engine speeds and temperatures; see table.

Engine speeds in rpm	Engine oil pressure in bar at oil temperature of about 80 °C ¹⁾
600 – 750	approx. 1.3
1000	approx. 2.2
2000	approx. 4.8
3000	approx. 5.1
4000	approx. 5.3

1) Oil filter element replaced

Special tools



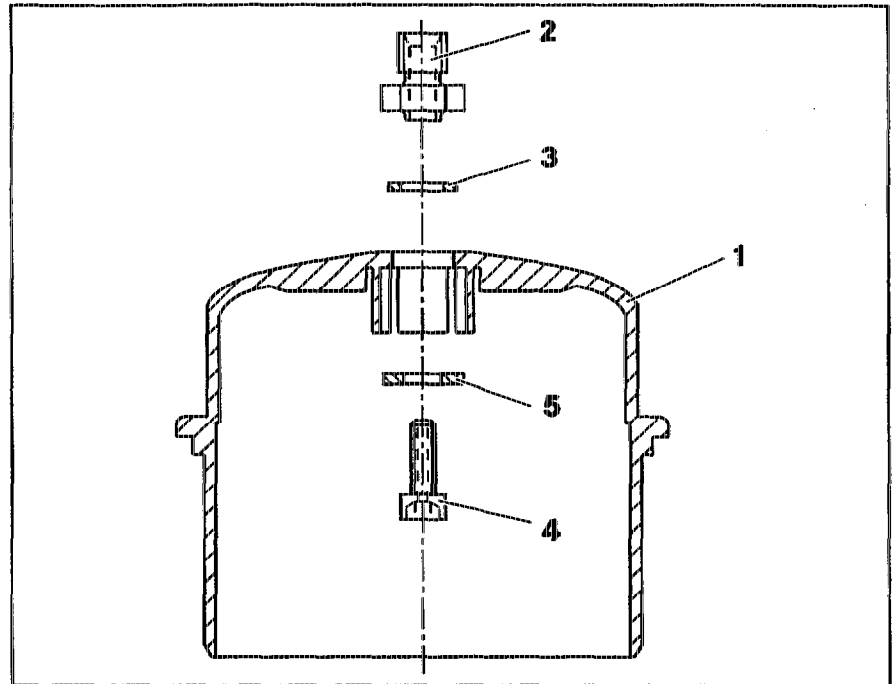
Commercially available tools

M12 × 1.5 connection fitting (5)	915 006 004 002 (DIN)
M10 × 1 – M12 × 1.5 adapter fitting (5)	915 007 004 001 (DIN)

Shop-made tool

Oil filter cap with test connection

- 1 Drill \varnothing 8 mm hole in center of oil filter cap (1).
- 2 Hollow-drill hexagon socket bolt (4) \varnothing 2 mm.
- 3 Tap M6 thread in connection fitting (2).
- 4 Screw connection fitting (2) with seals (3, 5) onto oil filter cap (1) with hexagon socket bolt (4).



P58.50-0205-35

- 1 Oil filter cap, part no. 104 184 06 08
- 2 Connection fitting M12 \times 1.5 DIN no. 915 006 004 002
- 3 Aluminium seal 12 \times 17
- 4 Hexagon socket bolt M6 \times 12
- 5 Washer 6.5 \times 18