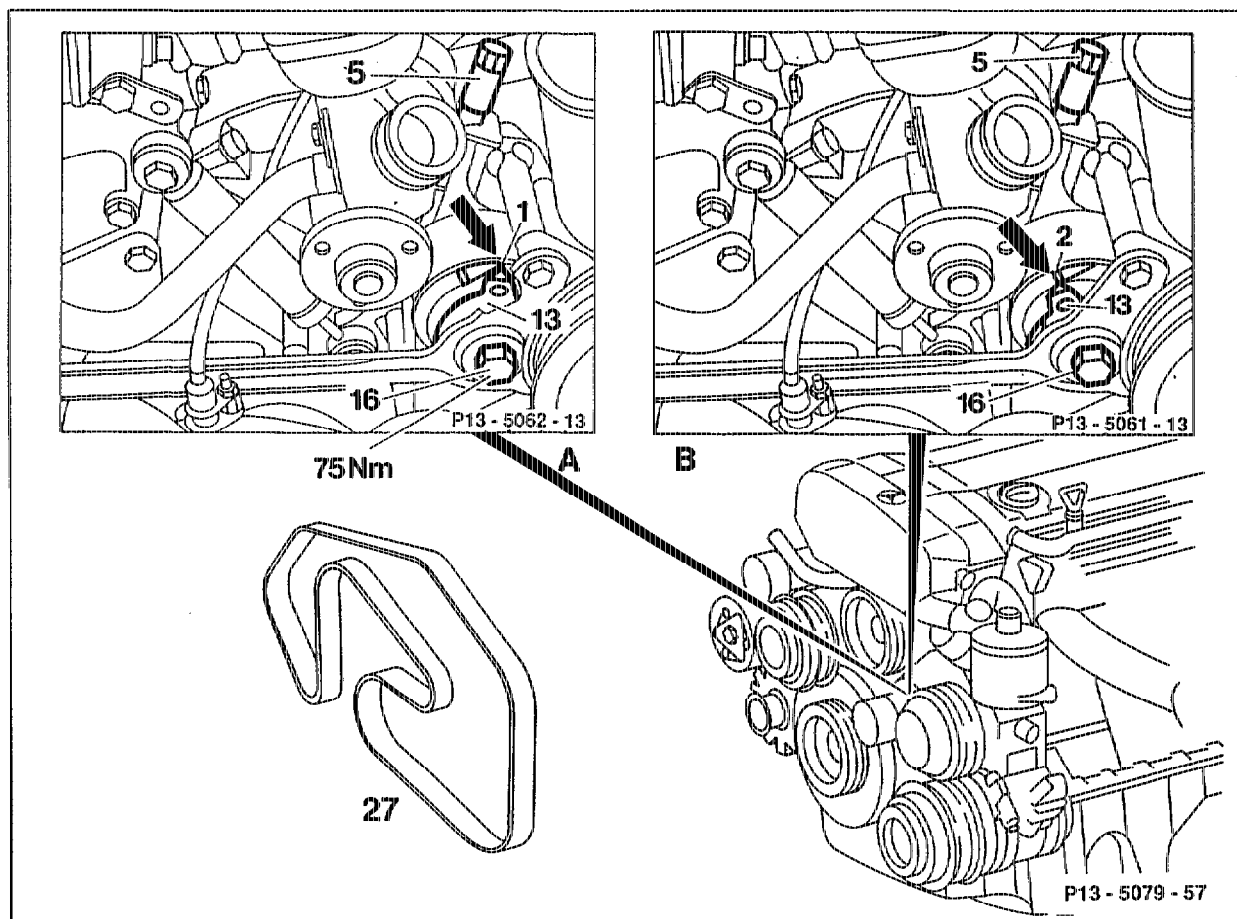


## 13-1200 Removing and installing poly V-belt

Preceding work:  
Viscous fan clutch removed (20-3120).

Operation no. of operation texts and work units or standard texts  
and flat rates  
13-1202 - 13-4001

### 1st version with external damper



- A Setting pointer (13) to marking (1) = poly V-belt untensioned  
B Setting pointer (13) to marking (2) = poly V-belt tensioned

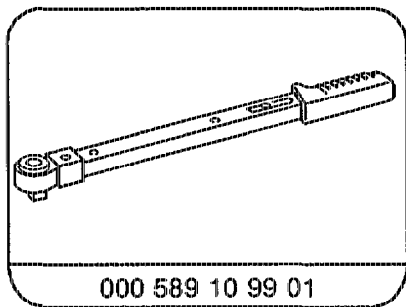
Bolt (16) .....	slacken approx. 1/4 - 1/2 turns.
Tensioning nut (5) .....	slacken (turn to the left).
Poly V-belt (27) .....	take off.
Belt pulley .....	examine for signs of damage and dirt, replace if necessary (e. g. worn bearing points of tensioning device, dents in belt pulleys etc.).
Setting pointer (13) .....	turn to marking (1) (arrow).

Poly V-belt .....	fit on, beginning at tensioning pulley (running diagrams see 13--1240).
	⚠
	Do not use belt wax or similar products except, if noise problems exist, spray poly V-belt lubricant 000 989 19 60 onto belt running surface and onto back of belt.
Tensioning nut (5) .....	tension until setting point (13) is aligned with the marking (2) (arrow).
Bolt (16) .....	tighten (75 Nm).
Seat of belt on belt pulleys .....	examine.

**Tightening torque in Nm**

Securing bolt of tensioning device	75
------------------------------------	----

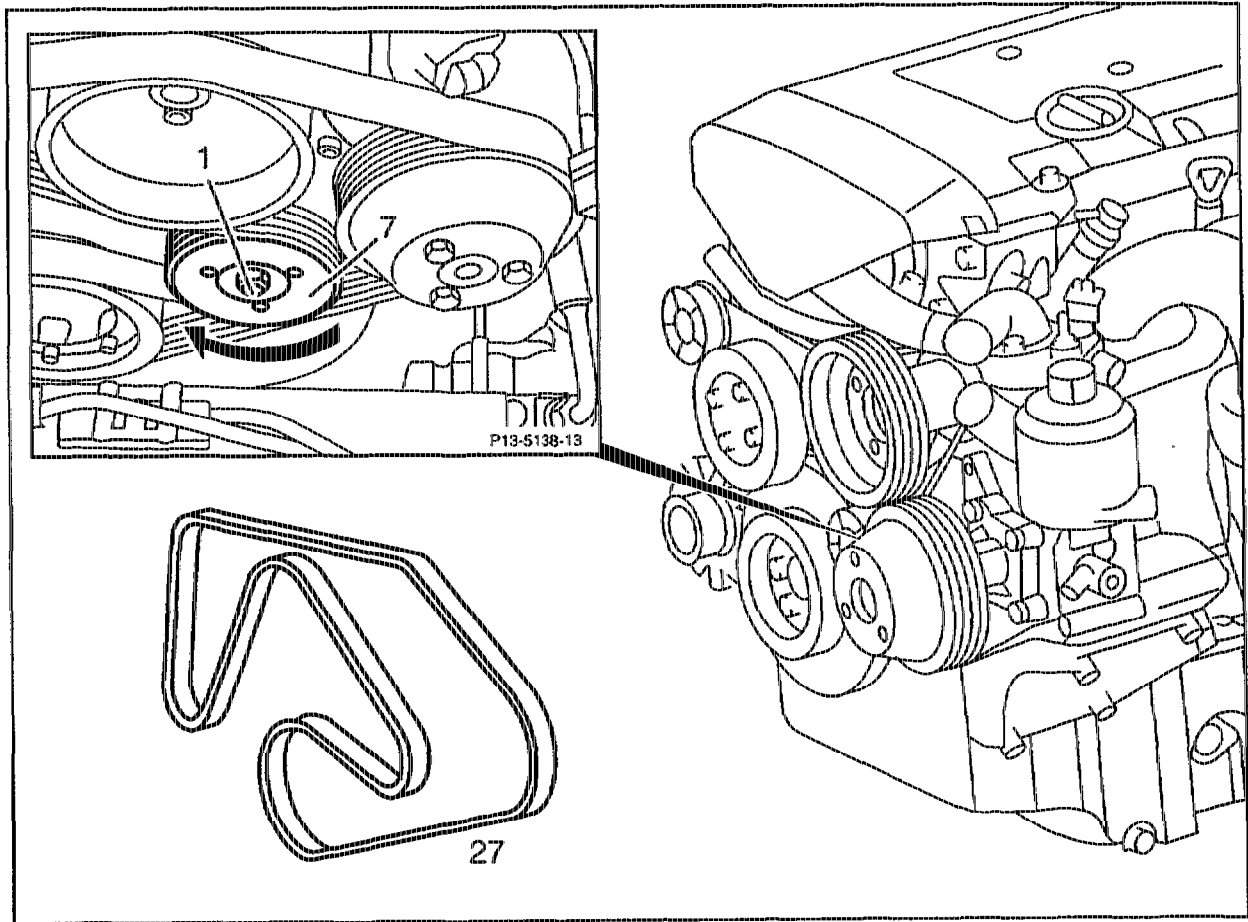
**Special tool**



Preceding work:  
 Fan shroud removed (20-3400)  
 Viscous fan clutch removed (20-3120).

Operation no. of operation texts and work units or standard texts  
 and flat rates  
 13-1202 - 13-4001

**2nd version with internal damper as of September 1994**



P13.20-0206-57

- |                               |  |
|-------------------------------|--|
| Tensioning pulley (7) .....   | swivel clockwise at nut (1) waf 15.  |
| Poly V-belt (27) .....        | take off.  |
| Profiles of belt pulley ..... | examine for signs of damage and dirt; replace if<br>necessary (e.g. worn bearing points of<br>tensioning device, damage to belt pulleys etc. |

Poly V-belt (27) .....

fit on beginning at tensioning pulley (7); swivel tensioning pulley (7) clockwise at nut (1) for this step (for running diagram see 13-1240).



Do not use belt wax or similar products.

**Note**

The different versions of the tensioning pulley (7) with  $\varnothing$  92 or  $\varnothing$  80 mm require different lengths of poly V-belts (13-1240).

If a 20 mm shorter poly V-belt is installed together with a smaller tensioning pulley (7) ( $\varnothing$  80 mm) when performing repairs, the belt length should be entered on the last page of the Maintenance Booklet and the Owner's Manual revised accordingly.

**Wartungsheft**

**Achtung !  
Keilrippen-Riemenlänge  
geändert auf 2 . . . mm.**

**Nächster  
Service  
10 000-  
12 500km  
oder**

Monat/Jahr

**Personenwagen**

P00.00-0485-33

Use of tensioning device with internal damper

(2nd version)

as of engine number

104.941 10 004 059

104.941 12 034 967

104.942 10 005 790

104.942 12 048 697

104.943 10 000 901

104.943 12 003 621

104.944 10 000 740

104.944 12 007 448

104.945 10 000 001

104.945 12 000 001

104.991 12 009 986

104.992 10 004 357

104.992 12 072 237

104.994 12 031 210

104.995 12 000 001

104.996 10 000 001

104.996 12 000 001

