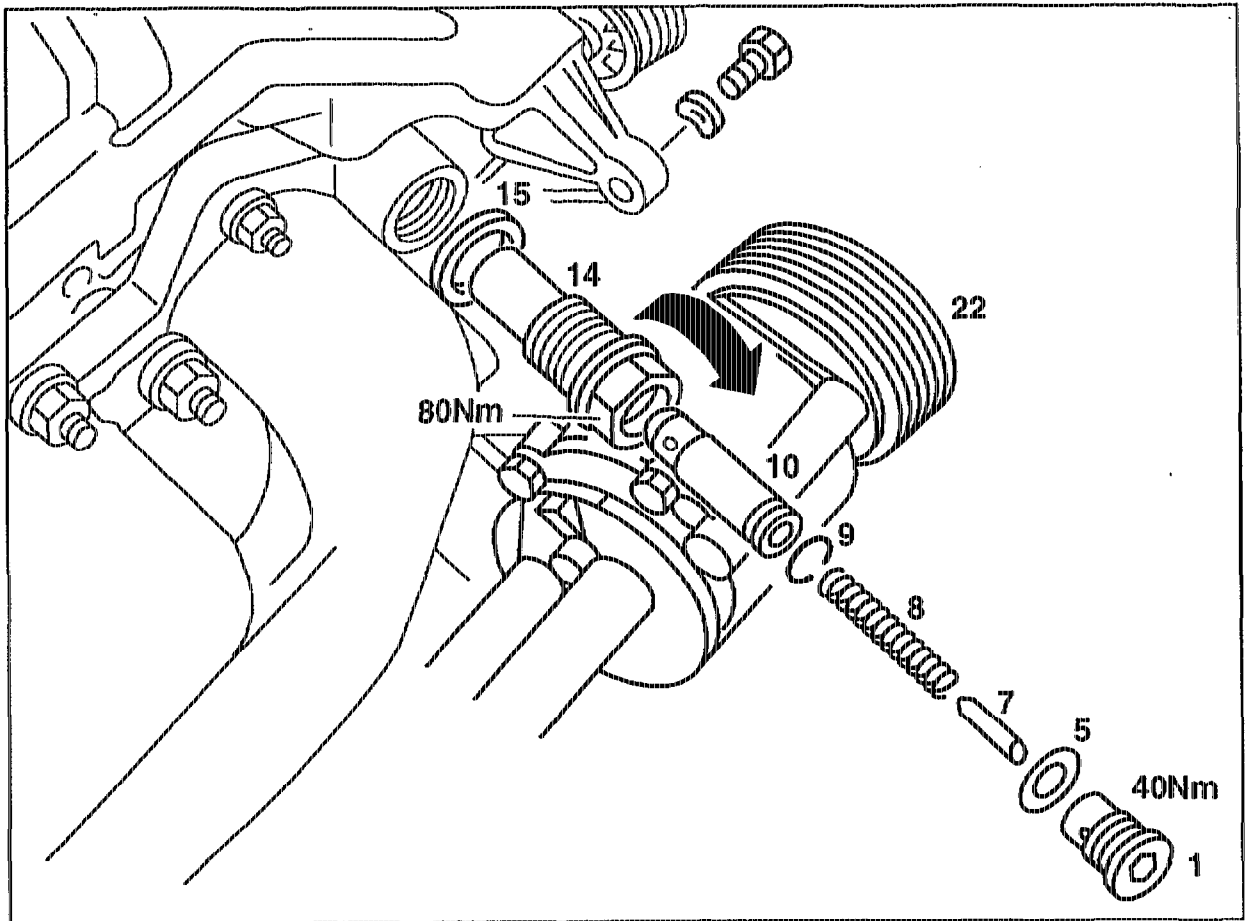


05-3100 Removing and installing chain tensioner

Preceding work:
Viscous fan clutch removed (20-3120).
Poly V-belt removed (13-3200).

Operation no. of operation texts and work units or standard texts
and flat rates:
05-7800, 7801



P05-5404-57

Removing, models 124, 129, 202

Models 124, 129, 140:	unbolt air pump (22), swivel to the side with lines/wiring connected, bolt on (14-7251).
Models 124, 129, 140:	cover over generator with cleaning cloth.
Model 202:	disconnect ground cable at battery, connect.
Model 202:	remove air cleaner top part, install (09-1051).
Model 202:	unbolt generator, place to side with wiring connected, bolt on (15-5032).
Screw plug (1)	slacken approx. one turn.

Chain tensioner complete unbolt.

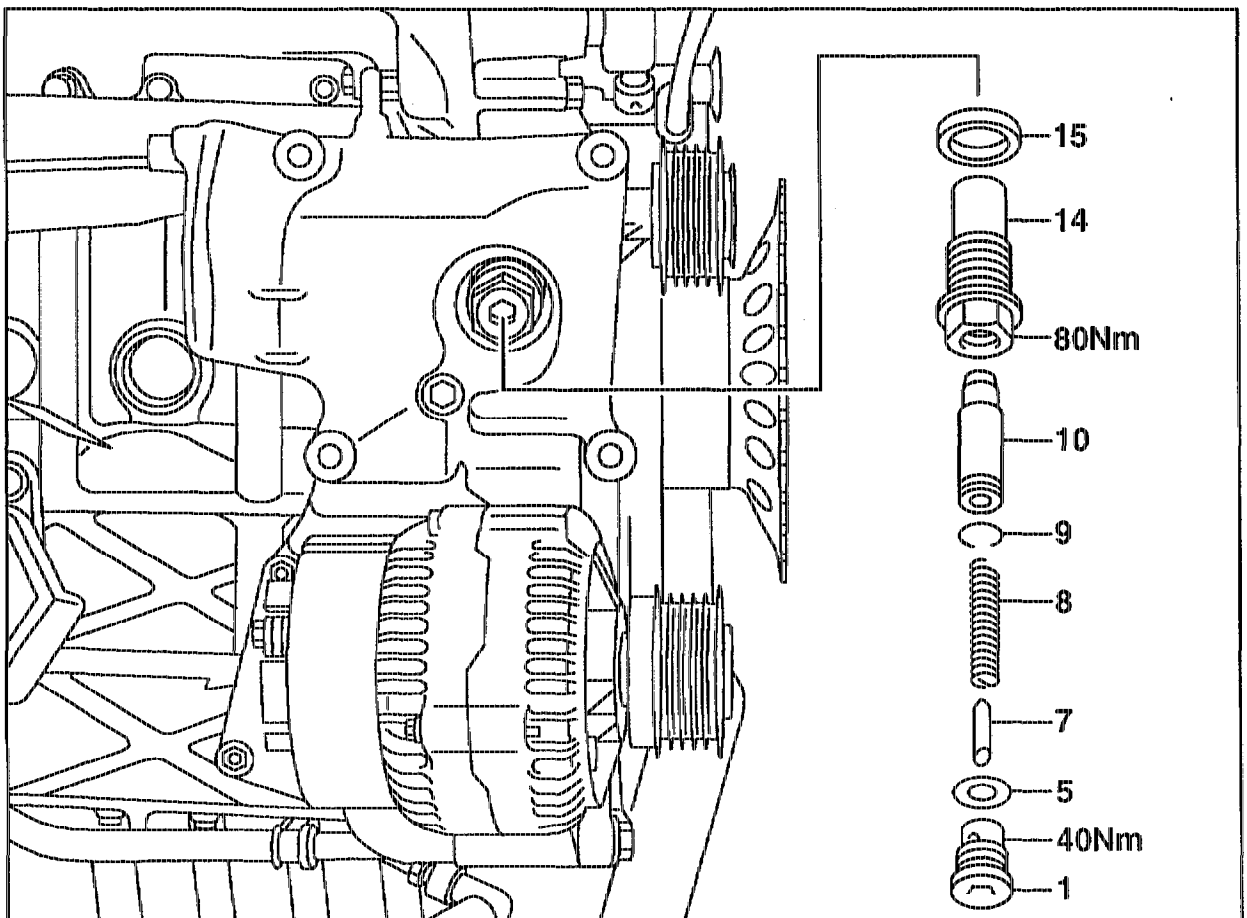


If the chain tensioner housing (14) has been slackened, it must be taken off as the thrust pin (10) is locked with the detent spring (9) in the pressure direction.

Screw plug (1) with seal (5) unscrew.

Filler pin (7) and compression spring (8) remove.

Thrust pin (10) with detent spring (9) in chain tensioner housing (14) press out in pressure direction.



P05-5533-57

Removing, model 210

Air cleaner remove, install.

Generator unscrew top bolt, screw on, slacken bottom bolt, swivel generator down.

Screw plug (1) slacken about one turn.

Chain tensioner complete unscrew.

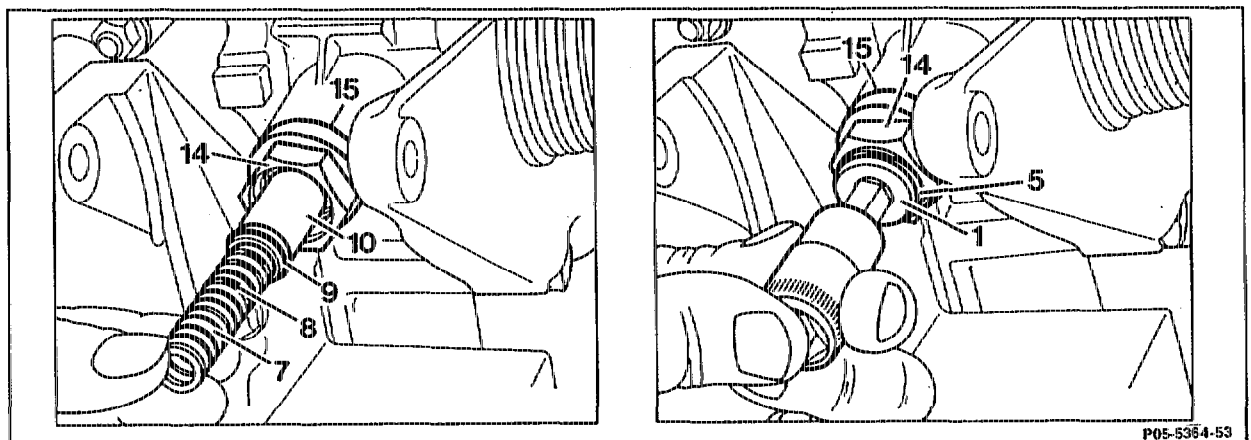


If the chain tensioner housing (14) was slackened, it must be removed as the thrust pin (10) is locked in the pressure direction by the detent spring (9).

Screw plug (1) with seal (5) remove.

Filler pin (7) and compression spring (8) remove.

Thrust pin (10) with detent spring (9) press out of chain tensioner housing (14) in pressure direction.



Installing

Chain tensioner housing (14) with seal (15) install, tighten (80 Nm).

Thrust pin (10) with detent spring (9),
compression spring (8) and filler pin (7) insert.

Screwplug (1) with new seal (5) screw in, tighten (40 Nm).

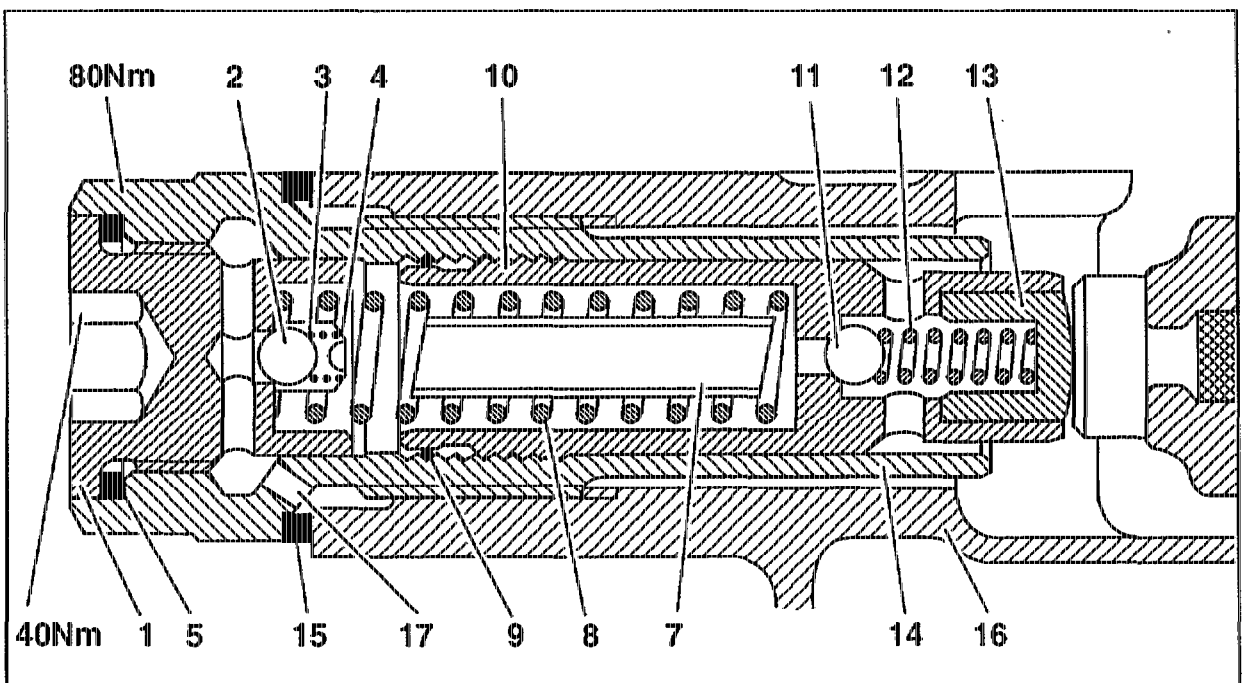
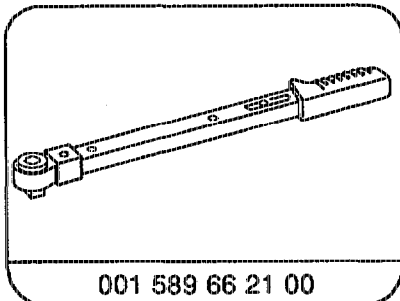
Note

Stick seal (5) onto screwplug (1) with grease.
run, check for leaks.

Tightening torques in Nm

Screw plug of chain tensioner	40
Chain tensioner housing in timing case cover	80

Special tool



P05-5405-55

1	Screw plug	10	Thrust pin
2	Ball (return flow shutoff valve)	11	Ball
3	Compression spring	12	Compression spring
4	Ball guide	13	Thrust piece (press-fitted)
5	Aluminium seal	14	Chain tensioner housing
7	Filler pin	15	Aluminium seal
8	Compression spring	16	Timing case cover
9	Detent spring		