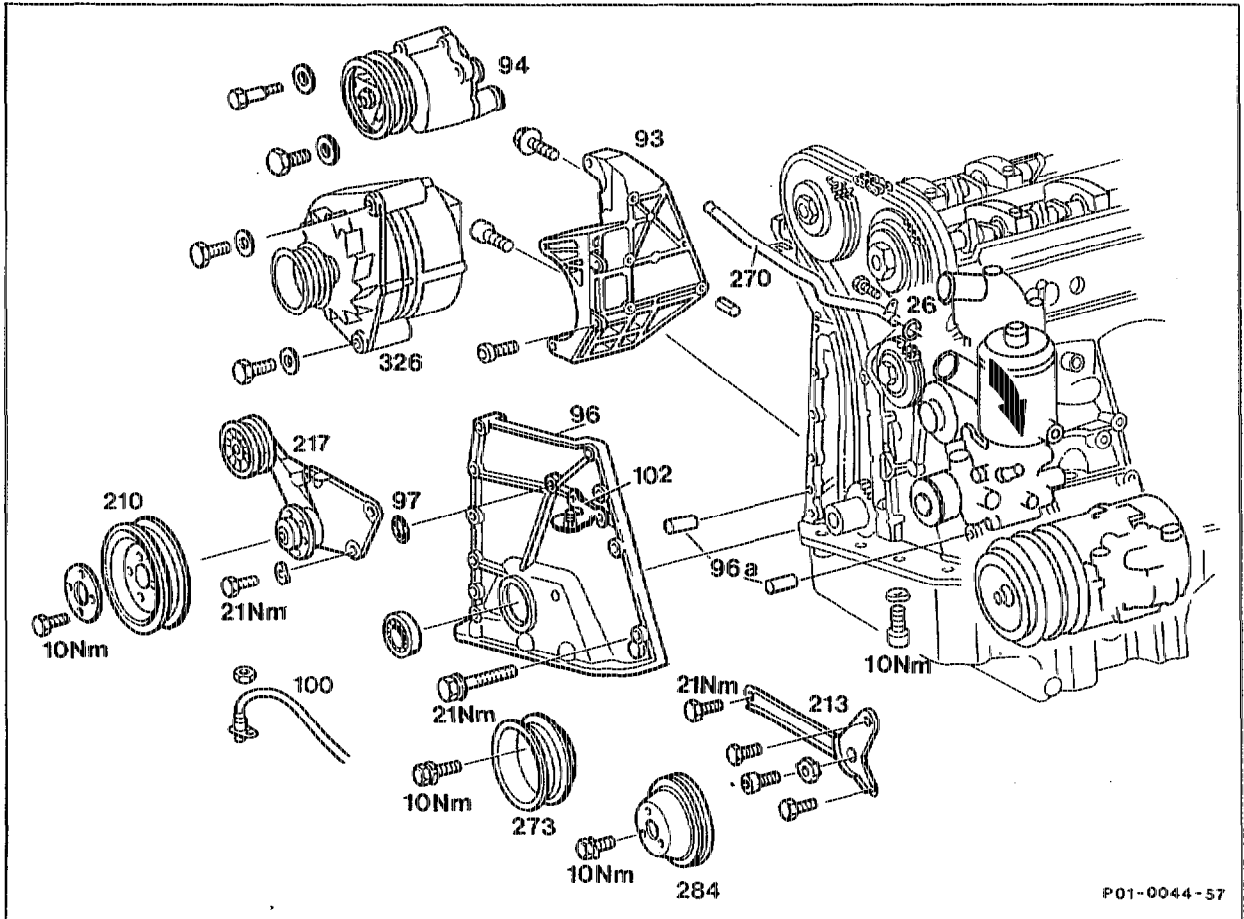


# 01-2100 Removing and installing timing case cover

Preceding work:  
Warning instructions when hood open (01-0085)

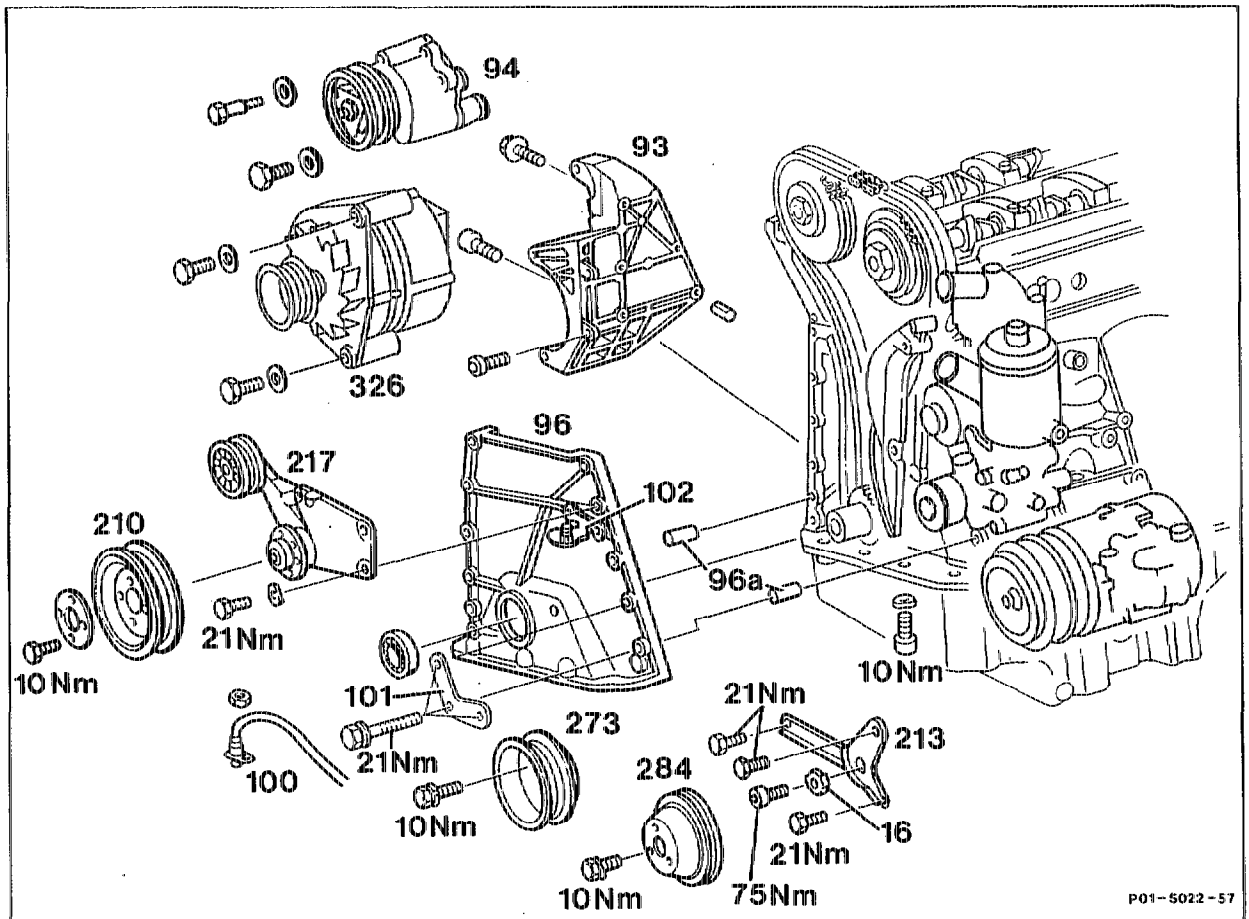
Operation no. of operation texts and work units or standard texts  
and flat rates  
01-8000-8009

## A. Models 124, 129 with engines 104.98



Engine 104.98

## B. Model 140



Engine 104.99

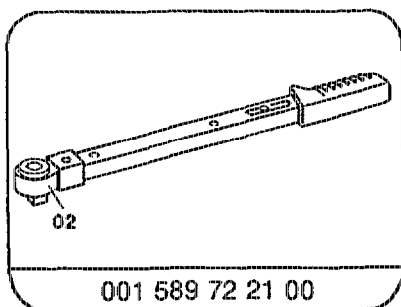
Ground cable at battery .....	disconnect, connect, encode radio, model 140 normalize power windows.
Air cleaner and intake air scoop .....	remove, install (AR09.10-1050D).
Bottom engine compartment panel .....	remove, install.
Viscous fan clutch .....	remove, install (20-3120).
Securing bolts of belt pulleys:	
fan clutch (210), coolant pump (273), power steering pump (284) .....	slacken, tighten (step 6).
Poly V-belt .....	remove, install (13-1200).
Belt pulley: fan clutch (210), coolant pump (273), power steering pump (284) .....	take off, fit on (step 8).
Belt pulley, vibration damper .....	remove, install (03-3420).

Cap of cooling system .....	open (release pressure).
Model 124, 129 engine 104.98: .....	remove heating water return pipe (270), install, replace seal (26) (step 11).
Opening of coolant pump .....	seal.
Front cover at top .....	remove, install (01-2120).
Timing chain with camshaft sprockets .....	mark with coloured markings.
Bracket of tensioning device (213) .....	slacken, swivel, seal and attach (step 14).
Model 140 engine 104.99: .....	unbolt bracket at timing case cover, bolt on.
Model 124, 129 engine 104.98: .....	unbolt power steering pump, swivel, bolt on (step 15).
Air pump (94) .....	detach, attach (remains in vehicle with lines/wiring connected).
Fan bearing bracket (217) .....	remove, engine 104.98 replace seal (97), install 21 Nm (step 17).
TDC sensor (100) .....	remove, install (step 17).
Generator (326) with support (93) .....	remove, install (steps 18, 19).
	<b>Note</b>
	Insert bolts for support (93) until they make contact, tighten front bolt first of all.
Timing case cover (96) at front and bottom ...	unbolt, bolt on; M6: 10 Nm, M8: 21 Nm (step 20).
Timing case cover (96) with TDC sensor bracket (102) .....	take off, seal and fit on (pay attention to dowel pins 96a), (steps 21 to 23).
Engine .....	run, check for leaks.

#### Tightening torques in Nm

Securing bolts of oil sump	M6	10
Timing case cover to crankcase	M6	9
	M8	21
Securing bolts of belt pulley	M6	10
Securing bolts of tensioning device		75

## Special tool



## Removing, installing

- 1 Disconnect ground cable at battery.

### Installation note

Encode radio, model 140 normalize power windows.

- 2 Pull air scoop off the air filter and remove.
- 3 Remove air cleaner, install (AR09.10-1050D).
- 4 Unscrew bottom engine compartment panel.
- 5 Remove viscous fan clutch (20-4200).

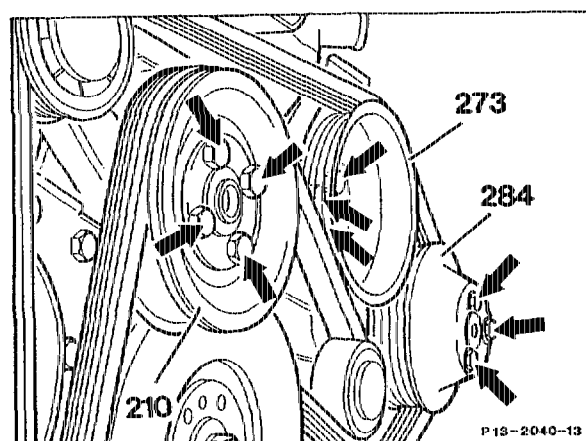
- 6 Slacken bolts (arrows).

- 7 Remove poly V-belt (13-1200).

- 8 Unscrew bolts (arrows), take off belt pulleys of fan clutch (210), coolant pump (273) and power steering pump (284).

- 9 Remove belt pulley, vibration damper and hub (03-3420).

- 10 Open cap of cooling system (release pressure).

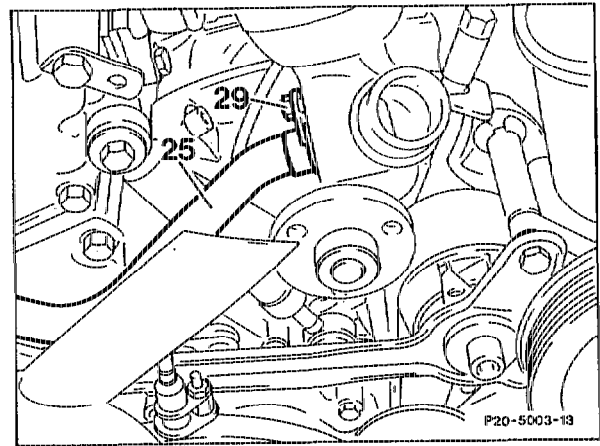


**Models 124, 129**

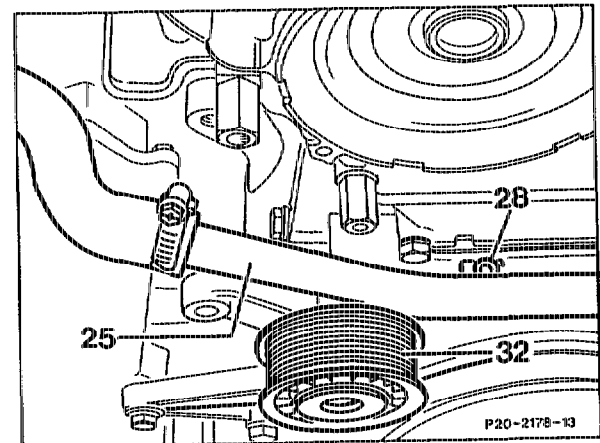
11 Remove heating water return pipe.

**Installation note**

Replace seal between heating water return pipe (25) and coolant pump.



Hose remains connected. Seal opening at the coolant pump.

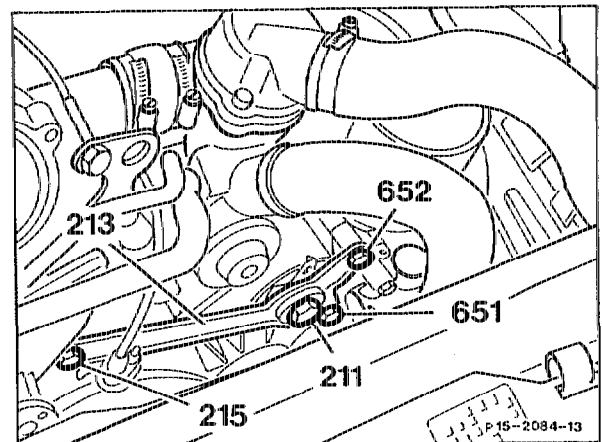


12 Remove front cover at top (01-2120).

13 Mark timing chain with camshaft sprockets with coloured dots.

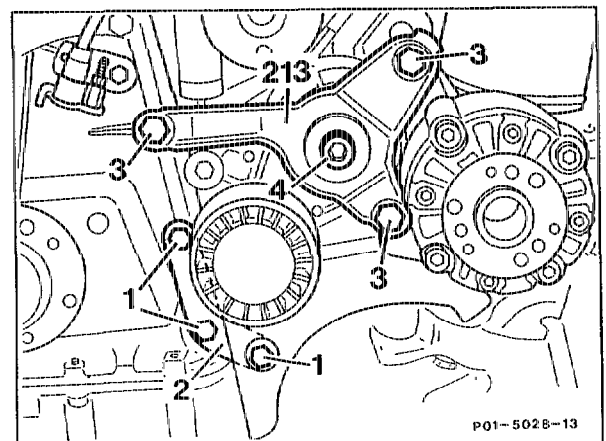
**Models 124, 129**

14 Slacken bolt (211) and unscrew bolts (215, 651, 652) together with spring washers. Swivel bracket (213).



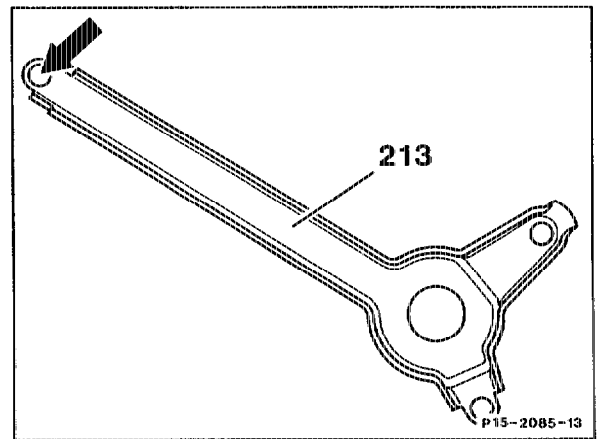
**Model 140**

Slacken bolts (3 and 4) and unscrew. Swivel bracket (213). Unscrew bolts (1) for bracket of combination support (2).



**Installation note models 124, 129**

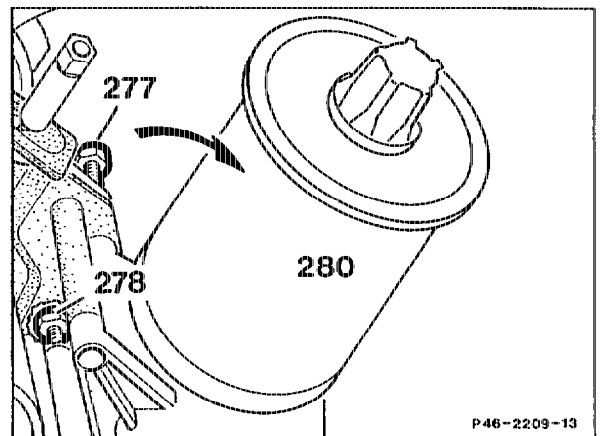
Apply sealant 002 989 45 20 to the front and rear of the mounting hole (arrow) of the bracket (213).



**Models 124, 129**

15 Unscrew bolts (277, 278). Swivel power steering pump (280) in direction of arrow.

16 Unscrew air pump from bracket (remains on vehicle with pipes connected).

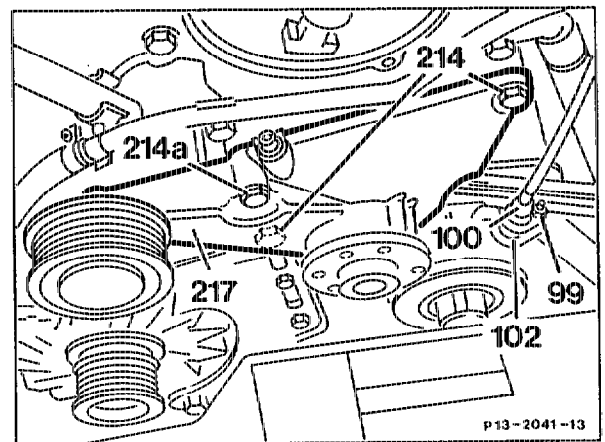


17 Unscrew bolts (214, 214a), tightening torque 21 Nm, and remove fan bearing bracket (217). Unscrew nut (99). Take off TDC sensor (100) together with cable and place to the side.

**Note**

TDC sensor bracket (102) remains on timing case cover.

If timing case cover is replaced, set TDC sensor (03-3450).



18 Unplug cable connector at generator.

19 Unbolt generator together with support, take off.

**Installation note**

Insert side and front bolts for support until they make contact, tighten front bolts first of all so that support is installed free of stress.

20 Unbolt timing case cover from crankcase and oil sump.

21 Detach timing case cover together with bracket of TDC sensor.

**Note**

Do not damage oil sump gasket!  
If necessary, replace oil sump gasket. Examine radial seal; replace, if necessary.

22 Clean sealing surfaces of crankcase and of timing case cover. Apply an even coating of sealant 002 989 47 20 to the sealing surface of the timing case cover.

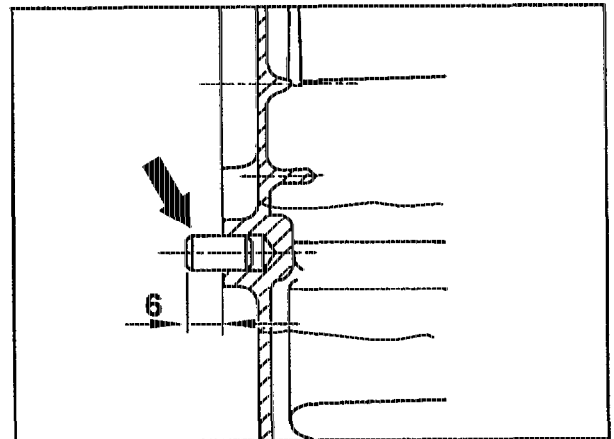
**Note**

The timing case cover is fixed in place by two roll pins on the crankcase.

Pay attention to projection of 6 mm (arrow).  
Do not damage oil sump gasket. First of all, tighten bolts of oil sump, tightening torque 10 Nm. Timing case cover to crankcase:

M6 9 Nm

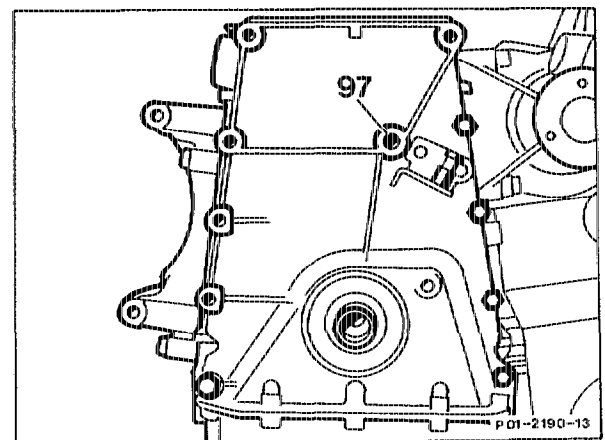
M8 21 Nm



P01.60-0201-13

**Models 124, 129**

23 Replace seal (97).



P 01-2190-13

Version engine 104.98

24 Install in the reverse order.

25 Check oil level in engine and adjust to correct level.

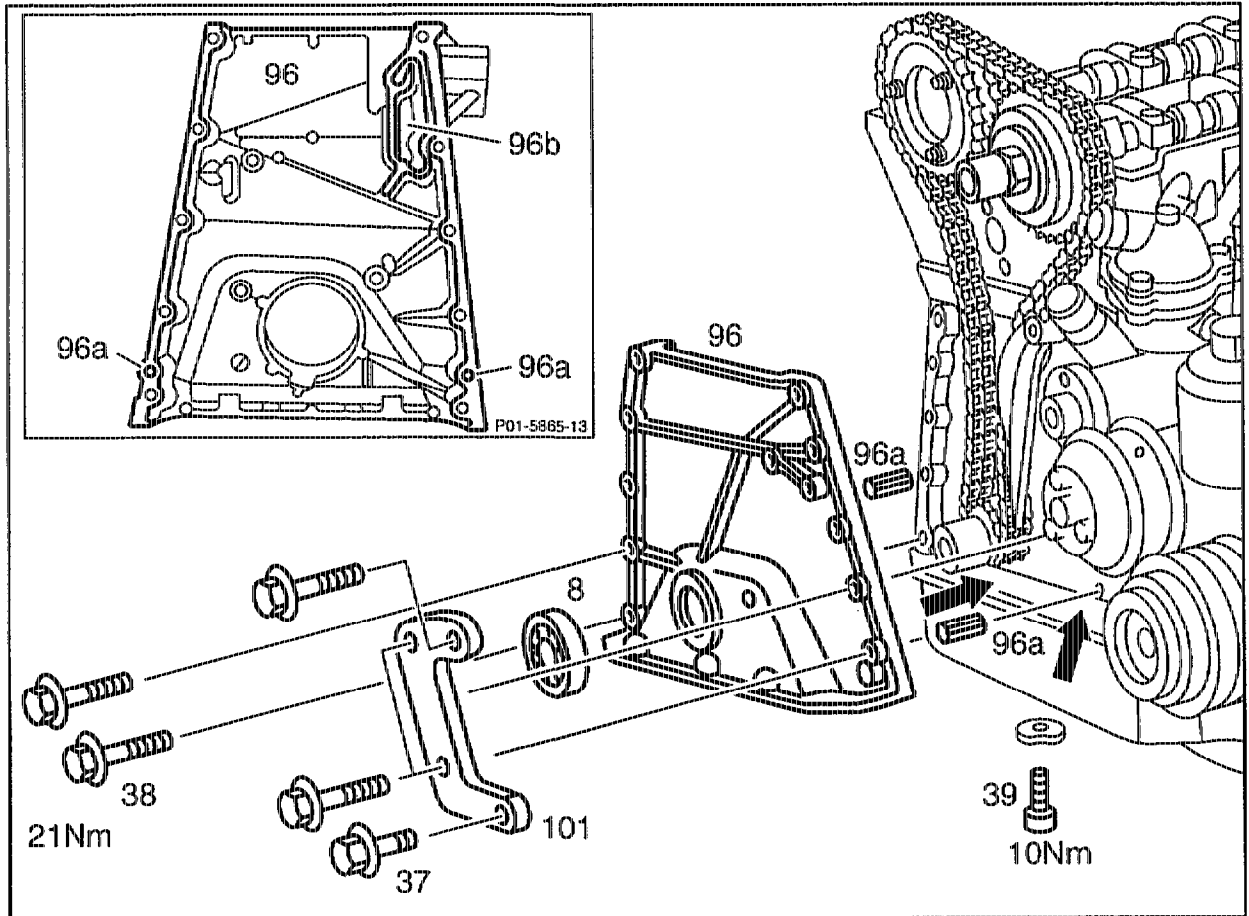
26 Run engine and check for leaks.

## C. Models 202, 210

### Preceding work:

Front cover at top removed (01-2120).  
 Support of air pump/generator removed (01-2110).  
 Model 202 with tensioning device 1st version: tensioning device removed (13-3200).  
 Viscous fan clutch bearing bracket removed (20-3140).  
 Belt pulley/vibration damper removed (03-3420).

Operation no. of operation texts and work units or standard texts and flat rates:  
 01-8000-8009



37 M8 x 40 bolt + washer  
 38 M8 x 60 bolt + washer

39 M6 x 22 hexagon socket bolt + washer  
 96a Roll pin

Timing chain to camshaft sprockets with	mark with coloured marking (arrows).
Bracket (101)	unbolt, bolt on (21 Nm).
Timing case cover (96) at front and bottom	unbolt, bolt on (M6 10 Nm; M8 21 Nm).
Timing case cover (96)	remove, install.
Roll pins (96a)	do not lose, see note.
Sealing surfaces	clean.



Do not damage oil sump gasket (arrows).



Sealing surfaces ..... coat with sealant 002 989 47 20.



Ensure that no sealant gets into the oil chamber (96b) of the chain tensioner.

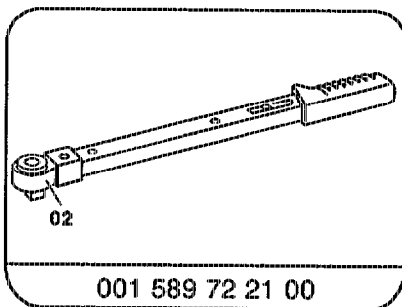
Radial shaft seal (8) ..... examine, replace if necessary (03-3240).

Engine ..... run and check for leaks.

### Tightening torque in Nm

M8 bolts of timing case cover to crankcase	21
M6 bolts of oil sump to timing case cover	10

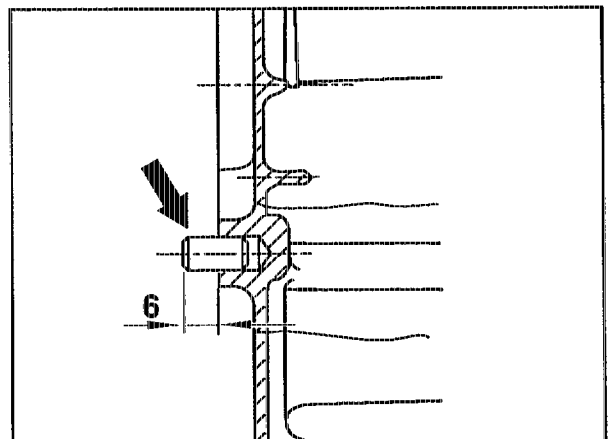
### Special tool



### Note

The timing case cover is fixed in position by two roll pins at the crankcase.

Pay attention to projection of 6 mm (arrow).



P01.60-0201-13