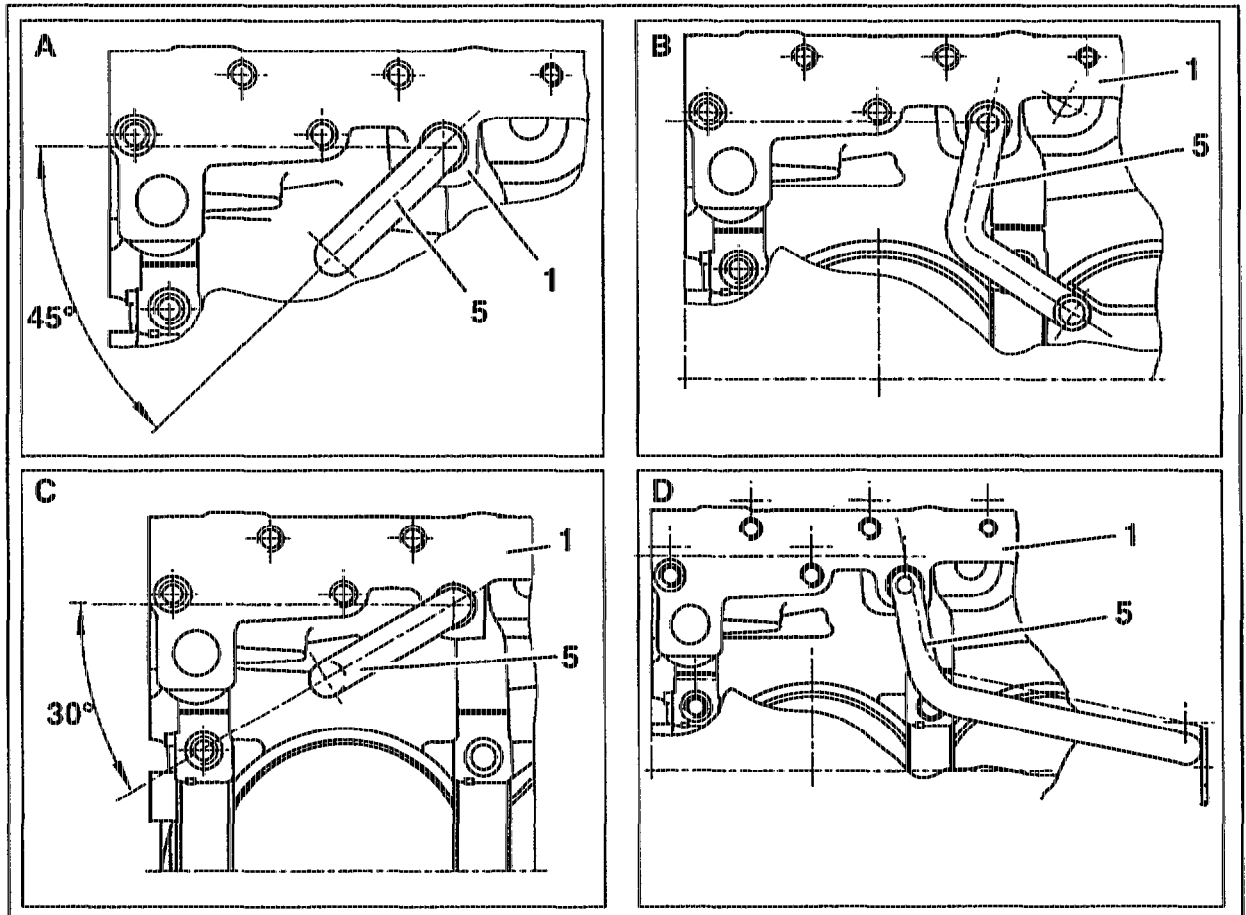


01-0430 Oil drain pipe in bottom of crankcase, arrangement

Operation no. of operation texts and work units or standard texts and flat rates:



P01.40-0234-57

- A Engine 104.941/942/943/945/991/992/995/996
as of February 1995 angle 52° instead of 45°
- B Engine 104.944/994

- C Engine 104.980
- D Engine 104.990

Oil drain pipe (5) install in position illustrated.

Note

The oil drain pipe (5) is designed as a syphon. This prevents engine oil being drawn in together with the blowby gases if the opening of the oil drain pipe (5) is positioned below the oil level. The oil drain pipe (5) is knocked into the oil drain hole in the crankcase (1) in a particular position.