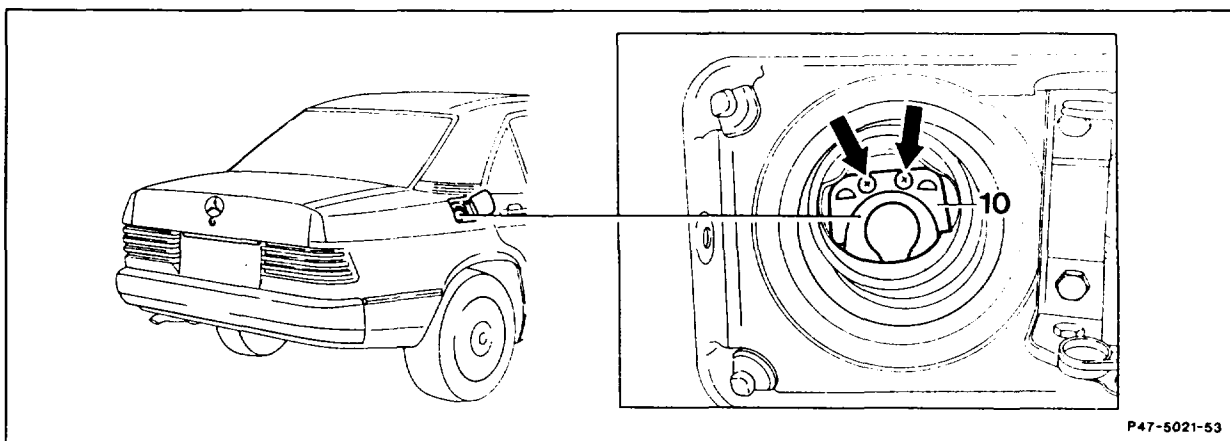


47-4100 Removing and installing fuel tank

Operation no. of operation texts and work units or standard texts
and flat rates:
47-4100.

A. Removing and installing guide funnel (on all models with catalytic emissions control system)



Guide funnel (10) remove, install.

To do this, pull out the two rivets (arrows) with special tool 123 589 05 33 00, insert with drift.

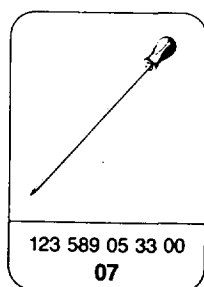


Do not permit rivets to drop into fuel tank. They cancel the function of the splash bowl (fuel reserve quantity cannot be used).

Note

A guide funnel (10) is installed because of the smaller fuel dispensing nozzle for unleaded fuel. When replacing the fuel tank, a guide funnel must be installed.

Special tool

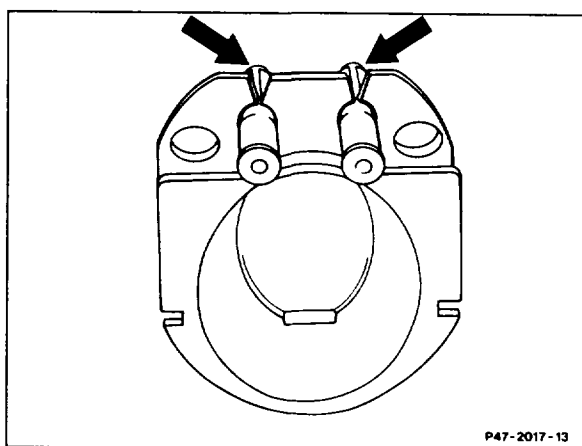


Note

Models 107, 124, 126, 201

National version (USA)

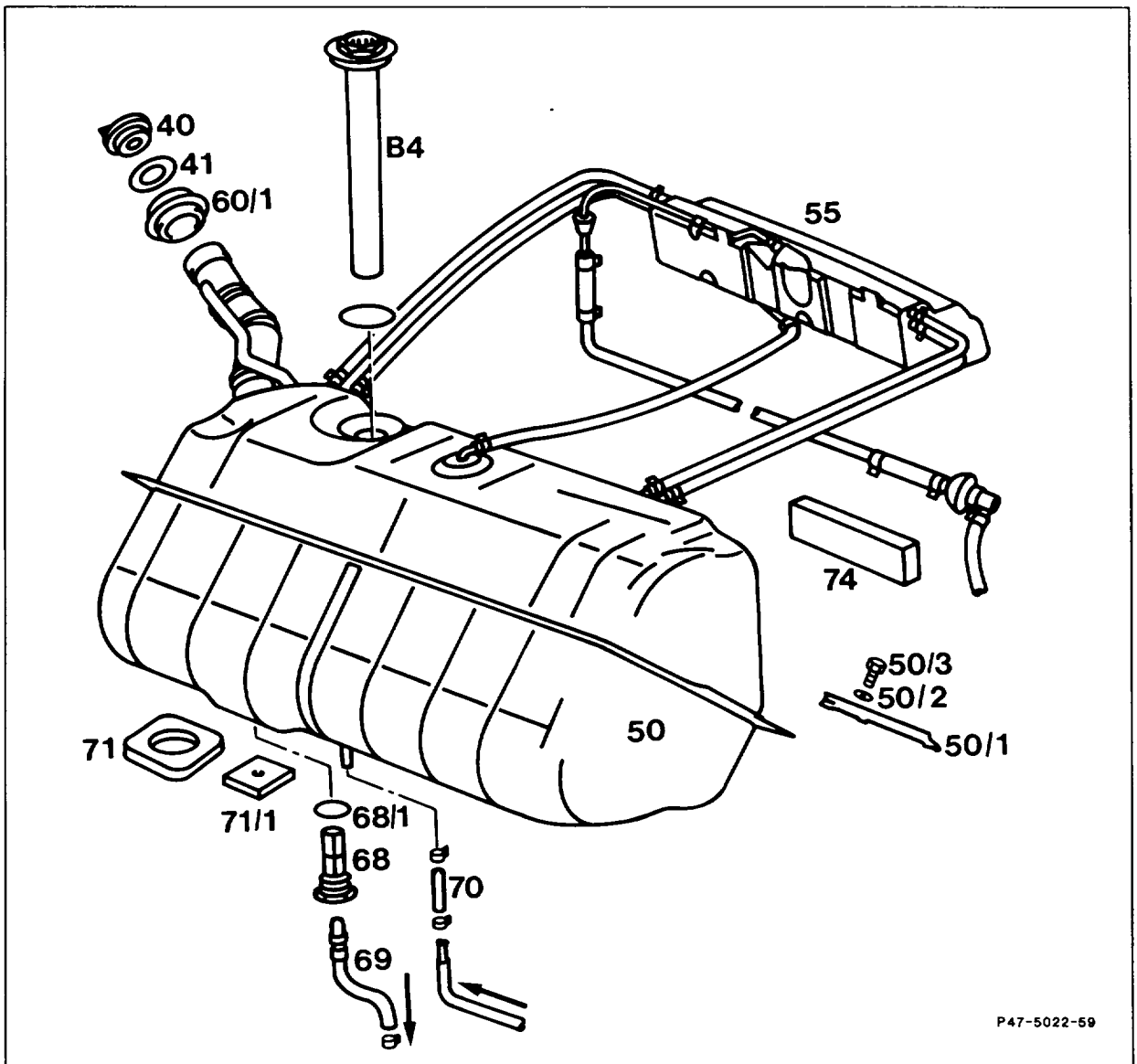
The guide funnel is provided with additional notches (arrows) to facilitate installation.



Production breakpoint: June 1989

Model	Vehicle ident end no. A/B	Vehicle ident end no. F
107	102856	-
124 Sedan	020969	-
124 Coupé	021039	-
124 Station Wagon	-	114201
126	484390	-
201	-	637121

B. Model 107



P47-5022-59



Pay attention to safety precautions. Risk of accident!

Ground cable	disconnect at battery, connect.
Pressure in fuel tank	release by removing cap (40), fitting on.
Seal (41)	check, replace if necessary.
Fuel gauge sender (B4)	remove, install (47-7000). Only when exchanging fuel tank.

Fuel expansion tank (55)	remove, install (47–8021).
Fuel tank (50)	drain. Carefully pump out fuel so that no fuel remains in the tank. Capacity approx. 85 liters.
Cup seal (60/1)	remove, insert.
Fuel feed line (69) and fuel return line (70)	take off, attach.

Note

Collect remaining fuel.
Seal connections.
Check suitability for reuse.
Tightening torque 28 Nm (reference value).

Bolts (50/3, 4 ea.)	unscrew, screw in.
---------------------------	--------------------

Installation note

Use washers (50/2).
Tightening torque 20 Nm (reference value).

Fuel tank (50)	remove, insert.
----------------------	-----------------

Installation note

Stick sealing pads (71, 71/1) and soundproofing strips (74) with MB universal adhesive 000 989 92 71 if necessary. Install reinforcing plates (50/1) with reinforced side between bracket and fuel tank.

Fuel strainer (68)	remove, install. Clean and check suitability for reuse. Tightening torque 40 Nm.
--------------------------	-------------------------------------------------------------------------------------

Note

Remove fuel strainer with fuel tank in place.
Screw M18 × 1.5 bolt with locking nut into fuel filter in place of the feed line, tighten locking nut and unscrew fuel strainer.

Seal (68/1)	replace.
-------------------	----------

Engine	run briefly. Check connections for leaks.
--------------	----------------------------------------------

Fuel tank (50)	drain. Carefully pump out fuel so that no further fuel remains in the tank. Capacity approx. 70 liters.
Cup seal (60/1)	remove, insert.
Fuel tank trim and also left and right trunk side trim	remove, install.
Fuel feed line (69), fuel return line (70), vent line (64/1), vent valve (51)	take off, fit on.

Note

Collect remaining fuel.
 Seal connections.
 Check suitability for reuse.
 Ensure cup seals (80, 81) are correctly seated.
 Tightening torque 28 Nm (reference value).

Nuts (50/4, 4 ea.)	screw down, screw up.
------------------------------	-----------------------

Installation note

Use washers (50/2).
 Tightening torque 20 Nm (reference value).

Fuel tank (50)	take out, insert.
--------------------------	-------------------

Installation note

Stick sound proving strips with MB universal adhesive 000 989 92 71 if necessary.

Fuel strainer (68)	remove, install. Clean and check suitability for reuse. Tightening torque 40 Nm.
Seal (68/1)	replace.
Engine	run briefly, check connections for leaks.

Notes**Model 124**

(except national version (ALS) (J) (USA))

Vent line (aluminium version) plastic-coated.

Production breakpoint

Model	Month/Year	Vehicle ident end no.
124.026/030	3-7/89	A 964095-B 045298

Model 124

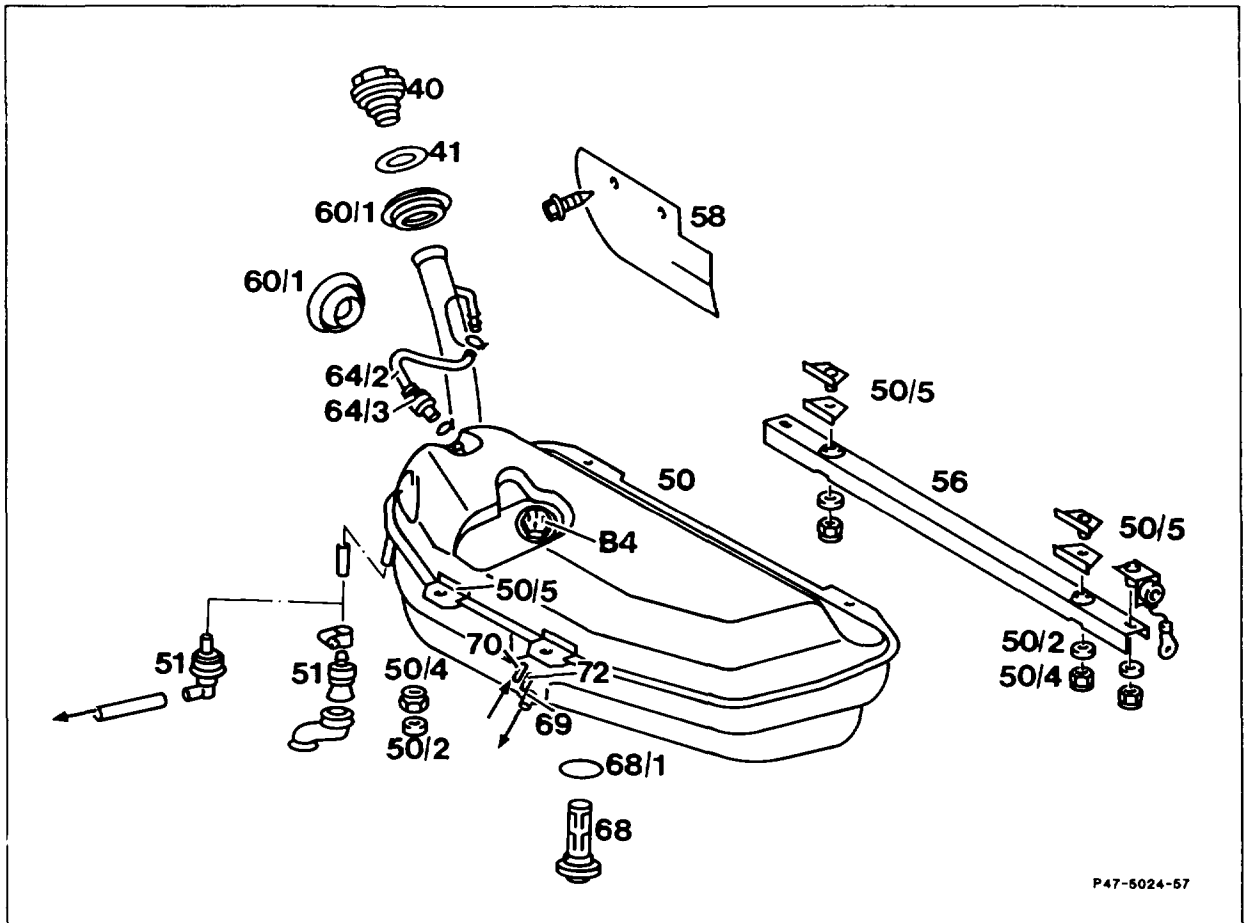
Improved sealing of splash ball in fuel tank by means of O-ring. This avoids misfiring (in long right-hand curves and fuel tank less than "1/4 full").

Identification: green colored dot on bottom of filler neck.

Production breakpoint: February/March 1987

Model	Vehicle ident end no.
124	A 444663-A 448803

D. Model 124 Station Wagon



P47-5024-57



Pay attention to safety precautions. Risk of accident!

Ground cable	disconnect at battery, connect.
Pressure in fuel tank	release by removing cap (40), fitting on.
Seal (41)	check, replace if necessary.
Fuel gauge sender (B4)	remove, install (47-7000). Only if exchanging fuel tank.
Fuel tank (50)	drain. Carefully pump out fuel so that no fuel remains in the tank. Capacity approx. 72 liters.
Cup seals (60/1)	remove, insert.

Vent line (64/2) remove, install.

Installation note

Pre-install vent line at fuel tank. Lay line with slight rise and free of kinks. Check that cup seal (64/3) is correctly seated.

Fuel feed line (69), fuel return line (70),
leak line (72) detach, fit on.

Note

Collect remaining fuel.
Seal connections.
Check suitability for reuse.

Vent valve (51) detach, fit on.

Exhaust system detach at rear suspension point, attach.
Detach with V-belt.

Splach guard (58) filler neck remove, fit on.

Level line holder (left side) remove, fit on.

U rail (56), attachment (50/2, 50/4, 50/5) remove, install.

Tightening torque 30 Nm.
Use self-locking nuts (50/4).



Support fuel tank when performing this step.

Fuel tank (50) remove, insert.



When removing fuel tank, ensure that the connection fitting for the vent line (64/2, at the filler neck) does not catch on a line. Push exhaust pipe and level line to the left.

Installation note

Stick sound proving strips between rear floor and fuel tank with MB universal adhesive 000 989 92 71

Fuel strainer (68)	remove, install, clean and check suitability for reuse.
	Tightening torque 40 Nm.
Seal (68/1)	replace.
Engine	run briefly.
	Check connections for leaks.

Note

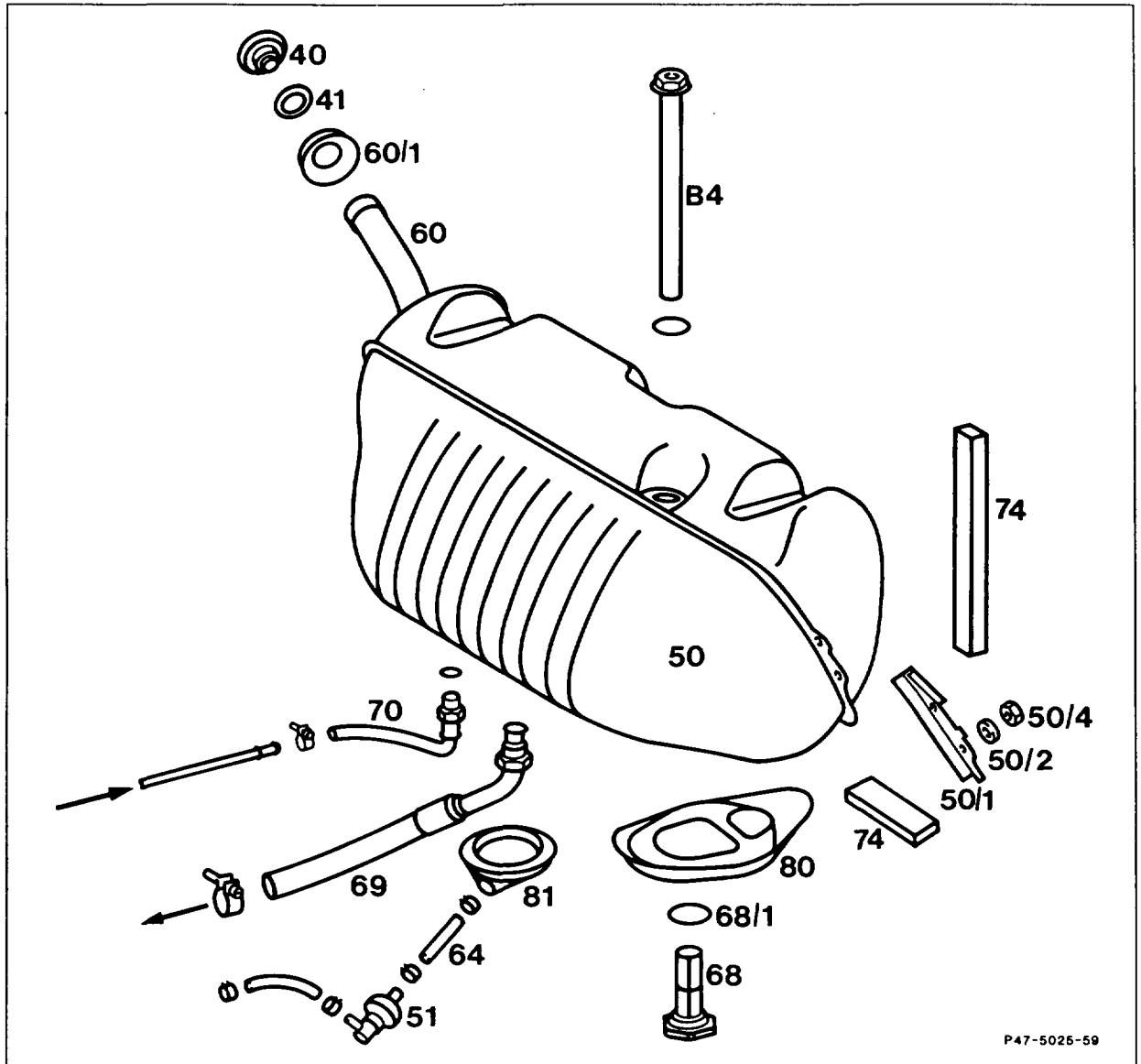
Model 124 Station Wagon

Vent line outlet at fuel tank bottom part
(previously top part).

Production breakpoint: June 1986

Model	Vehicle ident end no.
124 T	F 014890

E. Model 126



P47-5025-59



Pay attention to safety precautions. Risk of accident!

Ground cable	disconnect at battery, connect.
Pressure in fuel tank	release by removing cap (40), fitting on.
Seal (41)	check, replace if necessary.
Fuel gauge sender (B4)	remove, install (47-7000). Only if exchanging fuel tank.

Fuel tank (50)	drain. Carefully pump out fuel so that no fuel remains in the tank. Capacity approx. 90 liters.
Cup seal (60/1)	remove, insert.
Trunk/fuel tank partition	remove, install.
Fuel feed line (69), fuel return line (70), vent valve (51)	remove, fit on.

Note

Use shortened ring wrench (shop-made tool) for fuel return line (70).

Collect remaining fuel.

Seal connections.

Check suitability for reuse.

Check that cup seals (80, 81) are correctly seated.

Tightening torque 28 Nm (reference value).

Nuts (50/4, 4 ea.)	screw down, screw up.
--------------------------	-----------------------

Installation note

Use shims (50/2).

Tightening torque 20 Nm (reference value).

Fuel tank (50)	remove, inset.
----------------------	----------------

Installation note

Stick sound proving strip (74) with MB universal adhesive 000 989 92 71 if necessary.

Install reinforcing plates (50/1) with reinforced side between bracket and fuel tank.

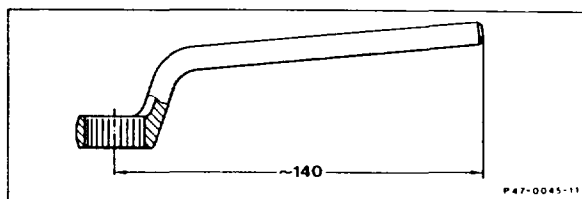
Fuel strainer (68)	remove, install, clean and check suitability for reuse. Tightening torque 40 Nm.
--------------------------	----------------------------------------------------------------------------------

Seal (68/1)	replace.
-------------------	----------

Engine	run briefly. Check connections for leaks.
--------------	----------------------------------------------

Shop-made tool

Commercially available, angled ring wrench, shortened as shown in sketch.

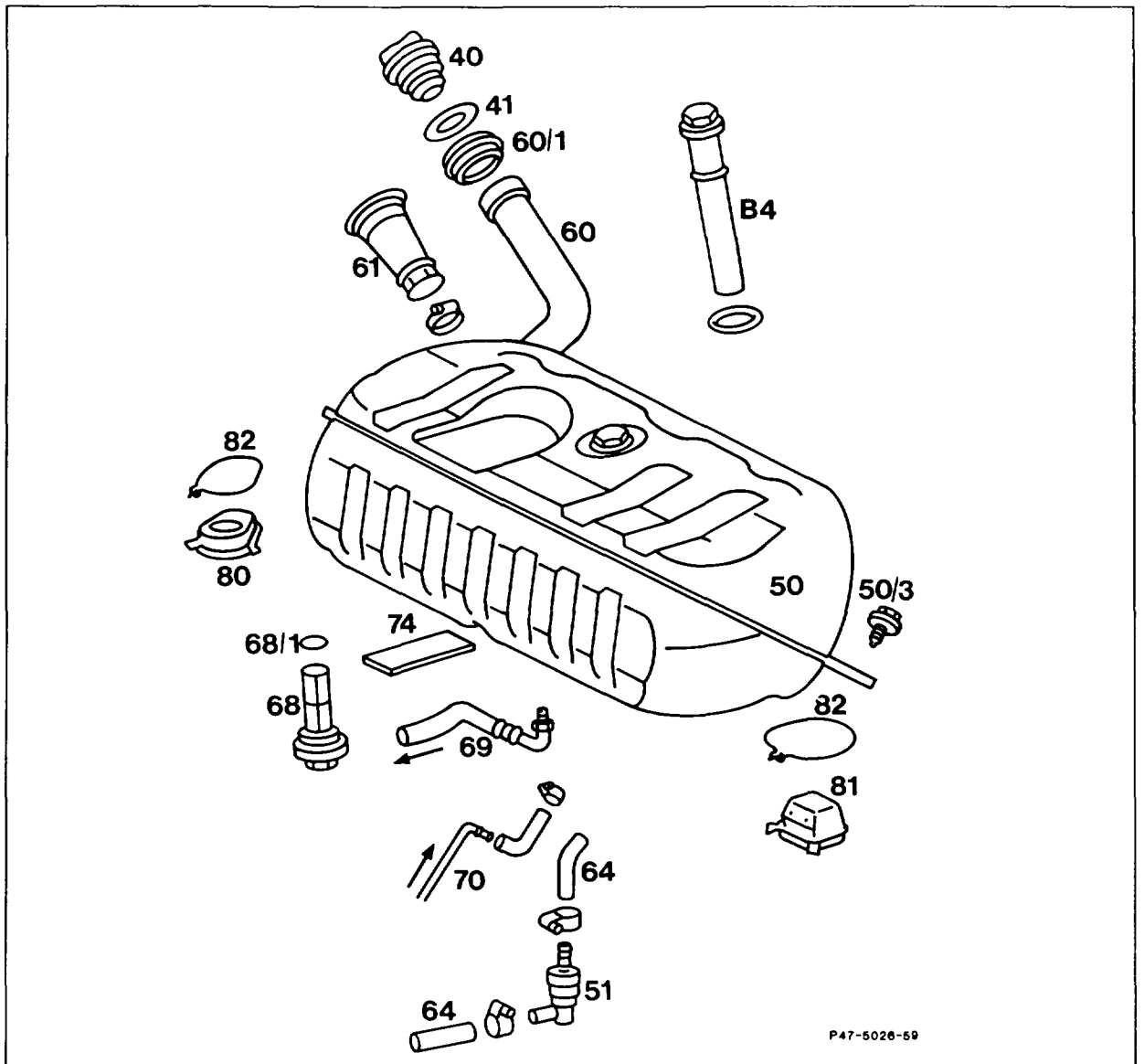
**Note****Model 126, RHD**

Improvement in corrosion protection through use of stainless steel for filler neck, lines and threaded flanges.

Production breakpoint: December 1987 – August 1988

Model	Engine	Vehicle ident end no.
126.020	103.941	A 383962–430586
126.024/025	103.981	A 383962–430586

F. Model 129



P47-5026-59



Pay attention to safety precautions. Risk of accident!

Ground cable	disconnect at battery, connect.
Pressure in fuel tank	release by removing cap (40), fitting on.
Seal (41)	check, replace if necessary.
Fuel gauge sender (B4)	remove, install (47-7000). Only if exchanging fuel tank.

Partition	remove, install.
Clip nuts for top attachment of partition	pull off, fit on.
Cover (61)	slacken, tighten, push back, pull forward.
Infrared remote control unit (N54) (if fitted)	remove, install.
Fuel tank (50)	drain. Carefully pump out fuel so that no fuel remains in the tank. Capacity approx. 80 liters.
Cup seal (60/1)	remove, insert.
Fuel feed line (69)	slacken at pump set inlet, tighten, collect remaining fuel.
Fuel feed line (69)	slacken at fuel strainer (68) with special tool 000 589 71 03 00, check suitability for reuse, tighten. Tightening torque 28 Nm (reference value).
Cup seals (80, 81), springs (82)	remove, insert.
Vent valve (51), return hose (70)	remove, fit on.

Note

To do this, detach exhaust system at the rubber rings, attach (detach with V-belt) and remove left drive shaft at inner connection flange (35–620).

Collect remaining fuel.

Seal connections.

Check suitability for reuse.

Bolts (50/3)	unscrew, screw in.
--------------	--------------------

Installation note

Use washers.

Tightening torque 20 Nm (reference value).

Fuel tank (50) remove, insert.

Note

If necessary, lever fuel tank out of the opening with plastic wedges or similar. Pull fuel tank in vehicle fully to the rear left and take out at the filler neck.

If insufficient space is available, remove fuel strainer in order to install fuel tank and re-install afterwards from below. Stick sound proving strips (74) MB universal adhesive 000 989 92 71 if necessary.

Fuel strainer (68) remove, clean, check for suitability for reuse, install.

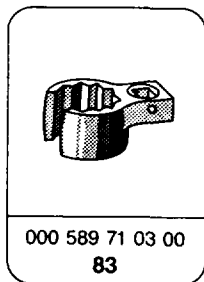
Tightening torque 40 Nm.

Seal (68/1) replace.

Engine run briefly.

Check connections for leaks.

Special tools



Location of components

61 Cover
N54 Infrared remote control
(IFZ) control unit

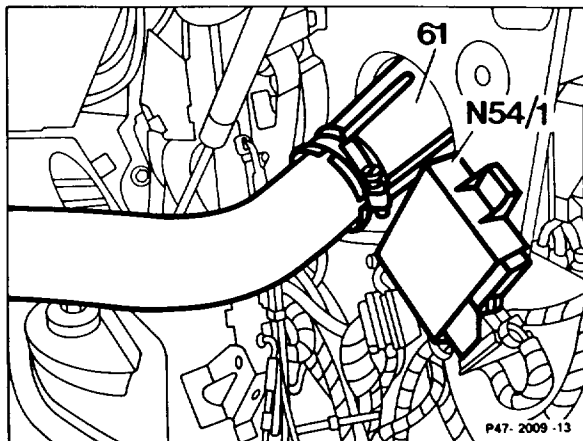
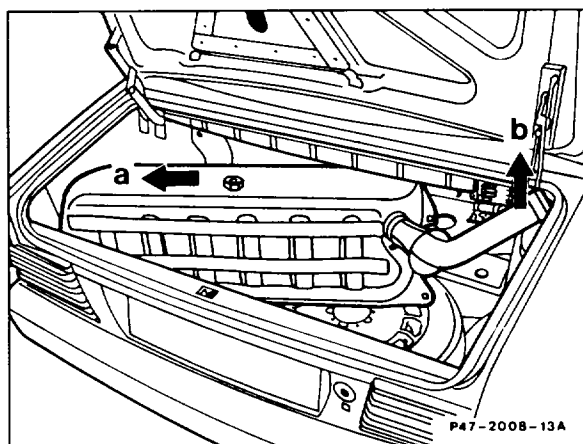
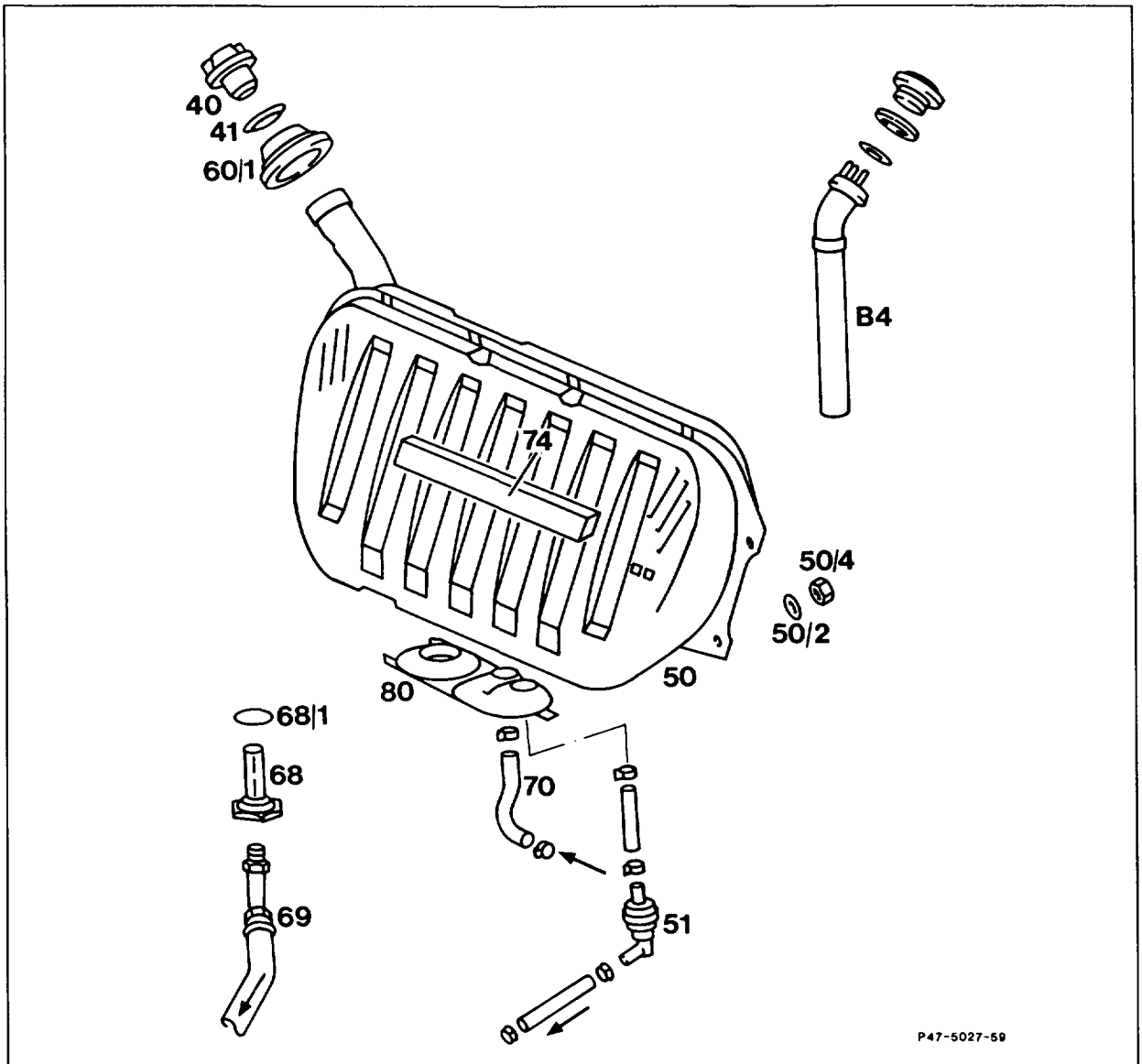


Diagram of fuel tank

- removing (sequence a, b)
- inserting (sequence b, a by analogy)



G. Model 201



Pay attention to safety precautions. Risk of accident!

- | | |
|-----------------------------|-------------------------------------------|
| Ground cable | disconnect at battery, connect. |
| Pressure in fuel tank | release by removing cap (40), fitting on. |
| Seal (41) | check, replace if necessary. |

Fuel tank (50)	drain. Carefully pump out fuel so that no fuel remains in the tank. Capacity approx. 55 or 70 liters, respectively.
Cup seal (60/1)	remove, insert.
Fuel tank trim	remove, install.
Fuel gauge sender (B4)	remove, install (47-7000). Only if exchanging fuel tank.

Note

In the case of plastic fuel tanks only 1 seal between fuel gauge sender (B4) and fuel tank.

Fuel feed line (69), fuel return line (70), vent valve (51)	take off, fit on.
----------------------------------------------------------------------	-------------------

Note

Collect remaining fuel.

Seal connections.

Check suitability for reuse.

Ensure cup seal (80) is correctly seated.

Tightening torque 28 Nm (reference value).

Nuts (50/4, 4 ea.)	turn down, turn up. In the case of plastic fuel tank, unscrew tensioning strap, screw on, see repair note.
--------------------------	------------------------------------------------------------------------------------------------------------

Installation note

Use washers (50/2).

Tightening torque 20 Nm (reference value).

Fuel tank (50)	remove, insert.
----------------------	-----------------

Note

pull out drain hose slightly upward and run behind the edge of the fuel tank. After installing fuel tank, lay drain hose properly again. Stick sound-deadening strips (74) with MB universal adhesive 000 989 92 71 if necessary.

Fuel strainer (68)	remove, clean, check suitability for reuse, install.
Seal (68/1)	Tightening torque 40 Nm. replace.
Engine	run briefly. Check connections for leaks.

Repair notes

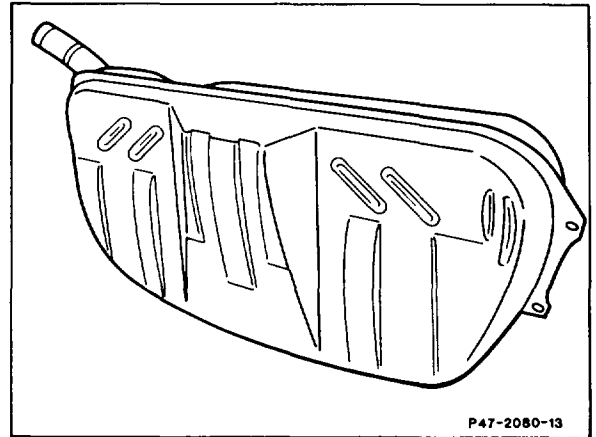
Since 09/1988 the contours of the fuel tanks have been adapted to the modified space conditions.

Capacity approx. 55 and 70 liters, reserve quantity approx. 6.5 and 8 liters, respectively. The 70-liter fuel tank is available in place of the 55-liter fuel tank as optional equipment, with the exception of (AUS) (J) (USA).

The 55-liter fuel tank is made either of sheet steel or plastic. Only the sheet steel fuel tank is supplied to the countries (AUS) (J) (USA).

Fuel tanks as of model care (09/1988) cannot be installed in fuel tanks manufactured prior to this date.

The plastic fuel tanks has other cup seals at the rear floor and filler neck than the sheet steel fuel tank.

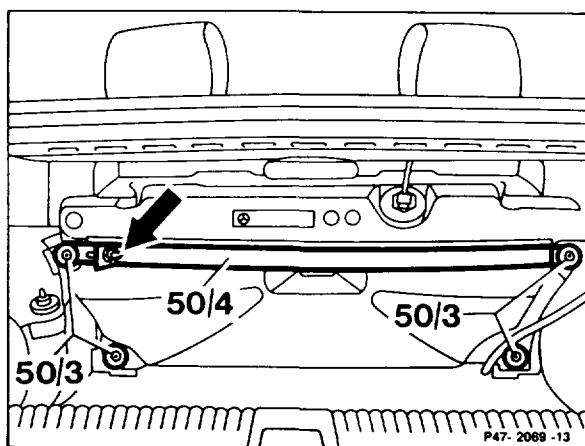


55-liter sheet steel fuel tank

When installing the tensioning strap (50/4), tighten the nuts (50/3) only slightly at first. Then, tighten the tensioning bolt (arrow) to 10 Nm. Following this, tighten the nuts (50/3) to 21 Nm.

Note

For replacements, only the plastic fuel tank with tensioning strap is supplied with the exception of the countries (AUS) (J) (USA).



55-liter plastic fuel tank

Note

Model 201

(except national version (AUS) (J) (USA))

Plastic fuel tank.

Production breakpoint

Model	Engine/Year	Vehicle ident end no.
201.029	3-4/89	A 494377-498372
201.029	6/89	A 506044

Note re model 201.029

Check clearance between fuel hose (intake hose) and inner ring mass of left input shaft (minimum clearance 20 mm). The vehicle must be standing on its wheels ready for the road when performing this check.

If the clearance is insufficient, swivel fuel hose (69) in direction indicated by arrow until the clearance of 20 mm is achieved.

Tighten bolt connection (28 Nm).

